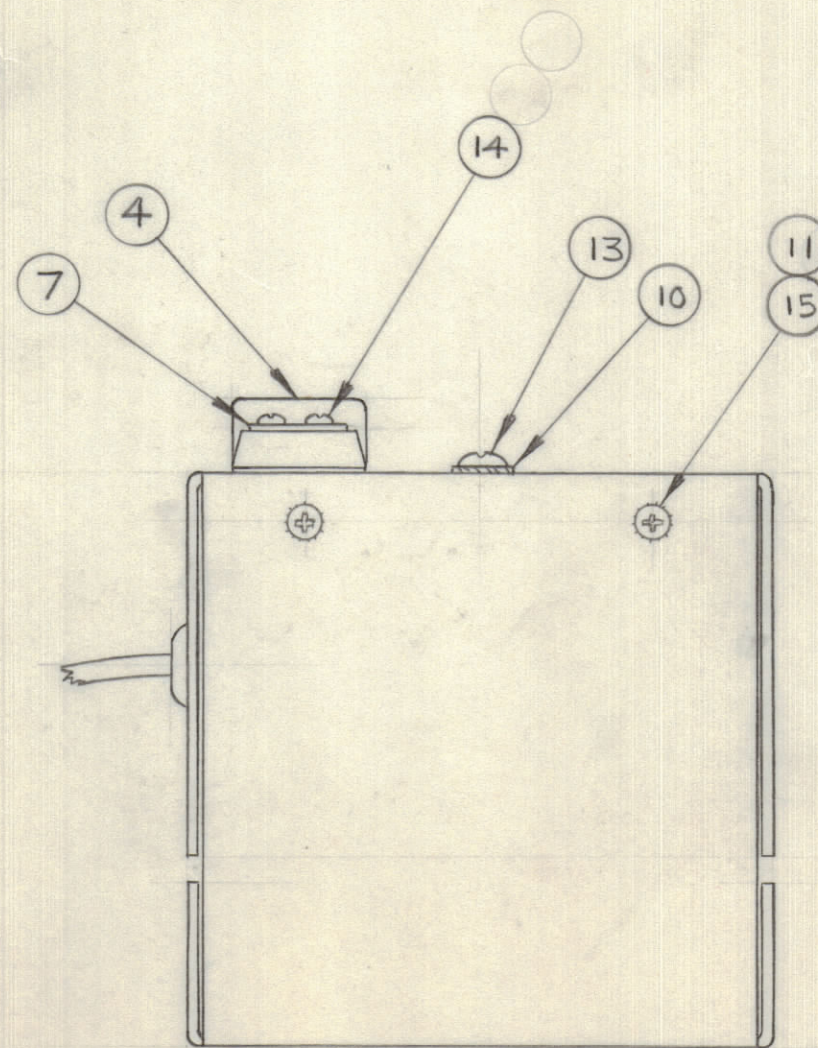
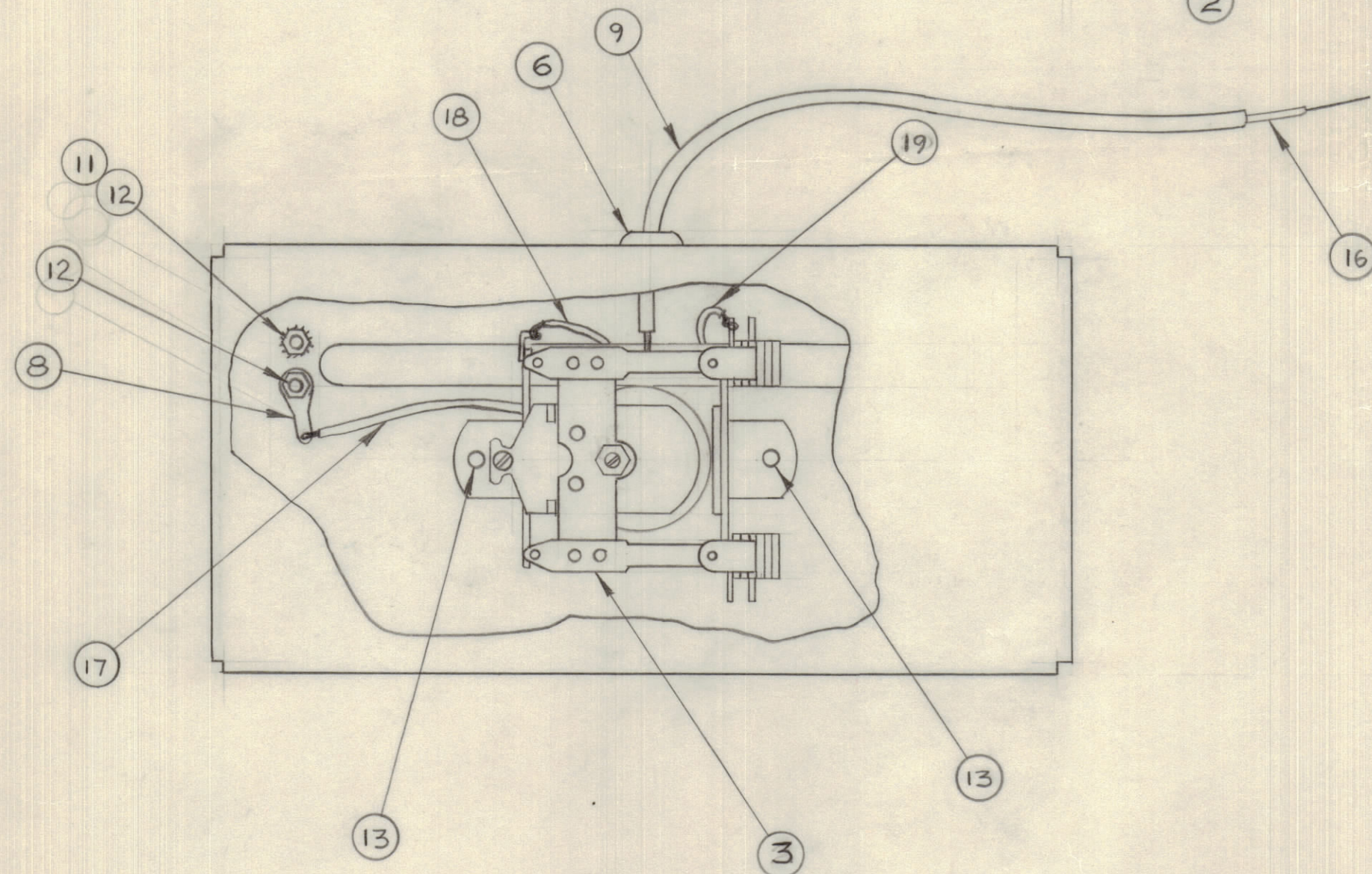
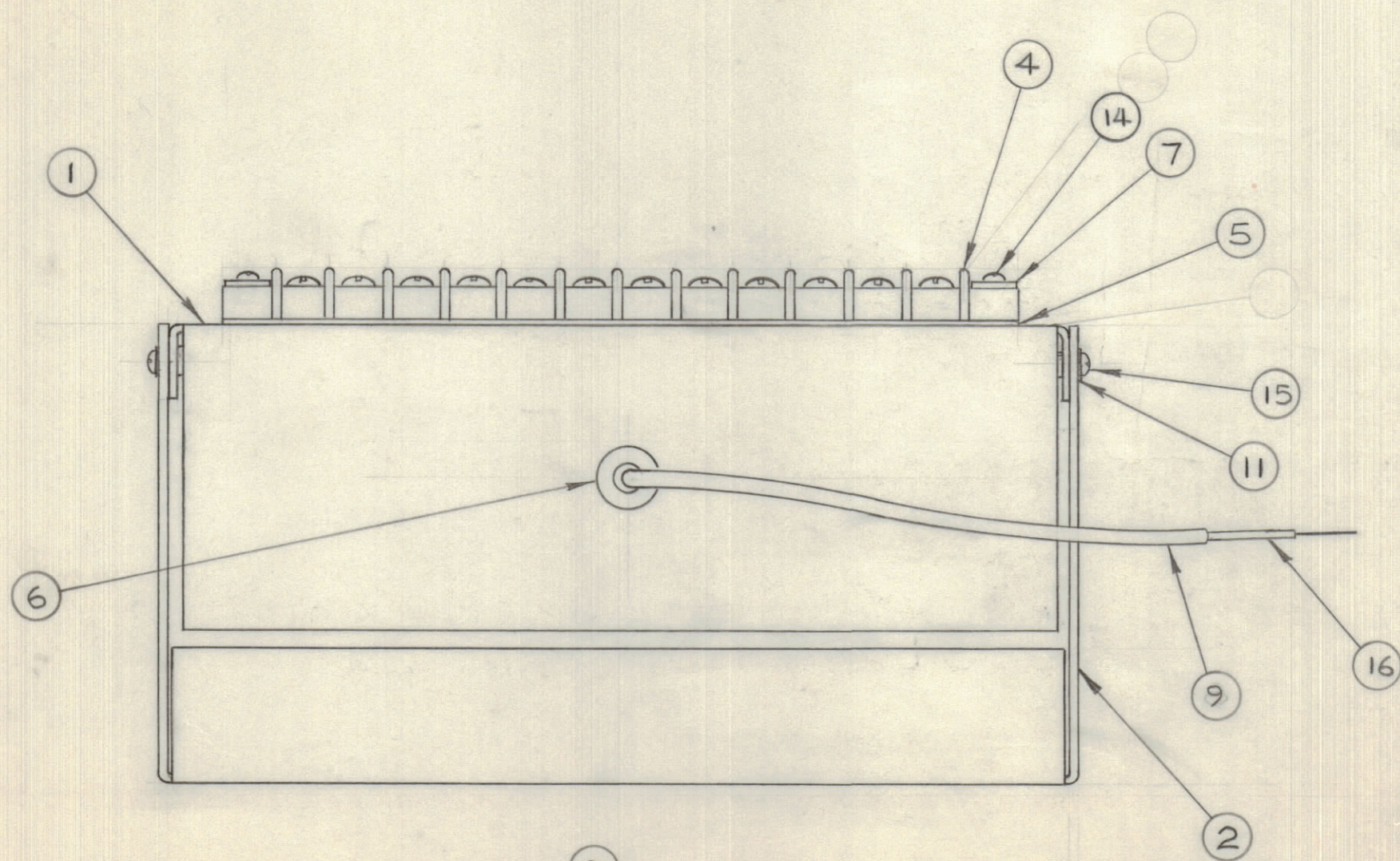
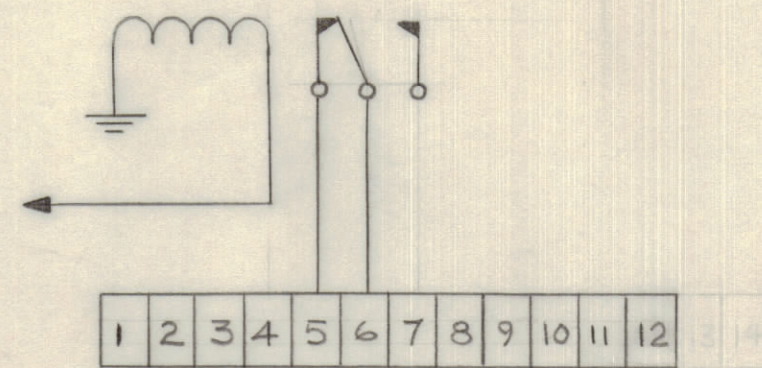


IF IT IS FOUND DESIRABLE TO CHANGE ANY TOLERANCE OR OTHER DETAIL SPECIFIED ON THIS DRAWING NOTIFY THE PURCHASER PROMPTLY.		DIMENSIONS IN INCHES UNLESS OTHERWISE SPECIFIED					
MAXIMUM ALLOWABLE TOLERANCES HAVE BEEN DETERMINED AND DEVIATIONS WILL BE CAUSE FOR REJECTION. REMOVE ALL BURRS AND SHARP EDGES.							
ISSUE	ITEM	CHANGED FROM	DATE	CN. NO.	DRAFTS	CHECKER	ENG. APP.
0		RELEASED TO PROD.	NOV 16/66		RPL		



REQ.	ITEM	PART NO.	DESCRIPTION	SYMBOL
1	1	LD10238/MS10754	CHASSIS, MAIN	
1	2	MS10752	COVER, CHASSIS MAIN	
1	3	RL10032	RELAY, PLATE CIRCUIT	
1	4	TM100-12	TERMINAL, STRIP	
1	5	PX337-12	INSULATOR, TERMINAL STRIP	
1	6	EY102-2	GROMMET, RUBBER	
2	7	MS154-1	STRADDLE, PLATE	
1	8	TE104-1	TERMINAL, LOCKING	
24"	9	PX100-4-116	INSULATION, SLEEVING ELECTRICAL	
2	10	LWE06MRN	WASHER, LOCK EXTERNAL	
7	11	LWE04MRN	WASHER, LOCK EXTERNAL	
4	12	NTH0440BN8	NUT, HEX.	
2	13	SCBP0632BN4	SCREW, MACHINE	
4	14	SCBP0440BN9	SCREW, MACHINE	
4	15	SCBP0440BN5	SCREW, MACHINE	
26"	16	MWC22(7)U2	WIRE, ELECTRICAL INSULATED	
AR	17	MWC22(7)U0		
AR	18	MWC22(7)U91		
AR	19	MWC22(7)U92	WIRE, ELECTRICAL INSULATED	

A10539 ∅



SCHMATIC

NOTE:
RELAY SHOWN ENERGIZED

TOLERANCES		SCALE: 1:1
ALL OTHERS	DEC. DIM. ± FRAC. DIM. ± ANGULAR DIM. ±	DRILL, PUNCH, COMMERCIAL STOCK SIZES AND MANUFACTURERS TOLERANCES ARE NOT INCLUDED.

GPT-5K	KIT 10015	NOV. 4/66
MODEL	PROJECT NO.	ASS'Y. NO.
USED ON		

STOCK SIZE		TMC (Canada) LIMITED OTTAWA ONTARIO	
MATERIAL		ASS'Y. PTT MOD.	
TYPE & TEMPER		RPL	
HEAT TREAT. SPEC.		CHECKED	FINAL APPROVAL
FINISH & SPEC. NO.		LACRIOX	A10539 ∅