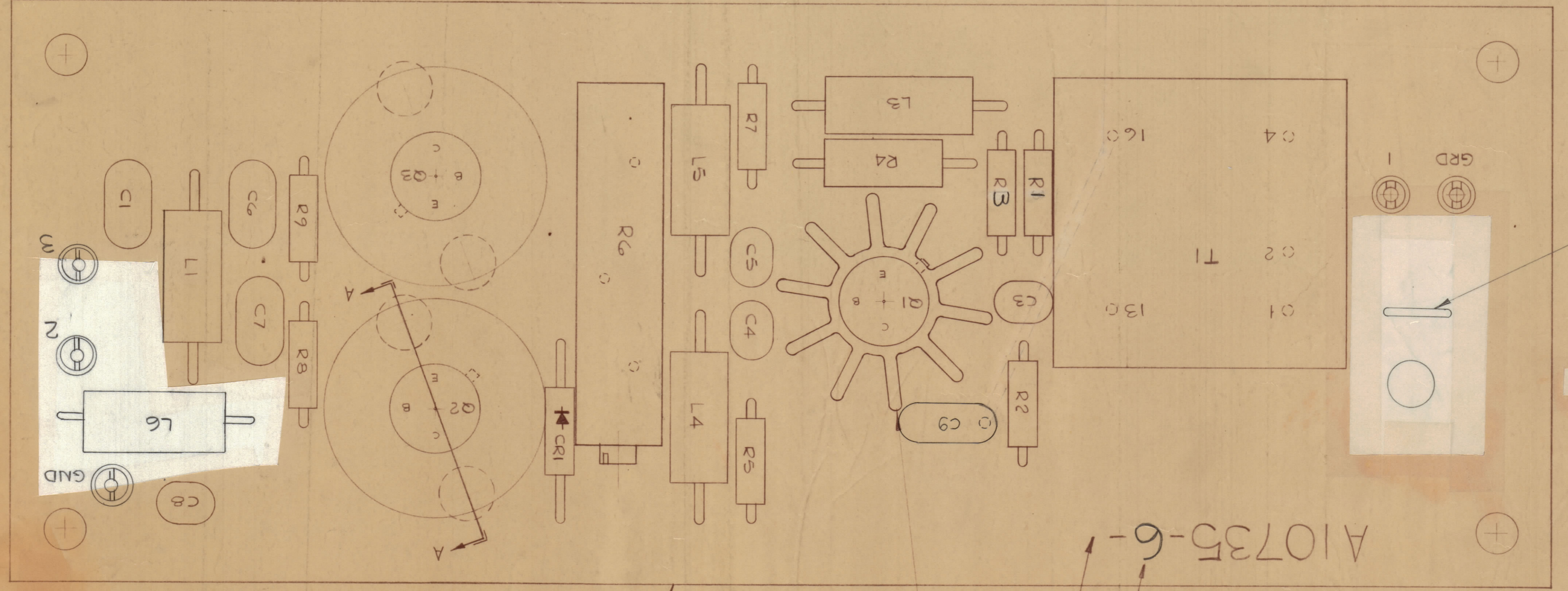
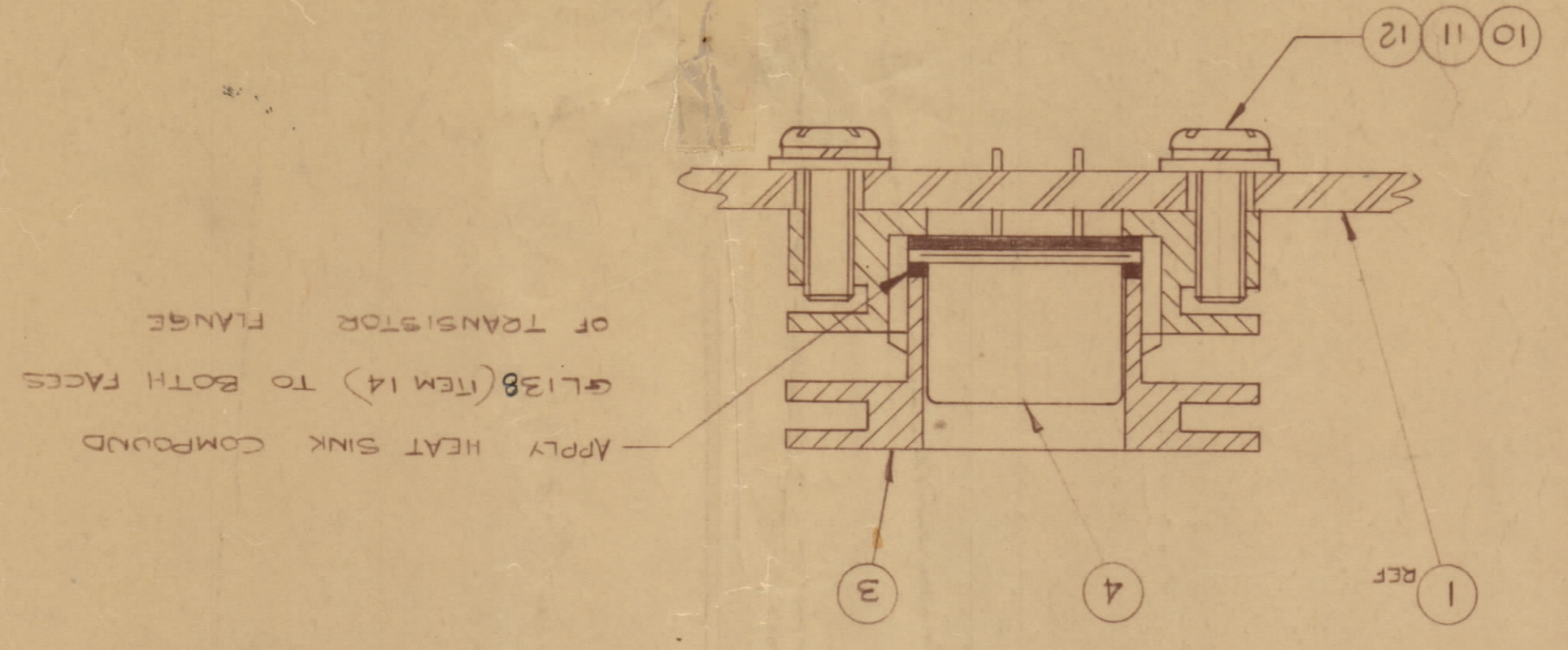


MODEL	AMC 21
PROJECT NO.	
ASSY NO.	
DATE	29 JAN 69
USED DIM	
FINISH & SPEC. NO.	
HEAT TREAT SPEC.	
CHECKED	
DRAWN	S.M. SOON
ELEC DES APP	
Mech DES APP	
FINAL APPROV	
SHEET	6 OF 8
DRAWING NO.	A10735-6 H

TYPICAL ASSY FOR Q2A Q3

SECTION A-A



A10735-6

TMC PART NO. COMPLETE WITH LATEST REV LETTER  
 ADD DASH NUMBER

FACE OF Q1  
 GL138 (ITEM 14) TO SIDE

Apply HEAT SINK COMPOUND

NO	ITEM	PART NO.	DESCRIPTION
1	1	A10735-4	PC ASSY (CAB) PRC AMPLIFIER
2	2	HD10002-7	HEAT SINK
3	3	HD10004	HEAT SINK
4	4	Q1, Q2, Q3	TRANSISTOR
5	5	R1, R2, R3, R4, R5, R7, R8, R9	RESISTOR, FIXCD
6	6	C1, C2, C3, C4, C5, C6, C7, C8, C9	RESISTOR, VARIABLE
7	7	L1, L2, L3, L4, L5, L6	CAPACITOR
8	8	Q1	DIODE
9	9		COIL RF
10	10	FW 02 HBN	WASHER - FLAT
11	11	LWS 02 MRN	WASHER LOCK SPRIT
12	12	SCRP020204	SCREW
13	13	PX 829-1	PAD TRANSISTOR MTA
14	14	GL138	COMPOUND, SILICONE, HEAT SINK
15	15		TRANSFORMER
17	17		

REV	DATE	CHANGED FROM	BY	CHKD	APP
A	11 MAR 69	REV AS PER CEMN	AP		
B	18 APR 69	REV AS PER CEMN	FB		
C	17 FEB 72	REV AS PER CEMN	OP		
D	17 FEB 72	REV AS PER CEMN	OP		
E	18 FEB 72	SEE SHEET B	CC LB		
F	18 FEB 72	REV PER CEMN	DM		
G	19 FEB 72	L6 Added	LD		
H	19 FEB 72	Q1 @ RECDOWN W/quantity	LD		

A10735-6 I