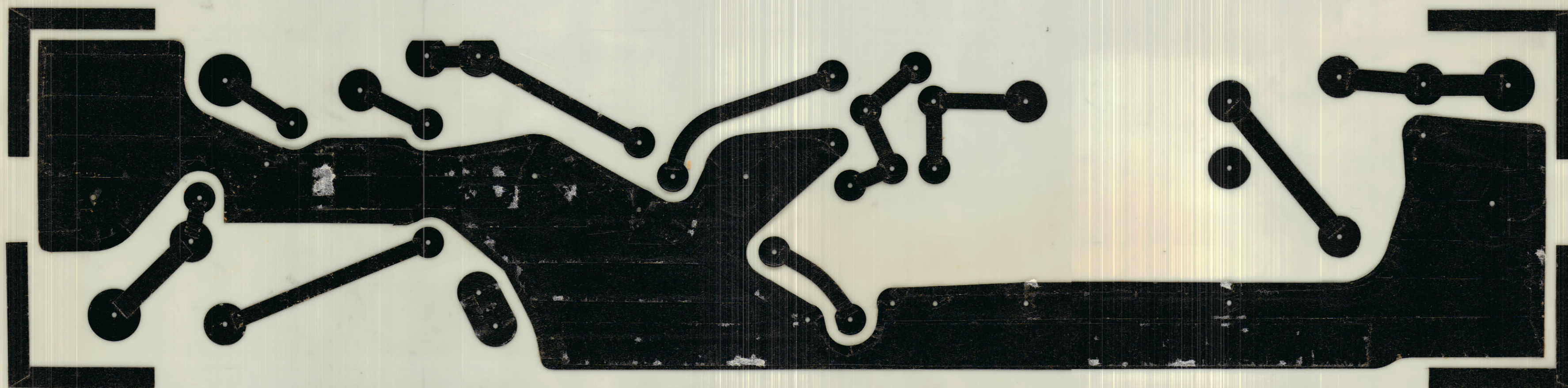


ISSUE	ITEM	CHANGED FROM	DATE	CN. NO.	DRAFTS	CHECKER	ENG. APP.
0		REL TO PROD			AP		KaH

NOTE:

CONDUCTIVE PATTERN TO BE:-  
 PLATED WITH A MINIMUM OF .0003 INCH THK.  
 OF TIN LEAD.



SCALE 4:1  
NEGATIVE 1:1  
BOTTOM PATTERN

REF. A10751-2 (FOR MACHINING)

AMC 8	074/69		OCT 26/68	TMC (Canada) LIMITED OTTAWA ONTARIO	
MODEL	PROJECT NO.	ASS'Y. NO.	DATE	PRINTED CIRCUIT	
USED ON				ASS'Y PRE-AMP	
MAXIMUM ALLOWABLE TOLERANCES HAVE BEEN DETERMINED AND DEVIATIONS WILL BE CAUSE FOR REJECTION. REMOVE ALL BURRS AND SHARP EDGES.  IF IT IS FOUND DESIRABLE TO CHANGE ANY TOLERANCE OR OTHER DETAIL SPECIFIED ON THIS DRAWING NOTIFY THE PURCHASER PROMPTLY.				MATERIAL	WEIGHT PER PC.
				TYPE & TEMPER	
TOLERANCES				DRAWN AP KaH	
SCALE 4:1				ELEC. DES. APP. MECH. DES. APP.	
DIMENSIONS IN INCHES UNLESS OTHERWISE SPECIFIED DRILL, PUNCH, COMMERCIAL STOCK SIZES AND MANUFACTURERS TOLERANCES ARE NOT INCLUDED.				CHECKED	
ALL OTHERS	DEC. DIM. ±	FRAC. DIM. ±	ANGULAR DIM. ±	FINAL APPROVAL	
FINISH & SPEC. NO.				SHEET 1 of 6 A10751-1 0	