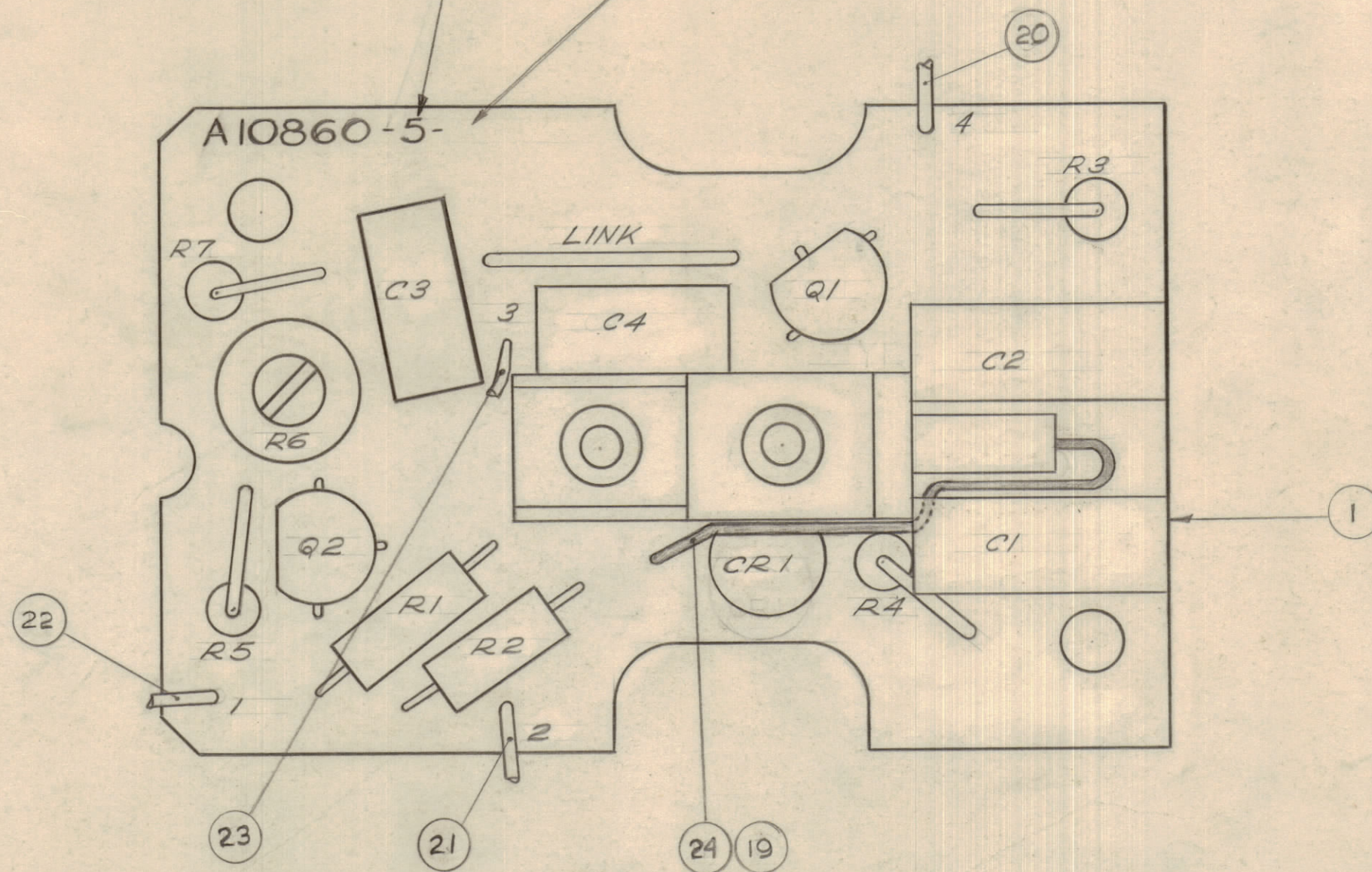


IF IT IS FOUND DESIRABLE TO CHANGE ANY TOLERANCE OR OTHER DETAIL SPECIFIED ON THIS DRAWING NOTIFY THE PURCHASER PROMPTLY.		DIMENSIONS IN INCHES UNLESS OTHERWISE SPECIFIED					
MAXIMUM ALLOWABLE TOLERANCES HAVE BEEN DETERMINED AND DEVIATIONS WILL BE CAUSE FOR REJECTION. REMOVE ALL BURRS AND SHARP EDGES.							
ISSUE	ITEM	CHANGED FROM	DATE	CN. NO.	DRAFTS	CHECKER	ENG. APP.
A		REVISION PER CEMN	13 DEC 71	1101	C.C.	PL	[Signature]
B		REVISION PER CEMN	28 JAN 72	1125	CC	PL	[Signature]

ADD LATEST REVISION LETTER
ADD DASH NO.

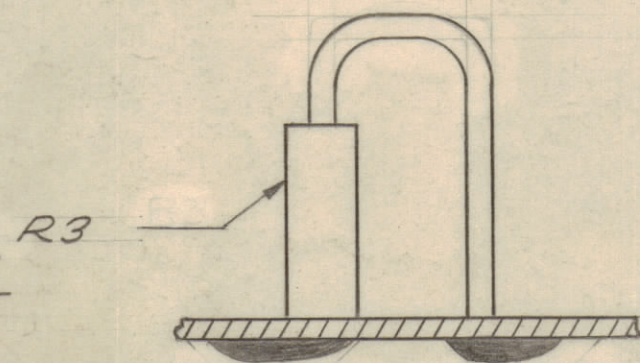


REQ.	ITEM	PART NO.	DESCRIPTION	USED ON	REMARKS
1		A 10860-1	P.C. BD. ETCHING	A 10860-2	
1		A 10860-2	P.C. BD. MACHINING	A 10860-3	
1		A 10860-3	P.C. BD. LETTERING	A 10860-4	
1		A 10860-4	P.C. BD. SUB-ASSEMBLY	A 10860-5	
	2				
2	3	CC 100-29	CAP. FXD, CERAMIC	A 10860-5	C3, C4
2	4	CM10002-F-360J	CAP. FXD, MICA	A 10860-5	C1, C2
	5				
1	6	RC07GF122J	RESISTOR, FXD. COMP	A 10860-5	R4
1	7	RC07GF152J	RESISTOR, FXD. COMP	A 10860-5	R5
3	8	RC07GF221J	RESISTOR, FXD. COMP	A 10860-5	R2, R3, R7
1	9	RC07GF335J	RESISTOR, FXD. COMP	A 10860-5	R1
1	10	RV124-1-102	RESISTOR, VARIABLE	A 10860-5	R6
	11				
1	12	MV2109	DIODE	A 10860-5	CR1
2	13	2N3904	TRANSISTOR	A 10860-5	Q1, Q2
	14				
1	15	EY100-1	EYELET, METAL	A 10860-4	
1	16	EY100-2	EYELET, METAL	A 10860-4	
1	17	FC102-1XN	CLIP, FUSE	A 10860-4	
2	18	WJ219-18-9	JACK, TIP	A 10860-4	
1/2	19	PX104-1-022	INS., SLEEVING	A 10860-5	
1/2	20	WI140-E28E0	WIRE, ELECTRICAL, TEF	A 10860-5	
1/2	21	WI140-E28E2	WIRE, ELECTRICAL, TEF	A 10860-5	
1/2	22	WI140-E28E7	WIRE, ELECTRICAL, TEF	A 10860-5	
1/2	23	WI140-E28E9	WIRE, ELECTRICAL, TEF	A 10860-5	

A-10860-5 B

1/2	24	WL100-8	WIRE, ELECTRICAL, BUSS	A 10860-5	
	25				
1	26	MS10647	BRACKET, MTG, XTAL	A 10860-4	
	27				
1	28	WA101-1	WASHER, FIBRE	A 10860-4	
	29				
	30	CK10755	SCHEMATIC DIAGRAM	A 10860-5	REF.

TYPICAL COMPONENT ASSEMBLY



TOLERANCES		SCALE: 4:1
ALL	DEC. DIM. ± .08	DRILL, PUNCH, COMMERCIAL STOCK
OTHERS	FRAC. DIM. ± 1/64	SIZES AND MANUFACTURERS
	ANGULAR DIM. ± 0°30'	TOLERANCES ARE NOT INCLUDED.

AO10001			16 DEC 71
AO10002	102/70		16 DEC 71
MODEL	PROJECT NO.	ASS'Y. NO.	DATE

STOCK SIZE		TMC (Canada) LIMITED	
MATERIAL		OTTAWA ONTARIO	
		P.C. BOARD ASSEMBLY	
		H.F.O. OVEN	
		C. CHARLES	
		A. PROCTOR	
		SHEET 5 of 5	
		A-10860-5 B	