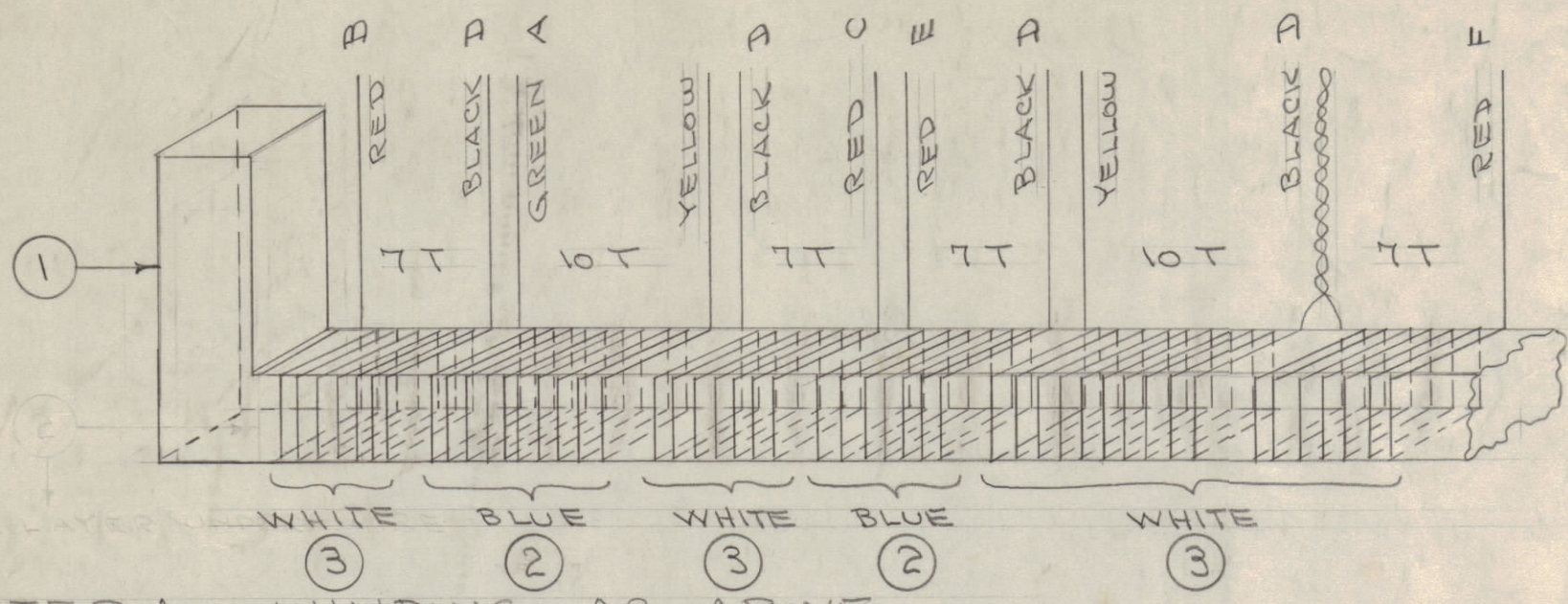


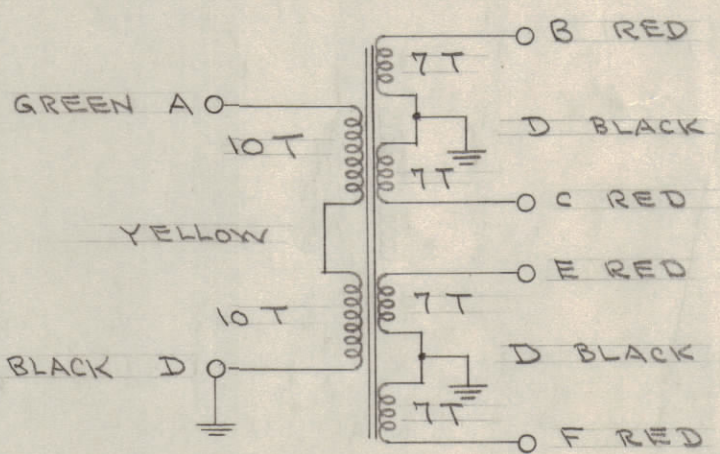
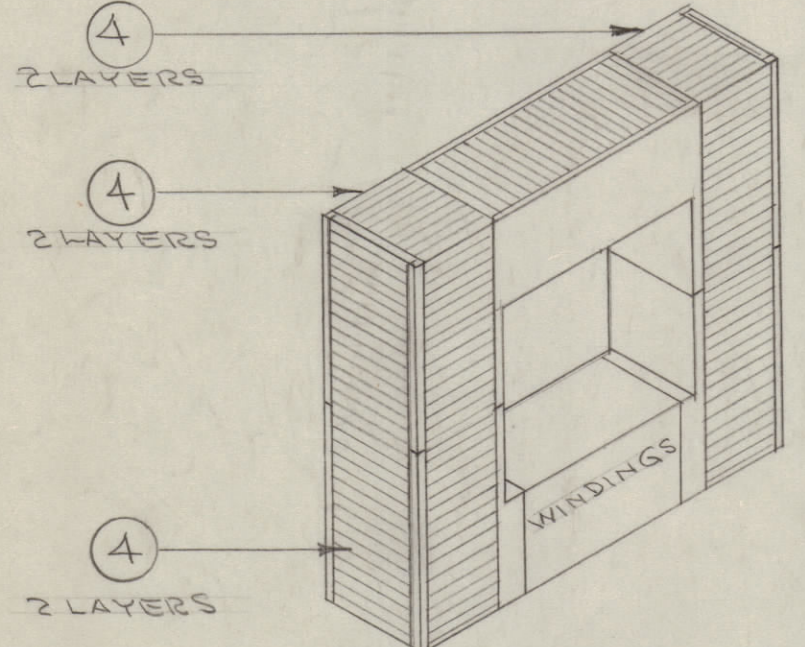
IF IT IS FOUND DESIRABLE TO CHANGE ANY TOLERANCE OR OTHER DETAIL SPECIFIED ON THIS DRAWING NOTIFY THE PURCHASER PROMPTLY.  
 MAXIMUM ALLOWABLE TOLERANCES HAVE BEEN DETERMINED AND DEVIATIONS WILL BE CAUSE FOR REJECTION. REMOVE ALL BURRS AND SHARP EDGES

COLOR CODE LEADS AS SHOWN

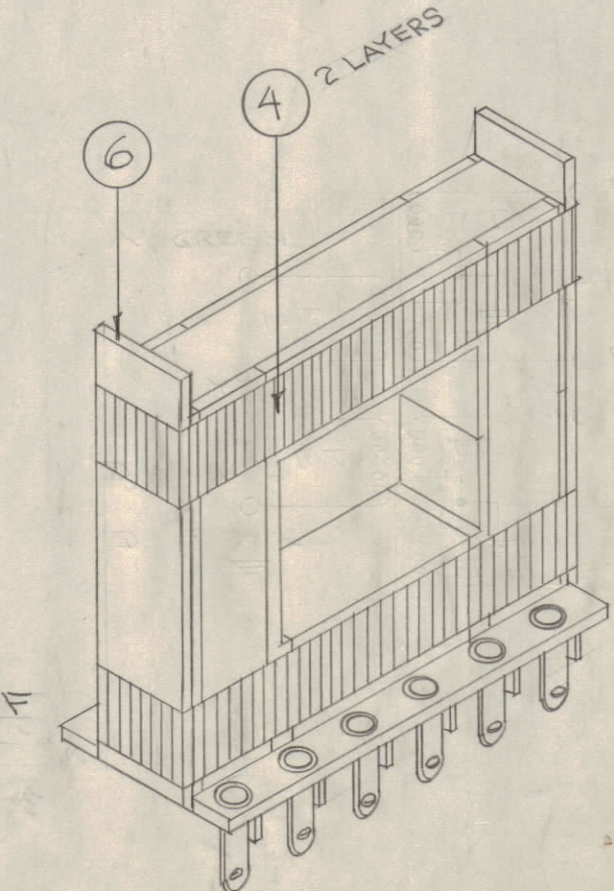
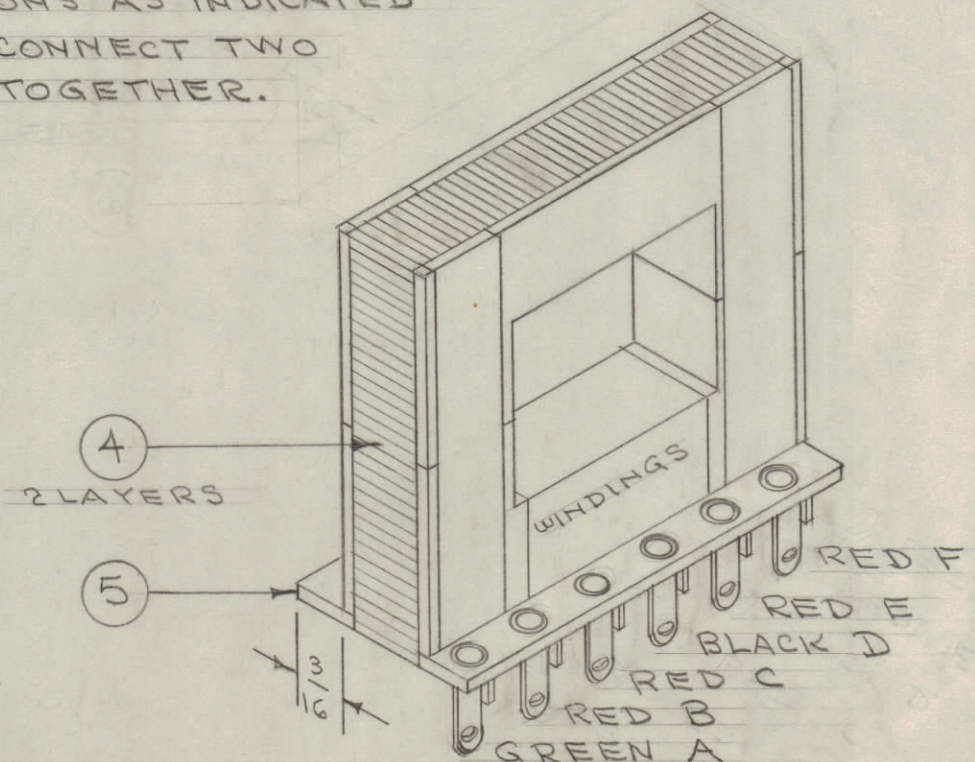


STEP 1 - WINDING - AS ABOVE

STEP 2 - BELOW  
 TAPE CORES TOGETHER AS SHOWN

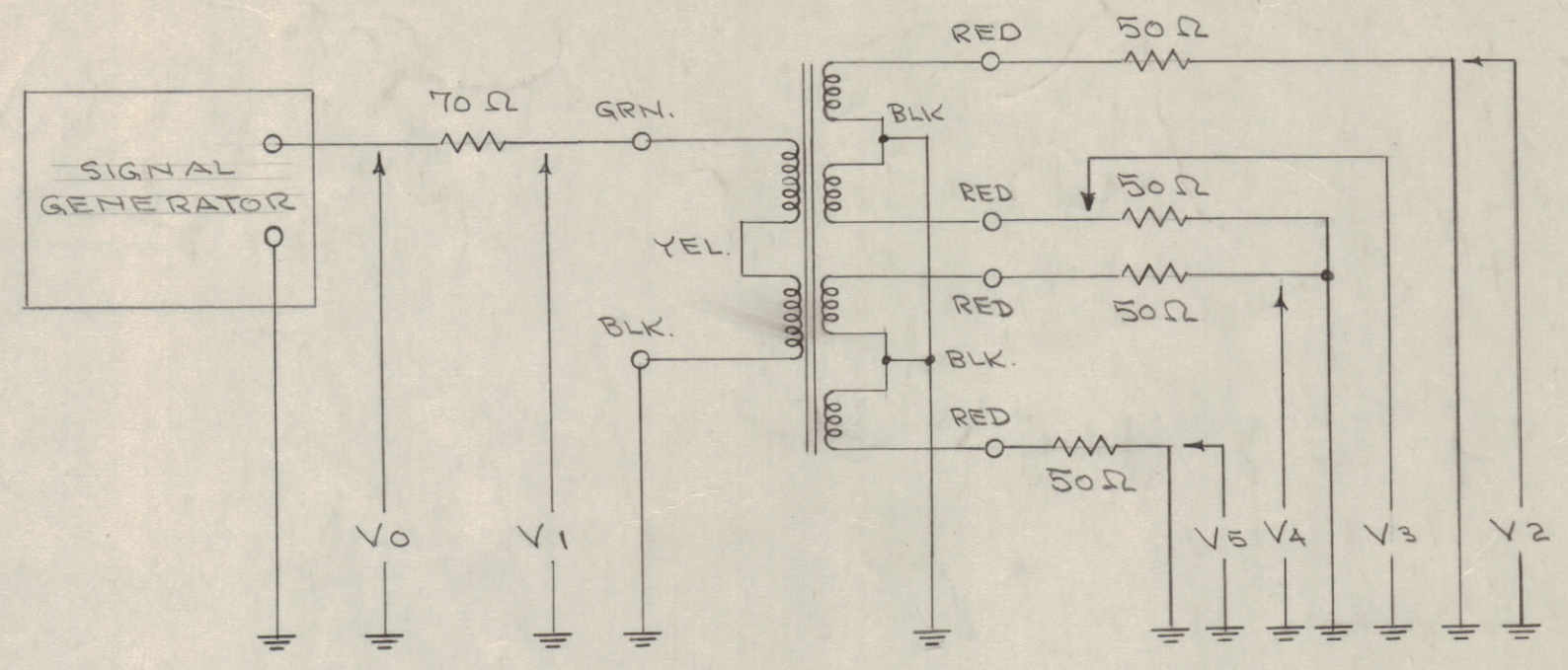


STEP 3 - BELOW  
 TAPE ON TERM. BOARD AND MAKE CONNECTIONS AS INDICATED BY LETTERS. CONNECT TWO YELLOW LEADS TOGETHER.



STEP 4 - ABOVE  
 TAPE ON 2 SIDE SUPPORTS AS SHOWN.

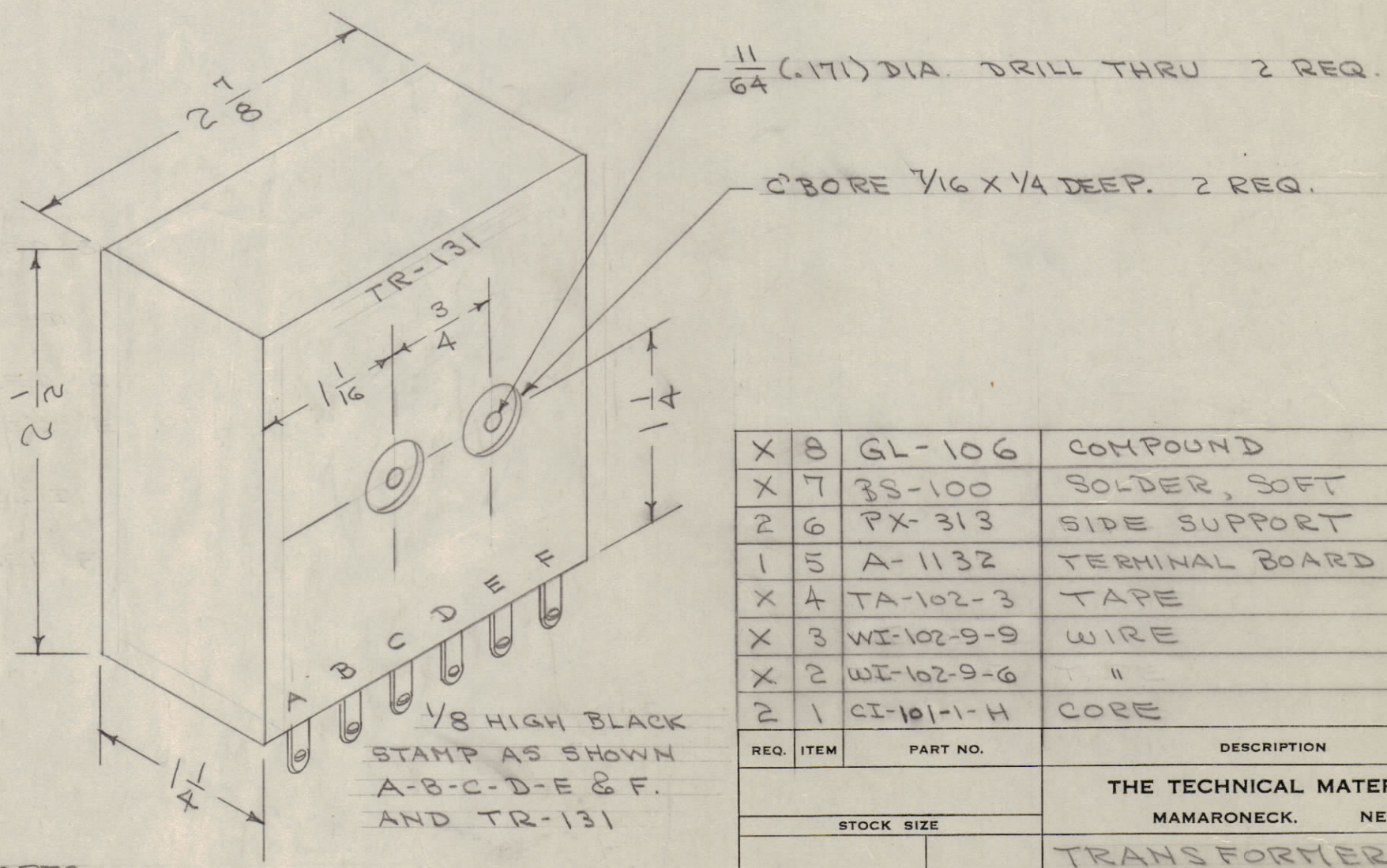
TEST



FREQ. KC.	V <sub>0</sub>	V <sub>1</sub>	V <sub>2</sub>	V <sub>3</sub>	V <sub>4</sub>	V <sub>5</sub>
15	1V	.44	0.1	0.1	0.1	0.1
500	1V	.55	.15	.15	.15	.15
1000	1V	.57	.15	.15	.15	.15
2000	1V	.68	.14	.14	.14	.15

HEATHKIT VTVM TOL. ± 10%

STEP 5 BELOW  
 POT & MACHINE AS SHOWN.



X 8	GL-106	COMPOUND
X 7	3S-100	SOLDER, SOFT
2 6	PX-313	SIDE SUPPORT
1 5	A-1132	TERMINAL BOARD
X 4	TA-102-3	TAPE
X 3	WI-102-9-9	WIRE
X 2	WI-102-9-6	"
2 1	CI-101-1-H	CORE

REQ. ITEM	PART NO.	DESCRIPTION	SYMBOL
THE TECHNICAL MATERIEL CORP. MAMARONECK, NEW YORK			
TRANSFORMER ASSY.			
LOW FREQ. DIST. TR-131 LFD-12			
TYPE & TEMPER		CDP 11/4/55	ARB 88
HEAT TREAT. SPEC.		13	A.J.J.
FINISH & SPEC. NO.		CHECKED	FINAL APPROVAL

NOT TO BE RELEASED  
 W/O AUTHORIZATION  
 AUTH. BY.....  
 DATE:.....

A-1133 A

A 1	ITEM 1 WAS CI-103	6/14/54	1	FILE	FILE	AMB
ISSUE ITEM	CHANGED FROM	DATE	CN. NO.	DRAFTS	CHECKER	ENG. APP.
TOLERANCES		SCALE:				
ALL OTHERS	DEC. DIM. ± FRAC. DIM. ± ANGULAR DIM. ±	DRILL, PUNCH, COMMERCIAL STOCK SIZES AND MANUFACTURERS TOLERANCES ARE NOT INCLUDED.				

1	LFD-12			11-4-55
PER UNIT	MODEL	PROJECT NO.	ASSY. NO.	DATE
USED ON				