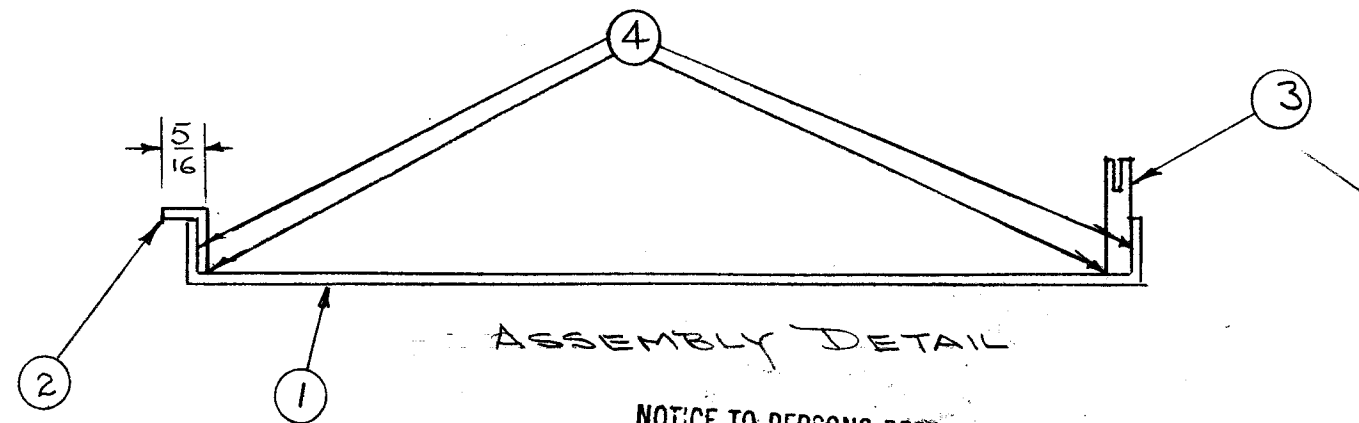
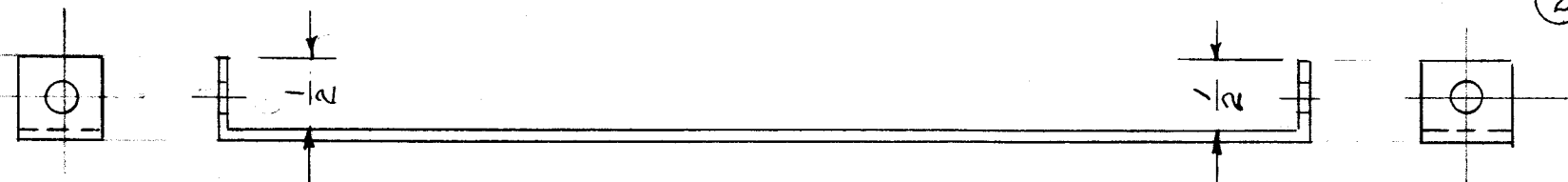


A 1142



ASSEMBLY DETAIL

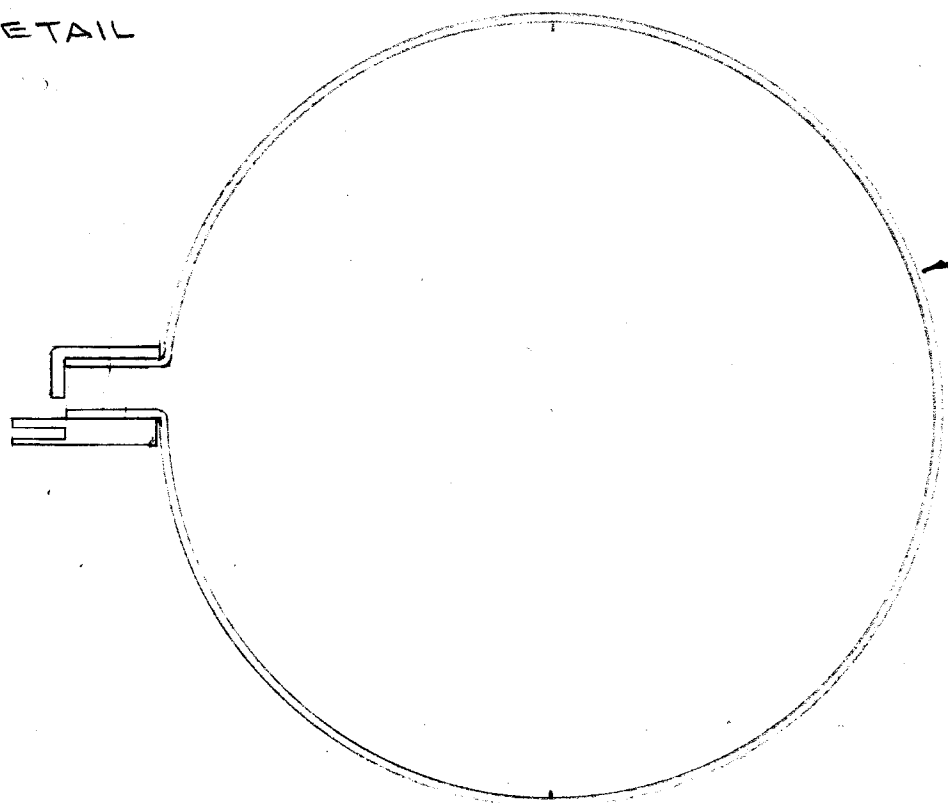
NOTICE TO PERSONS RECEIVING THIS DRAWING

THE TECHNICAL MATERIEL CORPORATION claims proprietary right in the material disclosed hereon. This drawing is issued in confidence for engineering information only and may not be reproduced or used to manufacture anything shown hereon without permission from THE TECHNICAL MATERIEL CORPORATION to the user. This drawing is loaned for mutual assistance and is subject to recall at any time.

Property of:
THE TECHNICAL MATERIEL CORPORATION
MAMARONECK, NEW YORK

NOTE:
FORM AS SHOWN.

- NOTE:
1. BEND AS SHOWN
2. SILVER SOLDER AS SHOWN IN DETAIL



ISSUE	ITEM	CHANGED FROM	DATE	CH. NO.	DRAFTS	CHECKER	ENG. APP.
G		ADD IT. 4 CALLOUT & -1 TO P/N	3-1-67	17871	RME		
F	1	ON BLDUP ITEM 1 UPDATED	11/2/63	10310			
E	1	ADDED S423 CLEAR IRIDITE FINISH	4-17-63	8792			
D	1	ITEM (1) WAS MS-202-3-13.25	11-8-62	7632			
C	2	PICTORIAL REVISED	1/6/58	3			
B	3	ITEM 1 WAS MS-148					
B	2	STEP 2 WAS STEP 3 (STEP 2 DATE)	10/25/57	2			
A	2	ITEM 4 WAS BS-100					
A	1	12 1/2 WAS 12 7/8	1/23/56	1			
A	1	13 WAS 12 5/8					

REQ. ITEM	PART NO.	DESCRIPTION	SYMBOL
X 4	BS 101-1	SOLDER, SILVER	
1 3	PM 375-	END, CONTACT STRAP	
1 2	PM 378	" " "	
1 1	MS 202-3-13.37	CONTACT STRAP	
.025		THE TECHNICAL MATERIEL CORP.	
STOCK SIZE		MAMARONECK, NEW YORK	
COPPER FLASHING		CONTACT STRAP SUB ASSY.	
MATERIAL		TER-3500	

TOLERANCES: DEC. DIM. ±, FRAC. DIM. ±, ANGULAR DIM. ±

SCALE: MAXIMUM ALLOWABLE TOLERANCES HAVE BEEN DETERMINED AND ANY DEVIATIONS WILL BE CAUSE FOR REJECTION. REMOVE ALL BURRS AND SHARP EDGES

4	TER-3500-300	A-1144	2-8-61	
4	TER-3500-70	A-1144	10-23-57	
4	TER-3500	A-1143/4	11-10-55	
REQ. PER UNIT	MODEL	PROJECT NO.	ASS'Y. NO.	DATE

TYPE & TEMPER	HEAT TREAT. SPEC.	DRAWN	CHECKED	FINAL APPROVAL
S245 SILVER PLATE .0001 & S423 CLEAR IRIDITE		ARB	WR	A 1142