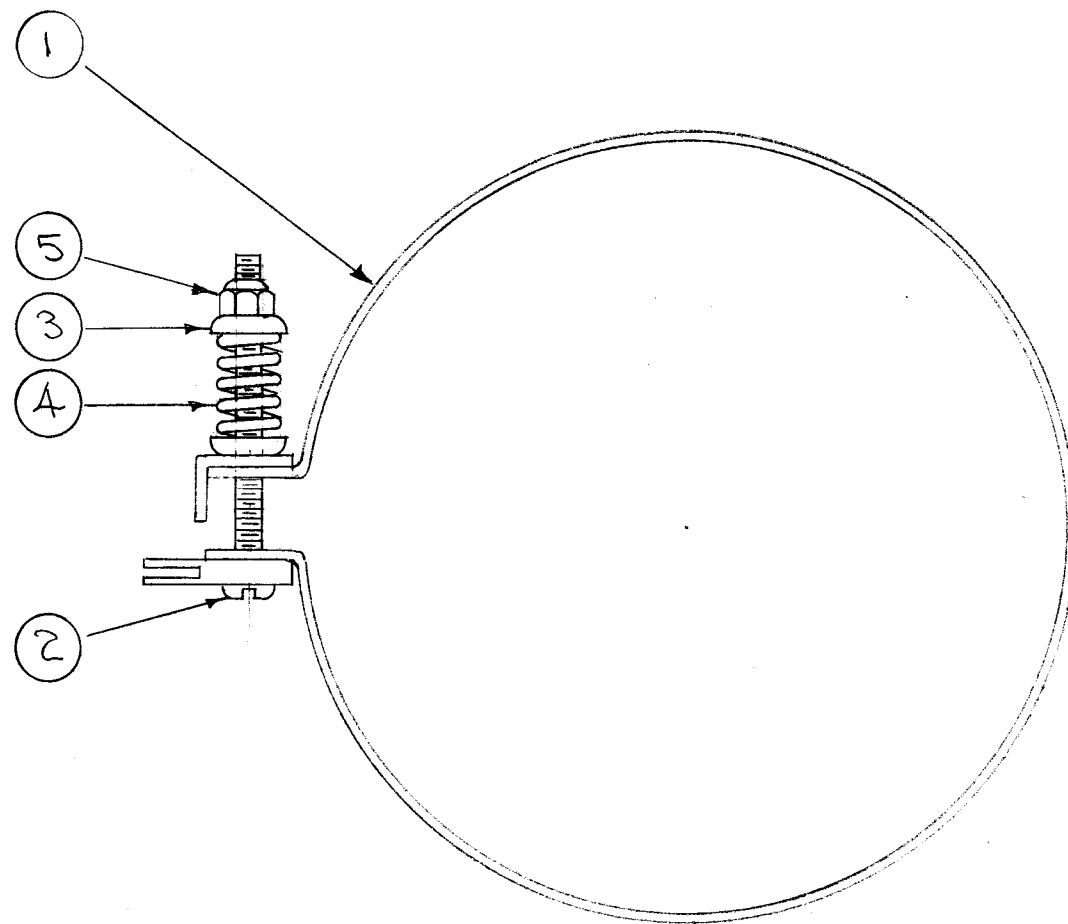


A-1144 B



NOTICE TO PERSONS RECEIVING THIS DRAWING

THE TECHNICAL MATERIEL CORPORATION claims proprietary right in the material disclosed hereon. This drawing is issued in confidence for engineering information only and may not be reproduced or used to manufacture anything shown hereon without permission from THE TECHNICAL MATERIEL CORPORATION to the user. This drawing is loaned for mutual assistance and is subject to recall at any time.

Property of:
THE TECHNICAL MATERIEL CORPORATION
MAMARONECK, NEW YORK

REQ. ITEM	PART NO.	DESCRIPTION	SYMBOL
1 5	SM-12755632	NUT, SELF LOCKING HEX.	
1 4	SP-116-N	SPRING	
2 3	WA-118-2	WASHER, CUP	
1 2	SCBP0632BN18	SCREW, MACHINE	
1 1	A-1142	CONTACT STRAP SUB ASSY.	
STOCK SIZE		THE TECHNICAL MATERIEL CORP. MAMARONECK, NEW YORK	
MATERIAL		BTM. CONTACT STRAP ASSY. TER-3500	
TYPE & TEMPER		HEAT TREAT. SPEC.	DRAWN
FINISH & SPEC. NO.		ELEC. DES. APP.	MECH. DES. APP.

ISSUE	ITEM	CHANGED FROM	DATE	CH. NO.	DRAFTS	CHECKER	ENG. APP.
B	2	SM-12755632 WAS NT-114-33-6-32	11/2/63	10210			
A	2	MODEL TER-3500-30 APPROVED	2/14/64	4139			
		TOLERANCES					
		SCALE:					
		MAXIMUM ALLOWABLE TOLERANCES HAVE BEEN DETERMINED AND ANY DEVIATIONS WILL BE CAUSE FOR REJECTION. REMOVE ALL BURRS AND SHARP EDGES					

REQ. PER UNIT	MODEL	PROJECT NO.	ASS'Y. NO.	DATE
4	TER-3500-300		A-2053	
4	TER-3500-70		A-1471	10-22-57
2	TER-3500		A-1145	11-10-55

USED ON