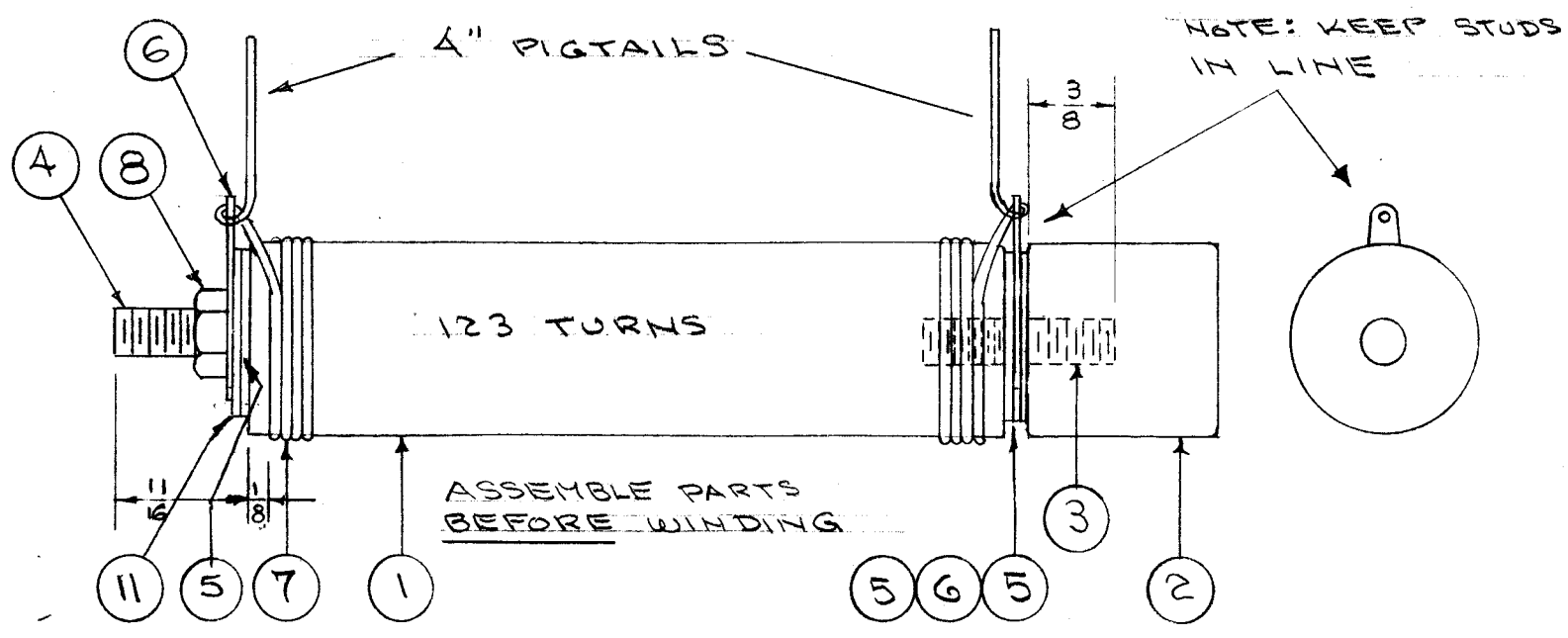
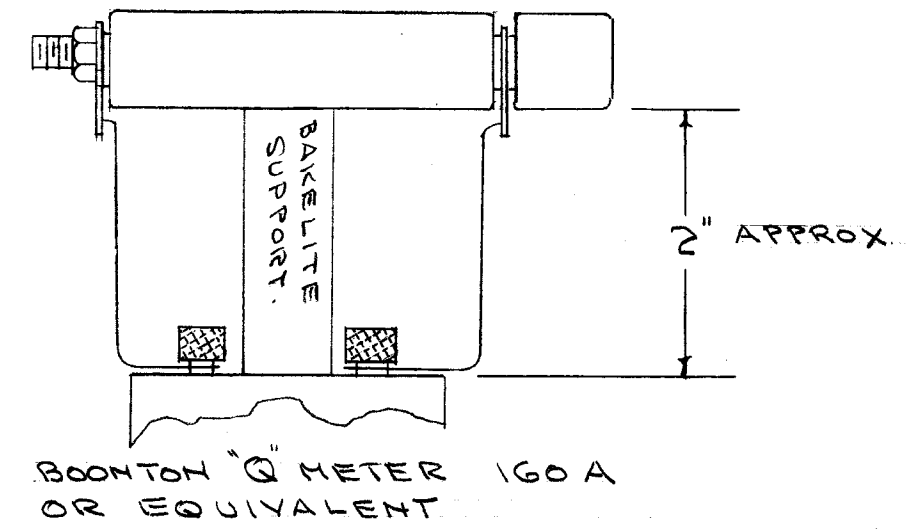


A-1162 C



TEST DATA
 L - 100 μ hy \pm 5%
 Q - 170 OR OVER
 R - 2.5 MC.



AFTER TEST REMOVE PIGTAILS.

WINDING
 123 CLOSE WOUND TURNS OF WI-107-3 STARTING 1/8" FROM END AS SHOWN.
 SOLDER ENDS TO LUGS LEAVING 4" PIGTAILS FOR HANGING COIL IN OVEN,
 AND FOR TEST PURPOSES.

WINDING MACHINE DATA:
 DRIVER GEAR -
 CAM GEAR -
 CAM -

FABRICATION -

- 1- ASSEMBLE HARDWARE TIGHTLY TOGETHER AS ABOVE.
- 2- COVER STUD WITH TAPE TO PREVENT FLOODING WITH INSULEX.
- 3- COAT ENTIRE COIL WITH INSULEX U-85.
- 4- BAKE FOR 2 HOURS AT 250° F.
- 5- ALLOW TO COOL

NOTICE TO PERSONS RECEIVING THIS DRAWING

THE TECHNICAL MATERIEL CORPORATION claims proprietary right in the material disclosed hereon. This drawing is issued in confidence for engineering information only and may not be reproduced or used to manufacture anything shown hereon without permission from THE TECHNICAL MATERIEL CORPORATION to the user. This drawing is loaned for mutual assistance and is subject to recall at any time.

Property of:
 THE TECHNICAL MATERIEL CORPORATION
 MAMARONECK, NEW YORK

NOTE:
 USE A-1529 WHICH IS A
 DIRECT REPLACEMENT.
 4/15/58

REQ.	ITEM	PART NO.	DESCRIPTION	SYMBOL
1	11	FW25MBC	WASHER, FLAT	
X	10	GL-104-2	INSULEX U-85	
X	9	BS-100	SOLDER, SOFT	
1	8	NTH2520BC1A	NUT, HEX	
X	7	WI-107-3	WIRE	
2	6	TE-111-1	LUG	
3	5	WA-109-55	WASHER, FIBER	
1	4	SC-126-2	STUD 1"	
1	3	SC-126-1	STUD 3/4"	
1	2	NS-3-W-04-08	INSULATOR	
1	1	NS-3-W-04-32	"	

THE TECHNICAL MATERIEL CORP. MAMARONECK, NEW YORK			
CHOICE, PA. TANK - LOW FREQ L108 POWER, AMPL. GPT-750			
MATERIAL		CD 1/30/58	A. J. J.
TYPE & TEMPER	HEAT TREAT. SPEC.	DRAWN	CHECKED
		110	Woe
FINISH & SPEC. NO.		ELEC. DES. APP.	MECH. DES. APP.
			A-1162 C

ISSUE	ITEM	CHANGED FROM	DATE	CH. NO.	DRAFTS	CHECKER	ENG. APP.
C	2	ITEM 6 WAS TE-104-5	5-9-57	3	4	J.H.D.	A.J.J.
	1	11/16 WAS 9/16					
B	1	9/16 & 3/8 DIM. ADDED	3/26/56	2	13	J.H.D.	A.J.J.
A	1	ITEM 7 WAS WI-120-3	1/31/56	1	13	J.H.D.	A.J.J.

TOLERANCES
 DEC. DIM. \pm
 FRAC. DIM. \pm
 ANGULAR DIM. \pm

SCALE:
 MAXIMUM ALLOWABLE TOLERANCES HAVE BEEN DETERMINED AND ANY DEVIATIONS WILL BE CAUSE FOR REJECTION.
 REMOVE ALL BURRS AND SHARP EDGES

1	RT F			11-30-55
REQ. PER UNIT	MODEL	PROJECT NO.	ASS'Y. NO.	DATE
				USED ON