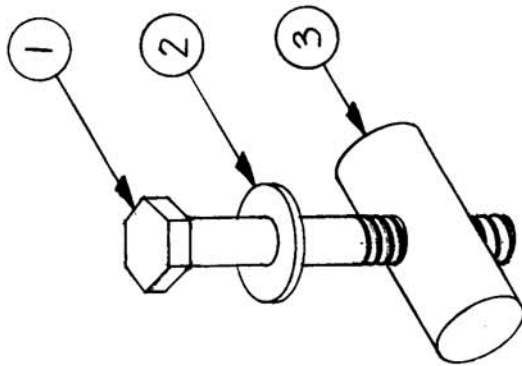


THE CONTENTS OF THIS DRAWING ARE THE EXCLUSIVE PROPERTY OF THE TECHNICAL MATERIEL CORP. ITS UNAUTHORIZED USE OR REPRODUCTION IN WHOLE OR IN PART IS STRICTLY FORBIDDEN.



REQ. PART UNIT	MODEL	USED ON
4	RAC	ASS'Y. NO.
		DATE
		8-1-62

A-1166

1	3	PM-100	HINGE PIN	SYMBOL
1	2	FW25MSS	WASHER, FLAT	
1	1	SC-108-9	SCREW, HEXAGONAL	
REQ. ITEM	PART NO.	DEGREED DESCRIPTION		
		THE TECHNICAL MATERIEL CORP.		
		MAMARONECK, NEW YORK		
		HARDWARE KIT, COVER		
		MATERIAL	M. TANTILLO	
		TYPE & TEMPER	8-1-62	
		HEAT TREAT. SPEC.	DRAWN	
		FINISH & SPEC. NO.	CHECKED	
			8-2-62	
				FINAL APPROVAL
				A-1166
				ELEC. DES. APP. MECH. DES. APP.

UNLESS OTHERWISE SPECIFIED:
 DIMENSIONS ARE IN INCHES
 TOLERANCES ON
 FRAC. $\pm 1/64$ DEC. $\pm .005$ ANGLES $\pm 1/2^\circ$

SCALE:
 MAXIMUM ALLOWABLE TOLERANCES HAVE BEEN DETERMINED AND ANY DEVIATIONS WILL BE CAUSE FOR REJECTION.
 REMOVE ALL BURRS AND SHARP EDGES

DATE CH. NO. DRAFTS CHECKER ENG. APP.