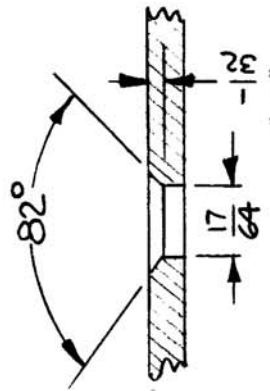
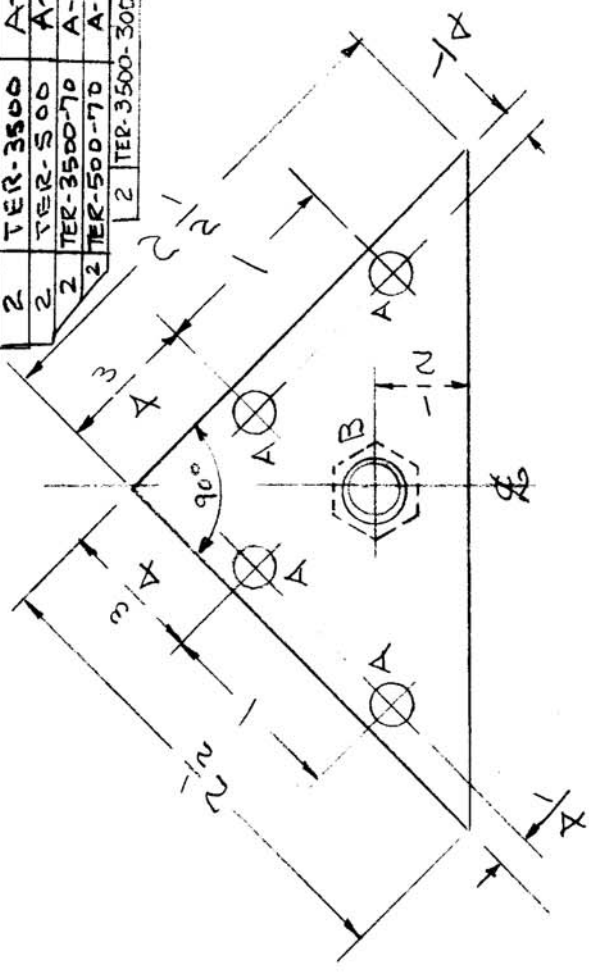


A-1183

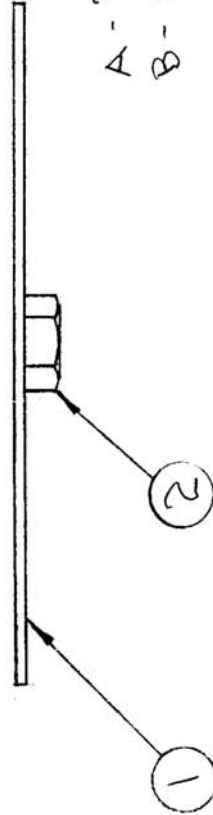
C

USED ON		
REQ. PER UNIT	MODEL	DATE
2	TER-3500	12-19-56
2	TER-500	8-21-56
2	TER-3500-70	10-23-57
2	TER-500-70	10-23-57
2	TER-3500-300	2-8-61



DETAIL "B"

A - 3/16(.1875) DIA. 4 HOLES REQ.
 B - SEE DETAIL 1 " "



REQ. ITEM	PART NO.	DESCRIPTION	SYMBOL
1	SM-107-43	INSERT, HEX.	
1	MS-759	TOP COVER SUPPORT (NO DWG.)	
.064		STOCK SIZE	
ALUMINUM		MATERIAL	
S2S H32		TYPE & TEMPER	
5404-IRIDITE		HEAT TREAT. SPEC.	
FINISH & SPEC. NO.		FINISH APPROVAL	
DRAWN		CHECKED	
ELEC. DES. APP.		MECH. DES. APP.	

ISSUE ITEM	CHANGED FROM	DATE	CH. NO.	DRAFTS	CHECKER	ENG. APP.
C	DETAIL "B" ADDED	9-17-64	12396	ATB	Ⓞ	Ⓞ
B	8404 IRIDITE WAS 6101 CAUSTIC DIP	12-27-59	1001	JP	EMN	Ⓞ
A	1/4 WAS 7/32	8/21/56	1	JAB	Ⓞ	Ⓞ

TOLERANCES	
DEC. DIM. ±	±
FRAC. DIM. ±	± 1/64
ANGULAR DIM. ±	±

SCALE:	MAXIMUM ALLOWABLE TOLERANCES HAVE BEEN DETERMINED AND ANY DEVIATIONS WILL BE CAUSE FOR REJECTION.	REM VE ALL BURRS AND SHARP EDGES
1" = 1"		