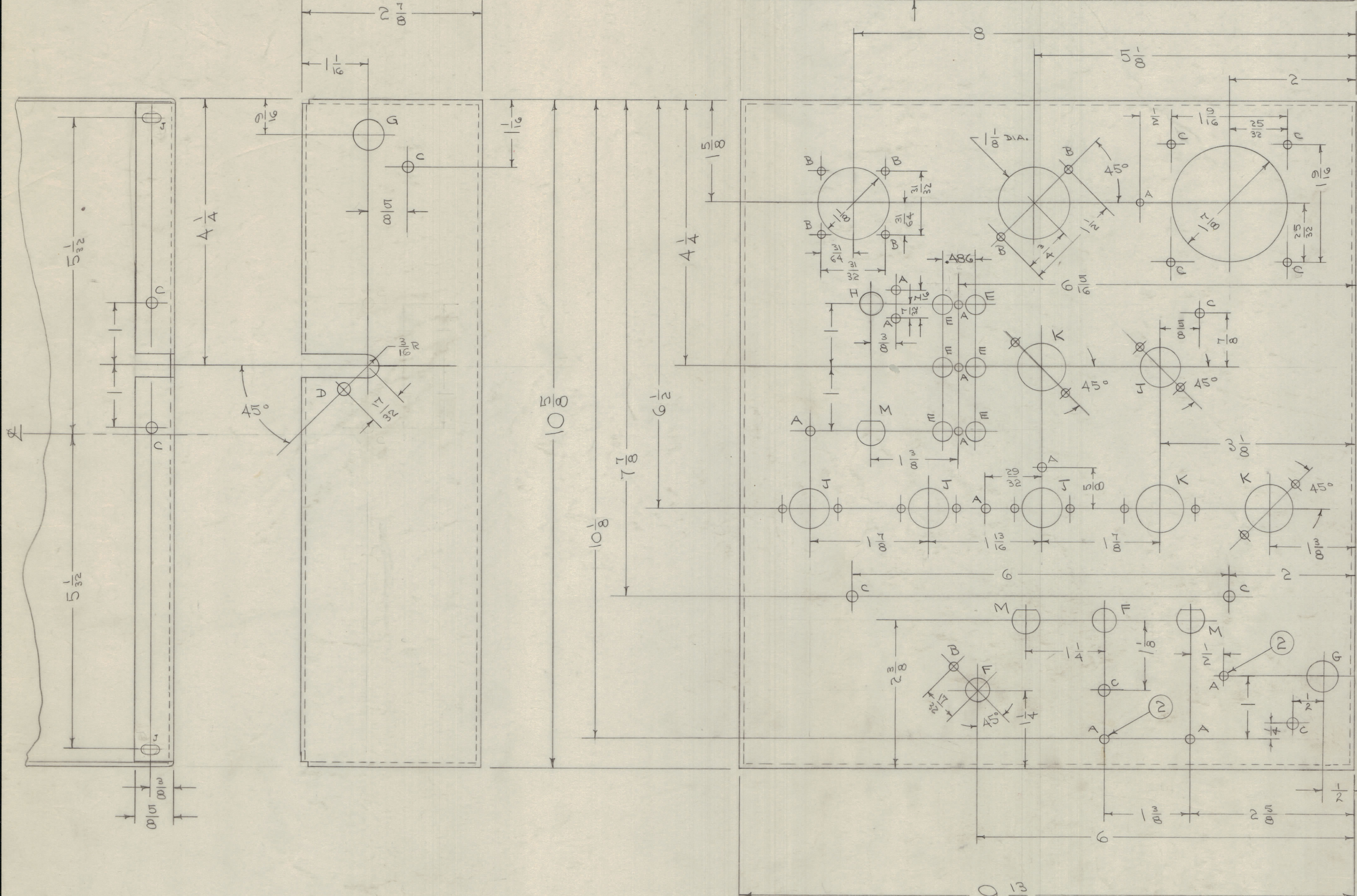
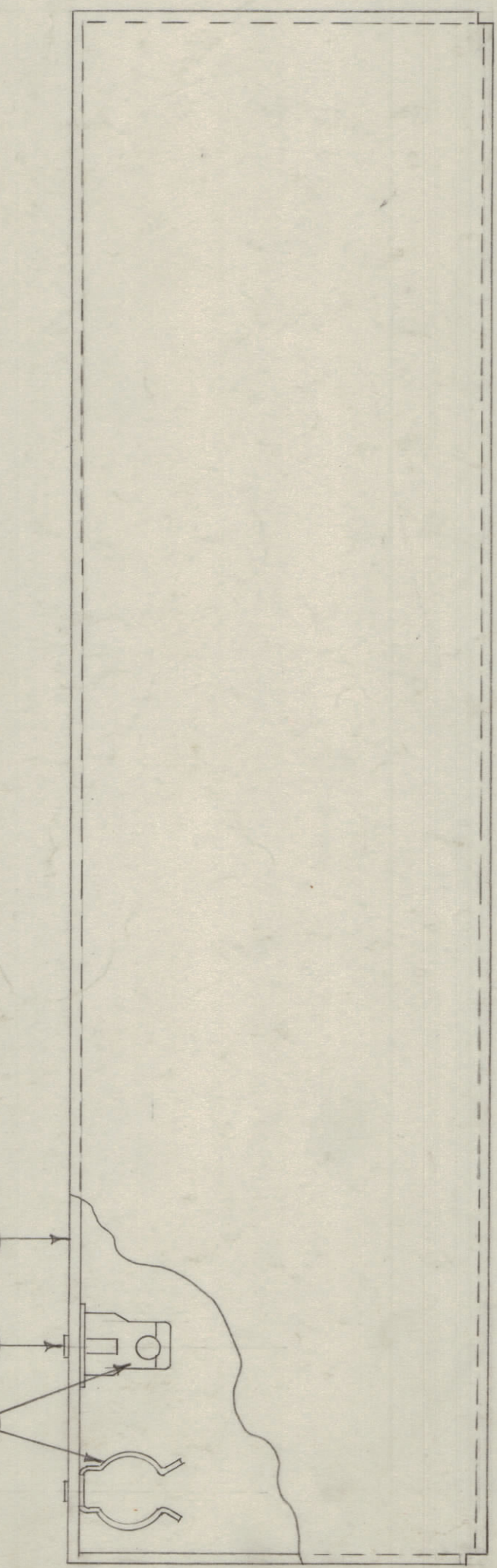
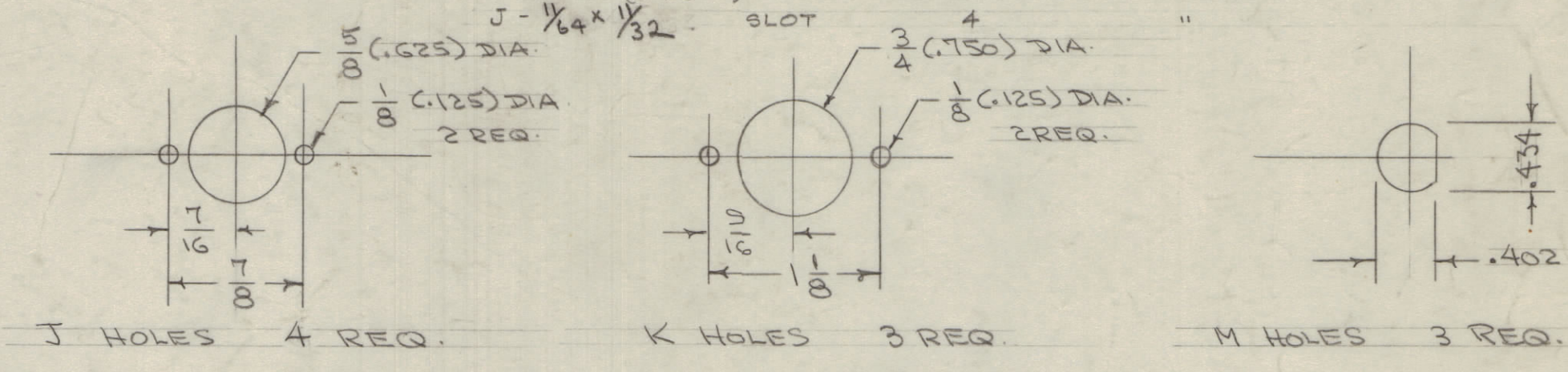


IF IT IS FOUND DESIRABLE TO CHANGE ANY TOLERANCE OR OTHER DETAIL SPECIFIED ON THIS DRAWING NOTIFY THE PURCHASER PROMPTLY.
 MAXIMUM ALLOWABLE TOLERANCES HAVE BEEN DETERMINED AND DEVIATIONS WILL BE CAUSE FOR REJECTION. REMOVE ALL BURRS AND SHARP EDGES

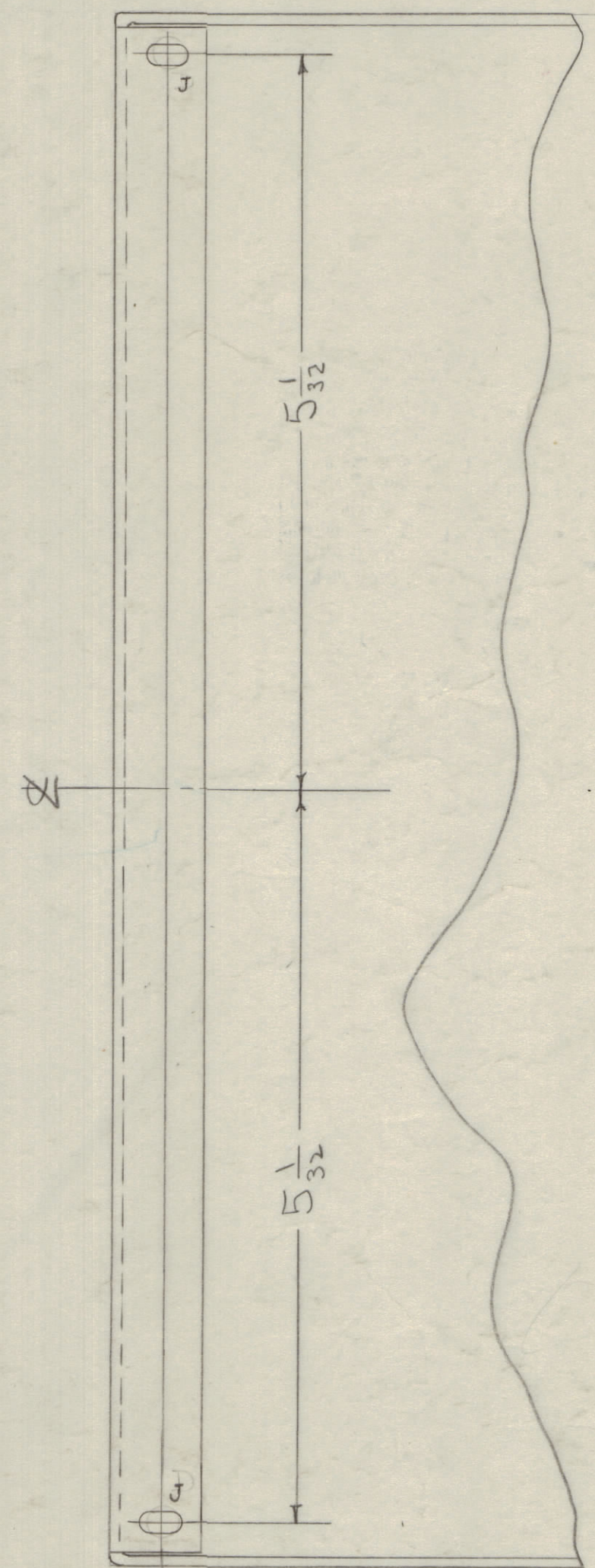


A	1/8 (.125) DIA.	12 HOLES REQ.
B	9/64 (.140) "	7 " "
C	11/64 (.171) "	12 " "
D	13/64 (.203) "	1 " "
E	9/32 (.281) "	6 " "
F	13/32 (.406) "	2 " "
G	1/2 (.500) "	2 " "
H	7/16 (.437) "	1 " "
J	1/4 x 1/32 SLOT	4 " "



NOTE POSITION OF CLAMPS

NOTICE TO PERSONS RECEIVING THIS DRAWING
 THE TECHNICAL MATERIEL CORPORATION claims proprietary right in the material disclosed herein. This drawing is issued in confidence for engineering information only and may not be reproduced or used to manufacture anything shown hereon without permission from THE TECHNICAL MATERIEL CORPORATION. This drawing is loaned for mutual assistance and is subject to recall at any time.
 Property of:
 THE TECHNICAL MATERIEL CORPORATION
 MAMARONECK, NEW YORK



D	1	S-404 IRIDITE WAS	9/1/59	1001	AG	EMN	
C	1	S-101 CAUSTIC DIP	9/2/59	3	SSS	EMN	
B	1	1" A' HOLE ADDED	7/29/58	2	CSB	EMN	
A	4	ITEM 3 WAS EY-100-1					
	3	3/16" R. WAS 3/8" R. ERROR					
	2	H' HOLE WAS F' HOLE					
	1	J' SLOTS WERE D' HOLES					
ISSUE	ITEM	CHANGED FROM	DATE	CN. NO.	DRAFTS	CHECKER	ENG. APP.
TOLERANCES		SCALE:					
ALL	DEC. DIM. ±	DRILL, PUNCH, COMMERCIAL STOCK					
OTHERS	FRACTIONAL DIM. ± 1/4 A	SIZES AND MANUFACTURERS					
	ANGULAR DIM. ±	TOLERANCES ARE NOT INCLUDED.					

REF- LD-252 (STAMPING)			
2	3	EY-100-2	EYELET, FLAT FLANGE
2	2	FC-100-G	CLAMP
1	1	MS-718	CHASSIS (NO DRAWING)
REQ. ITEM	PART NO.	DESCRIPTION	
.064			
STOCK SIZE			
ALUMINUM		INTERCONNECT CHASSIS ASSY.	
MATERIAL		WEIGHT PER PC.	
525 H32		GPT-750	
TYPE & TEMPER		DRAWN	
		ELEC. DES. APP.	
HEAT TREAT. SPEC.		MECH. DES. APP.	
S-404 IRIDITE		H.J.J.	
FINISH & SPEC. NO.		CHECKED	
		FINAL APPROVAL	
		A-1189 D	

1	RTF	PROJECT NO.	ASSY. NO.	12-22-55
REQ. PER UNIT	MODEL	DATE	USED ON	

A-1189 D