

ASSEMBLY NOTES

1. TO MOUNT COMPONENTS INSERT LEADS THROUGH HOLES.
2. CAUTION, WHEN APPLYING HEAT & SOLDER TO LEAD & FOIL.
3. CLEAN & INSPECT AS PER SPEC S676.
4. FOR ELECTRICAL COMPONENT PART NUMBERS REFER TO NPL A
5. USE SYMBOL NUMBERS FOR ASSY. REF.

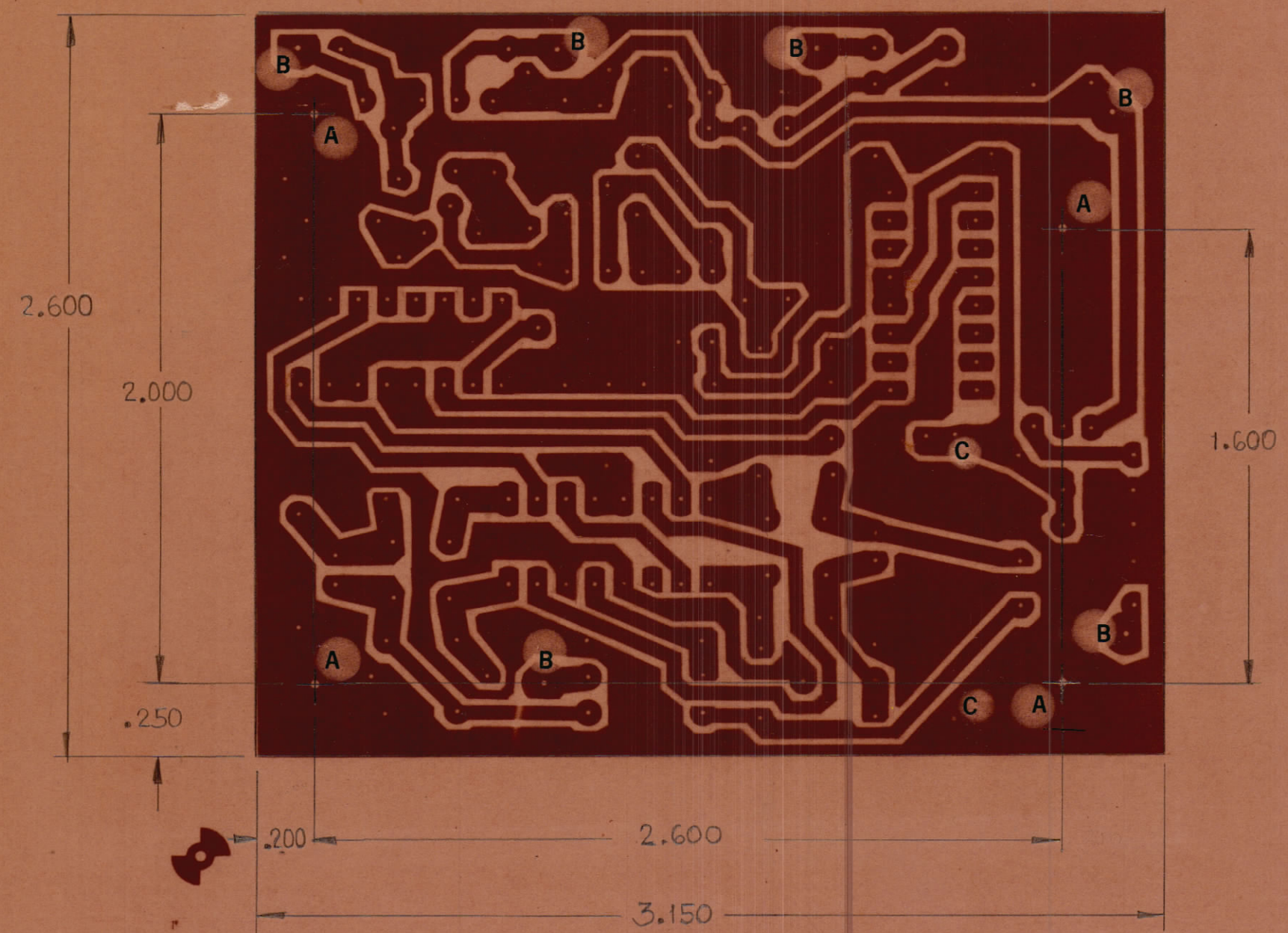
IF IT IS FOUND DESIRABLE TO CHANGE ANY TOLERANCES OR OTHER DETAIL SPECIFIED ON THIS DRAWING NOTIFY THE PURCHASER PROMPTLY.

MAXIMUM ALLOWABLE TOLERANCES HAVE BEEN DETERMINED AND WILL BE CAUSE FOR REJECTION REMOVE ALL BURRS AND SHARP EDGES.

ISSUE	ITEM	CHANGED FROM
A		COMPLY REDESIGN

REDUCE TO 3.500 BETWEEN TRAMMEL POINTS

HOLE	DESCRIPTION	QTY
A	.140	4
B	.081	6
C	.052	2
UNMARKED	.040	~



NOTES: ~

1. MATERIAL - PLASTIC SHEET LAMINATE COPPER CLAD FL-GE-062-C-2/0.
2. FINISH --- CONDUCTIVE PATTERN TO BE PLATED WITH A MINIMUM OF .0003 THICK TIN/LEAD
3. THIS BOARD MUST MEET THE REQUIREMENTS OF TMC SPEC. S735.

A11041-2 A

TOLERANCES		SCALE
DEC DIM	XX.05	2:1
FRACTIONAL DIM	XX.01	
ANGULAR DIM	XX.1.005	

DRILL, PUNCH, COMMERCIAL STOCK SIZES AND MANUFACTURERS TOLERANCES ARE NOT INCLUDED

MMX-3	110/71	A11041-5	12 Sept 73
MODEL	PROJECT NO	ASSY NO	DATE

STOCK SIZE		TMC (Canada) LIMITED	
SEE NOTE 1		OTTAWA ONTARIO	
MATERIAL		P.C. BOARD MACHINING	
WEIGHT PER PCB		MINOR LOOP V.C.O.	
TYPE & TEMPER		DRAWN: <i>Y.F. Lee</i> ELEC. DES. APP: <i>SWITTEN</i> MECH. DES. APP:	
HEAT TREAT. SPEC		CHECKED: <i>SWITTEN</i> FINAL APPROVAL:	
SEE NOTES 2 & 3		SHEET 2 OF 5	
FINISH & SPEC. NO.		A11041-2 A	