

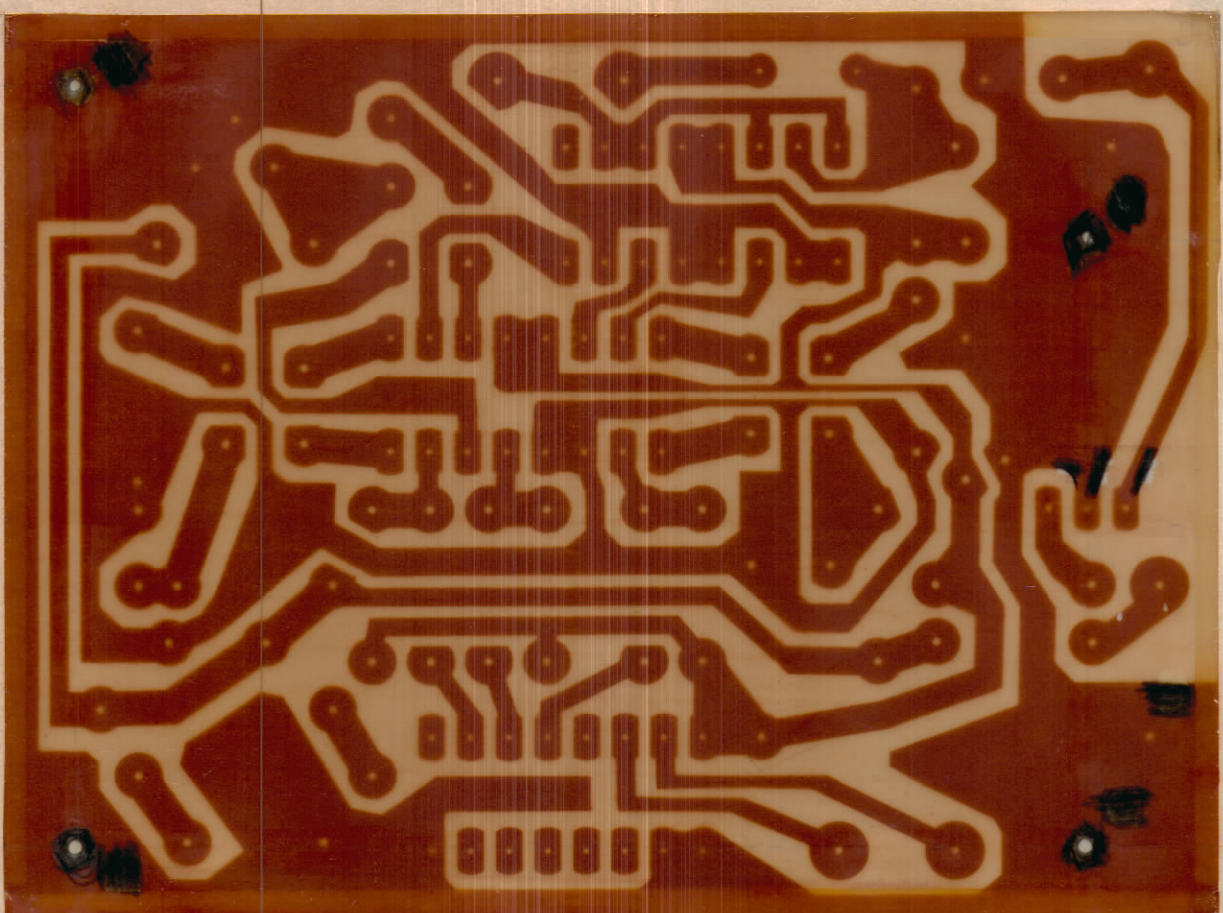
IF IT IS FOUND DESIRABLE TO CHANGE ANY TOLERANCE OR OTHER DETAIL SPECIFIED ON THIS DRAWING NOTIFY THE PURCHASER PROMPTLY.

MAXIMUM ALLOWABLE TOLERANCES HAVE BEEN DETERMINED AND DEVIATIONS WILL BE CAUSE FOR REJECTION. REMOVE ALL BURRS AND SHARP EDGES.

DIMENSIONS IN INCHES UNLESS OTHERWISE SPECIFIED

ISSUE	ITEM	CHANGED FROM	DATE	CN. NO.	DRAFTS	CHECKER	ENG. APP.
0		PROD RELEASE	8 AUG 73		MAF	YFL	

REDUCE TO 3.500
BETWEEN TRAMMEL POINTS



A11053-1 ∅

REVISIONS

NO.	DATE	DESCRIPTION
1	8/25/72	INITIAL DESIGN
2	8/25/72	REVISED
3	8/25/72	REVISED
4	8/25/72	REVISED
5	8/25/72	REVISED
6	8/25/72	REVISED
7	8/25/72	REVISED
8	8/25/72	REVISED
9	8/25/72	REVISED
10	8/25/72	REVISED

STOCK SIZE		TMC (Canada) LIMITED OTTAWA ONTARIO	
MATERIAL		PC BOARD ETCHING	
WEIGHT PER PC.		MAJOR LOOP V.C.O.	
TYPE & TEMPER		MAFLYNN	
		DRAWN	ELEC. DES. APP.
HEAT TREAT. SPEC.		Y.F. LEE	MECH. DES. APP.
		CHECKED	FINAL APPROVAL
FINISH & SPEC. NO.		SHEET 2 OF 5	A11053-1 ∅

MMX () 3	110/71	A11053-5	25 AUG 72
MODEL	PROJECT NO.	ASSY. NO.	DATE
USED ON			

TOLERANCES		SCALE: 2:1
ALL OTHERS	DEC. DIM. ± .X*.05 FRAC. DIM. ± 1/64 ANGULAR DIM. ± 0° 30'	DRILL, PUNCH, COMMERCIAL STOCK SIZES AND MANUFACTURERS TOLERANCES ARE NOT INCLUDED.