

IF IT IS FOUND DESIRABLE TO CHANGE ANY TOLERANCE OR OTHER DETAIL SPECIFIED ON THIS DRAWING NOTIFY THE PURCHASER PROMPTLY.		DIMENSIONS IN INCHES UNLESS OTHERWISE SPECIFIED					
MAXIMUM ALLOWABLE TOLERANCES HAVE BEEN DETERMINED AND DEVIATIONS WILL BE CAUSE FOR REJECTION. REMOVE ALL BURRS AND SHARP EDGES.							
ISSUE	ITEM	CHANGED FROM	DATE	CN. NO.	DRAFTS	CHECKER	ENG. APP.
①		PROD RELEASE	8 AUG 73		MAF	YFL	

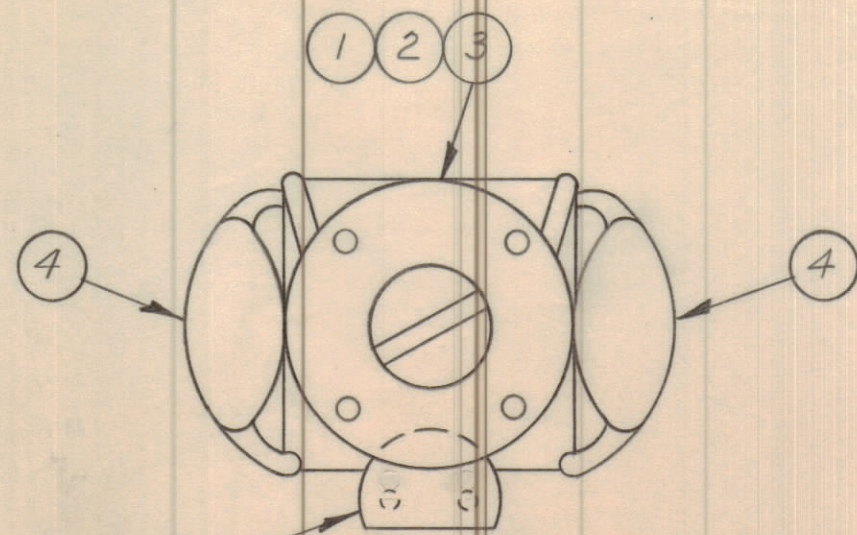


FIG. 2
SAME AS FIG. 1
EXCEPT ITEM 6 REVERSED

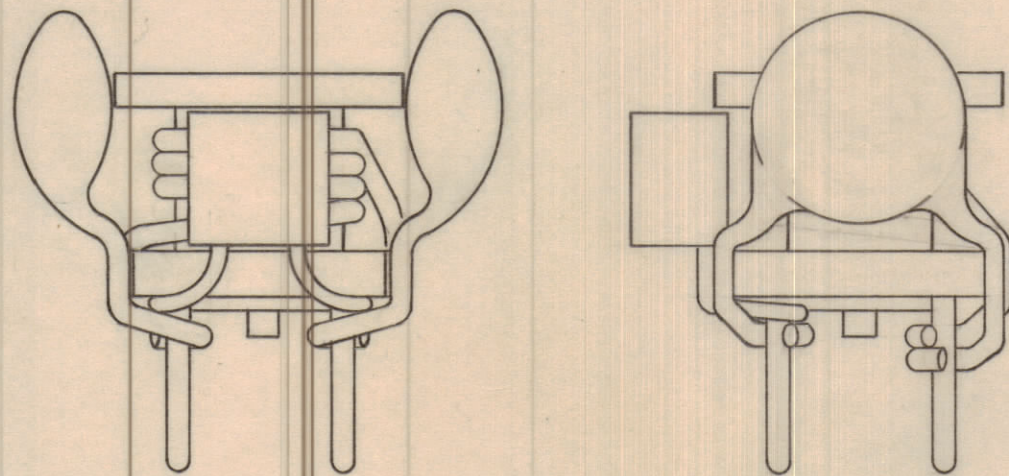
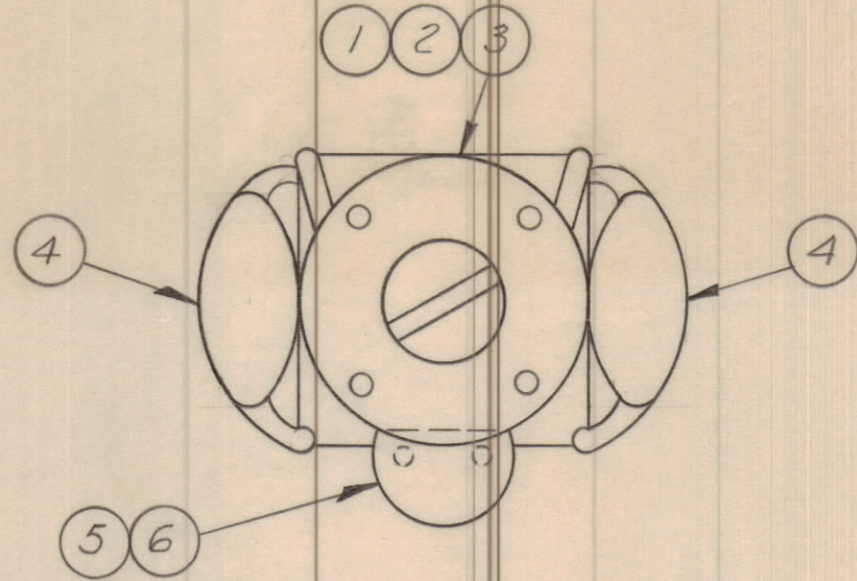


FIG. 1

1. ASSEMBLE & SOLDER AS SHOWN.

NOTE

NO. REQ'D	-3	-2	-1	ITEM	PART NO.	DESCRIPTION	USED ON	REMARKS
USE FIG.	2	1	1					
			1	1	CL10065-1	COIL ASSY		
		1		2	CL10065-2	COIL ASSY		
1				3	CL10065-3	COIL ASSY		
2	2	2		4	CC100-29	CAP. FXD CER.		
			1	5	MV2104	DIODE		
1	1			6	MV2105	DIODE		

A11070 ∅

TOLERANCES		SCALE: 4:1	DRILL, PUNCH, COMMERCIAL STOCK SIZES AND MANUFACTURERS TOLERANCES ARE NOT INCLUDED.
ALL OTHERS	DEC. DIM. ± .X = .05 FRAC. DIM. ± 1/64 ANGULAR DIM. ± 0° 30'		

MMX () 3	110/71	A11053-5	28 SEPT 72
MODEL	PROJECT NO.	ASSY. NO.	DATE

STOCK SIZE		TMC (Canada) LIMITED OTTAWA ONTARIO	
MATERIAL		VCO TUNING ASSEMBLY	
WEIGHT PER PC.		MA FLYNN	J. WITTEN
TYPE & TEMPER		DRAWN	ELEC. DES. APP. MECH. DES. APP.
HEAT TREAT. SPEC.		Y. FLEE	CHECKED
FINISH & SPEC. NO.		FINAL APPROVAL	
		A11070 ∅	