

IF IT IS FOUND DESIRABLE TO CHANGE ANY TOLERANCE OR OTHER DETAIL SPECIFIED ON THIS DRAWING NOTIFY THE PURCHASER PROMPTLY.

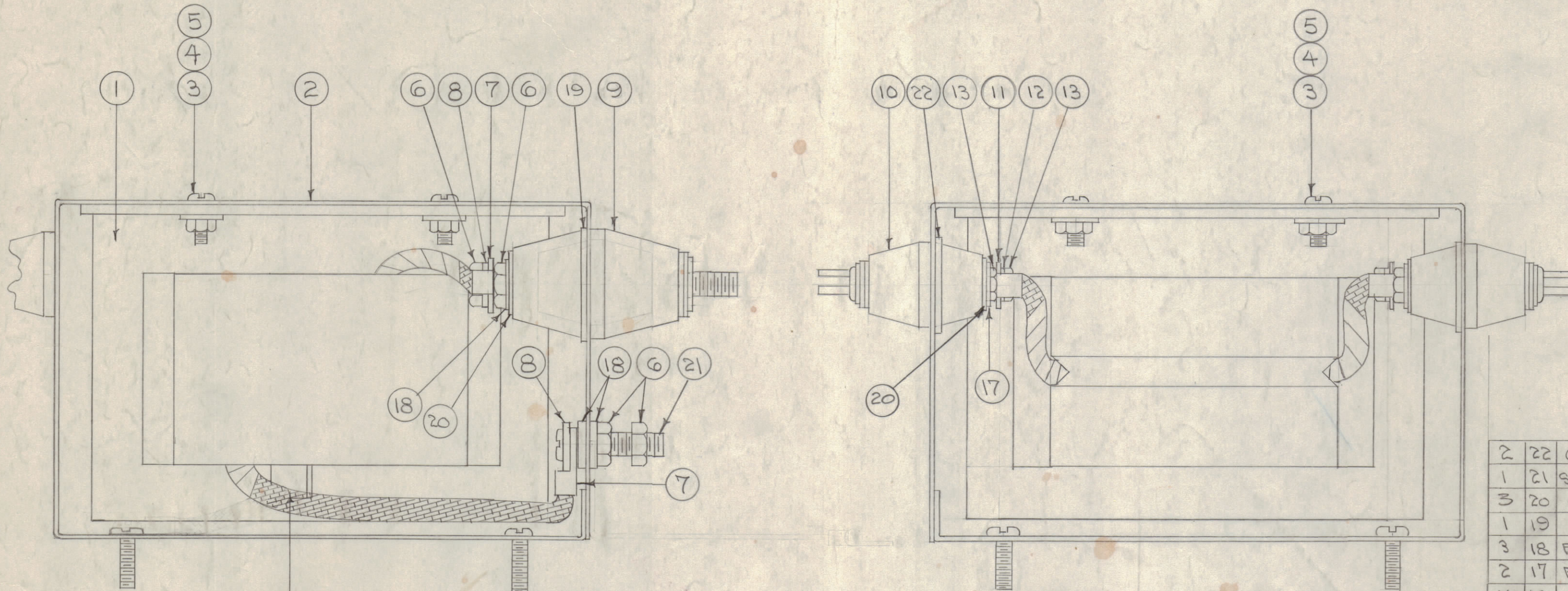
MAXIMUM ALLOWABLE TOLERANCES HAVE BEEN DETERMINED AND DEVIATIONS WILL BE CAUSE FOR REJECTION. REMOVE ALL BURRS AND SHARP EDGES

- STEP 1 - MAKE SOLDER CONNECTIONS AS SHOWN.
 2- SOLDER ONE END IN PLACE (END SHOWN IN LEFT HAND VIEW)
 3- POT USING ITEM 16.
 4- SOLDER OTHER END IN PLACE
 5- SMOOTH OFF ALL SEAMS.
 6- FINISH. (SEE BELOW)

NOTICE TO PERSONS RECEIVING THIS DRAWING

THE TECHNICAL MATERIEL CORPORATION claims proprietary right in the material disclosed hereon. This drawing is issued in confidence for engineering information only and may not be reproduced or used to manufacture anything shown hereon without permission from THE TECHNICAL MATERIEL CORPORATION to the user. This drawing is loaned for mutual assistance and is subject to recall at any time.

Property of:
 THE TECHNICAL MATERIEL CORPORATION
 MAMARONECK, NEW YORK



CUT OFF EXCESS AND SOLDER BRASS LEADS TO BRAID HERE. CONTINUE BRAID TO GROUND LUG AS SHOWN.

NOTE:
 DEGREASE
 S-114 ZINC CHROMATE PRIMER
 S-115 SMOOTH GRAY ENAMEL
 DO NOT PAINT HTG. STUDS - INSULATORS OR GROUND STRAP.

A-1202 B

REQ.	ITEM	PART NO.	DESCRIPTION	SYMBOL
2	22	GA-118	GASKET, CORK	
1	21	SCBS2520BC12	SCREW, MACHINE	
3	20	GA-114	GASKET, NEOPRENE	
1	19	GA-117	" , CORK	
3	18	FW25MSS	WASHER, FLAT	
2	17	FW16MSS	" , "	
X	16	GL-113	COMPOUND, RESIN	
-	15	DELETED	DELE. (WAS MS-664)	
X	14	BS-100	SOLDER, SOFT	
4	13	NTH02ABC12	NUT, HEX	
2	12	LWE16MRC	WASHER, LOCK	
2	11	TE-1A1-3	LUG	
2	10	NS-120	INSULATOR, MODIFIED	
1	9	NS-119	INSULATOR, FEED THRU	
2	8	LWE25MRC	WASHER, LOCK	
2	7	TE-1A1-4	LUG	
4	6	NTH2520BC14	NUT, HEX	
4	5	NTH0832BC12	NUT, HEX	
4	4	LWE08MRC	WASHER, LOCK	
4	3	SCBS0832BC8	SCREW, MACHINE	
1	2	A-1047	CASE & COVERS	
1	1	A-1201	XFMR/SUPPORT ASSY.	

REQ.	ITEM	PART NO.	DESCRIPTION	SYMBOL
THE TECHNICAL MATERIEL CORP.				
MAMARONECK, NEW YORK				
STOCK SIZE				
XFMR SUB CASE ASSY.				
MATERIAL WEIGHT PER PC. TR-138				
TYPE & TEMPER. CDD V6156 BB WDC				
DRAWN ELEC. DES. APP. MECH. DES. APP.				
HEAT TREAT. SPEC. JAWA RAB A.J.T.				
CHECKED FINAL APPROVAL				
SEE NOTE				
FINISH & SPEC. NO. A-1202 B				

B	1	ITEM 20 QUANTITY FROM 1 to 3 to include ones used or item 10	4/23/58	2	16		
A	1	ITEM 15, MS-664, COVERS DELETED. COVERS ARE NOW PART OF CAN DWG. A-1047	1/4/58	1	16	file	sho
ISSUE	ITEM	CHANGED FROM	DATE	CN. NO.	DRAFTS	CHECKER	ENG. APP.
TOLERANCES		SCALE:					
ALL OTHERS	DEC. DIM. ± FRAC. DIM. ± ANGULAR DIM. ±	DRILL, PUNCH, COMMERCIAL STOCK SIZES AND MANUFACTURERS TOLERANCES ARE NOT INCLUDED.					

1	TR-138			1-6-56
REQ PER UNIT	MODEL	PROJECT NO.	ASSY. NO.	DATE
USED ON				