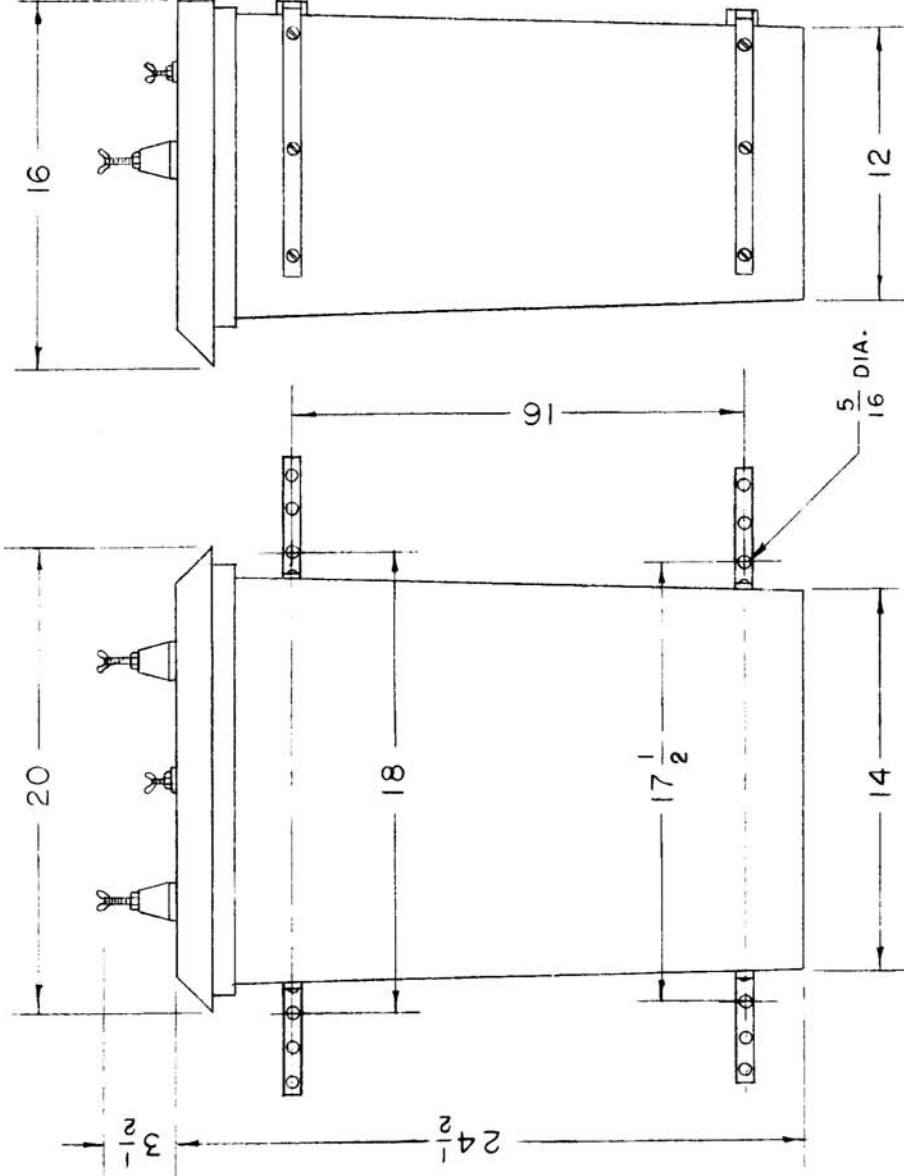


REQ. PER UNIT		USED ON	
1	MODEL	ASSY. NO.	DATE
	TER-3500		1-11-56

A-1220



ELECTRICAL SPECIFICATIONS
 RESISTANCES: TER - 3500 (500)
 NOMINALLY 600 ohms.
 DISSIPATION RATING: UP TO 1750 WATTS
 AT 30 MCS.

MECHANICAL SPECIFICATIONS
 CASE: FIBREGLASS REINFORCED
 PLASTIC.

REQ. ITEM	SYMBOL	DESCRIPTION
THE TECHNICAL MATERIEL CORP. MAMARONECK. NEW YORK		
MODEL TER--3500		
PART NO.		
STOCK SIZE		
MATERIAL		
HEAT TREAT. SPEC.		
TYPE & TEMPER.	DRAWN	
	CHECKED	
FINISH & SPEC. NO.		
ELEC. DES. APP.		
MECH. DES. APP.		

DATE CH. NO. DRAFTS CHECKER ENG. APP. 4A-1225

SCALE: MAXIMUM ALLOWABLE TOLERANCES HAVE BEEN DETERMINED AND ANY DEVIATIONS WILL BE CAUSE FOR REJECTION. REMOVE ALL BURRS AND SHARP EDGES

ISSUE ITEM CHANGED FROM

131-11-56

[Signature]

FINAL APPROVAL

A-1220