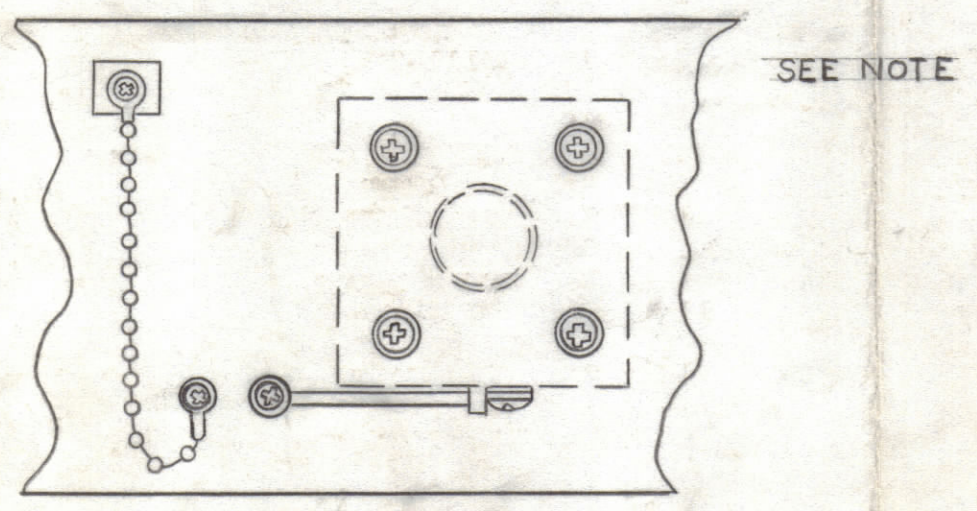
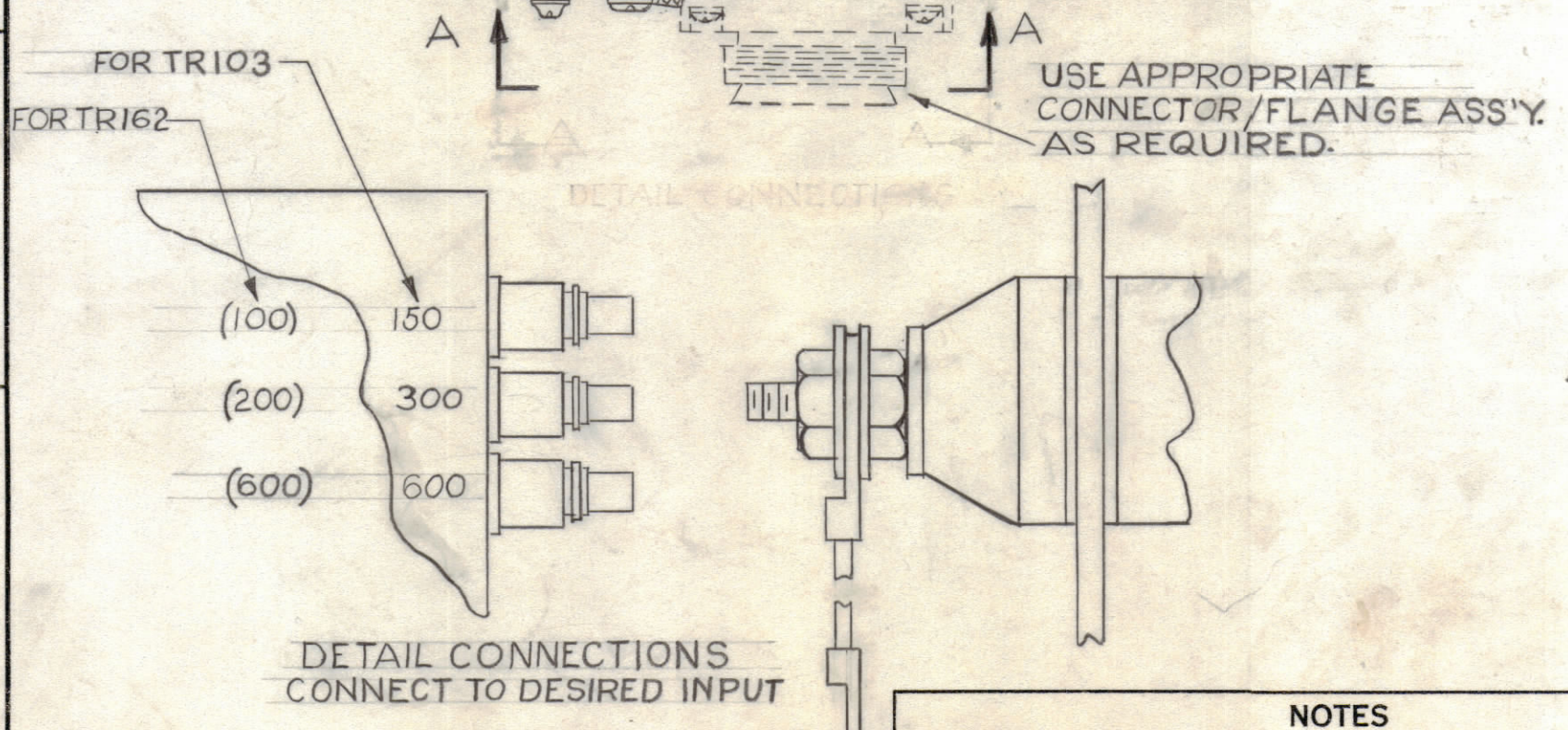
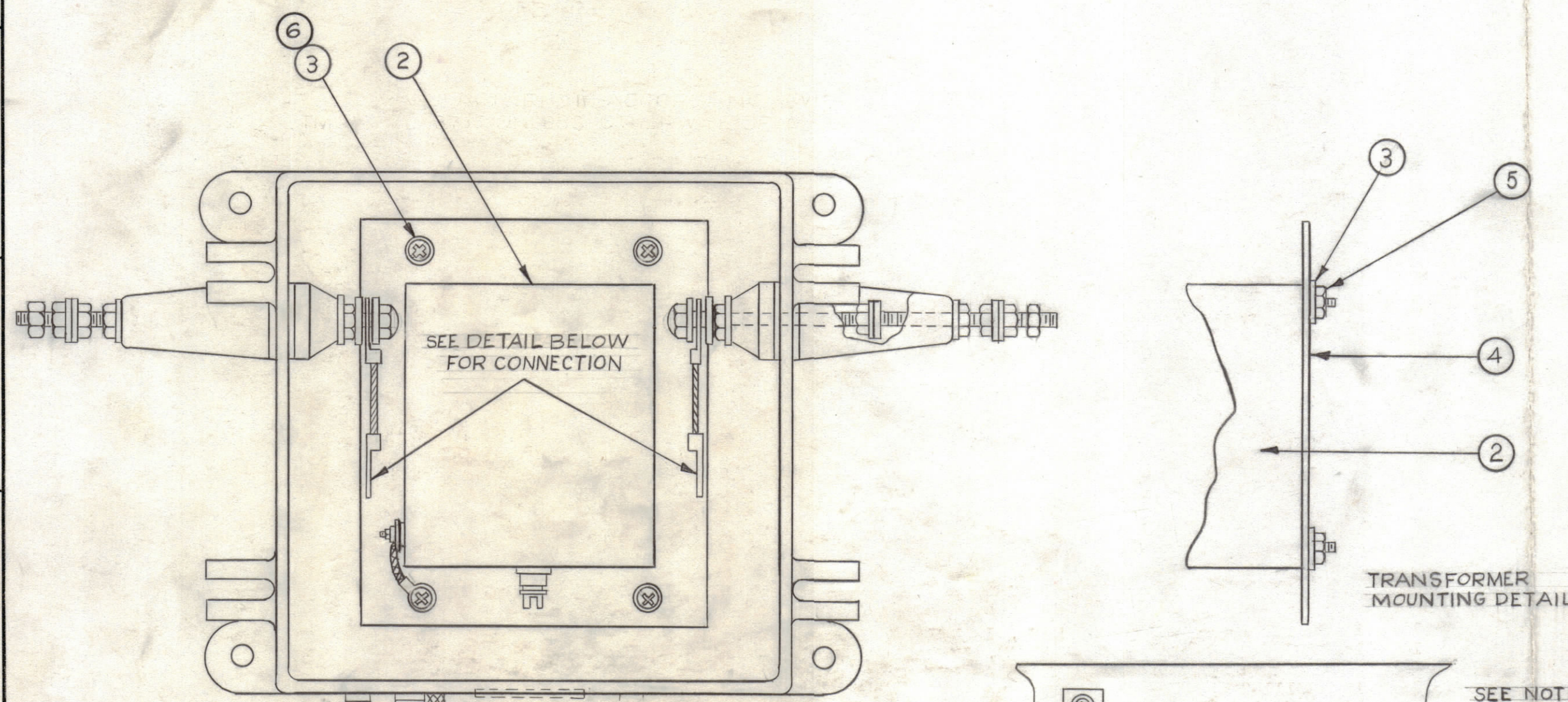


REVISIONS						
ZONE	SYM	DESCRIPTION	DATE	E.M.N. NO.	DRAFT	CHKD
#	E	COMPLETELY REVISED & REDRAWN	4/22/64	11266	A.M.	
	F	TMC PART NO A1222-3 ADDED	8/19/64	14618		
	G	ITEM#7-CHG LDI191 TO LD 2451	11/15/76	21485		

TMC PART NO.	EQUIPMENT	ITEM 2	ITEM 7
A1222-1	TRC-500-50U/600B	TR 162	LD 2451
A1222-2	TRC-500-70U/600B	TR 103	LD 259
A1222-3	TRC-500-50U/300B	TR 185	LD 1960

NOTE:
ITEMS 9 THRU 14 SUPPLIED AS LOOSE ITEMS.



REQ'D.	ITEM	PART NUMBER	DESCRIPTION	SYMBOL
1	15	NP412	PLATE, IDENTIFICATION	
1	14	ID297	DIAGRAM, INSTALLATION	
4	13	SCH3716SN16	BOLT, MACHINE	
8	12	SC111-2	BOLT, LAG	
4	11	NTH3716SN20	NUT, PLAIN, HEX	
4	10	MS619	BRACKET, MOUNTING	
4	9	LWS37MRN	WASHER, LOCK, SPLIT	
4	8	SFB0256SN4	SCREW, TAPPING, THREAD CUTTING	
1	7	SEE CHART	DIAGRAM, SCHEMATIC	
4	6	SCBP0832BN6	SCREW, MACHINE	
4	5	NTH0832BN10	NUT, PLAIN, HEX	
1	4	MS795	PLATE, MOUNTING, TRANSFORMER	
8	3	LWE08MRN	WASHER, LOCK, EXTERNAL	
1	2	SEE CHART	TRANSFORMER, RF, FIXED	
1	1	AX501	CASE/COVER ASSEMBLY	

LIST OF MATERIAL			
MATERIAL	---	THE TECHNICAL MATERIEL CORP. MAMARONECK, NEW YORK	
FINISH	---	TITLE FINAL ASSEMBLY TRC-500	
UNLESS OTHERWISE SPECIFIED DIMENSIONS ARE IN INCHES AND INCLUDE CHEMICALLY APPLIED OR PLATED FINISHES	SCALE ---	DRAWN A. MARINO	DATE 4-22-64
DECIMALS .X ± .05 .XX ± .01 .XXX ± .005	TOLERANCES ---	CHECKED @	DATE 4-24-64
FRACTIONS ± 1/64 ANGLES ± 0° 30'		ELECT. DES. ---	DATE 4/24/64
		MECH. DES. ---	DATE ---
			DATE ---

TRC 500		
Q'TY./UNIT	MODEL USED ON	ASS'Y. NO.
SCALE ---	CODE A	

NOTES

THE CONTENTS OF THIS DRAWING ARE THE EXCLUSIVE PROPERTY OF THE TECHNICAL MATERIEL CORP. ITS UNAUTHORIZED USE OR REPRODUCTION IN WHOLE OR IN PART IS STRICTLY FORBIDDEN.

A1222 F