

REQ. PER UNIT	MODEL	USED ON ASSY. NO.	DATE
1	RTF	A-123A	2/6/56

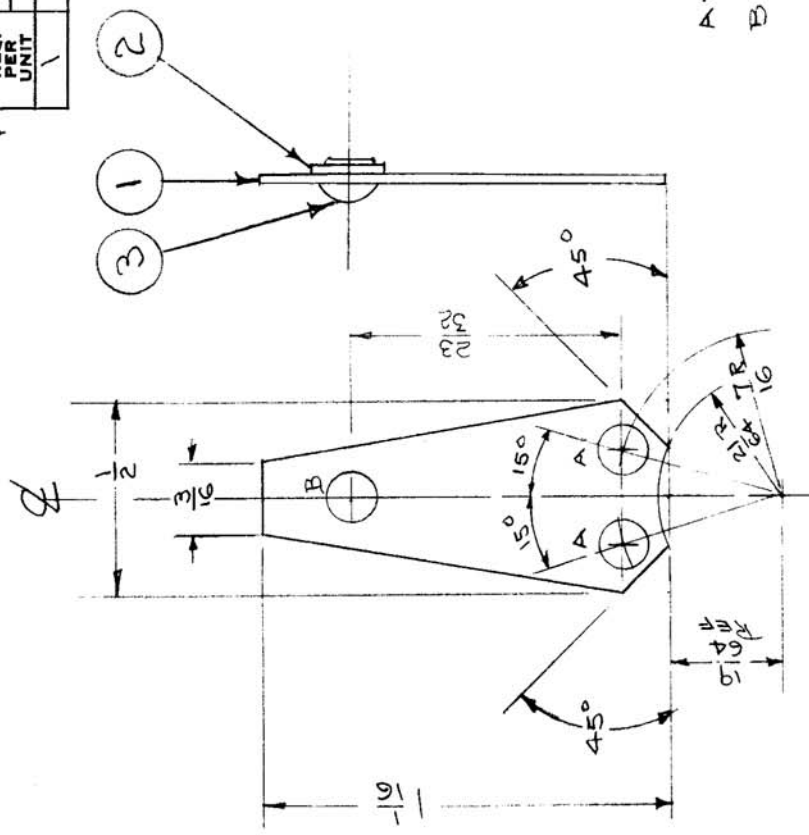
A-123A

B

BLANK SIZE
1 3/8 x 1/2

A = 5/32 (156) D. 2 HOLES
B = #29 (136) D. 1 "

NOTE:
USED ONLY ON RTF SERIAL NOS.
100 - 114 INCLUSIVE



REQ. ITEM	DESCRIPTION	SYMBOL
1 3	ANASSADA-3 RIVET	
1 2	FWOGLRC WASHER, FLAT	
1 1	MS-884 DETENT ARM (NO DRAWING)	
THE TECHNICAL MATERIEL CORP. MAMARONECK, NEW YORK		
DETENT ARM ASSY. POW/AMPL. RTF		
PART NO. .0 GA STOCK SIZE		
MATERIAL ALUMINUM		
5052-H32 TYPE & TEMPER HEAT TREAT. SPEC.		
S404 IRIDITE FINISH & SPEC. NO.		
DATE	CH. NO.	DRAFTS
12-7-59	1001	EMN
3/20/56	1	W
DATE	CH. NO.	DRAFTS
3/20/56	1	W
DATE	CH. NO.	DRAFTS
3/20/56	1	W
SCALE: MAXIMUM ALLOWABLE TOLERANCES HAVE BEEN DETERMINED AND ANY DEVIATIONS WILL BE CAUSE FOR REJECTION. REMOVE ALL BURRS AND SHARP EDGES		
TOLERANCES DEC. DIM. ± FRAC. DIM. ± 1/64 ANGULAR DIM. ± 1°		
DRAWN: JAD CHECKED: WDC DATE: 2/6/56 FINAL APPROVAL: WDC		
ELEC. DES. APP. MECH. DES. APP.		
A-123A B		