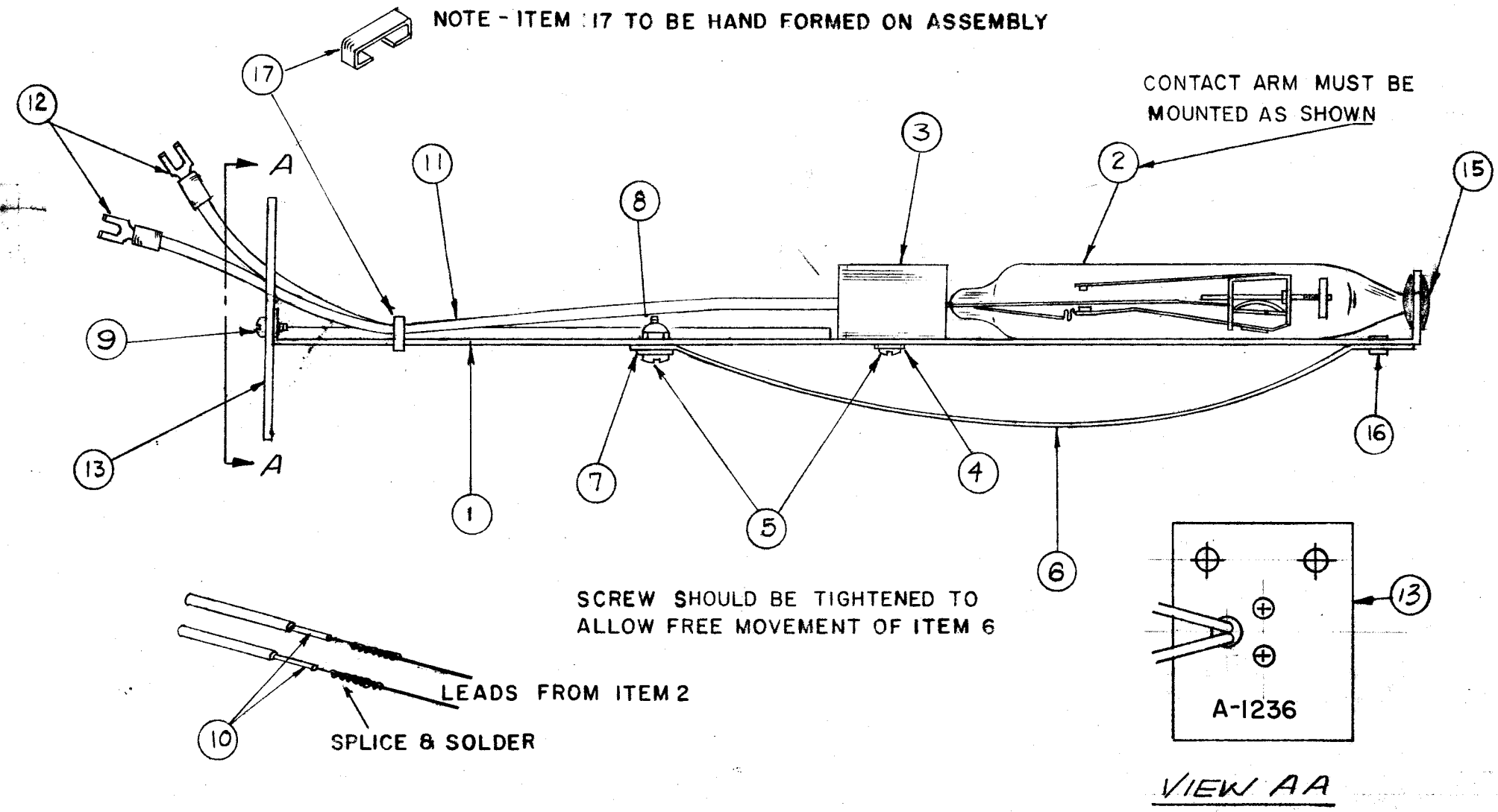


G  
A-1236

**NOTICE TO PERSONS RECEIVING THIS DRAWING**  
 THE TECHNICAL MATERIEL CORPORATION claims  
 copyright in the material herein and  
 the drawing is made in confidence for engineering  
 purposes and it may not be reproduced or used  
 in any way without the written consent of  
 THE TECHNICAL MATERIEL CORPORATION.  
 Property of:  
**THE TECHNICAL MATERIEL CORPORATION**  
 MAMARONECK, NEW YORK



REQ. ITEM	PART NO.	DESCRIPTION	SYMBOL
1	17	MS-783-2-8-A	STRAP, CLAMP
1	16	EY-100-1	EYELET
1	15	EY-102-1	GROMMET
X	14	BS-100	SOLDER, SOFT
1	13	MS-903	PLATE, FACE
2	12	TE-120-2	LUG, TERMINAL
26'	11	PX-100-1,106	INSULATION, SLEEVING
19'	10	MWC 22(7)UC	CABLE, STRANDED
2	9	SFB0256SN4	SCREW THREAD CUTTING
1	8	SM-127-S-440	NUT, HEX
1	7	FW04HBN	WASHER, FLAT
1	6	MS-900	STRAP, SPRING
2	5	SCBP0440BN5	SCREW, MACHINE
1	4	LWE04MRN	LOCKWASHER
1	3	PX 356	SUPPORT, THERMOSTAT
1	2	SS-103-C-70	SWITCH, THERMOSTATIC
1	1	MS-1026	BRACKET, THERMOSTAT

THE TECHNICAL MATERIEL CORP. MAMARONECK, NEW YORK			
STOCK SIZE			
MATERIAL			
TYPE & TEMPER. HEAT TREAT. SPEC.			
FINISH & SPEC. '0.			
DRAWN	CHECKED	FINAL APPROVAL	
sc.	2-15-57	A-1236	
ELEC. DES. APP.	MECH. DES. APP.		

ISSUE	ITEM	CHANGED FROM	DATE	CH. NO.	DRAFTS	CHECKER	ENG. APP.
G		ADD VIEW AA	1/4/74	21117	9E	EL	EL
F		IT 9 WAS SFB0256SN4	9.20.66	16857	WFO	WFO	WFO
E	2	ALL SCREWS WERE SLOTTED	7-3-62	6470	WAF.	WAF.	WAF.
E	1	ALL HARDWARE WAS CADMIUM					
D	1	Redrawn & Revised	2-15-57	1	sc.	sc.	sc.

REQ. PER UNIT	MODEL	PROJECT NO.	ASSY. NO.	USED ON
1	VOX-3,4,5,6			6-22-62
1	CMD-2			3-10-60
1	CMD-1			3-10-60
1	RTF-2	MAS/OSC		11-10-58
1	RTF			2-15-57

**TOLERANCES**  
 DEC. DIM. ±  
 FRAC. DIM. ±  
 ANGULAR DIM. ±

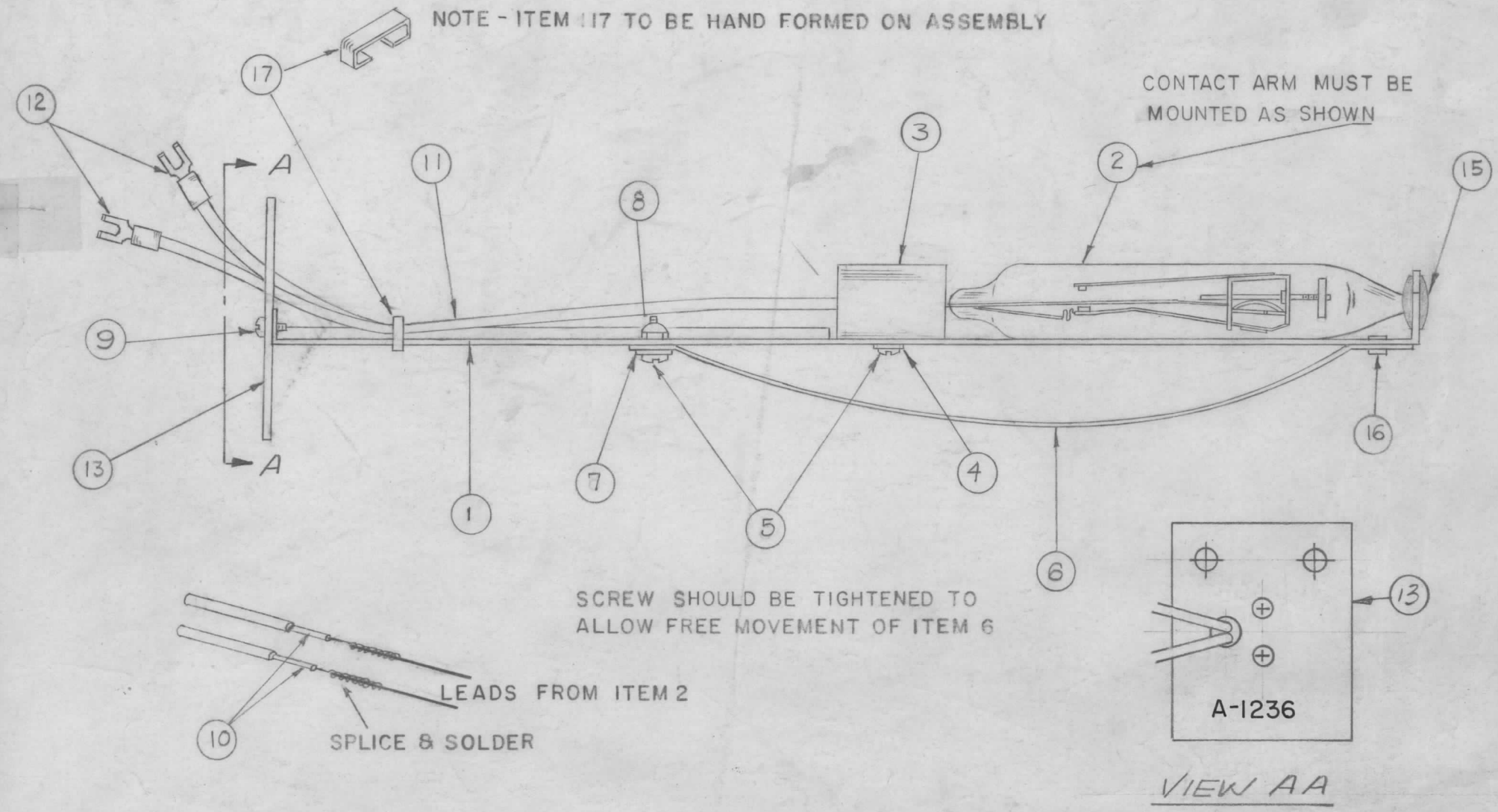
**SCALE:**  
 MAXIMUM ALLOWABLE TOLERANCES HAVE BEEN DETERMINED AND ANY DEVIATIONS WILL BE CAUSE FOR REJECTION.  
 REMOVE ALL BURRS AND SHARP EDGES

A-1236 G

**NOTICE TO PERSONS RECEIVING THIS DRAWING**

THE TECHNICAL MATERIEL CORPORATION claims proprietary right in the material disclosed hereon. This drawing is issued in confidence for engineering information only and may not be reproduced or used to manufacture anything shown hereon without permission from THE TECHNICAL MATERIEL CORPORATION to the user. This drawing is loaned for mutual assistance and is subject to recall at any time.

Property of:  
**THE TECHNICAL MATERIEL CORPORATION**  
 MAMARONECK, NEW YORK



1	17	MS-783-2-8-A	STRAP, CLAMP
1	16	EY-100-1	EYELET
1	15	EY-102-1	GROMMET
X	14	BS-100	SOLDER, SOFT
1	13	MS-903	PLATE, FACE
2	12	TE-120-2	LUG, TERMINAL
26"	11	PX-100-1,106	INSULATION, SLEEVING
19"	10	MWC 22(7)00	CABLE, STRANDED
2	9	SFB0256SN4	SCREW THREAD CUTTING
1	8	SM-127-S-440	NUT, HEX
1	7	FW04HBN	WASHER, FLAT
1	6	MS-900	STRAP, SPRING
2	5	SCBP0440BN5	SCREW, MACHINE
1	4	LWE04MRN	LOCKWASHER
1	3	PX 356	SUPPORT, THERMOSTAT
1	2	SS-103-C-70	SWITCH, THERMOSTATIC
1	1	MS-1026	BRACKET, THERMOSTAT

REQ. ITEM	PART NO.	DESCRIPTION	SYMBOL
<b>THE TECHNICAL MATERIEL CORP.</b> MAMARONECK, NEW YORK			
STOCK SIZE			
OVEN THERMOSTAT ASSEMBLY			
MATERIAL			
TYPE & TEMPER	HEAT TREAT. SPEC.	DRAWN	CHECKED
FINISH & SPEC. N.O.	ELEC. DES. APP.	MECH. DES. APP.	

G	ADD VIEW AA	1/4/74	21117	9E	ef	ef	
F	IT 9 WAS SFBP0256SN4	9.20.66	16857	WFO	ef	ef	
E	2 ALL SCREWS WERE SLOTTED	7-3-62	6470	WAF.	file	file	
D	1 Redrawn & Revised	2-15-57	1	sc.	16	file	
ISSUE	ITEM	CHANGED FROM	DATE	CH. NO.	DRAFTS	CHECKER	ENG. APP.
TOLERANCES		SCALE:					
DEC. DIM. ±		MAXIMUM ALLOWABLE TOLERANCES HAVE BEEN DETERMINED AND ANY DEVIATIONS WILL BE CAUSE FOR REJECTION.					
FRAC. DIM. ±		REMOVE ALL BURRS AND SHARP EDGES					
ANGULAR DIM. ±							

1	VOX-3,4,5,6			6-22-62
1	CMO-2			3-10-60
1	CMO-1			3-10-60
1	RTF-2	MAS/OSC		11-10-58
1	pmo 1,2 vox 1,2 RTF			2-15-57
REQ. PER UNIT	MODEL	PROJECT NO.	ASS'Y. NO.	DATE
USED ON				

A-1236