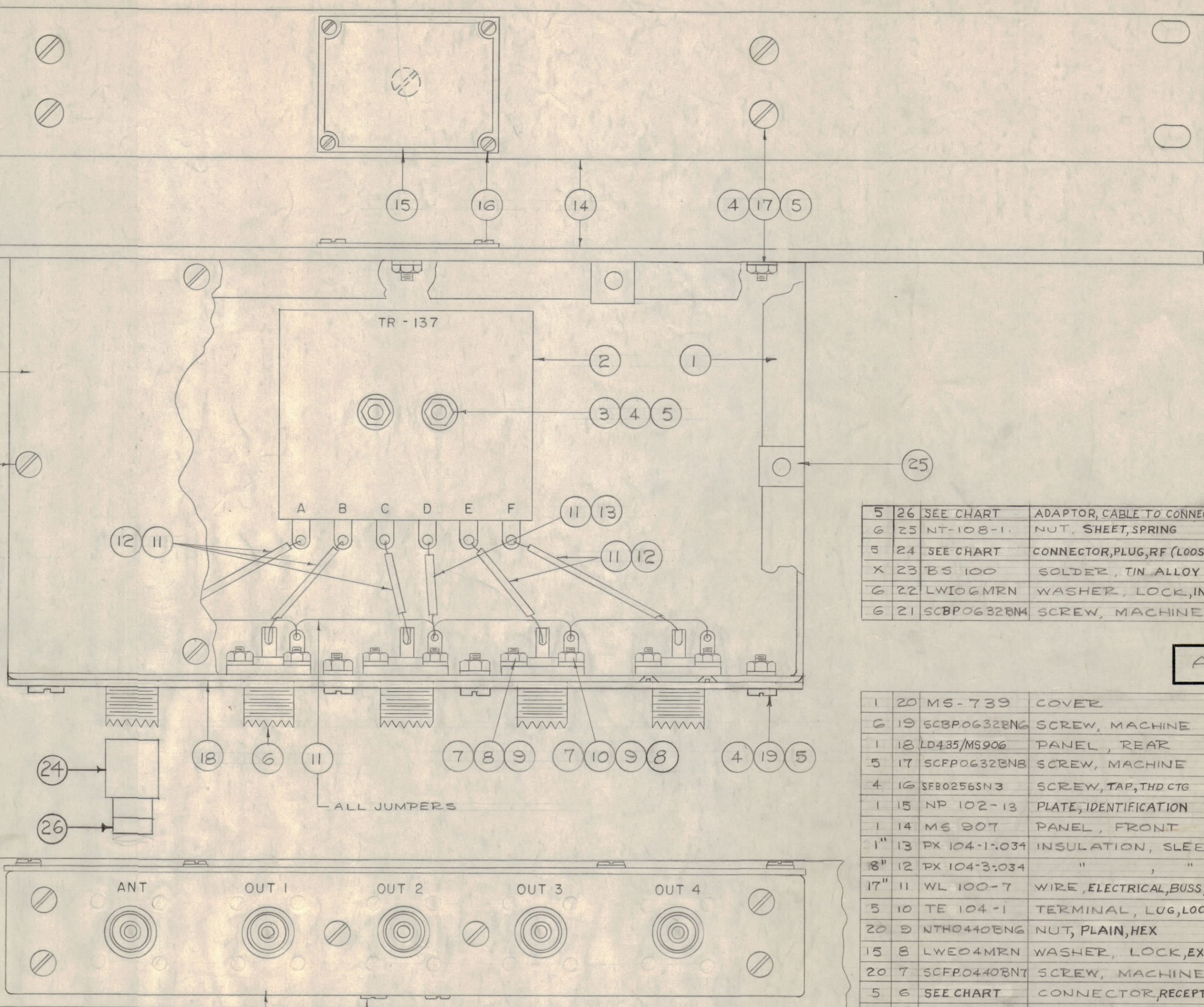


IF IT IS FOUND DESIRABLE TO CHANGE ANY TOLERANCE OR OTHER DETAIL SPECIFIED ON THIS DRAWING NOTIFY THE PURCHASER PROMPTLY.
 MAXIMUM ALLOWABLE TOLERANCES HAVE BEEN DETERMINED AND DEVIATIONS WILL BE CAUSE FOR REJECTION.
 REMOVE ALL BURRS AND SHARP EDGES

TMC ASSY. NO.	MODEL NO.	ITEM 1	ITEM 6	ITEM 24	ITEM 26
A 1253-1	HFDI/QDS	MS912-1	JJ 187	PL 149	—
A 1253-2	HFDI/QDM	MS912-2	JJ 307	PL 223	—
A 1253-3	HFDI/UHF	MS912-1	SO239A	PL 259A ^{TER}	UG 176*/U
A 1253-4	HFDI/N	MS912-1	JJ 222	UG 94*/U	—
A 1253-5	HFDI/C	MS912-1	UG 568*/U	UG 943*/U	—
A 1253-6	HFDI/BNC	MS912-2	UG 447*/U	UG 260*/U	—

ISSUE	ITEM	CHANGED FROM	DATE	CN. NO.	DRAFTS	CHECKER	ENG. APP.
C	1	ON CHART TMC ASSY NO. ITEM 6 OF A 1253-6 WAS UG 290*/U	3-4-66	15908	G.D.L.	<i>[Signature]</i>	
B	1	UPDATED DWG.	3-7-64	10951	A.M.	<i>[Signature]</i>	
A	9	ALL HARDWARE WAS CADMIUM					
	8	ITEM (2) WAS A-1244					
	7	ITEM (6) WAS NTH0632BC10	9/	5512	L.I.	<i>[Signature]</i>	16
	6	ITEM (2) WAS PX-104-1-022	5/				
	5	ITEM (3) WAS PX-104-1-022					
	4	ITEM (6) WAS SC-110-1	6/				
	3	ITEM (24) WAS PL-259					
	2	ITEM (26) ADDED					
	1	ITEM (6) WAS SO-239					

TOLERANCES		SCALE:	
ALL OTHERS	DEC. DIM. ± FRAC. DIM. ± ANGULAR DIM. ±	DRILL, PUNCH, COMMERCIAL STOCK SIZES AND MANUFACTURERS TOLERANCES ARE NOT INCLUDED.	



5	26	SEE CHART	ADAPTOR, CABLE TO CONNECTOR (LOOSE ITEM)
6	25	NT-108-1.	NUT, SHEET, SPRING
5	24	SEE CHART	CONNECTOR, PLUG, RF (LOOSE ITEM)
X	23	BS 100	SOLDER, TIN ALLOY
6	22	LW106MRN	WASHER, LOCK, INTERNAL
6	21	SCBP0632BN4	SCREW, MACHINE

A-1253 C

1	20	MS-739	COVER
6	19	SCBP0632BN6	SCREW, MACHINE
1	18	LD435/MS906	PANEL, REAR
5	17	SCFP0632BN8	SCREW, MACHINE
4	16	SF80256SN3	SCREW, TAP, THD CTG
1	15	NP 102-13	PLATE, IDENTIFICATION
1	14	MS 907	PANEL, FRONT
1"	13	PX 104-1-034	INSULATION, SLEEVING, S Z 20
8"	12	PX 104-3-034	" " " " S Z 20
17"	11	WL 100-7	WIRE, ELECTRICAL, BUSS, S Z 22
5	10	TE 104-1	TERMINAL, LUG, LOCKING, NO. 4
20	9	NTH0440ENG	NUT, PLAIN, HEX
15	8	LWEO4MRN	WASHER, LOCK, EXTERNAL
20	7	SCFP0440BNT	SCREW, MACHINE
5	6	SEE CHART	CONNECTOR, RECEPTACLE, RF
13	5	NTH0632BN8	NUT, PLAIN, HEX
13	4	LWEO6MRN	WASHER, LOCK, EXTERNAL
2	3	SCBP0632BN20	SCREW, MACHINE
1	2	TR 137	XFMR, RF, FIXED
1	1	SEE CHART	CHASSIS

REQ. ITEM	PART NO.	DESCRIPTION	SYMBOL
THE TECHNICAL MATERIEL CORP. MAMARONECK, NEW YORK			
STOCK SIZE			
FINAL ASSEMBLY			
MATERIAL		WEIGHT PER PC.	
HFD-1			
TYPE & TEMPER		DRAWN	
HEAT TREAT. SPEC.		ELEC. DES. APP.	
FINISH & SPEC. NO.		MECH. DES. APP.	
		CHECKED	
		FINAL APPROVAL	
		A-1253 C	

REQ PER UNIT	MODEL	PROJECT NO.	ASSY. NO.	DATE
1	HFD-1			3-16-56
USED ON				