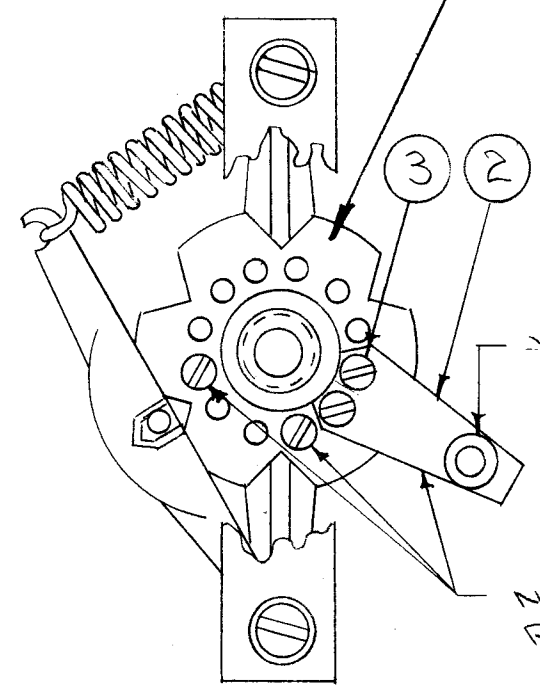
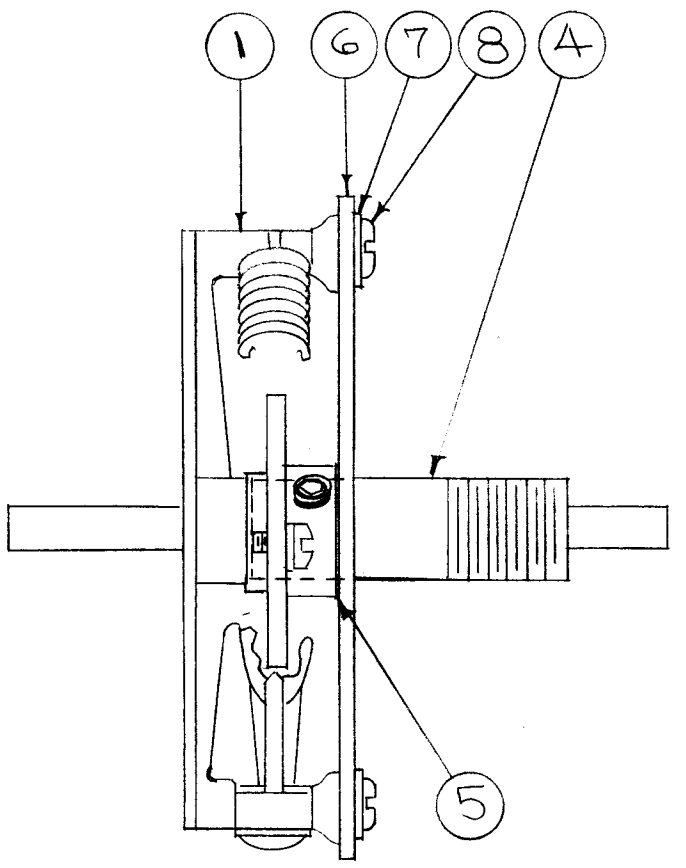


A-1273



NOTE
 MODIFY INDEX AS PER
 TMC DRAWING ~~NOTICE TO PERSONS RECEIVING THIS DRAWING~~

THE TECHNICAL MATERIEL CORPORATION claims proprietary right in the material disclosed hereon. This drawing is issued in confidence for engineering information only and may not be reproduced or used to manufacture anything shown hereon without permission from THE TECHNICAL MATERIEL CORPORATION to the user. This drawing is loaned for mutual assistance and is subject to recall at any time.

Property of:
 THE TECHNICAL MATERIEL CORPORATION
 MAMARONECK, NEW YORK

WASHER - CONTACT IS ON OTHER SIDE OF ARM.

NOTE POSITION OF STOP SCREWS RELATIVE TO CONTACT ARM.

OBSOLETE

NOTE
 USED ONLY ON RTF SERIAL NOS. 100-114 INCLUSIVE.

2	8	SCBS0832BC6	SCREW, MACHINE	
2	7	LWE08MRC	WASHER, LOCK	
1	6	MS-886	BRACKET, DETENT	
1	5	LWI43MRC	WASHER, LOCK	
1	4	PM-400	SHAFT	
2	3	SCPS0632BC4	SCREW, MACHINE	
1	2	A-1234	DETENT ARM ASSY.	
1	1	SW-180-B-2.875	SWITCH DETENT	

REQ. ITEM	PART NO.	DESCRIPTION	SYMBOL
THE TECHNICAL MATERIEL CORP. MAMARONECK, NEW YORK			
STOCK SIZE			
DETENT ASSY.			
MATERIAL			
		P/A	GPT-750
		CDD-226-50	
TYPE & TEMPER	HEAT TREAT. SPEC.	DRAWN	CHECKED
			FINAL APPROVAL
			A-1273
FINISH & SPEC. NO.		ELEC. DES. APP.	MECH. DES. APP.

ISSUE	ITEM	CHANGED FROM	DATE	CH. NO.	DRAFTS	CHECKER	ENG. APP.
TOLERANCES			SCALE:				
DEC. DIM. ±			MAXIMUM ALLOWABLE TOLERANCES HAVE BEEN DETERMINED AND ANY DEVIATIONS WILL BE CAUSE FOR REJECTION. REMOVE ALL BURRS AND SHARP EDGES				
FRAC. DIM. ±							
ANGULAR DIM. ±							

1	RTF			2-26-56
REQ. PER UNIT	MODEL	PROJECT NO.	ASS'Y. NO.	DATE
USED ON				