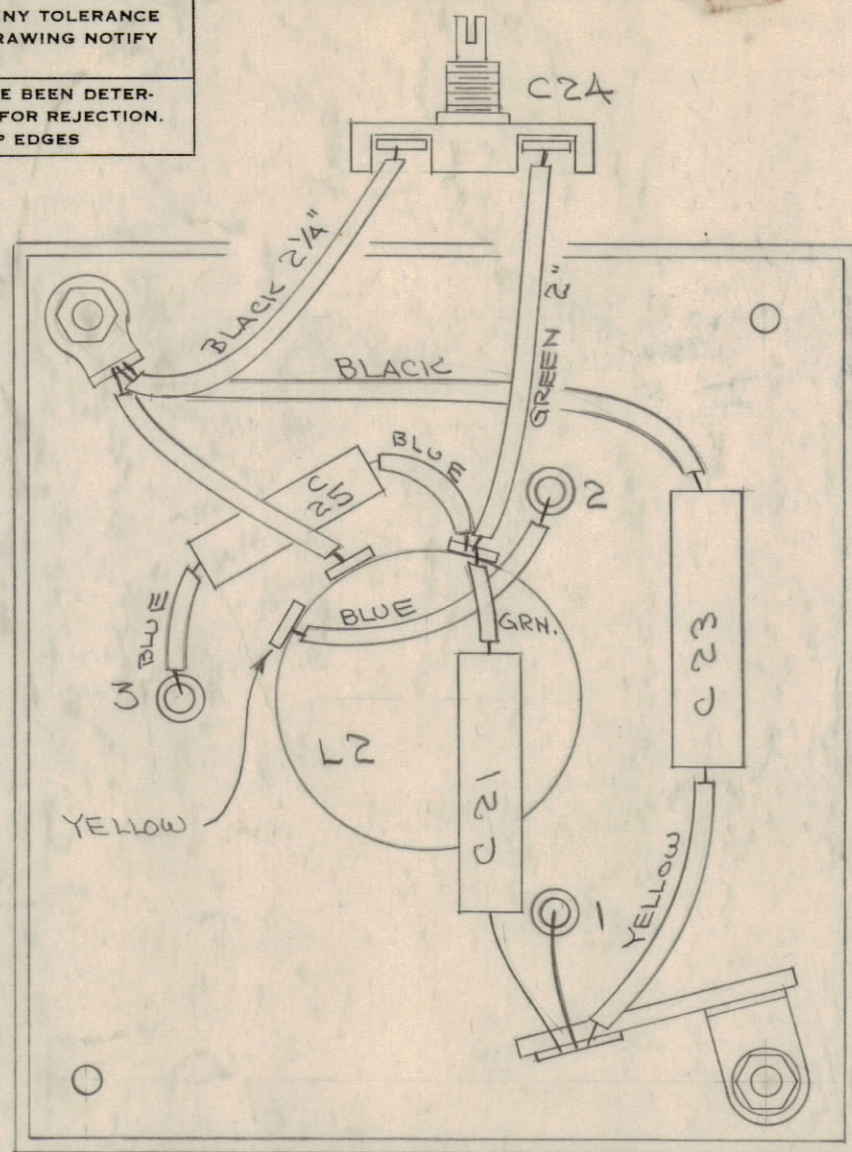
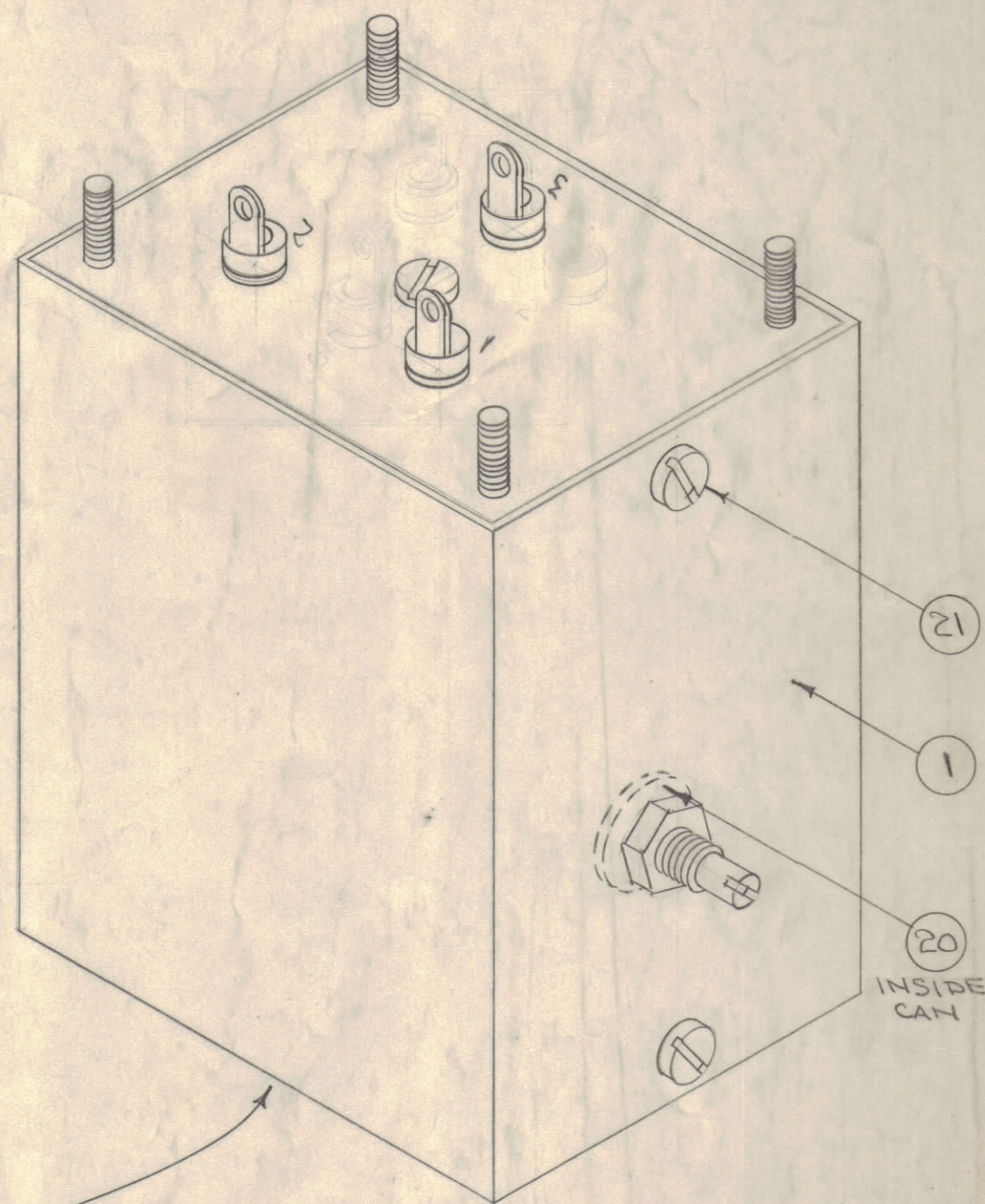


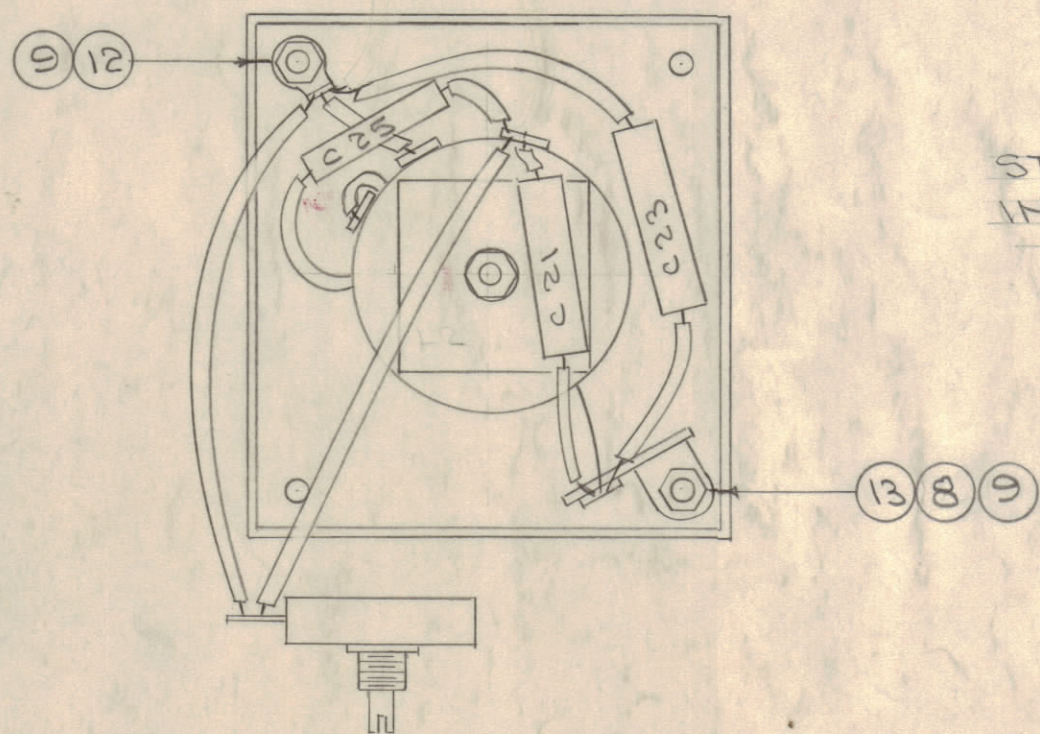
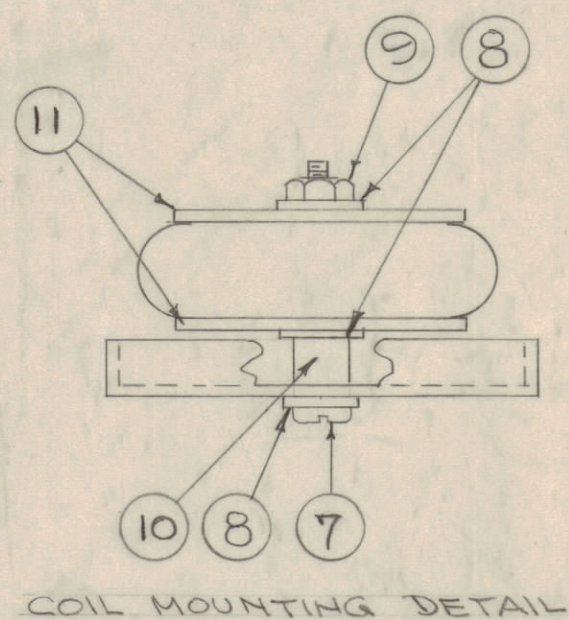
IF IT IS FOUND DESIRABLE TO CHANGE ANY TOLERANCE OR OTHER DETAIL SPECIFIED ON THIS DRAWING NOTIFY THE PURCHASER PROMPTLY.
 MAXIMUM ALLOWABLE TOLERANCES HAVE BEEN DETERMINED AND DEVIATIONS WILL BE CAUSE FOR REJECTION.
 REMOVE ALL BURRS AND SHARP EDGES



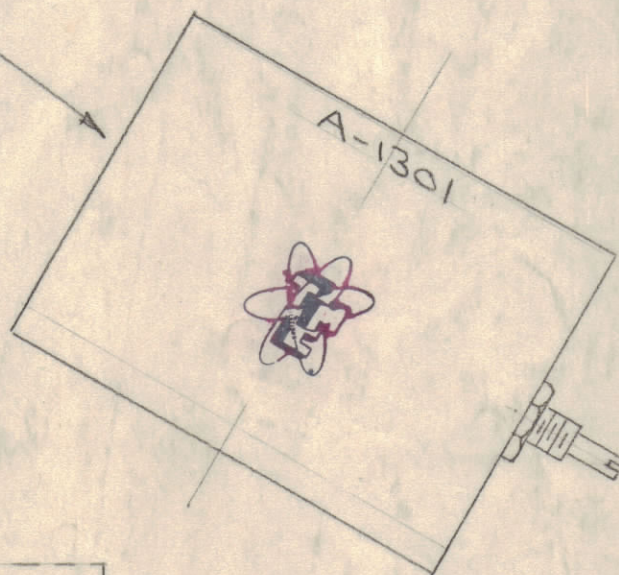
ABOVE ONLY TO SHOW CONNECTIONS. SEE BELOW FOR PHYSICAL LAYOUT AND SCHEMATIC.



- PROCEDURE**
- 1- ASSEMBLE COMPONENTS IN TERMINAL END AS SHOWN AT LEFT.
 - 2- ATTACH TERMINAL END AND C 24 TO CAN.
 - 3- TEST AS PER SPEC. S-307.
 - 4- ATTACH OTHER END TO CAN.
 - 5- FINISH -
 DEGREASE - S115 SMOOTH GRAY ENAMEL (EXCEPT STUDS, TERMINALS & CAPACITOR ADJUSTMENT KNOB.



STAMP THIS END OF CAN - THE INSIGNIA & A-1301, AFTER PAINTING.

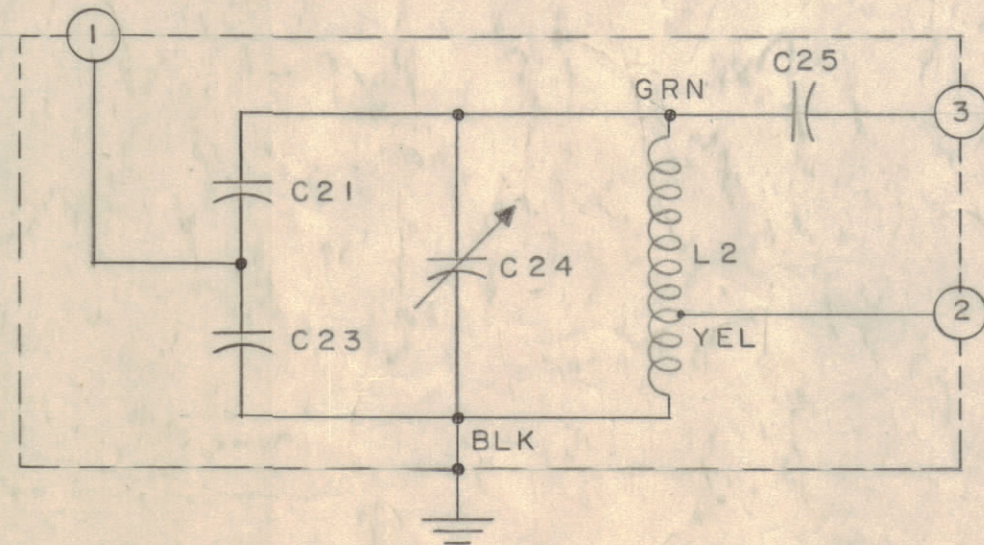


4	21	SFB0440SC4	SCREW, THD. CUTTING
---	----	------------	---------------------

A-1301 D

1	20	LWE12 MRC	WASHER, LOCK	
X	19	BS-100	SOLDER, SOFT	
X	18	PX-104-1-.022	INSULATION, SLEEVING	BLK.
X	17	" -2-.022	" , "	YEL
X	16	" -4-.022	" , "	GRN
X	15	" -6-.022	" , "	BLU E
X	14	WL-100 -7	WIRE, BUSS BAR 22 GA	
1	13	TM-117-1	TERMINAL STRIP	
1	12	TE-104-2	TERMINAL, LOCKING	
2	11	PX-341	INSULATION, TOROID MTG.	
1	10	TE-117-1	STANDOFF	
3	9	NTH0632BC8	NUT, HEX	
5	8	LWE06 MRC	WASHER, LOCK	
1	7	SCBS0632BC20	SCREW, MACHINE	
1	6	A-1295	COIL ASSY., 17 KC OSC	L2
1	5	CN20E102J	CAPACITOR, FIXED	C25
1	4	CN30E212G	" , "	C23
1	3	CY100-304	" , VAR.	C24
1	2	CM30E332G	" , FIXED	C21
1	1	BX-147	CAN	

REQ. ITEM	PART NO.	DESCRIPTION	SYMBOL
THE TECHNICAL MATERIEL CORP. MAMARONECK, NEW YORK			
STOCK SIZE			
FINAL ASSY., 17 KC OSC., Z3, GSB-1			
MATERIAL		WEIGHT PER PC.	
TYPE & TEMPER		CDP 9/25/56	
HEAT TREAT. SPEC.		DRAWN	ELEC. DES. APP. MECH. DES. APP.
SEE ABOVE		APR 1 1969	
FINISH & SPEC. NO.		CHECKED	FINAL APPROVAL
		A-1301 D	



D	2	SCB30632BC20 WAS SCB30632BC-18	2-10-57	5	SC.	16	
C	1	SFB0440SC4 WAS SC-110-5		4			
C	1	COMPLETE REVISION	3/21/60	3	CDP	P.L.X. A.J.T.	
ISSUE	ITEM	CHANGED FROM	DATE	CN. NO.	DRAFTS	CHECKER	ENG. APP.
TOLERANCES				SCALE:			
ALL OTHERS	DEC. DIM. ±	FRAC. DIM. ±	ANGULAR DIM. ±	DRILL, PUNCH, COMMERCIAL STOCK SIZES AND MANUFACTURERS TOLERANCES ARE NOT INCLUDED.			

1	GSB-1	459	9-25-56
REQ PER UNIT	MODEL	PROJECT NO.	ASSY. NO.
			DATE
USED ON			