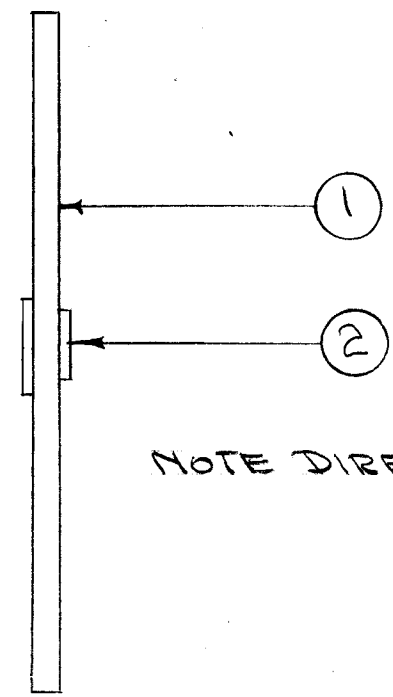
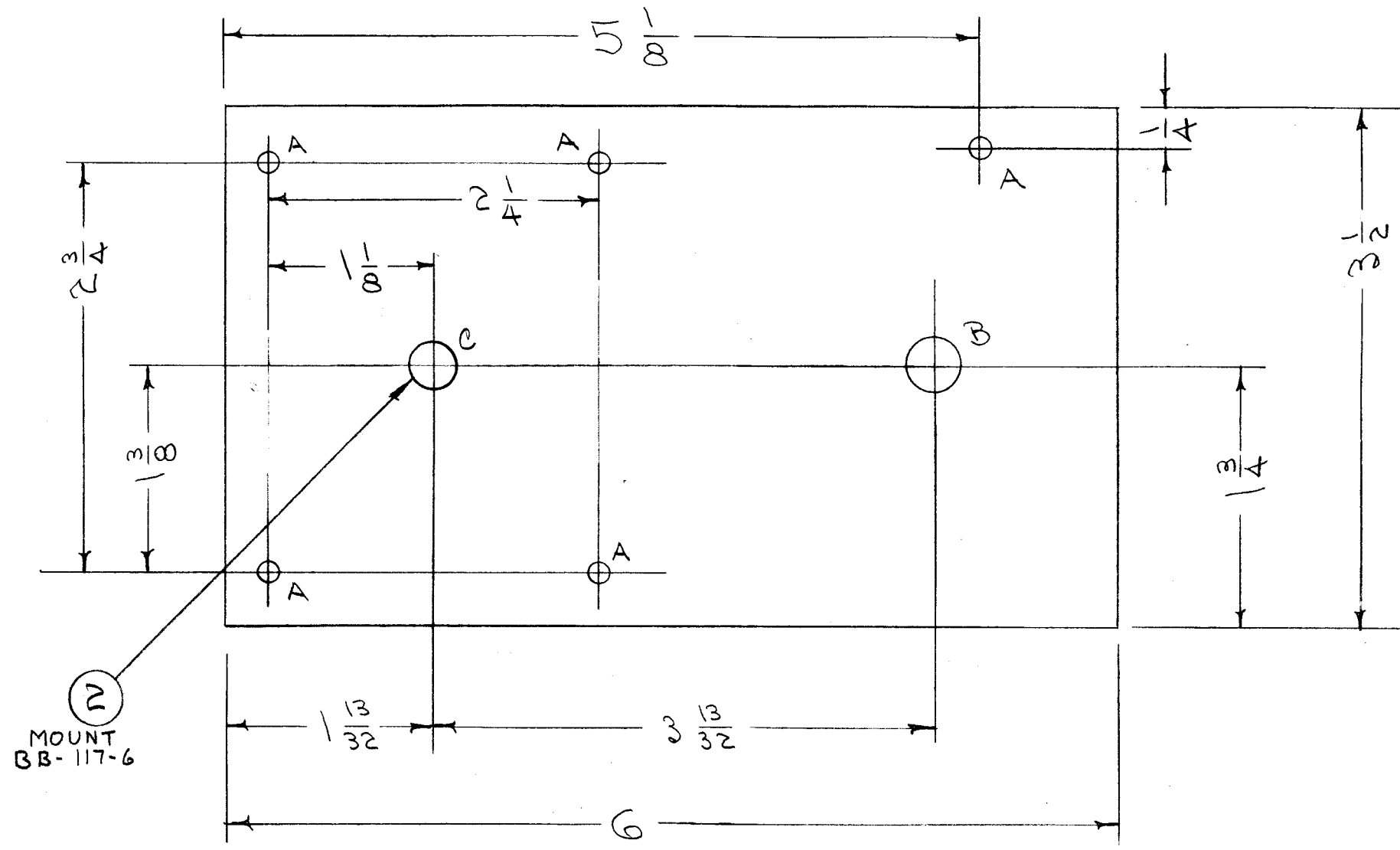


A-1302 D

A - 5/32 (.156) DIA. 5 HOLES REQ.
 B - 3/8 (.375) " 1 " "
 C - 5/16 (.312) D. 1 " "



NOTE DIRECTION OF BEARING

NOTICE TO PERSONS RECEIVING THIS DRAWING

THE TECHNICAL MATERIEL CORPORATION claims proprietary right in the material disclosed hereon. This drawing is issued in confidence for engineering information only and may not be reproduced or used to manufacture anything shown hereon without permission from THE TECHNICAL MATERIEL CORPORATION to the user. This drawing is loaned for mutual assistance and is subject to recall at any time.

Property of:

THE TECHNICAL MATERIEL CORPORATION
 MAMARONECK, NEW YORK

ISSUE	ITEM	CHANGED FROM	DATE	CH. NO.	DRAFTS	CHECKER	ENG. APP.
D	2	BB-117-6 WAS BB-108	A-5-60	2001	AK		
	1	ADDED "C" DIM. 5/16 D					
C	1	S-404 WAS S-101	12/10/59	1001	AB		EMN
B	2	"A" HOLES WERE 9/64	6/19/57	2	SC.	JAL	ALMO
	1	G WAS 6/16					
A	2	TWO "A" HOLES OUT	8/20/56	1	JAL	ALMO	
	1						

TOLERANCES		SCALE:
DEC. DIM. ±		MAXIMUM ALLOWABLE TOLERANCES HAVE BEEN DETERMINED AND ANY DEVIATIONS WILL BE CAUSE FOR REJECTION. REMOVE ALL BURRS AND SHARP EDGES
FRAC. DIM. ± 1/64		
ANGULAR DIM. ±		

1	GSB-1	459		S-17-56
REQ. PER UNIT	MODEL	PROJECT NO.	ASS'Y. NO.	DATE
USED ON				

1	2	BB-117-6	BEARING, NYLON FLANGED	
1	1	MS-942	DRIVE PLATE, (NO DWG.)	
REQ. ITEM	PART NO.		DESCRIPTION	SYMBOL
1/8 THICK			THE TECHNICAL MATERIEL CORP. MAMARONECK, NEW YORK	
STOCK SIZE				
ALUMINUM			DRIVE PLATE ASSY.	
MATERIAL			GSB-1	
5052-H32		ODD 5/16/56	JAL	ALMO
TYPE & TEMPER	HEAT TREAT. SPEC.	DRAWN	CHECKED	FINAL APPROVAL
S-404 YELLOW IRIDITE		HH	ALMO	A-1302 D.
FINISH & SPEC. NO.		ELEC. DES. APP.	MECH. DES. APP.	