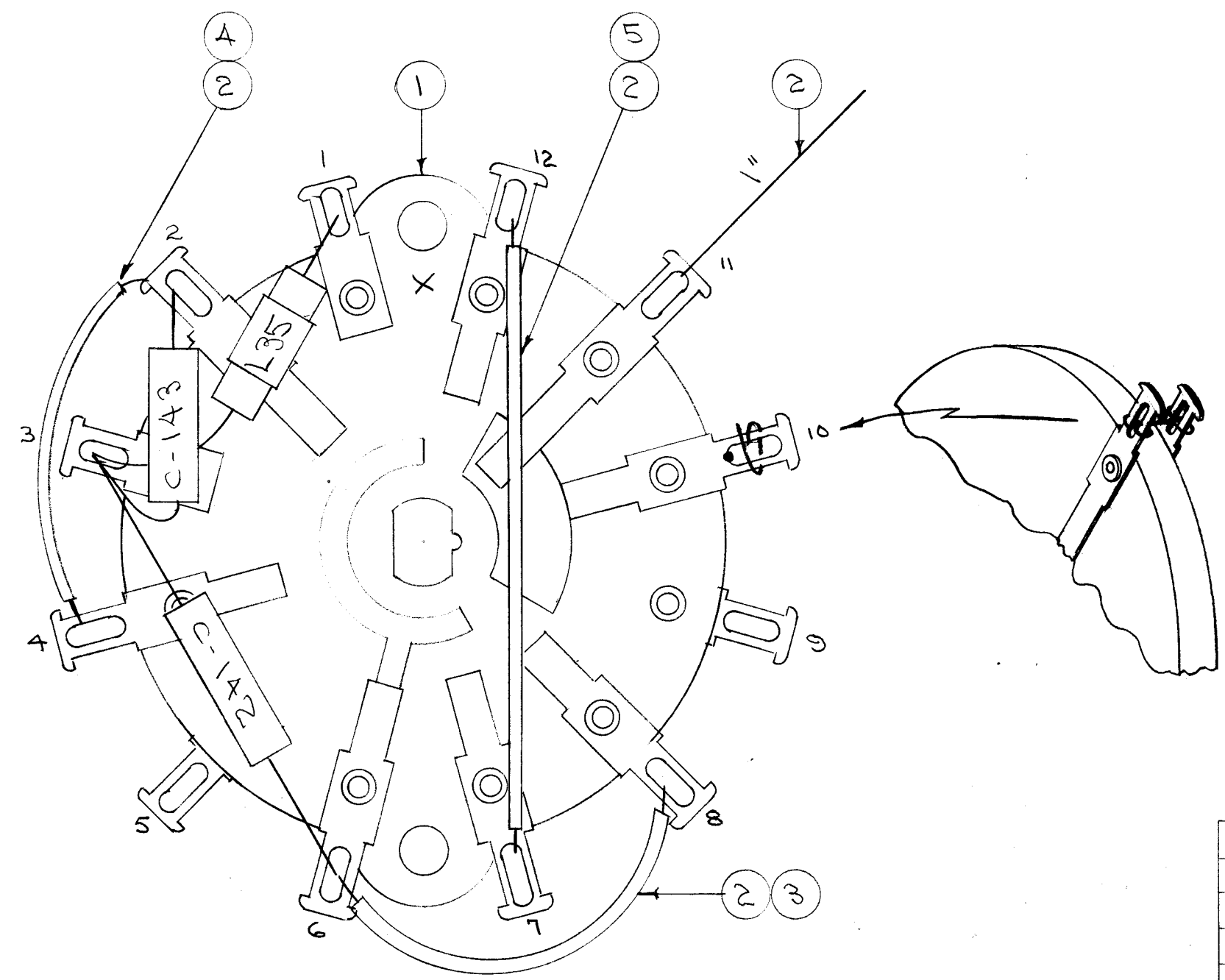


A-1348 A

NOTICE TO PERSONS RECEIVING THIS DRAWING

THE TECHNICAL MATERIEL CORPORATION claims proprietary right in the material disclosed hereon. This drawing is issued in confidence for engineering information only and may not be reproduced or used to manufacture anything shown hereon without permission from THE TECHNICAL MATERIEL CORPORATION to the user. This drawing is loaned for mutual assistance and is subject to recall at any time.

Property of:
THE TECHNICAL MATERIEL CORPORATION
 MAMARONECK, NEW YORK



CONNECT FRONT AND REAR CONTACTS OF POSITION 10 WITH BUSS WIRE (ITEM 2) AND SOLDER (ITEM 8).

X	8	BS-100	SOLDER, SOFT	
2	7	CMISE680G	CAPACITOR, FIXED	C142 C143
1	6	A-1344	COIL ASSY.	L35
X	5	PX-104-6-.034	INSULATION, SLEEVING	BLUE
X	4	PX-104-8-.034	" " "	OR.
X	3	PX-104-1-.034	" " "	BLK
X	2	WL-100-6	WIRE, BUSS BAR 20GA.	
1	1	WS-100-7	SWITCH WAFER	

REQ. ITEM	PART NO.	DESCRIPTION	SYMBOL
THE TECHNICAL MATERIEL CORP.			
MAMARONECK, NEW YORK			
STOCK SIZE			
SWITCH WAFER SUB ASSY.			
GPR-50			
MATERIAL			
		008 9/11/6	A.J.I.
		J.H.R.	A.J.I.
			A-1348 A

A	1	PIN 10 DETAIL ADDED	11/14/56	1	16	P.L.X.	A.J.J.
ISSUE	ITEM	CHANGED FROM	DATE	CH. NO.	DRAFTS	CHECKER	ENG. APP.
TOLERANCES			SCALE:				
DEC. DIM. ±			MAXIMUM ALLOWABLE TOLERANCES HAVE BEEN DETERMINED AND ANY DEVIATIONS WILL BE CAUSE FOR REJECTION.				
FRAC. DIM. ±			REMOVE ALL BURRS AND SHARP EDGES				
ANGULAR DIM. ±							

1	GPR-50	PROJECT NO.	ASS'Y. NO.	DATE
REQ. PER UNIT	MODEL	PROJECT NO.	ASS'Y. NO.	DATE
USED ON				