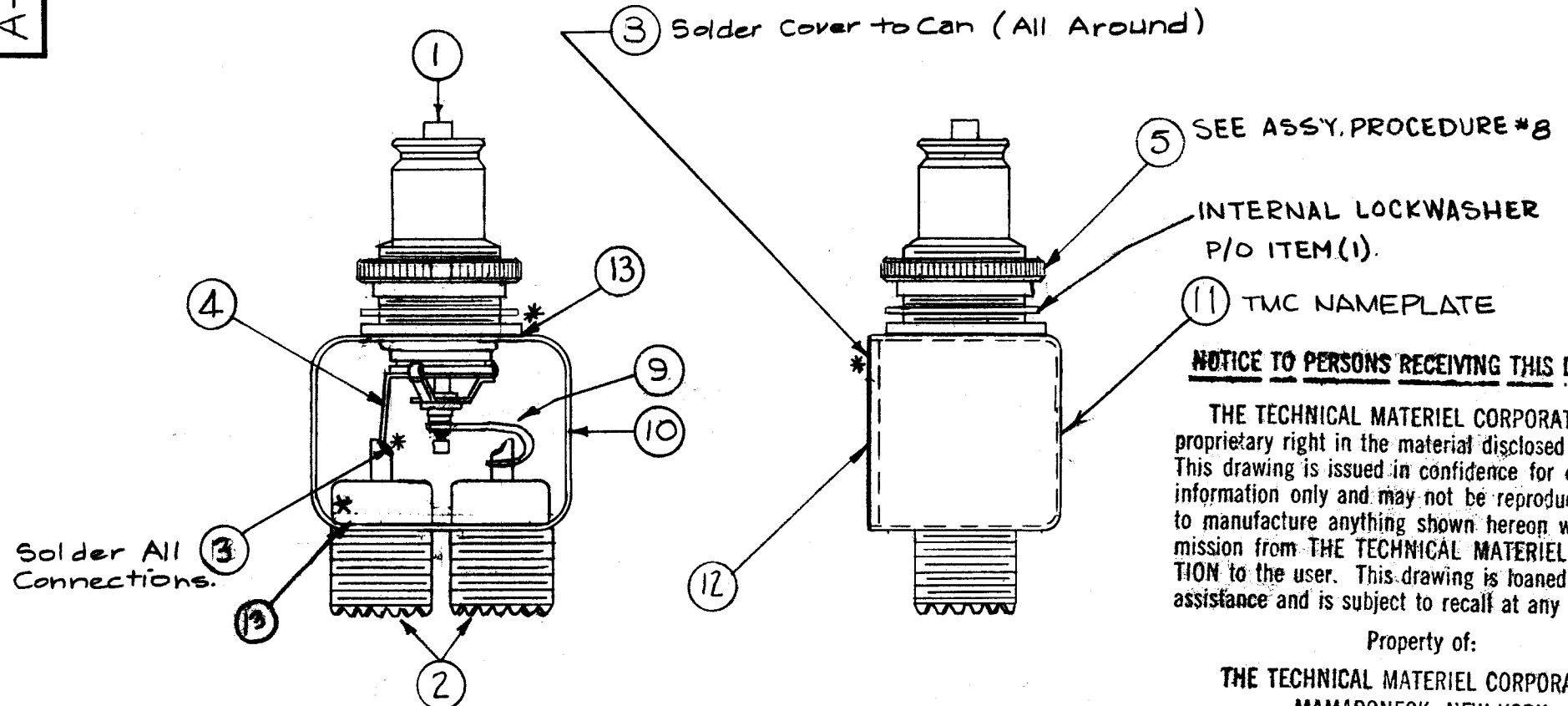


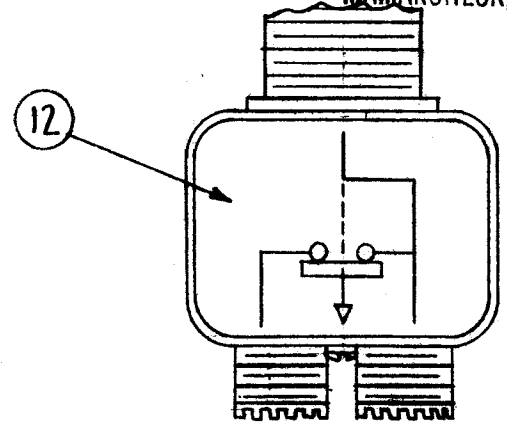
A-1433 F



NOTICE TO PERSONS RECEIVING THIS DRAWING

THE TECHNICAL MATERIEL CORPORATION claims proprietary right in the material disclosed hereon. This drawing is issued in confidence for engineering information only and may not be reproduced or used to manufacture anything shown hereon without permission from THE TECHNICAL MATERIEL CORPORATION to the user. This drawing is loaned for mutual assistance and is subject to recall at any time.

Property of:
THE TECHNICAL MATERIEL CORPORATION
 MAMARONECK, NEW YORK



NOTES:

- 1- INDUCTION HEATING EQUIPMENT SET AT:
 AMPERES -
 SECONDS -
- 2- USE ITEM (13) FOR MOUNTING ITEM (1). & ITEM 2.
- 3- USE ITEM (3) FOR SEALING COVER ITEM (10).
- 4- STRAP ITEM (9) MUST BE KEPT AS FLEXIBLE AS POSSIBLE. DO NOT ALLOW SOLDER TO RUN OVER STRAP. LAY STRAP IN SO THAT IT CANNOT TOUCH CAN OR CONNECTOR BODIES.
- 5- FINISH AS FOLLOWS:
 S-114 - ZINC CHROMATE PRIMER.
 S-115 - TMC SMOOTH GRAY ENAMEL.
 (DO NOT PAINT CONNECTOR BODIES.)
- 6- AFFIX ITEM (12) TO FRONT AS SHOWN.
- 7- AFFIX ITEM (11) TO REAR AS SHOWN.
- 8- REPLACE NT-125 P/O JJ-162 (ITEM (1)) WITH (ITEM (5)) NT-127.
- 9- * -DENOTES SOLDER ALL AROUND.

X	13	BS-100-2	SOLDER, TIN ALLOY	
1	12	NP-22G-1	SCHEMATIC DIAGRAM	
1	11	NP-488	TMC, NAME PLATE	
1	10	BX-154-1	Can & Cover	
1	9	MS-1769	Strap, Connecting	
	8	DELETED	Deleted (was NTH0632BCB)	
	7	DELETED		
	6	DELETED		
1	5	NT-127	SCREW NUT, KNURLED	
X	4	WL-100-5	WIRE, BUSS BAR #18	
X	3	BS-100	SOLDER, TIN ALLOY	
2	2	JJ-218	RECEPTACLE, BULKHEAD UHF SERIES	
1	1	JJ-162	Connector, Receptacle, Switch Type	
REQ. ITEM	PART NO.		DESCRIPTION	SYMBOL
H			THE TECHNICAL MATERIEL CORP.	
STOCK SIZE			MAMARONECK, NEW YORK	
N			FINAL ASS'Y,	
MATERIAL			SW-195	
N	N	6-24-57	DRAWN	CHECKED
TYPE & TEMPER		HEAT TREAT. SPEC.	DATE	FINAL APPROVAL
See Note			6-24-57	
FINISH & SPEC. NO.		ELEC. DES. APP.	MECH. DES. APP.	
				A-1433 F

F		IT 2 WAS JT155 QTY 1 IT 10 WAS BX 154 IT 13 WAS BS106-4 IT 3 WAS BS100-2	4/19/66	16102	WW	JCB	MAK
E	2	ITEMS (3)(4)(5) ADDED	1-7-63	7967	JCB	JCB	JCB
D	1	PICTORIAL COMPLETELY UPDATED					
C	5	Item 13 was BS-100	5-3-61	4808	J.C.B.	J.C.B.	J.C.B.
	4	ITEM 9 WAS WL-103-1					
	3	ITEM 7 DELETED WAS LW60MRC	4/7/61	4614	JCB	JCB	JCB
	2	ITEM 6 DELETED WAS XBS0632BC3					
	1	ITEM 4 DELETED WAS LW504MRC					
B	3	ITEM 3 DELETED WAS SCBS0440BE7					
	2	ITEM 11 ADDED	8/6/58				
	1	ITEM 12 WAS LD-346					
A	3	PICTORIAL CORRECTED ITEM 1 WAS JT-150		418	JCB	JCB	JCB
	2	PICTORIAL CORRECTED ITEM 5 WAS SCBS0632BC5 ITEM 6 & 8 DELETED (FW NUT)	10/21/57	1	JCB	JCB	JCB
	1	ITEM 7 WAS LW106MRC ITEM 2 WAS PM-445 ITEM 11, MS-1050, DELE.					
ISSUE	ITEM	CHANGED FROM	DATE	CH. NO.	DRAFTS	CHECKER	ENG. APP.

TOLERANCES		SCALE:
DEC. DIM. ±	MAXIMUM ALLOWABLE TOLERANCES HAVE BEEN DETERMINED AND ANY DEVIATIONS WILL BE CAUSE FOR REJECTION.	
RAC. DIM. ±	REMOVE ALL BURRS AND SHARP EDGES	
ANGULAR DIM. ±		

1	SW-195		6-24-57
REQ. PER UNIT	MODEL	PROJECT NO.	ASS'Y. NO.
			DATE
USED ON			