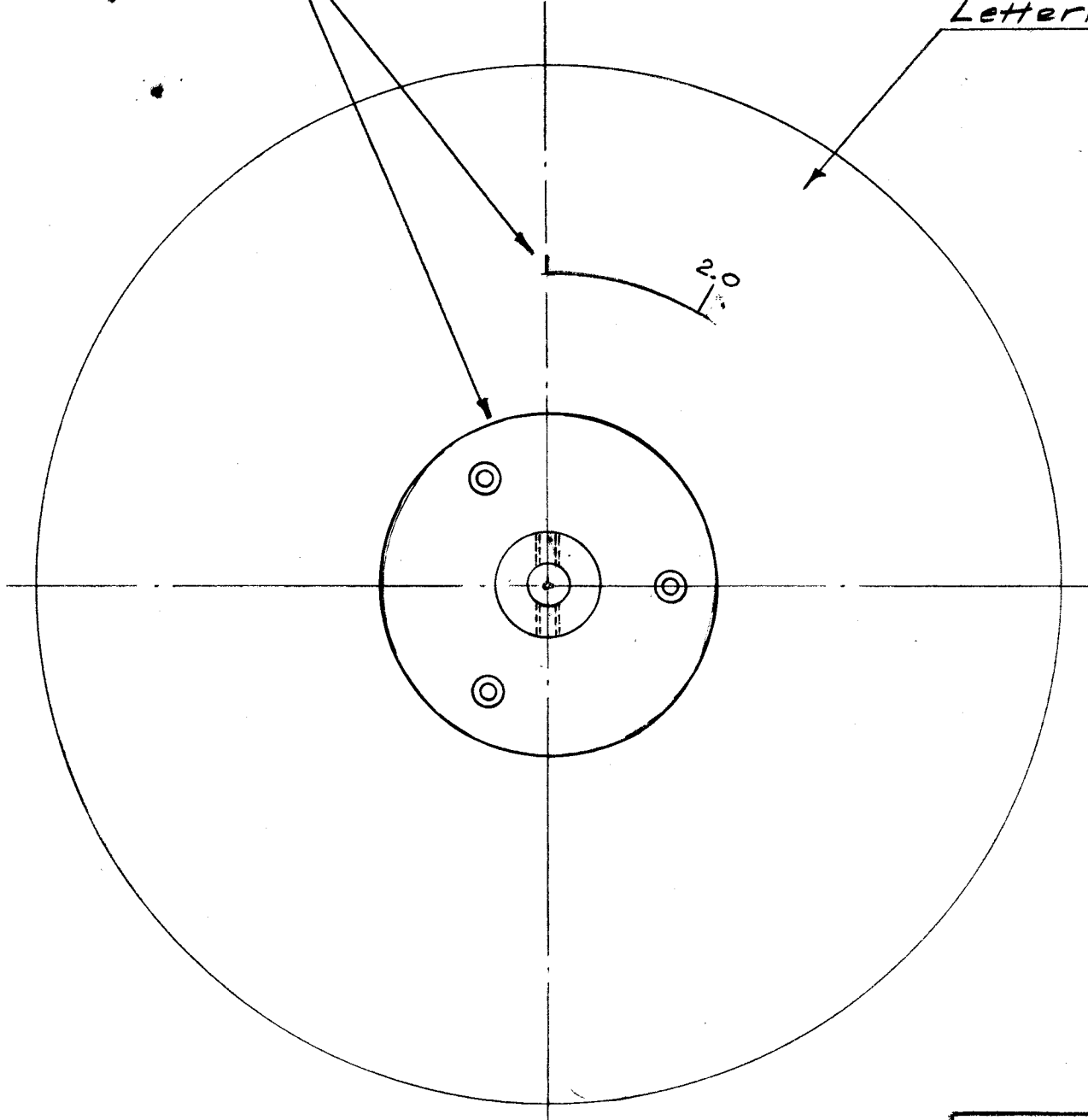


A-1439 C

Note position of support plate
Ass'y. to Dial Calibration marker.

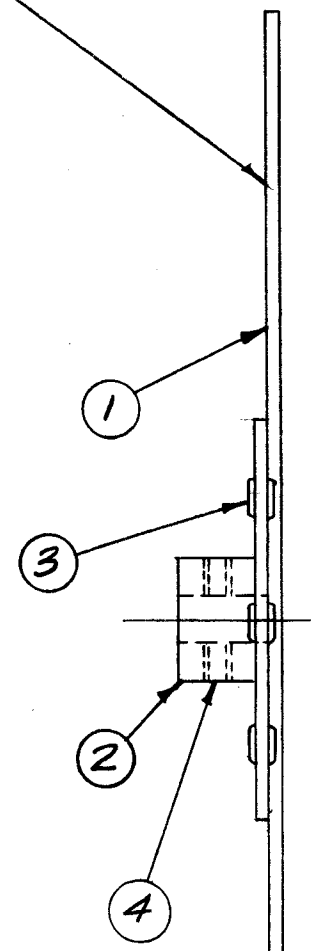
Lettering This Side



NOTICE TO PERSONS RECEIVING THIS DRAWING

THE TECHNICAL MATERIEL CORPORATION claims proprietary right in the material disclosed hereon. This drawing is issued in confidence for engineering information only and may not be reproduced or used to manufacture anything shown hereon without permission from THE TECHNICAL MATERIEL CORPORATION to the user. This drawing is loaned for mutual assistance and is subject to recall at any time.

Property of:
THE TECHNICAL MATERIEL CORPORATION
MAMARONECK, NEW YORK



| ASSY NO. | ITEM 1 | USED ON |
|----------|--------|--------------|
| A1439 | LD352 | SBE 3,4 |
| A1439-2 | LD1525 | SBE 6,8,9,10 |

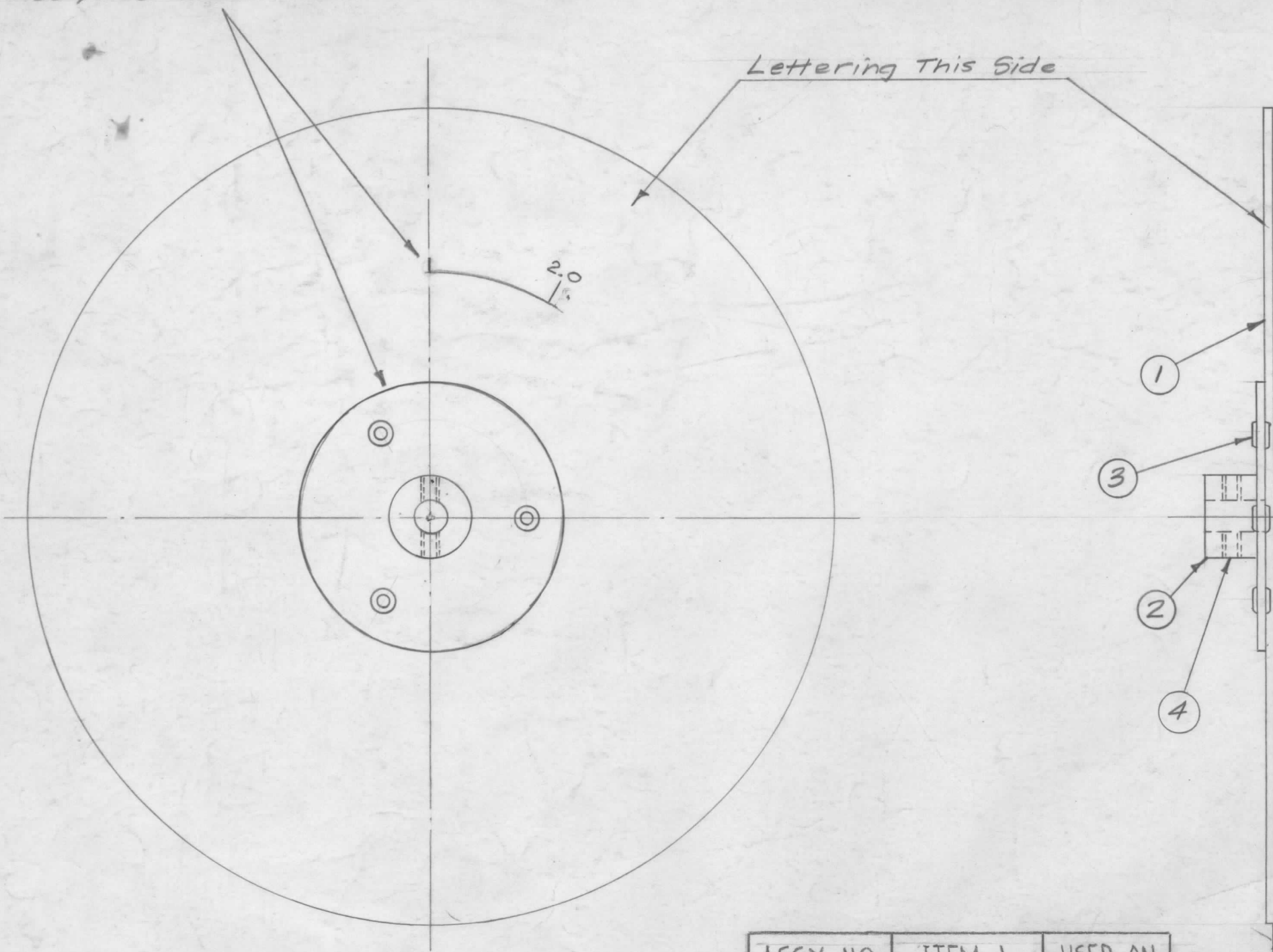
| REQ. ITEM | PART NO. | DESCRIPTION | SYMBOL |
|---|--------------|----------------------|----------------|
| 2 | 4 AN565D6-H3 | Screw, Set | |
| 3 | 3 EY-100-1 | Eyelet | |
| 1 | 2 A-1023 | Support Plate Ass'y. | |
| 1 | 1 SEE CHART | Lettering, Dial | |
| THE TECHNICAL MATERIEL CORP. MAMARONECK, NEW YORK RF DIAL ASS'Y. SBE-1 | | | |
| STOCK SIZE | | | |
| MATERIAL | | | |
| TYPE & TEMPER | | | |
| HEAT TREAT. SPEC. | | | |
| DRAWN | | CHECKED | FINAL APPROVAL |
| 16/14/57 | | RWP | AKB |
| | | A-1439 C | |

| ISSUE | ITEM | CHANGED FROM | DATE | CH. NO. | DRAFTS | CHECKER | ENG. APP. |
|----------------|------|---|----------|---------|--------|---------|-----------|
| C | 1 | CLERICAL CHANGE | 12/31/65 | CC | | | |
| B | 2 | B/M: IT(A) WAS LD352; | 1/14/65 | 13287 | 98. | | |
| A | 1 | PICT: ASSY # CHART ADD. | 12/2/57 | 1 | 16 | | |
| TOLERANCES | | SCALE: | | | | | |
| DEC. DIM. ± | | MAXIMUM ALLOWABLE TOLERANCES HAVE BEEN DETERMINED AND ANY DEVIATIONS WILL BE CAUSE FOR REJECTION. | | | | | |
| FRAC. DIM. ± | | REMOVE ALL BURRS AND SHARP EDGES | | | | | |
| ANGULAR DIM. ± | | | | | | | |

| | | | |
|---------------|-------|---------|----------|
| 1 | SBE-3 | AP-100 | 11-25-59 |
| 1 | SBE-2 | | 5-5-58 |
| 1 | SBE-1 | | 7-18-57 |
| REQ. PER UNIT | MODEL | PROJECT | |

A-1439 C

Note position of support plate
Ass'y. to Dial Calibration marker. (below 2.0)



NOTICE TO PERSONS RECEIVING THIS DRAWING

THE TECHNICAL MATERIEL CORPORATION claims proprietary right in the material disclosed hereon. This drawing is issued in confidence for engineering information only and may not be reproduced or used to manufacture anything shown hereon without permission from THE TECHNICAL MATERIEL CORPORATION to the user. This drawing is loaned for mutual assistance and is subject to recall at any time.

Property of:
THE TECHNICAL MATERIEL CORPORATION
MAMARONECK, NEW YORK

| ASSY NO. | ITEM 1 | USED ON |
|----------|--------|--------------|
| A1439 | LD352 | SBE 3,4 |
| A1439-2 | LD1525 | SBE 6,8,9,10 |

| REQ. ITEM | PART NO. | DESCRIPTION | SYMBOL |
|--------------------|------------|---|---------|
| 2 4 | AN565D6-H3 | Screw, Set | |
| 3 3 | EY-100-1 | Eyelet | |
| 1 2 | A-1023 | Support Plate Ass'y. | |
| 1 1 | SEE CHART. | Lettering, Dial | |
| STOCK SIZE | | THE TECHNICAL MATERIEL CORP. MAMARONECK, NEW YORK RF DIAL ASS'Y. SBE-1 | |
| MATERIAL | | | |
| TYPE & TEMPER | | | |
| HEAT TREAT. SPEC. | | DRAWN | CHECKED |
| FINISH & SPEC. NO. | | ELEC. DES. APP. MECH. DES. APP. | |

| ISSUE | ITEM | CHANGED FROM | DATE | CH. NO. | DRAFTS | CHECKER | ENG. APP. |
|-------|------|------------------------|----------|---------|--------|---------|-----------|
| C | 1 | CLERICAL CHANGE | 12/31/65 | CC | 2 | JCF | NW |
| B | 2 | B/M: IT.(A) WAS LD352; | 1/14/65 | 13287 | 98. | @ | NW |
| A | 1 | ITEM 4 Added | 12/2/57 | 1 | 16 | JMB | NW |

| TOLERANCES | | SCALE: |
|----------------|---|--------|
| DEC. DIM. ± | MAXIMUM ALLOWABLE TOLERANCES HAVE BEEN DETERMINED AND ANY DEVIATIONS WILL BE CAUSE FOR REJECTION. REMOVE ALL BURRS AND SHARP EDGES | |
| FRAC. DIM. ± | | |
| ANGULAR DIM. ± | | |

| REQ. PER UNIT | MODEL | PROJECT NO. | ASS'Y. NO. | DATE | USED ON |
|---------------|-------|-------------|------------|----------|---------|
| 1 | SBE-3 | | AP-100 | 11-25-59 | |
| 1 | SBE-2 | | | 5-5-58 | |
| 1 | SBE-1 | | | 7-18-57 | |