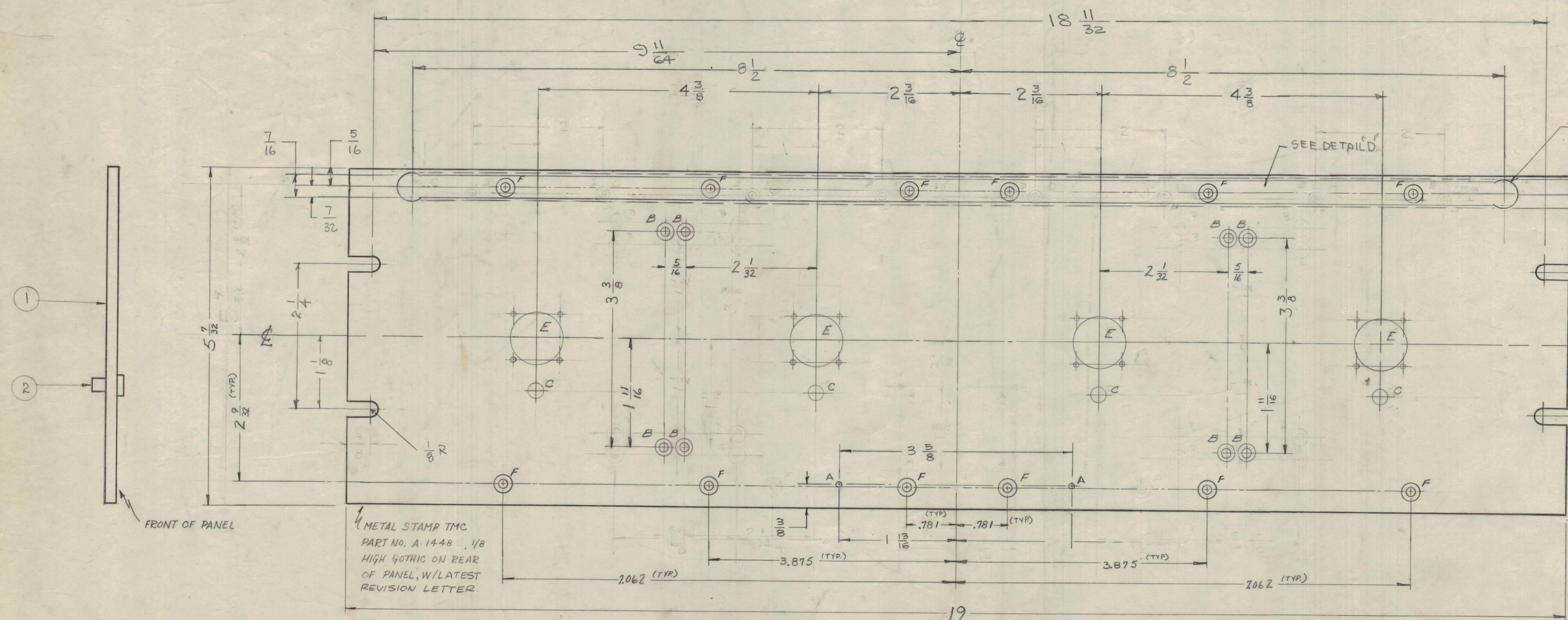
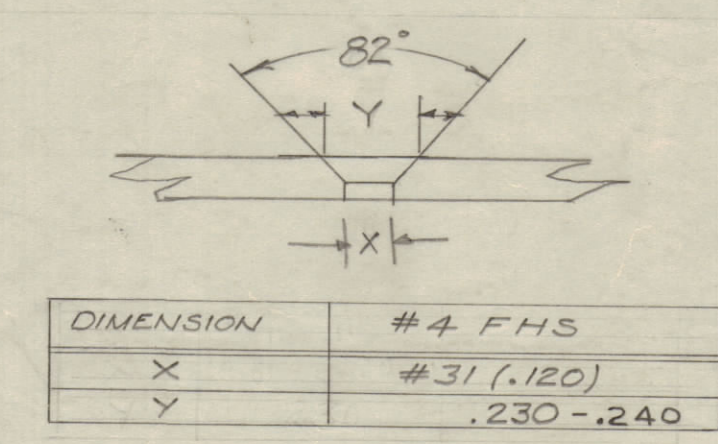


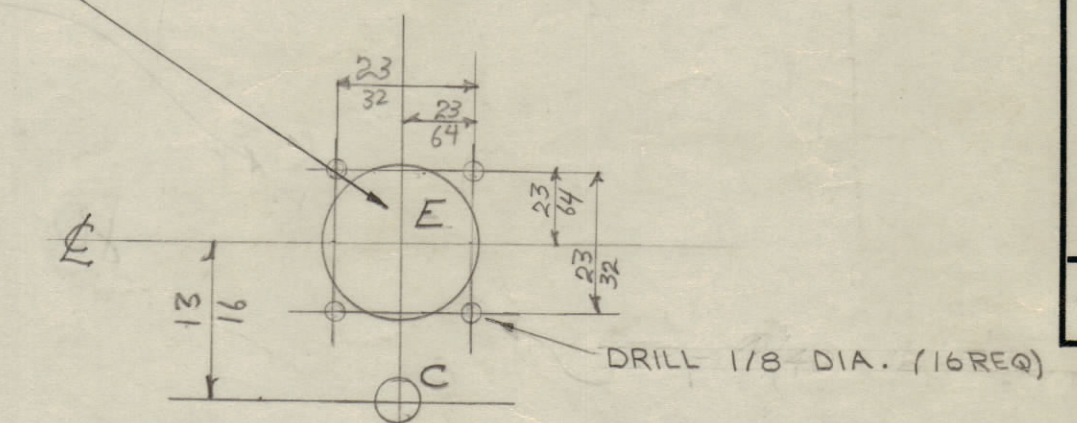
IF IT IS FOUND DESIRABLE TO CHANGE ANY TOLERANCE OR OTHER DETAIL SPECIFIED ON THIS DRAWING NOTIFY THE PURCHASER PROMPTLY.
 MAXIMUM ALLOWABLE TOLERANCES HAVE BEEN DETERMINED AND DEVIATIONS WILL BE CAUSE FOR REJECTION. REMOVE ALL BURRS AND SHARP EDGES

A - #50 (.070) D. 2 REQ.
 B - DRILL & C'SINK FOR #4 F.H.S. 8 REQ. SEE CHART



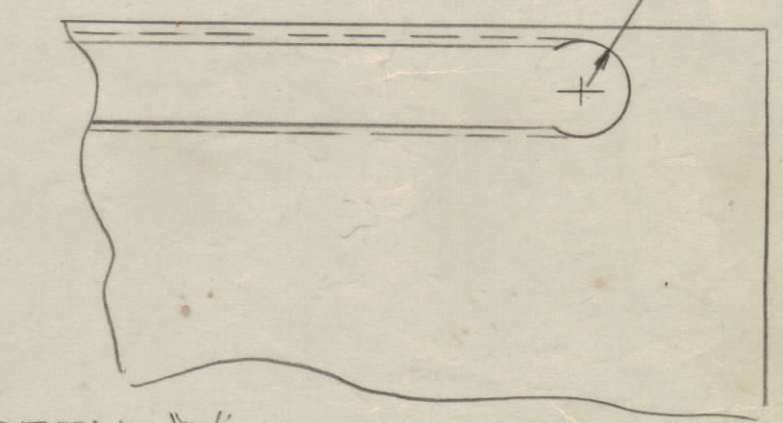
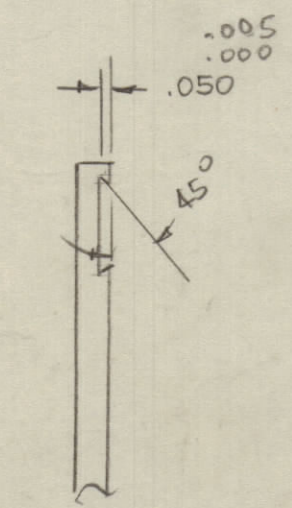
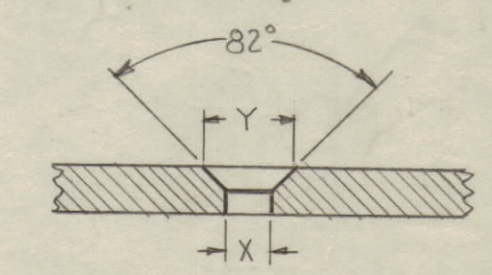
1/4 R TYP C-DRILL FOR TIGHT FIT (CLASS 6) OF BB 115 (.246 ±.002) AFTER CAUSTIC DIP. 4 REQ.

E - 13/16 (.812) D. 4-REQ.



F - DRILL & C'SINK FOR #6 F.H.S. - 12 REQ.

DIM	#6-32 F.H.S.
X	.144
Y	.284-.294



METAL STAMP TMC
 PART NO. A-1448 1/8
 HIGH GOTHIC ON REAR
 OF PANEL, W/LATEST
 REVISION LETTER.

FRONT OF PANEL

NOTICE TO PERSONS RECEIVING THIS DRAWING

THE TECHNICAL MATERIEL CORPORATION claims proprietary right in the material disclosed hereon. This drawing is issued in confidence for engineering information only and may not be reproduced or used to manufacture anything shown hereon without permission from THE TECHNICAL MATERIEL CORPORATION to the user. This drawing is loaned for mutual assistance and is subject to recall at any time.

Property of:
 THE TECHNICAL MATERIEL CORPORATION
 MAMARONECK, NEW YORK

ONLY PAINT FRONT & EDGES OF PANEL

NOTE: FINISH S-404 IRIDITE S-114 - ZINC CHROMATE PRIMER. PAINT PER S1165 (MIL-E-15090 REV. B TYPE 3 CLASS 2), OR PRIME & PAINT IN ACCORDANCE TO CUSTOMERS SPECIFICATION.

G	DEL. 8" HOLE TOP FOR 348THD ADDRESS 17 1/2 LONG	42630	22095	EDL		
F	RELOC NP HOLES	8-10-78	21671	UPE		
E	REVISED HOLE DIMS DELE. C ON TMC STAMP	8-26-64	16894	RME		
D	DWG UPDATED	1-26-63	10476			
C	QDP-7C154 (MODEL) WAS QDP-354	11-	75			
	QDP-1C154 (MODEL) WAS QDP-354	1-	4			
	MODEL QDP-R68C154 ADDED	62	3			
	102 F HOLES ADDED					
	2 1/8" HOLES RELOCATED					
	1 1/4" HOLE DELETED					
B	C HOLES WERE 1/32 D.	8-24-62	7497			
A	S-404 IRIDITE WAS S-101 CAUSTIC DIP	10-7-57	1001	AB	EMX	

ALL OTHERS	DEC. DIM. ± FRAC. DIM. ± ANGULAR DIM. ±	DRILL PUNCH, COMMERCIAL STOCK SIZES AND MANUFACTURERS TOLERANCES ARE NOT INCLUDED.
------------	---	--

1	QDP-RGBC154		11-1-62
1	QDP-7C154		8-27-57
1	QDP-1C154		7-25-57
REQ PER UNIT	MODEL	PROJECT NO.	ASSY. NO.
			DATE

4	2	BB-115	BEARING, OILITE	C
1	1	MS-1123	PANEL, FRONT (NO DWG)	
REQ	ITEM	PART NO.	DESCRIPTION	SYMBOL
		3/16	THE TECHNICAL MATERIEL CORP. MAMARONECK, NEW YORK	
ALUMINUM			FRONT PANEL, MACHINING	
MATERIAL		WEIGHT PER PC		
		2024-73		
TYPE & TEMPER				
		ALM-	DRAWN	ELEC. DES. APP
			CHECKED	FINAL A
HEAT TREAT SPEC.		SEE NOTE		
FINISH & SPEC. NO.		A-		