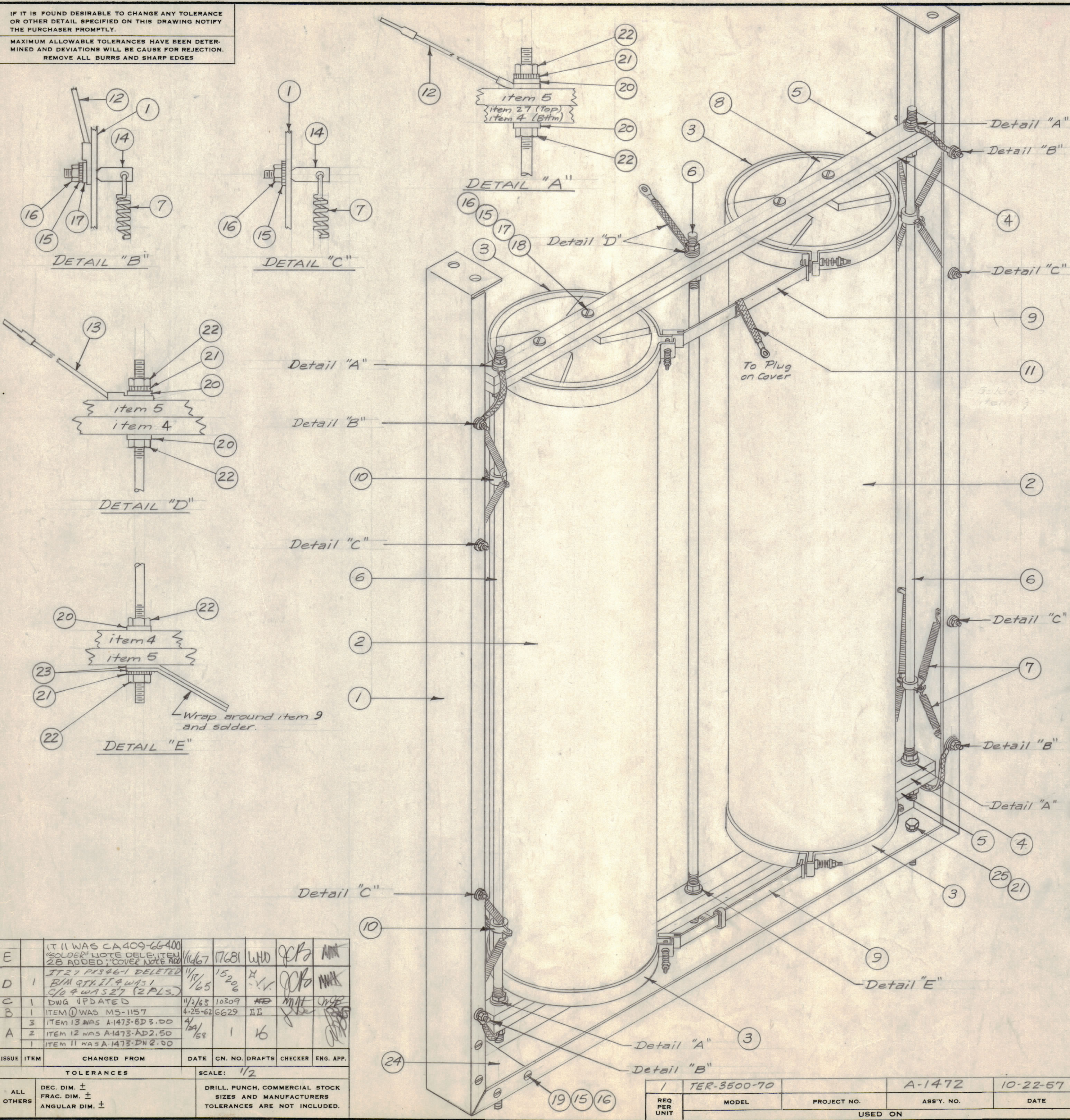


IF IT IS FOUND DESIRABLE TO CHANGE ANY TOLERANCE OR OTHER DETAIL SPECIFIED ON THIS DRAWING NOTIFY THE PURCHASER PROMPTLY.
 MAXIMUM ALLOWABLE TOLERANCES HAVE BEEN DETERMINED AND DEVIATIONS WILL BE CAUSE FOR REJECTION.
 REMOVE ALL BURRS AND SHARP EDGES

NOTICE TO PERSONS RECEIVING THIS DRAWING

THE TECHNICAL MATERIEL CORPORATION claims proprietary right in the material disclosed hereon. This drawing is issued in confidence for engineering information only and may not be reproduced or used to manufacture anything shown hereon without permission from THE TECHNICAL MATERIEL CORPORATION to the user. This drawing is loaned for mutual assistance and is subject to recall at any time.

Property of:
 THE TECHNICAL MATERIEL CORPORATION
 MAMARONECK, NEW YORK



NOTE:
 NOT COVER ITEM 11 WITH ITEM 28 BEFORE SOLDERING TO ITEM 9

3"	28	PX370-8-7	SLEEVING, SHRINK
	21	DELETED	Top Support, Resistor
X	26	BS-100	Solder, Soft
2	25	SCHH2520BC12	Screw, Hex Head
2	24	MS-766	Gusset, Resistor Support
2	23	TE-111-1	Lug, Solder
12	22	NTH2528B 14	Nut, Hex.
8	21	LWE25MRN	Lockwasher, External

A-1471 E

11	20	FW25HBN	Washer, Flat
8	19	SCFP0632BN6	Screw, Machine
8	18	SCBP0632BN6	Screw, Machine
12	17	FW06HBN	Washer, Flat
32	16	NTH0632BN10	Nut, Hex.
32	15	LWE06MRN	Lockwasher, External
16	14	SC-106-1	Bolt, Spade, Straight
1	13	CA-409-98-3.50	Lead, Electrical
4	12	CA-409-97-2.75	Lead, Electrical
1	11	CA-409-66-4.75	Lead, Electrical
4	10	MC-105-2	Coupling, Fixed
2	9	MS-202-1-3.00	Lead, Connecting, 7/16" Wide
8	8	PX-314	Support, Resistor, Inside
16	7	SP-124	Spring, Extension
3	6	PM-373-1	Rod, Support (20'4" Lg)
2	5	PM-374	Support, Resistor
2	4	PX-315	Insulator, Bottom
4	3	A-1144	Strap Assembly
2	2	RR-117-140	Resistor, Fixed, 900 Watts
1	1	MS-745	Main Support, Resistor

E		IT 11 WAS CA409-66-400 SOLDER NOTE DELETED ITEM 28 ADDED, COVER NOTE ADDED	11/16/67	17681	WHD	JCB	MM
D	1	IT 27 PX346-1 DELETED BIM 9TH IT 9 WAS 1 GO 4 WAS 27 (2 PLS.)	11/18/65	15206	A.V.	JCB	MM
C	1	DWG UPDATED	11/2/68	10209	AB	MHT	MM
B	1	ITEM 10 WAS MS-1157	4-25-62	6629	AB	JCB	MM
A	3	ITEM 13 WAS A-1473-8D 3.00	4/20/58	1	16	JCB	MM
A	2	ITEM 12 WAS A-1473-AD 2.50					
A	1	ITEM 11 WAS A-1473-DN 2.00					
ISSUE	ITEM	CHANGED FROM	DATE	CN. NO.	DRAFTS	CHECKER	ENG. APP.
		TOLERANCES	SCALE: 1/2				
ALL OTHERS	DEC. DIM. ± FRAC. DIM. ± ANGULAR DIM. ±		DRILL, PUNCH, COMMERCIAL STOCK SIZES AND MANUFACTURERS TOLERANCES ARE NOT INCLUDED.				

1	TER-3500-70	A-1472	10-22-57
REQ PER UNIT	MODEL	PROJECT NO.	DATE
		ASS'Y. NO.	
	USED ON		

THE TECHNICAL MATERIEL CORP. MAMARONECK, NEW YORK			
RESISTOR SUPPORT			
A55'Y., TER-3500-70			
STOCK SIZE	K 10-22-57		
MATERIAL	WEIGHT PER PC.	DRAWN	MECH. DES. APP.
		JCB	JCB
TYPE & TEMPER	HEAT TREAT. SPEC.	FINAL APPROVAL	
		A-1471 E	
FINISH & SPEC. NO.			