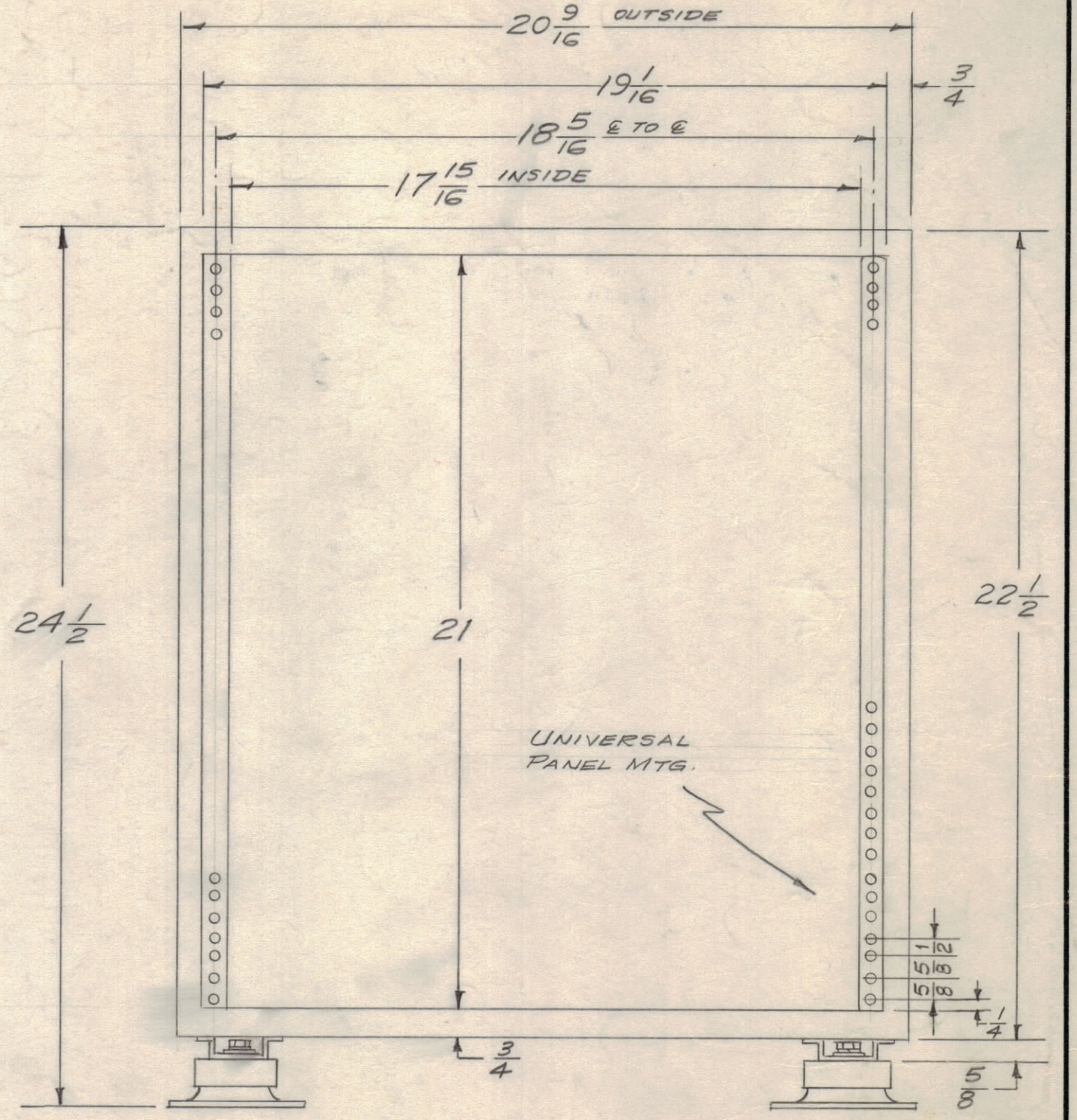
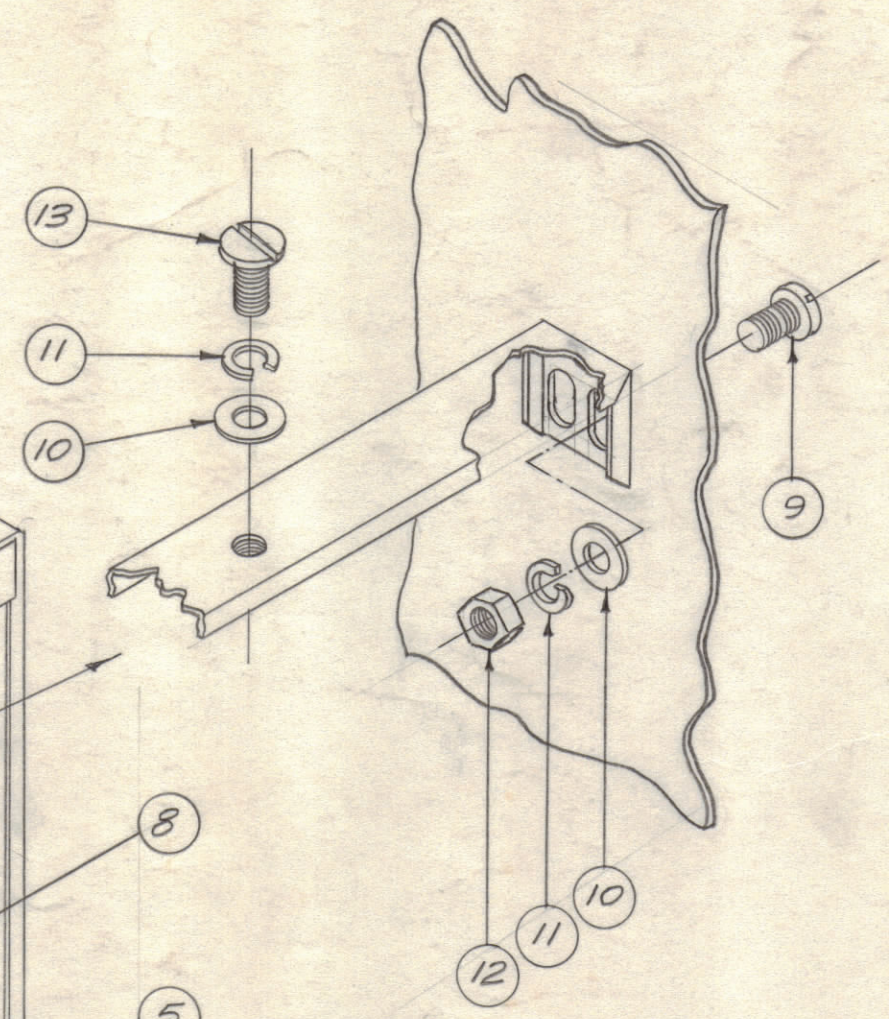
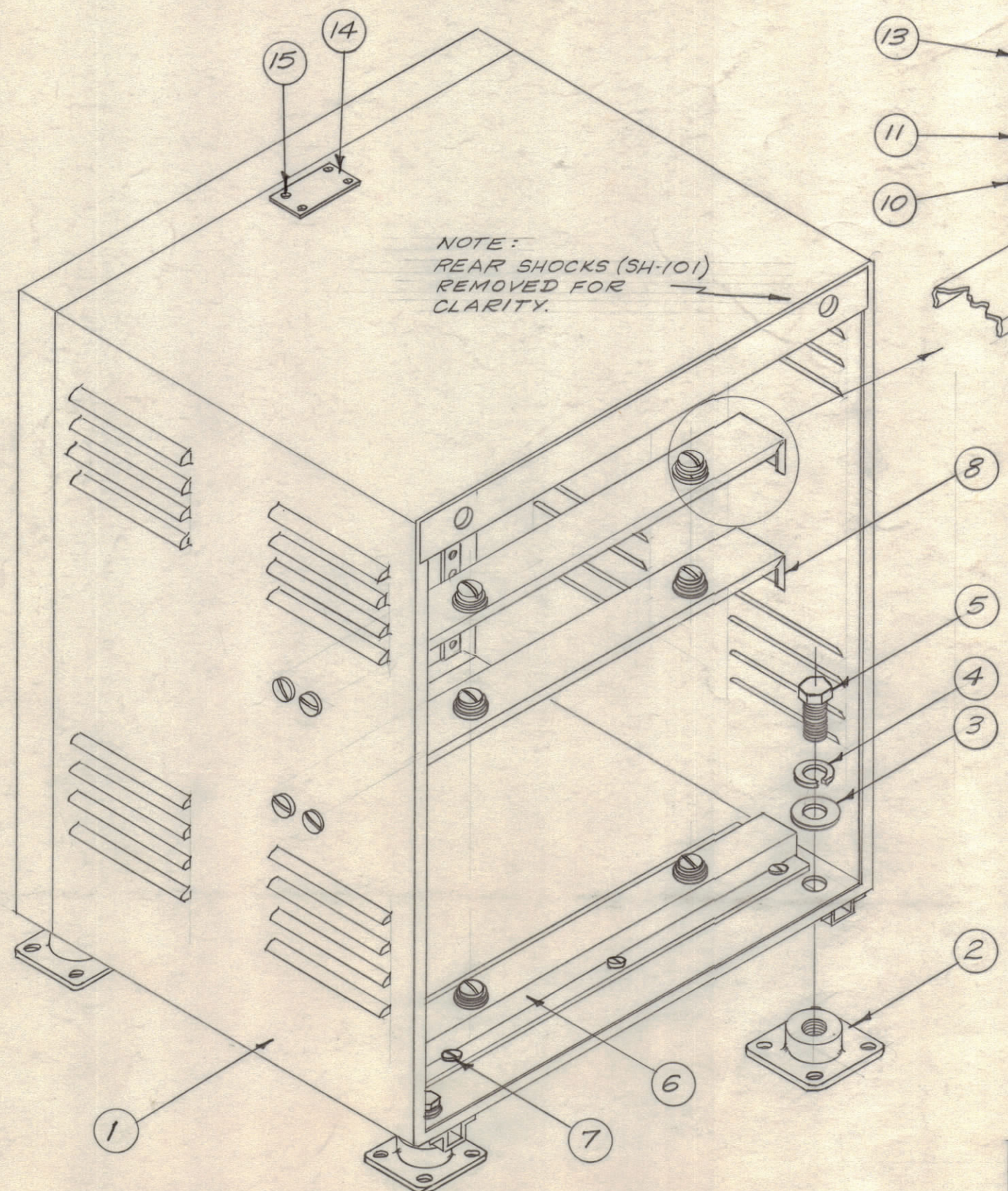


IF IT IS FOUND DESIRABLE TO CHANGE ANY TOLERANCE OR OTHER DETAIL SPECIFIED ON THIS DRAWING NOTIFY THE PURCHASER PROMPTLY.

MAXIMUM ALLOWABLE TOLERANCES HAVE BEEN DETERMINED AND DEVIATIONS WILL BE CAUSE FOR REJECTION. REMOVE ALL BURRS AND SHARP EDGES



A-1524 F

ITEM 14 NO.	FOR CABINET TYPE-	ITEM NO. 6*
NP-103-42	MODEL RAK-4 (COMM.)	MS-1215-1
NP-221	MODEL CY-2416/U (NAVY)	MS-1215-1
NP-103-42	MODEL RAK-4A	MS-1215-2

4	15	SFB0256SN3	Screw, Thread Cutting	
1	14	SEE CHART	Nameplate, Identification	
6	13	SCBP1032BN12	Screw, Machine	
8	12	NTH1032BN12	Nut, Hex.	
14	11	LWS10MRN	Lockwasher, Split	
14	10	FW10HBN	Washer, Flat	
8	9	SCBP1032BN8	Screw, Machine	
2	8	MS-1219	Bracket, Support	
6	7	SFB0832SN6	Screw, Thread Cutting	
1	6	SEE CHART	SUPPORT, Chassis	
6	5	SCHH2520SN12	Screw, Hex. Head	
6	4	LWS25MRN	Lockwasher, Split	
6	3	FW-100-5-SN	Washer, Flat	
6	2	SH-101	Shock Absorber	
1	1	MS-1216-1	Cabinet, Electrical Equip.	

ISSUE	ITEM	CHANGED FROM	DATE	CN. NO.	DRAFTS	CHECKER	ENG. APP.
F	1	CLERICAL CHANGE	3-5-65	#	22	JCS	
E	9	ITEM 15 WAS SFB0256SC3	6	22	4	JCS	JCS
	8	ITEM 12 WAS SCBS1032BN12					
	7	ITEM 12 WAS NTH1032BN12					
	6	ITEM 11 WAS LWS10MRN					
	5	ITEM 10 WAS FW10HBN					
	4	ITEM 7 WAS SFB0832SN6					
D	1	ITEM 6 WAS MS-1215	5-11-60	2256	CY	JCS	JCS
	C	SCBS1032BN6 WAS SCBS1032BN6	14	58	J.C.B.	JCS	JCS
		LWS10MRN WAS LWS10MSC					
B	1	REDRAWN-REVISED	9/2/58	440	16	JCS	JCS

1	CY-2416/U	NAVY MODEL		9/4/58
	RAK-4	TMC MODEL		
REQ. PER UNIT	MODEL	PROJECT NO.	ASS'Y. NO.	DATE

REQ. ITEM	PART NO.	DESCRIPTION	SYMBOL
THE TECHNICAL MATERIEL CORP. MAMARONECK, NEW YORK			
CABINET, ELECTRICAL EQUIPMENT			
TYPE & TEMPER		15 9/16/58	
HEAT TREAT. SPEC.			
FINISH & SPEC. NO.			
DRAWN		ELEC. DES. APP. MECH. DES. APP.	
CHECKED		FINAL APPROVAL	
		A-1524 F	