

IF IT IS FOUND DESIRABLE TO CHANGE ANY TOLERANCE OR OTHER DETAIL SPECIFIED ON THIS DRAWING NOTIFY THE PURCHASER PROMPTLY.

MAXIMUM ALLOWABLE TOLERANCES HAVE BEEN DETERMINED AND DEVIATIONS WILL BE CAUSE FOR REJECTION. REMOVE ALL BURRS AND SHARP EDGES

NOTICE TO PERSONS RECEIVING THIS DRAWING

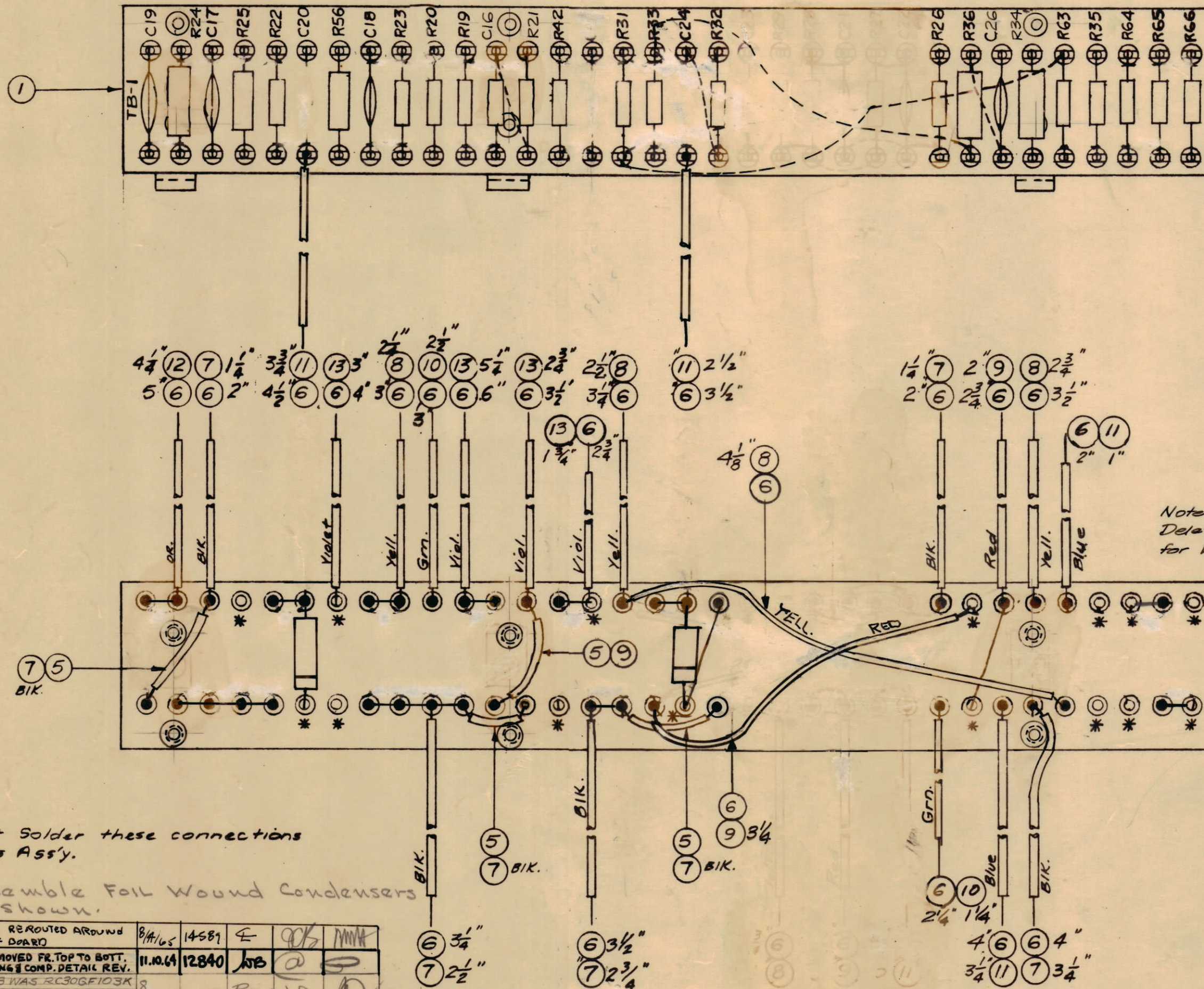
THE TECHNICAL MATERIEL CORPORATION claims proprietary right in the material disclosed herein. This drawing is issued in confidence for engineering information only and may not be re-produced or used to manufacture anything shown herein without permission from THE TECHNICAL MATERIEL CORPORATION to the user. This drawing is loaned for mutual assistance and is subject to recall at any time.

Property of:

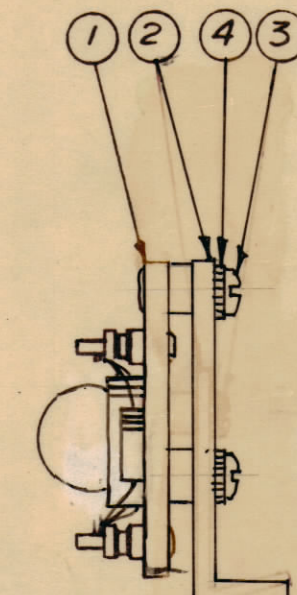
THE TECHNICAL MATERIEL CORPORATION
MAMARONECK, NEW YORK

Stamping to be 1/8" high black Gothic. Stamp before ass'y. of components.

All Jumpers



Note: Brackets, Item 2, Deleted from this view for Wiring Clarity.



2	36	CN-100-1	Capacitor, Fixed (.01)	C20 C24
1	35	RC42GF563K	Resistor, Fixed, Comp.	R56
X	34	BS-100	Solder, Soft	
1	33	RC20GF272K	Resistor, Fixed, Comp.	R65
1	32	RC20GF473K		R63
2	31	RC20GF681K		R66 R64
1	30	RC20GF392K		R35
1	29	RC42GF561K		R34
1	28	RC20GF223K		R42
1	27	RC20GF474K		R32
-	26	DELETED		-
-	25	DELETED		-
1	24	RC20GF123K		R26
1	23	RC32GF103K		R25
1	22	RC42GF473K		R24
1	21	RC20GF121K		R23

A-1575 F

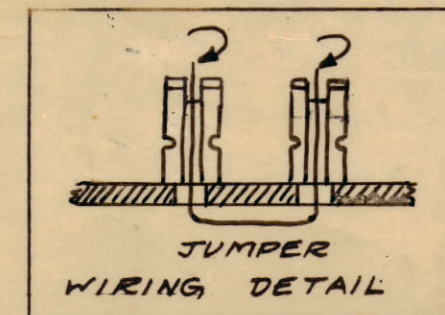
3	20	RC20GF104K		R20,22 33
1	19	RC20GF391K		R31
2	18	RC20GF203J	Resistor, Fixed, Comp.	R19 R21
1	17	CC-100-9	Capacitor, Fixed, Ceramic	C26
3	16	CC-100-16	Capacitor, Fixed, Ceramic	
1	15	RC32GF333K	Resistor, Fixed, Comp.	R36
1	14	CC26SL820J	Capacitor, Fixed, Ceramic	C16
12 3/4	13	PX-104-9-.034	Insulation, Sleeving (Size 20)	Violet
4 1/4	12	-8-		Orange
10 1/2	11	-8-		Blue
3 3/4	10	-4-		Green
5 1/4	9	-3-		Red
11 1/4	8	-2-		Yellow
14 1/2	7	PX-104-1-.034	Insulation, Sleeving (Size 20)	Black
X	6	WL-100-7	Wire, Buss (Size 22)	
X	5	WL-100-8	Wire, Buss (Size 24)	
6	4	LWE06MRN	Lockwasher, Ext.	
6	3	SCBS0632BNG	Screw, Machine	
3	2	MS-1321	Bracket, Angle, T.B.	
1	1	A-1571	Terminal Board No.1 Sub-Assy.	

REQ. ITEM	PART NO.	DESCRIPTION	SYMBOL
THE TECHNICAL MATERIEL CORP. MAMARONECK, NEW YORK			
TERMINAL BOARD NO.1			
FINAL ASS'Y & STAMPING			
DATE: 6/28/58		DRAWN: PPK	
CHECKED: [Signature]		ELECT. DES. APP. [Signature]	
MEAT TREAT. SPEC.:		FINAL APPROVAL:	
A-1575 F			

* = Do not Solder these connections on this Ass'y.

NOTE: Assemble Foil Wound Condensers As shown.

ISSUE	ITEM	CHANGED FROM	DATE	EN. NO.	UNDRFTS	CHECKER	ENG. APP.
F		IT 849 REROUTED AROUND DRILLING OF BOARD	8/1/55	14581	F	PKK	MMA
E	1	JUMPERS MOVED FR. TOP TO BOT. JUMP WIRING & COMP. DETAIL REV.	11.10.64	12840	NTB	[Signature]	[Signature]
D	1	ITEM 23 WAS RC30GF103K	8/15/55		R21	[Signature]	[Signature]
D	2	ITEM 15 WAS RC30GF333K					
D	3	ITEM 4 WAS LWE06MRC					
D	1	ITEM 3 WAS SCBS0632BNG					
C	2	C4 Deleted					
C	1	R42 WAS RC20GF222K	1/2/59	571	H	PKK	JBR
B	2	ON C20 & C24 DELINEATED GROUND DIRECTION. REMOVED JUMPER BETWEEN C21	10/10/58	484	WR	[Signature]	[Signature]
A	1	C20 & C24 PLACED ON BOTTOM OF BOARD. ITEM 36 (CN-100-1) ADDED FOR C20 & C24 - C20 & C24 WERE ITEM 16	9/10/58	449	K	PKK	[Signature]
-	-	NEW ASSY AS PER (SERIAL NO. 437)	8/28/58	437	K	PKK	[Signature]



TOLERANCES	SCALE:
ALL OTHERS: DEC. DIM. ± FRAC. DIM. ± ANGULAR DIM. ±	DRILL PUNCH, COMMERCIAL STOCK SIZES AND MANUFACTURERS TOLERANCES ARE NOT INCLUDED.

1	MSR-4			8-28-58
REQ. PER UNIT	MODEL	PROJECT NO.	ASSY. NO.	DATE
USED ON				