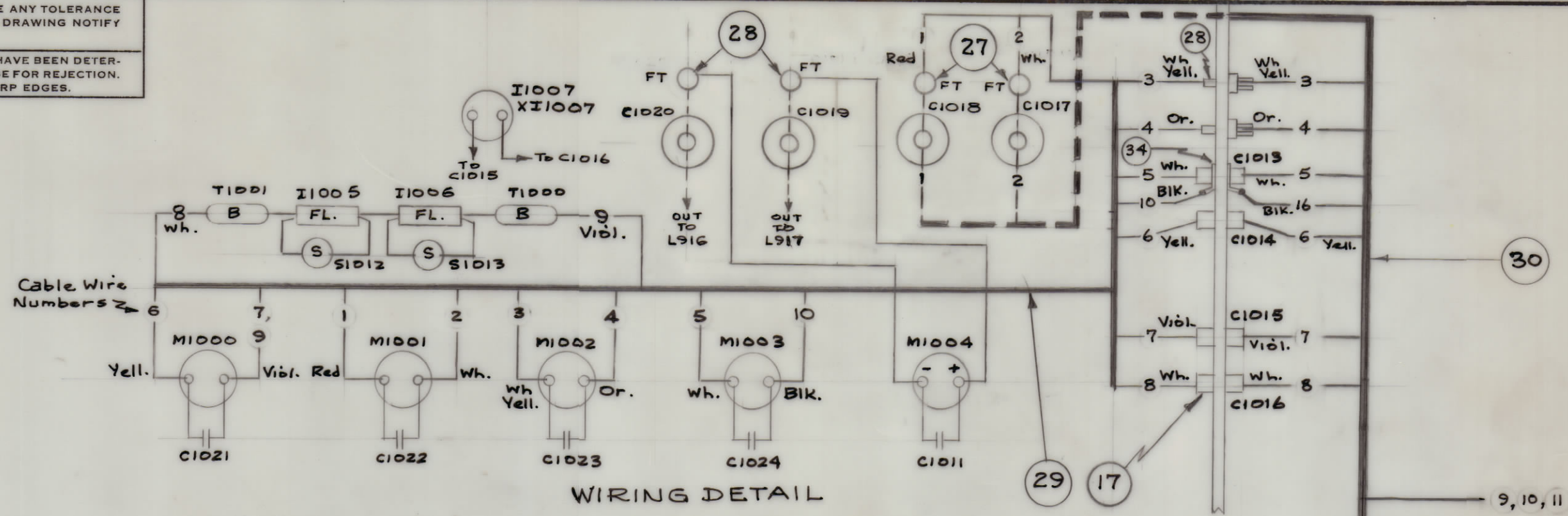
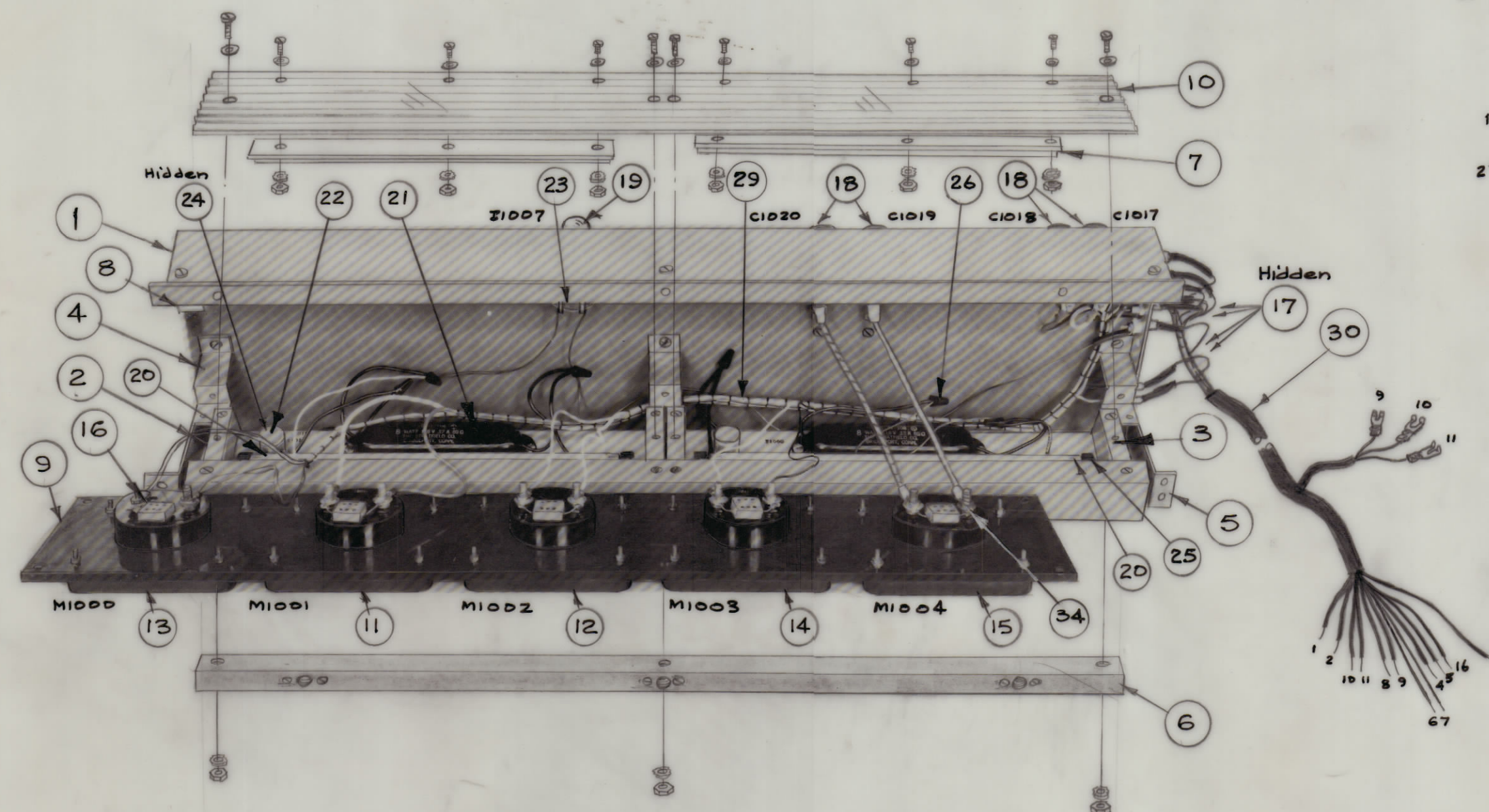


IF IT IS FOUND DESIRABLE TO CHANGE ANY TOLERANCE OR OTHER DETAIL SPECIFIED ON THIS DRAWING NOTIFY THE PURCHASER PROMPTLY.

MAXIMUM ALLOWABLE TOLERANCES HAVE BEEN DETERMINED AND DEVIATIONS WILL BE CAUSE FOR REJECTION. REMOVE ALL BURRS AND SHARP EDGES.



WIRING DETAIL



USE NPL-AX-108 FOR MTG. HARDWARE

NOTE - This Meter Box No Longer Used. Superseded by AX-173 for GPT-10K( ) 2 & Later Units.

REQ. ITEM	PART NO.	DESCRIPTION	SYMBOL																												
12	34	TE-104-5 Terminal, Locking																													
4	33	CA-409-40-2.00 Cable Ass'y., Jumper, 2" Lg.	White																												
1	32	CA-409-39-9.00 Cable Ass'y., Jumper, <sup>C1020 to M1004</sup>	White Black																												
1	31	CA-409-38-9.00 Cable Ass'y., Jumper, <sup>C1019 to M1004</sup>	White																												
1	30	CA-424 Cable Ass'y., Interconnect																													
1	29	CA-429 Cable Ass'y., Meter Box																													
4	28	TE-101-4 Feedthru																													
2	27	NS-118-3 Feedthru																													
9	26	NT-121-71B Nut, Wire																													
4	25	TS-141 Socket, Fl. Lamp <sup>XI1005 A,B</sup>	<sup>XI1006 A,B</sup>																												
2	24	TS-140 Socket, Starter	XI1012 XI1013																												
1	23	TS-136-7-F-5 Socket, Lamp	XI1007																												
2	22	PO-170 Starter, Fl. Lamp	S1012 S1013																												
2	21	PO-169 Ballast, Fl. Lamp	T1000 T1001																												
<b>A-1661</b>																															
2	20	BI-107 Lamp, Fluorescent	I1005 I1006																												
1	19	BI-105 Lamp, Incandescent	I1007																												
4	18	CC-109-38 Capacitor, Fixed, Ceramic																													
4	17	CK70A102M Capacitor, Fixed, Ceramic																													
5	16	CM30B102K Capacitor, Fixed, Mica																													
1	15	MR-126 Meter, PA Output	M1004																												
1	14	MR-120 Meter, PA Plate RF	M1003																												
1	13	MR-118 Meter, Fil. Primary	M1000																												
1	12	MR-117 Meter, PA Plate Current	M1002																												
1	11	MR-116 Meter, PA Screen Current	M1001																												
1	10	PX-467 Window																													
1	9	PX-451(LD-506) Panel, Meter																													
3	8	MS-1684 Bracket, Panel Support, Top																													
2	7	MS-1705 Bracket, Window																													
1	6	MS-1606 Support, Window Panel																													
2	5	MS-1578 Bracket, Meter Box.																													
3	4	MS-1554 Panel Support, Bottom																													
1	3	MS-1553(LD-545) Meter Light Chassis, Right																													
1	2	MS-1553(LD-539) Meter Light Chassis, Left																													
1	1	MS-1552 Meter Box (LD-540)																													
<table border="1" style="width: 100%;"> <thead> <tr> <th>REQ. ITEM</th> <th>PART NO.</th> <th>DESCRIPTION</th> <th>SYMBOL</th> </tr> </thead> <tbody> <tr> <td colspan="4" style="text-align: center;">THE TECHNICAL MATERIEL CORP. MAMARONECK, NEW YORK</td> </tr> <tr> <td colspan="4" style="text-align: center;">AX-108 ASSEMBLY (METER BOX ASS'Y.)</td> </tr> <tr> <td colspan="4" style="text-align: center;">16/29/59</td> </tr> <tr> <td colspan="2">TYPE &amp; TEMPER</td> <td>DRAWN</td> <td>ELEC. DES. APP. MECH. DES. APP.</td> </tr> <tr> <td colspan="2">HEAT TREAT. SPEC.</td> <td>CHECKED</td> <td>FINAL APPROVAL</td> </tr> <tr> <td colspan="2">FINISH &amp; SPEC. NO.</td> <td colspan="2" style="text-align: center;">A-1661</td> </tr> </tbody> </table>				REQ. ITEM	PART NO.	DESCRIPTION	SYMBOL	THE TECHNICAL MATERIEL CORP. MAMARONECK, NEW YORK				AX-108 ASSEMBLY (METER BOX ASS'Y.)				16/29/59				TYPE & TEMPER		DRAWN	ELEC. DES. APP. MECH. DES. APP.	HEAT TREAT. SPEC.		CHECKED	FINAL APPROVAL	FINISH & SPEC. NO.		A-1661	
REQ. ITEM	PART NO.	DESCRIPTION	SYMBOL																												
THE TECHNICAL MATERIEL CORP. MAMARONECK, NEW YORK																															
AX-108 ASSEMBLY (METER BOX ASS'Y.)																															
16/29/59																															
TYPE & TEMPER		DRAWN	ELEC. DES. APP. MECH. DES. APP.																												
HEAT TREAT. SPEC.		CHECKED	FINAL APPROVAL																												
FINISH & SPEC. NO.		A-1661																													

ISSUE	ITEM	CHANGED FROM	DATE	CH. NO.	DRAFTS	CHECKER	ENG. APP.
TOLERANCES							
SCALE: NONE				DRILL, PUNCH, COMMERCIAL STOCK SIZES AND MANUFACTURERS TOLERANCES ARE NOT INCLUDED.			

1	GPT-10K( )	AX-108	12-9-59
REQ. PER UNIT	MODEL	PROJECT NO.	DATE
USED ON			