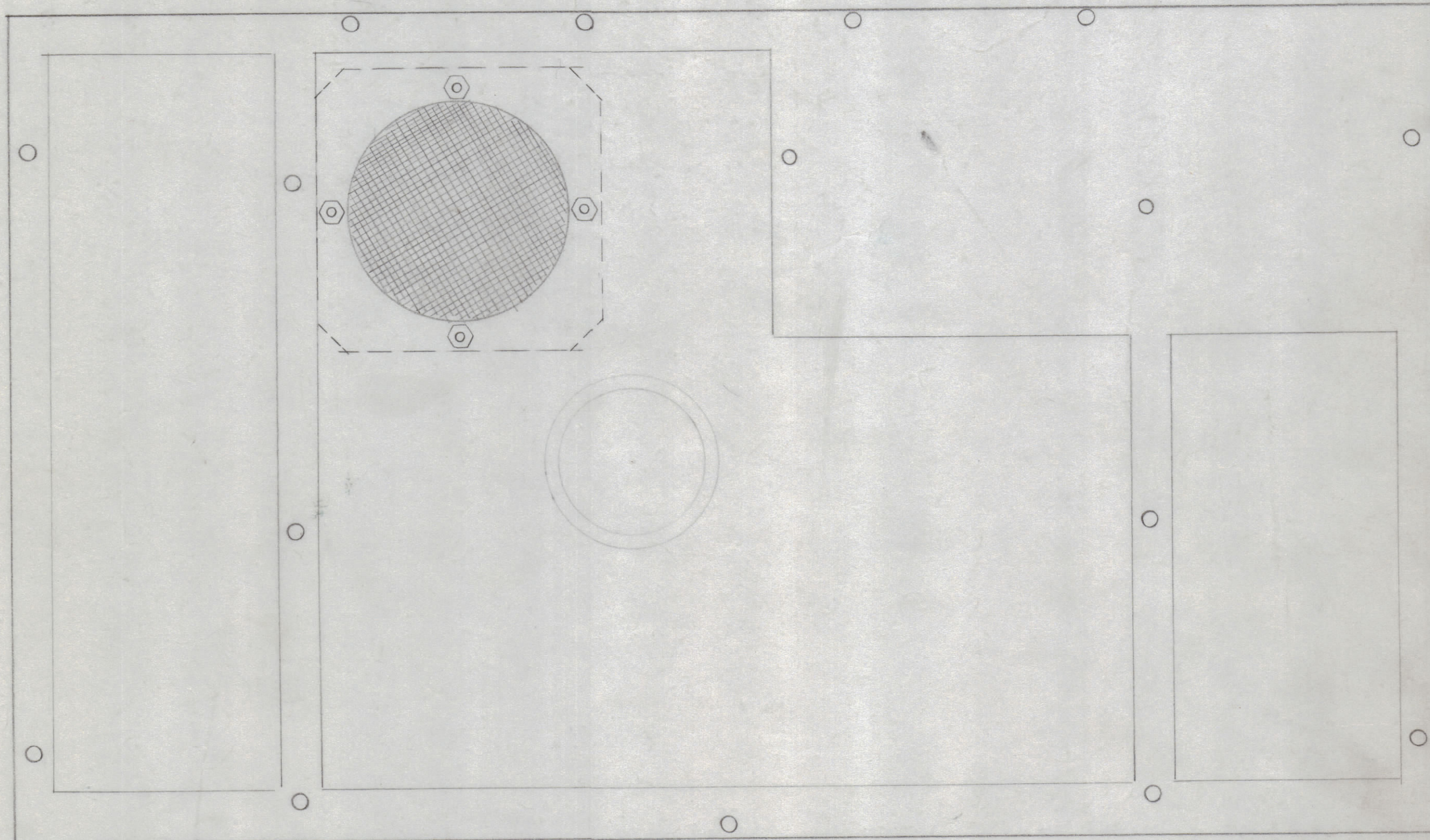
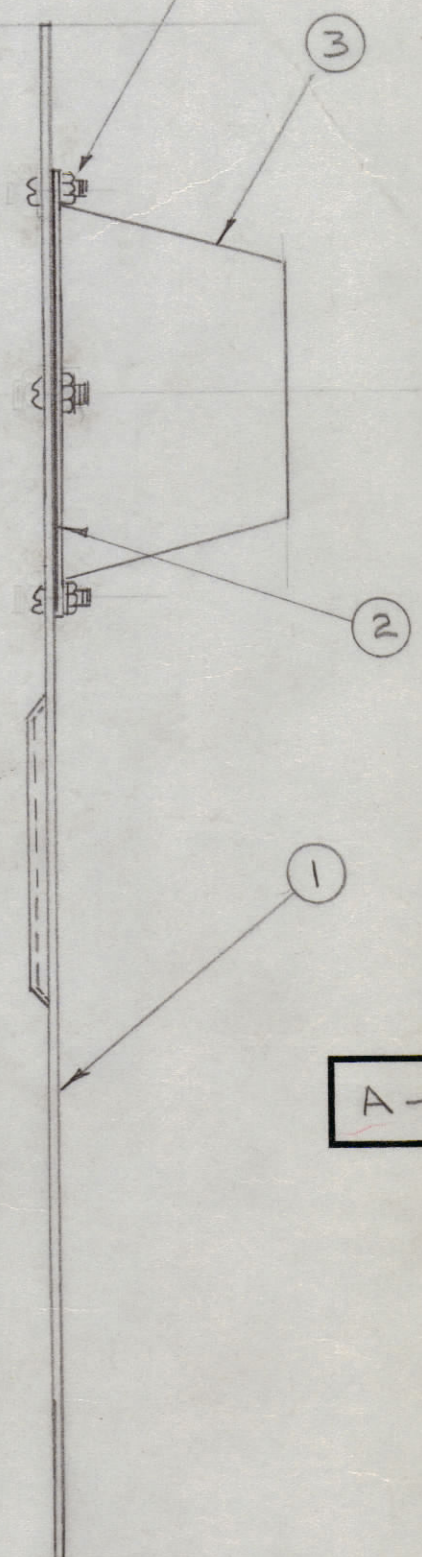


IF IT IS FOUND DESIRABLE TO CHANGE ANY TOLERANCE OR OTHER DETAIL SPECIFIED ON THIS DRAWING NOTIFY THE PURCHASER PROMPTLY.

MAXIMUM ALLOWABLE TOLERANCES HAVE BEEN DETERMINED AND DEVIATIONS WILL BE CAUSE FOR REJECTION. REMOVE ALL BURRS AND SHARP EDGES.



90 W/ 200' Nut
 4 5 6



A-1691

4	6	NTH0632 BNS	NUT, HEXAGON
4	5	LW06G HRC	LOCKWASHER, EXT.
4	4	SCBS0632BNG	SCREW, MACHINE
1	3	PX-439	FLUE, EXHAUST
1	2	MS-1760	COVER, SCREENING
1	1	MS-1639	COVER, TOP

REQ.	ITEM	PART NO.	DESCRIPTION	SYMBOL
THE TECHNICAL MATERIEL CORP. MAMARONECK, NEW YORK				
STOCK SIZE				
TOP COVER ASSY RF SHIELD				
MATERIAL		WEIGHT PER PC.		
TYPE & TEMPER				
DRAWN		ELEC. DES. APP.		MECH. DES. APP.
HEAT TREAT. SPEC.				
CHECKED		FINAL APPROVAL		
FINISH & SPEC. NO.				

ISSUE	ITEM	CHANGED FROM	DATE	CH. NO.	DRAFTS	CHECKER	ENG. APP.
TOLERANCES		SCALE:					
ALL OTHERS	DEC. DIM. ± FRAC. DIM. ± ANGULAR DIM. ±	DRILL, PUNCH, COMMERCIAL STOCK SIZES AND MANUFACTURERS TOLERANCES ARE NOT INCLUDED.					

1	GPT-16K	TRFB-1	5-5-99
REQ. PER UNIT	MODEL	PROJECT NO.	DATE
USED ON			