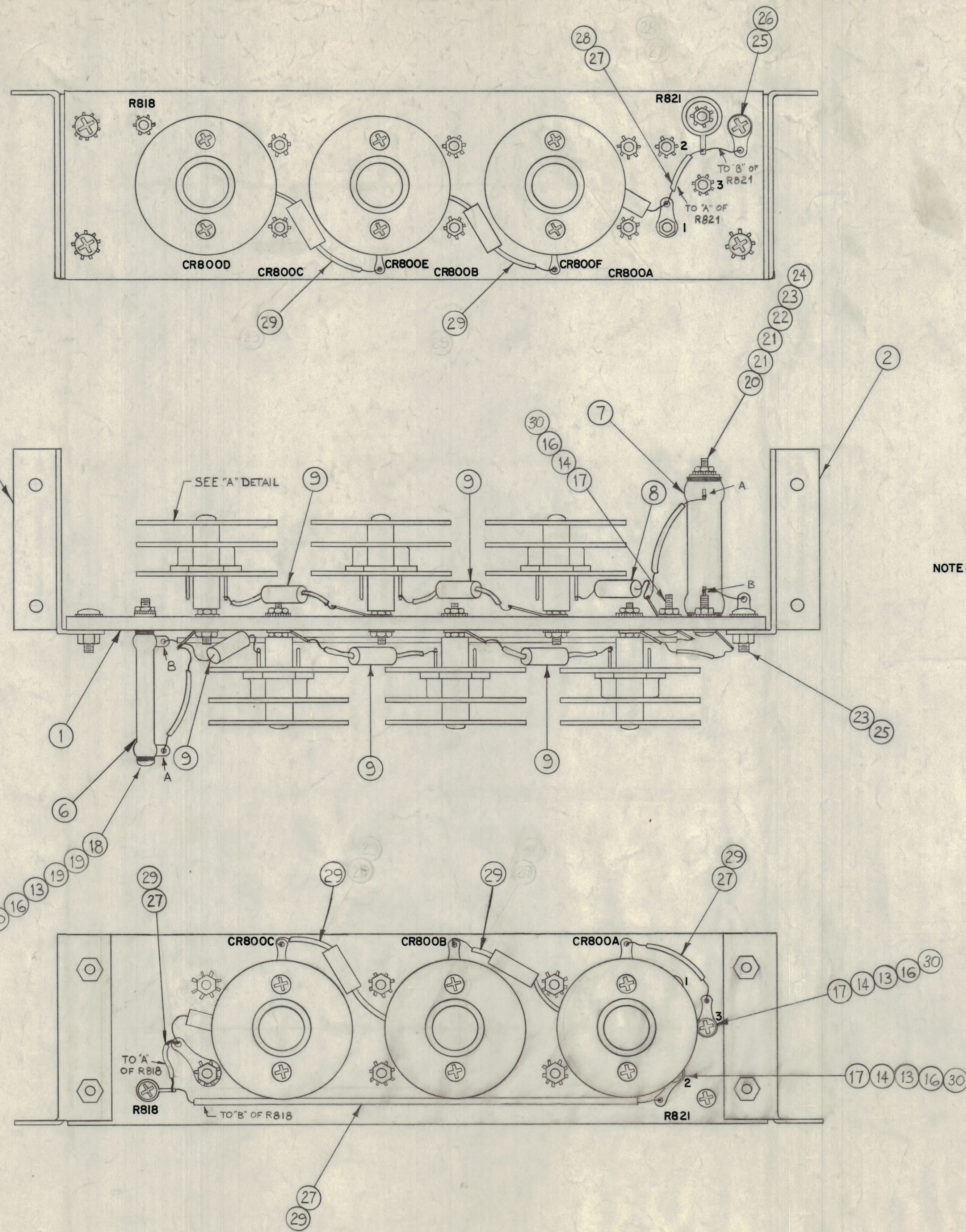


NOTICE TO PERSONS RECEIVING THIS DRAWING

THE TECHNICAL MATERIEL CORPORATION claims proprietary right in the material disclosed herein. This drawing is issued in confidence for engineering information only and may not be reproduced or used to manufacture any part shown hereon without permission from THE TECHNICAL MATERIEL CORPORATION to the user. This drawing is loaned for mutual assistance and is subject to recall at any time.

Property of:  
THE TECHNICAL MATERIEL CORPORATION  
MAMARONECK, NEW YORK



NOTE: SOME STAMPING MOVED FOR PURPOSE OF CLARITY.

REQ. ITEM	PART NO.	DESCRIPTION	SYMBOL
X 31	BS100	SOLDER, TIN ALLOY	
10 30	FW06HBN	WASHER, FLAT	
19 29	PX 104-6-034	SLEEVING, INSULATION	BLUE
2 28	PX 104-2-034	SLEEVING, INSULATION	YELLOW
5 27	WL 100-6	WIRE BUSS-BAR, # 20	
1 26	TE 104-3	TERMINAL, LOCKING, # 8	
4 25	SCBP0832BN8	SCREW, MACHINE, 8-32 X 1/2 Lg.	
1 24	NTH0832BN10	HEX., NUT	
5 23	LWEO8MRN	LOCKWASHER, EXTERNAL	
1 22	FW08HBN	WASHER, FLAT	
2 21	WA-102-5	WASHER, FIBER, SHOULDER	
1 20	SCBP0832BN40	SCREW, MACHINE, 8-32 X 2 1/2 Lg.	
2 19	WA-102-4	WASHER, FIBER, SHOULDER	
1 18	SCBP0632BN36	SCREW, MACHINE, 6-32 X 2 1/4 Lg.	
3 17	SCBP0632BN8	SCREW, MACHINE, 6-32 X 1/2 Lg.	
28 16	NTH0632BN8	HEX., NUT	
7 15	LWIOGMRN	LOCKWASHER, INTERNAL	
9 14	TE 104-2	TERMINAL, LOCKING # 6	
14 13	LWEO6MRN	LOCKWASHER, EXTERNAL	
12 12	SCBP0632BN30	SCREW, MACHINE, 6-32 X 1 3/4 Lg.	
24 11	TE 117-11	SPACER, 3/8 D X 1/4 Lg.	
12 10	TE 117-13	SPACER, 3/8 D X 1/2 Lg.	
5 9	RC42GF101J	RESISTOR, COMP, 100, 2W	R823, 4, 5, 6, 7
1 8	RC42GF221J	RESISTOR, COMP, 220, 2W	R822
1 7	RW 110-43	RESISTOR, W.W., 100K, 20W	R821
1 6	RW 109-32	RESISTOR, W.W., 5K, 10W	R818
1 5	VR 100S/6-1150-5	DIODE, ZENER, MATCHED SET OF 6	CR-800A, B, C, D, E, F
18 4	MS 1498	PLATE, CONNECTOR	
1 3	MS 1528	BRACKET, MOUNTING, LEFT	
1 2	MS 1527	BRACKET, MOUNTING, RIGHT	
1 1	PX 448 (LD-566)	BOARD, MOUNTING, LETTERED	

SYM	ZONE	DESCRIPTION	DATE	CH. NO.	DRAFTS	CHECKER	ENG. APP.
D		ADD 17, 31, CHGD RES TOL. FR K TO J AT 843 & DELE DECIMAL AT 28 & 29	11/3/66	17092	RME	[Signature]	[Signature]
C		"A" DETAIL REVISED; ITEM 30 ADDED; ITEM 12 WAS SCBP0632BN28	6-23-66	16397	WHD	[Signature]	[Signature]
B		AC88 ITEM 15 WAS VR-100 S/6-1150-5, NOW CLARIFIED	5-14-65	9037	[Signature]	[Signature]	[Signature]
A		CR800D Item 27 Deleted From Resistors; CR800A Added	12-1-61	5983	[Signature]	[Signature]	[Signature]

UNLESS OTHERWISE SPECIFIED:  
DIMENSIONS ARE IN INCHES  
TOLERANCES ON FRACTIONS ± 1/64 DECIMALS ± .005 ANGLES ± 1/2°

SCALE

MAXIMUM ALLOWABLE TOLERANCES HAVE BEEN DETERMINED AND ANY DEVIATIONS WILL BE CAUSE FOR REJECTION. REMOVE ALL BURRS & SHARP EDGES

REQ. PER UNIT	MODEL	SECTION	ASSY. NO.	DATE	TYPE & TEMPER.	HEAT TREAT. SPEC.	FINISH & SPEC. NO.	ELEC. DES. APP.	MECH. DES. APP.	SHEET OF
1	GPT-10K			3-9-61						A 1698

STOCK SIZE	MATERIAL	THE TECHNICAL MATERIEL CORP. MAMARONECK, NEW YORK
		AX-126 ASSY. (ZENER DIODE BOARD)
		MAF [Signature] [Signature]
		DRAWN CHECKED FINAL APPROVAL
		16 A 1698 D

A 1698 D