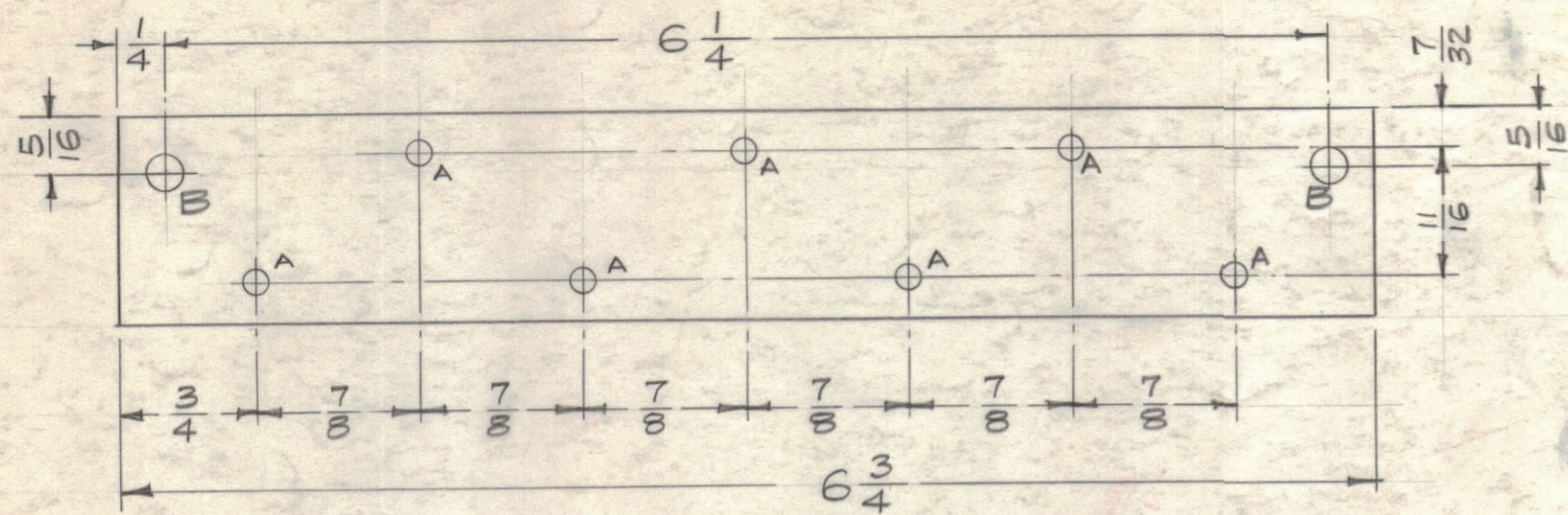


IF IT IS FOUND DESIRABLE TO CHANGE ANY TOLERANCE OR OTHER DETAIL SPECIFIED ON THIS DRAWING NOTIFY THE PURCHASER PROMPTLY.

MAXIMUM ALLOWABLE TOLERANCES HAVE BEEN DETERMINED AND DEVIATIONS WILL BE CAUSE FOR REJECTION. REMOVE ALL BURRS AND SHARP EDGES.

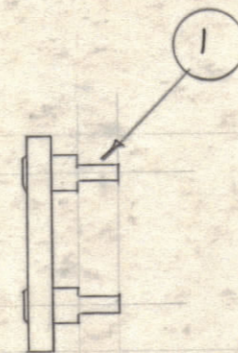


A - No. 32 Dr. (.116D) 7 Req.

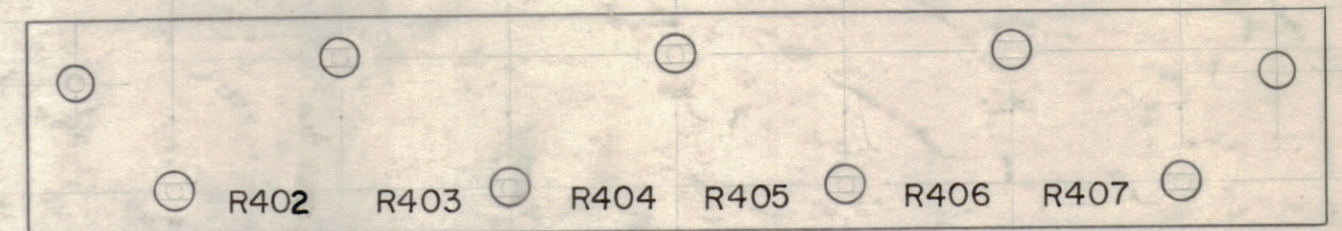
B -  $\frac{3}{16}$  (.187) D, 2 Req.

MATERIAL -  $\frac{1}{8}$  THK. XXXP PHENOLIC, NATURAL

STAGE 1 MACHINING



STAGE 3 MECH. ASS'Y.



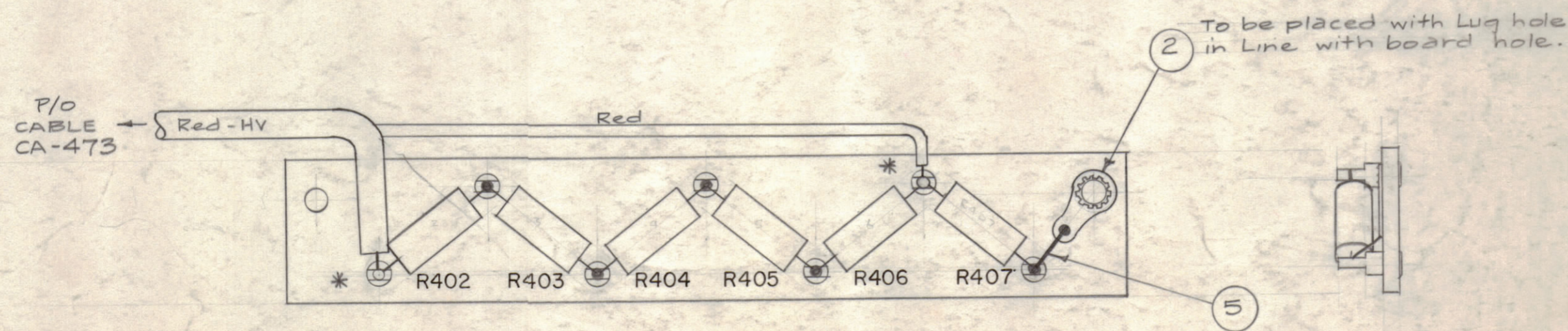
All Lettering  $\frac{1}{8}$  high Black Gothic.

MARKING PROCESS; AS PER TMC SPECIFICATION S-722

NOTE: APPLY FUNGUS PROOFING PER TMC S-113 AFTER MARKING

STAGE 2 LETTERING

A-1714 E



Notes -  
 1. Cable, CA-473, Shown for Ref. Only.  
 2. Solder All Connections except those with Cable Tie-points. (\*) These to be soldered upon Ass'y. of Board into Unit.

STAGE 4 FINAL ASS'Y.

R402, 403, 404, 405, 406

X	6	BS-100	Solder, Soft	
X	5	WL-100-7	Wire, Buss (#22)	
1	4	RC42GF224J	Resistor, Fixed, Comp.	R407
5	3	RC42GF206J	Resistor, Fixed, Comp.	
1	2	TE-104-2	Lug, Solder (#6)	
7	1	TE-160	Lug, Terminal	

E	CHG'D 'K' TO 'J' ON IT 4	12.2.66	17256	RME		
D	S-113 NOTE ADDED	4.13.64	11186	WJB		
C	STAGES 2&3 WERE REVERSED	3-15-63	8533	RC		
B	R402 WAS R401 (TYPO ERROR)	2-4-60	1838	WJB		
A	ITEM 3 WAS RC42GF205J	8/7/53	1167	WJB		

ISSUE	ITEM	CHANGED FROM	DATE	CH. NO.	DRAFTS	CHECKER	ENG. APP.
TOLERANCES		SCALE: FULL (Do Not Scale)					
ALL OTHERS	DEC. DIM. $\pm$	DRILL, PUNCH, COMMERCIAL STOCK SIZES AND MANUFACTURERS TOLERANCES ARE NOT INCLUDED.					
	FRAC. DIM. $\pm$ 1/64						
	ANGULAR DIM. $\pm$						

1	PS-5	PAL-1K	6-15-59
REQ. PER UNIT	MODEL	PROJECT NO.	DATE
		ASSY. NO.	

REQ. ITEM	PART NO.	DESCRIPTION	SYMBOL
See Stage 1		THE TECHNICAL MATERIEL CORP. MAMARONECK, NEW YORK	
STOCK SIZE		TERMINAL BOARD, ALL STAGES (PS-5)	
See Stage 1		16 4/15/59	
MATERIAL		WEIGHT PER PC.	
See Stage 1			
TYPE & TEMPER		DRAWN	ELED. DES. APP. MECH. DES. APP.
HEAT TREAT. SPEC.		CHECKED	FINAL APPROVAL
FINISH & SPEC. NO.		A-1714 E	