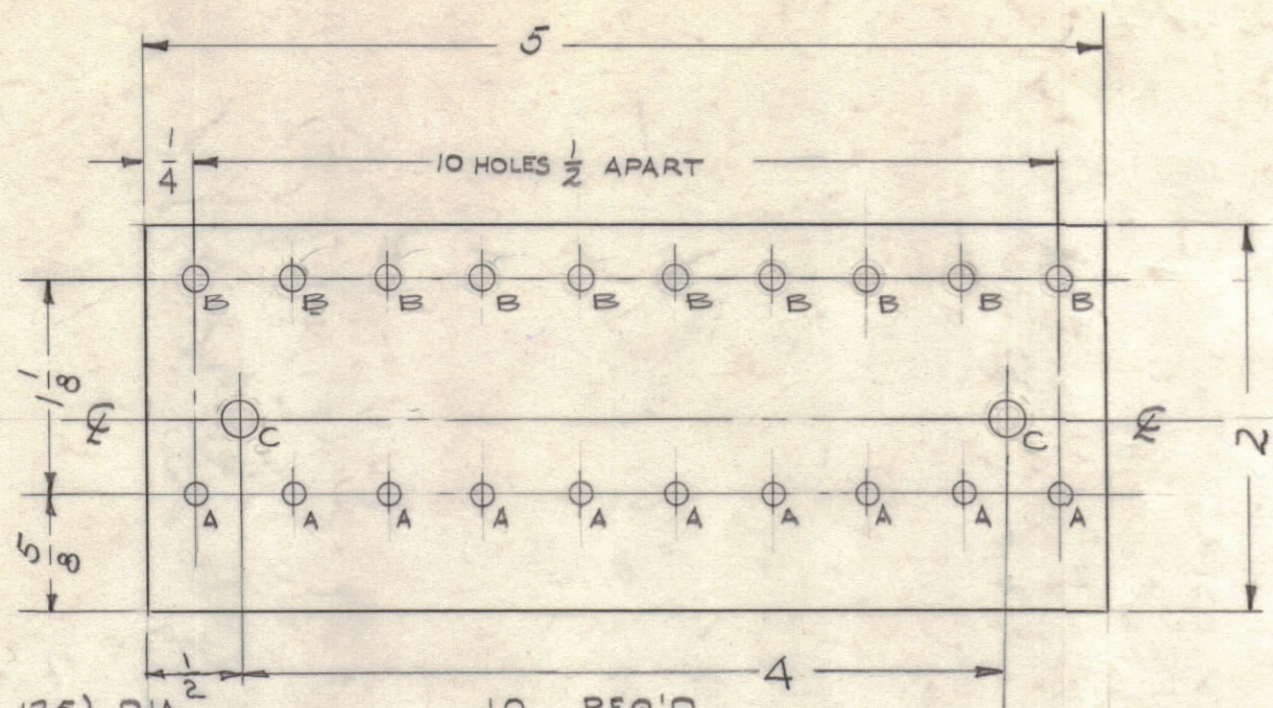


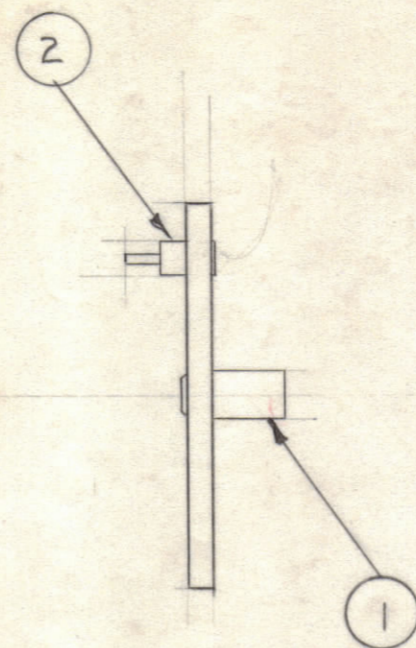
IF IT IS FOUND DESIRABLE TO CHANGE ANY TOLERANCE OR OTHER DETAIL SPECIFIED ON THIS DRAWING NOTIFY THE PURCHASER PROMPTLY.

MAXIMUM ALLOWABLE TOLERANCES HAVE BEEN DETERMINED AND DEVIATIONS WILL BE CAUSE FOR REJECTION. REMOVE ALL BURRS AND SHARP EDGES.

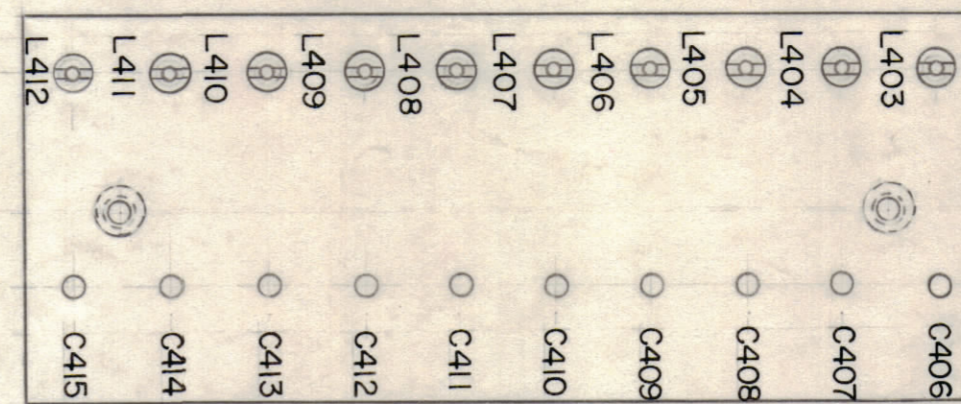


A - $\frac{1}{8}$ (.125) DIA. 10 REQ'D.
 B - (.113) DIA. 10 REQ'D.
 C - (.189) DIA. 2 "

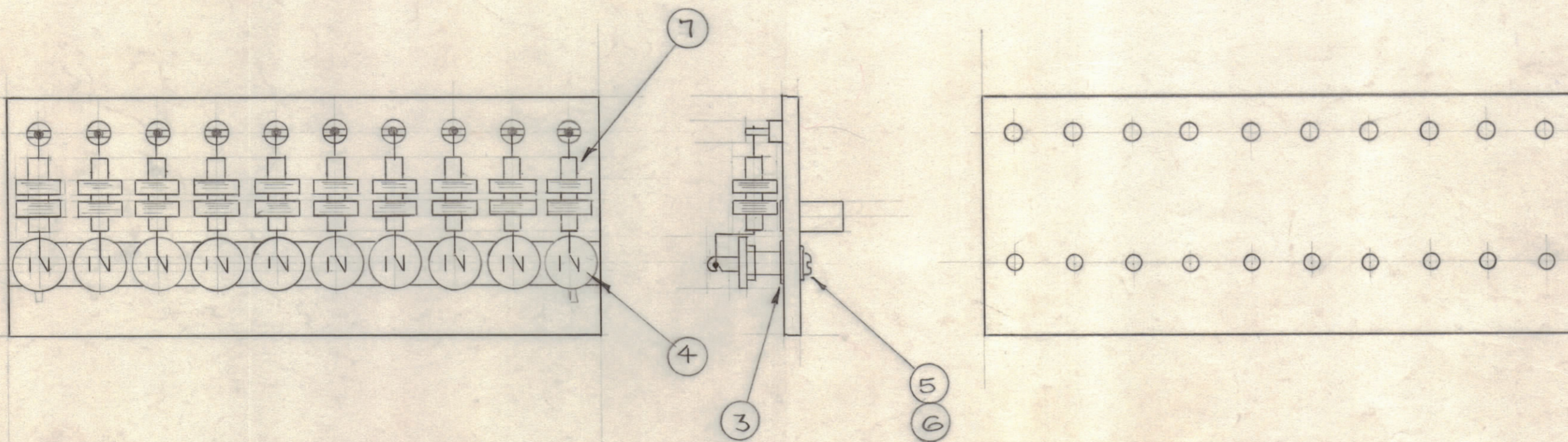
MACHINING - STAGE 1



(MECHANICAL ASS'Y.) STAGE 2



STAMPING STAGE 3



(ELECTRICAL ASS'Y) STAGE 4

A-1722

REQ.	ITEM	PART NO.	DESCRIPTION	SYMBOL
X	8	BS-100	SOLDER, SOFT	
10	7	CL-100-5	CHOKE, RF	
10	6	LWS03MRN	LOCKWASHER, SPLIT	
10	5	SCBS0348BN4	SCREW, MACHINE	
10	4	CB21QW102K	CAPACITOR, FIXED MICA, BOTTOM TYPE	
1	3	MS-1810	GROUND STRAP	
10	2	TE-109-3	SPLIT, TERMINAL LUG	
2	1	TE-108-13	STAND OFF	

REQ.	ITEM	PART NO.	DESCRIPTION	SYMBOL
1/8			THE TECHNICAL MATERIEL CORP. MAMARONECK, NEW YORK	
STOCK SIZE			FILTER BOARD	
PHENOLIC			RTS-2	
MATERIAL WEIGHT PER PC.				
XXXXP			JORILLO	
TYPE & TEMPER.			DRAWN ELEC. DES. APP. MECH. DES. APP.	
HEAT TREAT. SPEC.			CHECKED FINAL APPROVAL	
NATURAL			A-1722	
FINISH & SPEC. NO.				

ISSUE	ITEM	CHANGED FROM	DATE	CH. NO.	DRAFTS	CHECKER	ENG. APP.
TOLERANCES							
ALL OTHERS				SCALE: FULL (Do Not Scale)			
DEC. DIM. ±		DRILL, PUNCH, COMMERCIAL STOCK					
FRAC. DIM. ± 1/64		SIZES AND MANUFACTURERS					
ANGULAR DIM. ±		TOLERANCES ARE NOT INCLUDED.					

1	RTS-2	PROJECT NO.	ASSY. NO.	DATE
REQ. PER UNIT	MODEL	PROJECT NO.	ASSY. NO.	DATE
USED ON				