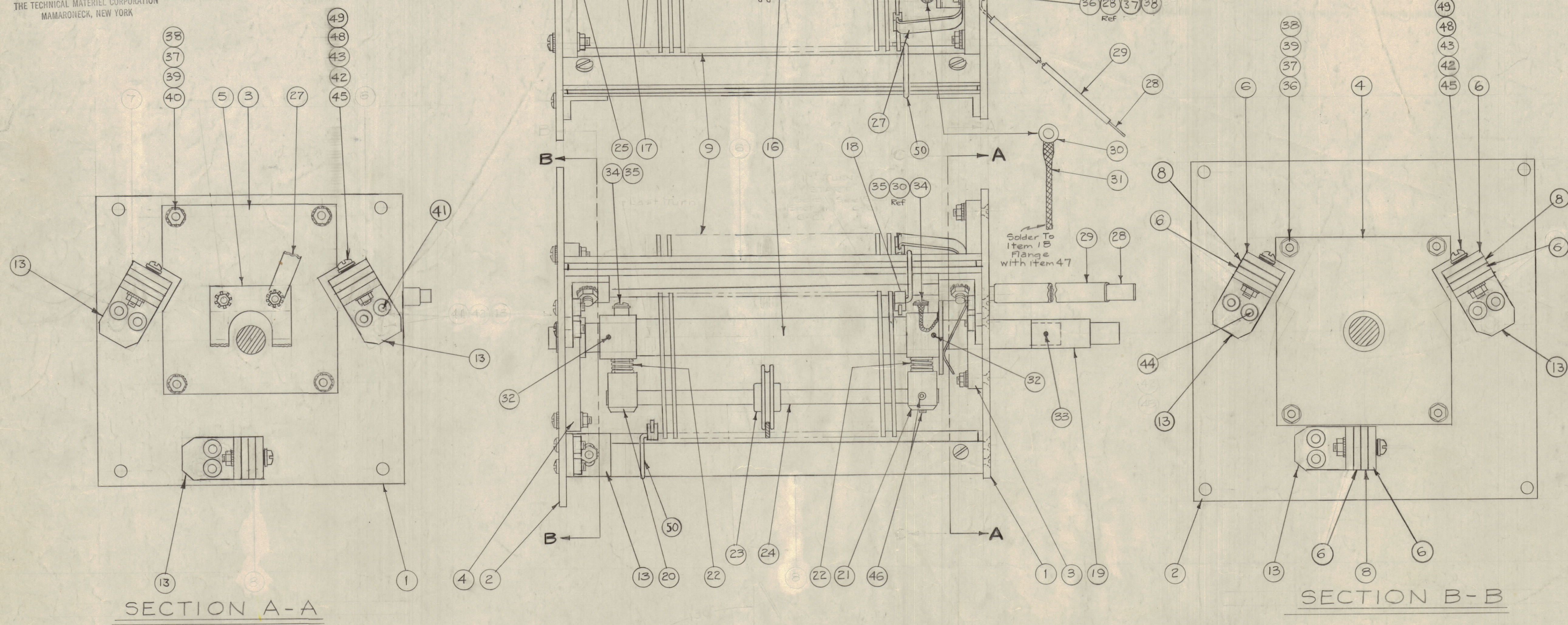


IF IT IS FOUND DESIRABLE TO CHANGE ANY TOLERANCE OR OTHER DETAIL SPECIFIED ON THIS DRAWING NOTIFY THE PURCHASER PROMPTLY.  
 MAXIMUM ALLOWABLE TOLERANCES HAVE BEEN DETERMINED AND DEVIATIONS WILL BE CAUSE FOR REJECTION. REMOVE ALL BURRS AND SHARP EDGES

**NOTICE TO PERSONS RECEIVING THIS DRAWING**

THE TECHNICAL MATERIEL CORPORATION claims proprietary right in the material disclosed hereon. This drawing is issued in confidence for engineering information only and may not be reproduced or used to manufacture anything shown hereon without permission from THE TECHNICAL MATERIEL CORPORATION to the user. This drawing is loaned for mutual assistance and is subject to recall at any time.

Property of:  
 THE TECHNICAL MATERIEL CORPORATION  
 MAMARONECK, NEW YORK



2	50	FP201	RETAINER, COIL
6	49	FW08HBN	WASHER, FLAT
6	48	WA109-43	WASHER, FIBER
X	47	BS 100	Solder, Soft
3	46	SLHC0632SR3	Setscrew, 6-32 St. Steel
6	45	SCBP0832BN12	Screw, Machine
6	44	SCBP0832BN7	Screw, Machine
6	43	NTH0832BN10	Nut, Hex.
6	42	LW08BMEN	Lockwasher, Ext.
6	41	SCFP0832BN7	Screw, Machine
4	40	SCFP0632BN10	Screw, Machine
8	39	FW06HBN	Washer, Flat
10	38	NTH0632BN8	Nut, Hex.
10	37	LW06BMEN	Lockwasher, Ext.
6	36	SCBP0632BN10	Screw, Machine
2	35	FW04HBN	Washer, Flat
2	34	SCBP0446BN6	Screw, Machine
1	33	PN59-062-8	Pin, Spring, .062 D X 1/2 Lg
2	32	PN59-062-12	Pin, Spring, .062 D X 3/4 Lg
2	31	WL 103-2	Shield, Flex., 1/8 WIDE
1	30	TE 113-120	Lug, Terminal
5 1/2	29	PX 370-4-7	Insulation, Teflon (Size 4)
1	28	MS-203-7-7.12	Lead, Connecting, 1/4 Wide
	27		
	26		
1	25	BB-118-9	Bearing, Flanged
1	24	PM 691RF5.625S	Shaft, Contact Wheel (5/8 Lg)
1	23	PM 251	Wheel, Contact
2	22	SP 149-1	Spring, Compression
1	21	PM 484	Rod, Connecting
1	20	PX 395	Rod, Connecting, Phenolic
1	19	PM 578	Shaft, Coupling
1	18	PM 474	Collar, Flanged, Drive Shaft
1	17	PM 577	Collar, Drive Shaft
1	16	PX 480	Shaft, Drive
	15		
	14		
6	13	MS 1881	BRACKET, COIL MTG.
	12		
	11		
	10		
1	9	A3645	COIL ASSEMBLY
3	8	PX 1270	SPACER, COIL
7		DELETE	
6	6	PX 1269	SUPPORT, COIL
1	5	MS 457	Contact, Spring
1	4	PX 482	Insulator, Rear
1	3	PX 483	Insulator, Front, Contact
1	2	MS 1816	Plate, Coil Mtg., Rear
1	1	MS 1815	Plate, Coil Mtg., Front

A-1769 F

F	REQ'D ITEM 42 & 43 WAS 18	5-5-58	21800	DDL	DW	AB	
F	ITEM 6 WAS PX478-3-ITEM 7 DEL. ITEM 8 WAS PX 478-1						
E	ADD LOCK TO M/L/D	5-18-58	20833	EE	g	g	
D	IT. 13 WAS MS 1881-4	1-5-67	17059	RME	COB	ZB	
C	WAS: IT. 22 WAS SP49; IT. 33 WAS PN59-062-10; DESG. (UPMATE); IT. 43 WAS NTH08-32BN10; IT. 45 WAS SCBP0832BN12; 50 IMPROVED; REVISED ON IT. 24, 21, 22, 20, 18, 17, 16, 15, 14, 13, 12, 11, 10, 9, 8, 7, 6, 5, 4, 3, 2, 1.	3-10-65	13670	J.F.	POB	POB	
B	IT. 22 WAS SP-1169, HDN. UPDATED ITS 10, 11, 12, 14, 15 REPLAC. BY IT. 19 IT. 3 WAS CL-114-4, IT. 5 WAS REQ. IT. 4-B & 4-S ADDED, IT. 24, 21 DEL. SECTION C-C DELETED	7-29-64	11970	WJB	POB	WJB	
A	ITEM 24 WAS PM-459-5.625S	3/31/64	11148	A.M.	J.S.G.	AB	
ISSUE	ITEM	CHANGED FROM	DATE	CN. NO.	DRAFTS	CHECKER	ENG. APP.
TOLERANCES							
SCALE: Do Not Scale							
ALL	DEC. DIM. ±	DRILL, PUNCH, COMMERCIAL STOCK					
OTHERS	FRACTIONAL DIM. ±	SIZES AND MANUFACTURERS					
	ANGULAR DIM. ±	TOLERANCES ARE NOT INCLUDED.					

1	AC106	TU-2A			
1	AC-106	TU-2(ATS-2)		10-9-59	
REQ PER UNIT	MODEL	PROJECT NO.	ASSY. NO.	DATE	
		USED ON			

THE TECHNICAL MATERIEL CORP. MAMARONECK, NEW YORK			
AC-106 ASS'Y. (COIL, RF, TUNING)			
TYPE & TEMPER	16109/59	16	
DRAWN		ELEC. DES. APP.	MECH. DES. APP.
CHECKED		FINAL APPROVAL	
HEAT TREAT. SPEC.			
FINISH & SPEC. NO.			

A-1769 F