

IF IT IS FOUND DESIRABLE TO CHANGE ANY TOLERANCE OR OTHER DETAIL SPECIFIED ON THIS DRAWING NOTIFY THE PURCHASER PROMPTLY

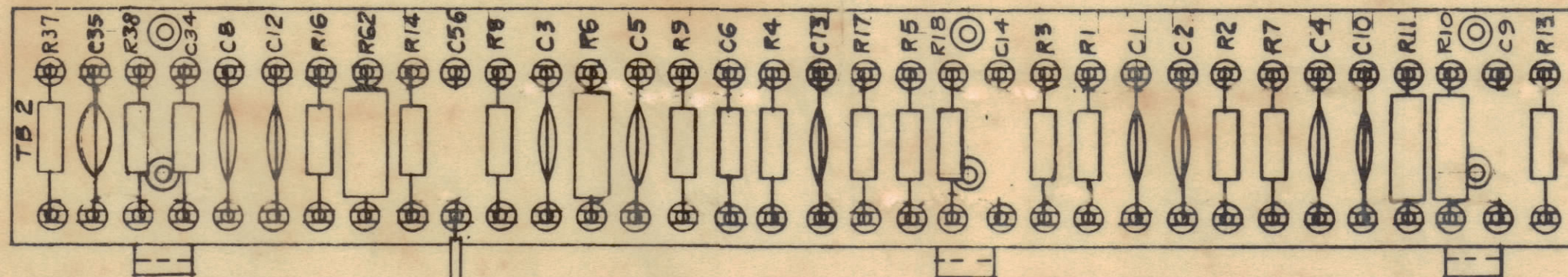
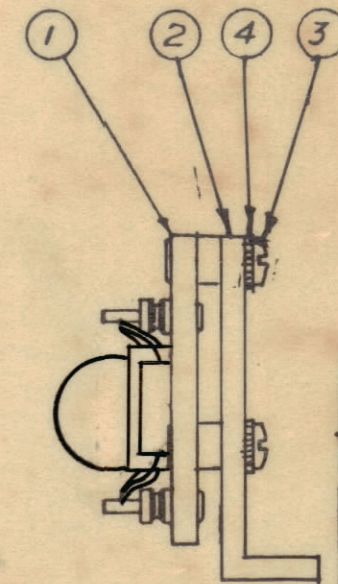
MAXIMUM ALLOWABLE TOLERANCES HAVE BEEN DETERMINED AND DEVIATIONS WILL BE CAUSE FOR REJECTION REMOVE ALL BURRS AND SHARP EDGES

NOTICE TO PERSONS RECEIVING THIS DRAWING

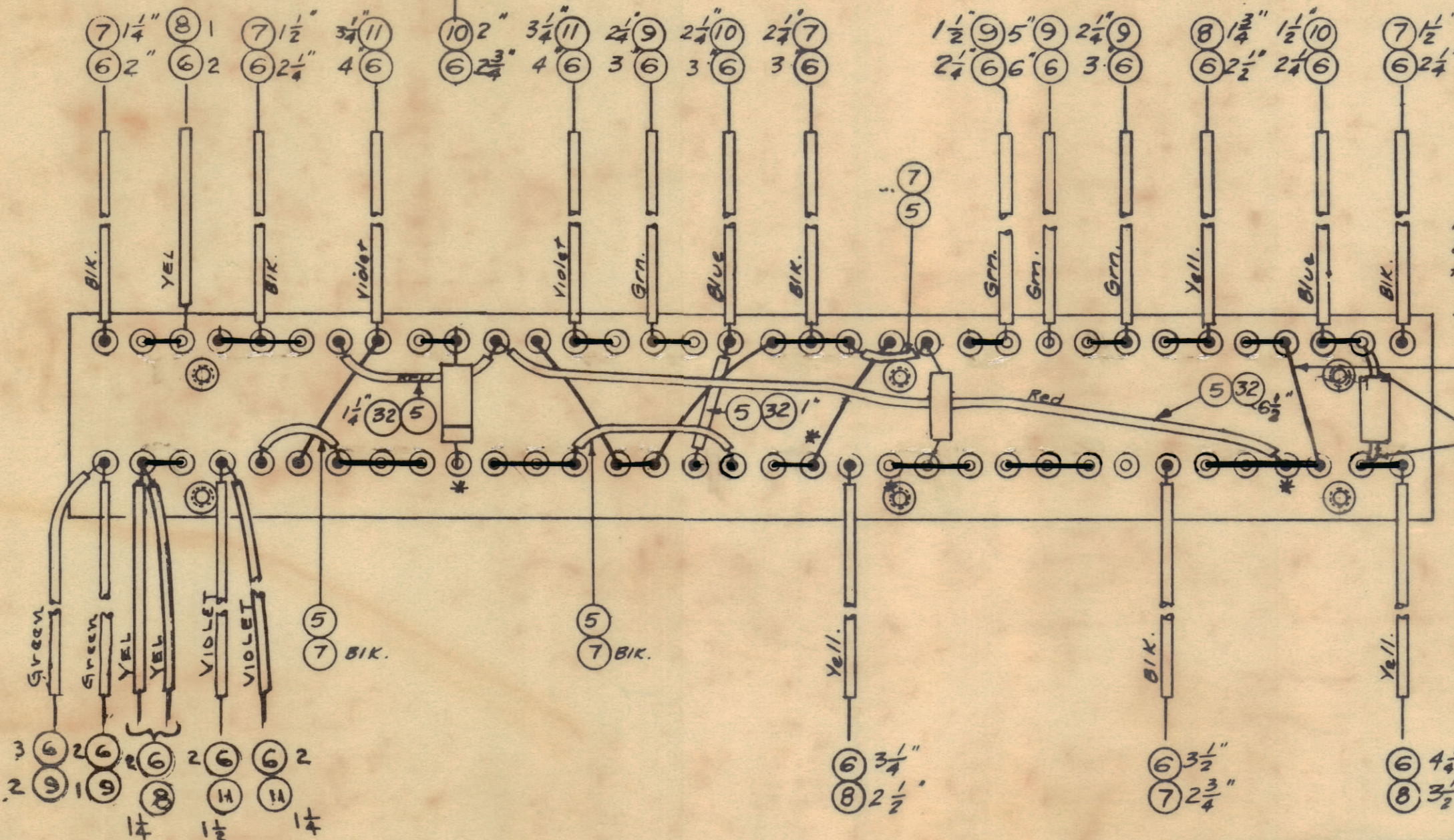
THE TECHNICAL MATERIEL CORPORATION claims proprietary right in the material disclosed herein. This drawing is issued in confidence for engineering information only and may not be reproduced or used to manufacture anything shown hereon without permission from THE TECHNICAL MATERIEL CORPORATION to the user. This drawing is loaned for mutual assistance and is subject to recall at any time.

Property of:  
THE TECHNICAL MATERIEL CORPORATION  
MAMARONECK, NEW YORK

Stamping to be 1/8" high black Gothic - Stamp before ass'y. of components.



36	CC-100-28	CAPACITOR FIXED (.1)	C35
2	35	CN-100-1	CAPACITOR, FIXED (.01)
1	34	RC206F384K	RESISTOR, FIXED, COMP
1	33	CC-101-4	Capacitor, Fixed, Ceramic
8 1/2	32	PX-104-3-.034	Insulation, Sleeving (Size 20)
X	31	BS-100	Solder, Soft
1	30	RC42GF223K	Resistor, Fixed, Comp.
1	29	RC20GF121K	
1	28	RC20GF104K	
1	27	RC20GF106K	
1	26	RC20GF155K	
1	25	RC20GF103K	
1	24	RC20GF154K	
2	23	RC32GF223K	
2	22	RC20GF222K	
1	21	RC20GF471K	

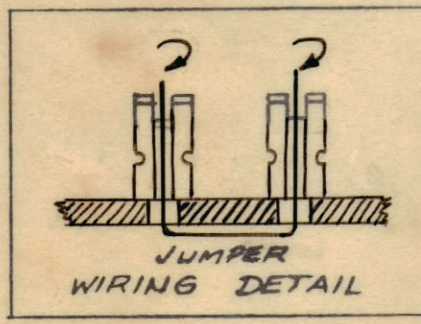


Note: Brackets, item 2, Deleted from this view for Wiring Clarity.

5 All Jumpers

C1, 2, 3, 4, 5, 8, 10, 12,

\* - Do Not Solder These Connections on This Ass'y.  
NOTE:  
Assemble Foil Wound Condensers AS SHOWN.



1	20	RC32GF683K		R6
1	19	RC20GF331K		R5
1	18	RC32GF223K		R4
2	17	RC20GF474K		R3, R2
1	16	RC20GF104K	Resistor, Fixed, Comp.	R1
1	15	CC215L300J	Capacitor, Fixed, Ceramic	C34
1	14	CN108C1003J	Capacitor, Fixed, Mylar	C14
1	13	CC-100-9	Capacitor, Fixed, Ceramic	C13
8	12	CC-100-16	Capacitor, Fixed, Ceramic	
6 1/2	11	PX-104-9-.034	Insulation, Sleeving (Size 20)	Violet
9 1/2	10	PX-104-6-.034		Blue
13 3/4	9	PX-104-4-.034		Green
10 3/4	8	PX-104-2-.034		Yellow
9	7	PX-104-1-.034	Insulation, Sleeving (Size 20)	Black
6 1/2	6	WL-100-7	Wire, Buss (Size 22)	
X	5	WL-100-8	Wire, Buss (Size 24)	
6	4	LWEO6MRC	Lockwasher, Ext.	
6	3	SCB506328C6	Screw, Machine	
3	2	MS-1321	Bracket, Angle, T.B.	
1	1	A-1572	Terminal Bd. No. 2 Sub-Ass'y.	

A-1790 A

B	2	JUMPERS MOVED FR. TOP TO BOT. JUMP. WIRING & COMP. DETAIL REV.	11.10.64	12840	hrs	@	
A	2	ITEM 20 WAS RC30GF683K	8-24-60	2501	RL	PCB	HL
	1	ITEM 18+23 WERE RC30GF223K					
ISSUE	ITEM	CHANGED FROM	DATE	CH. NO.	DRAFTS	CHECKER	ENG. APP.
TOLERANCES		SCALE:					
ALL OTHERS	DEC. DIM. ±	DRILL PUNCH, COMMERCIAL STOCK SIZES AND MANUFACTURERS TOLERANCES ARE NOT INCLUDED.					
	FRAC. DIM. ±						
	ANGULAR DIM. ±						

1	MSR-32			10/26/59
REQ PER UNIT	MODEL	PROJECT NO.	ASSY. NO.	DATE
USED ON				

REQ. ITEM	PART NO.	DESCRIPTION	SYMBOL
THE TECHNICAL MATERIEL CORP. MAMARONECK, NEW YORK			
STOCK SIZE			
TERMINAL BOARD NO. 2			
FINAL ASS'Y. & STAMPING			
MATERIAL WEIGHT PER PC.			
TYPE & TEMPER			
HEAT TREAT. SPEC.			
FINISH & SPEC. NO.			
DRAWN		SEC. DES. APP.	MECH. DES. APP.
CHECKED		FINAL APPROVAL	
A-1790 A			