

IF IT IS FOUND DESIRABLE TO CHANGE ANY TOLERANCE OR OTHER DETAIL SPECIFIED ON THIS DRAWING NOTIFY THE PURCHASER PROMPTLY.

MAXIMUM ALLOWABLE TOLERANCES HAVE BEEN DETERMINED AND DEVIATIONS WILL BE CAUSE FOR REJECTION. REMOVE ALL BURRS AND SHARP EDGES.

WINDING

46 TURNS, CLOSE WOUND OF (ITEM 5)
(WI-127-14)

FABRICATION

- 1 ~ BUILD UP FERRAMIC CORE (ITEM 4) WITH TAPE (ITEM 3) TO 3/4" DIA.
- 2 ~ PRESS FIT CORE INTO COIL FORM (ITEM 2) LEAVE 3/4" SPACE EACH END OF CORE.
- 3 ~ ASSEMBLE INSERTS (ITEM 1) INTO COIL FORM AS SHOWN. ASSEMBLE SCREWS (ITEM 7) AS SHOWN.
- 4 ~ WIND 46 TURNS OF WIRE (ITEM 5) ON COIL FORM (ITEM 2), START WINDING 1-1/8 FROM END.
- 5 ~ SOLDER WIRE ENDS TO INSERTS (ITEM 1)

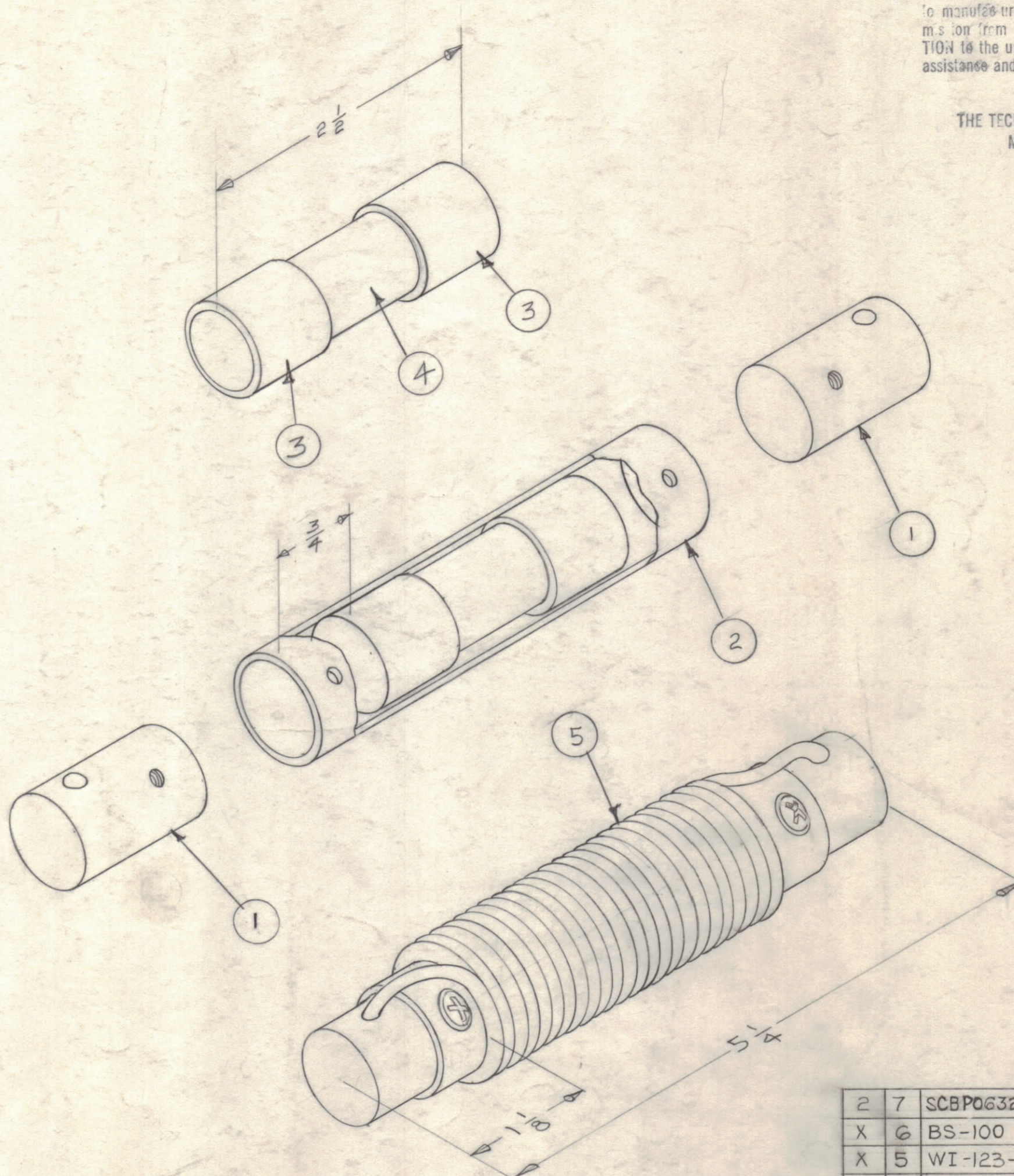
TEST DATA

L ~ MIN. 40 UHY
L ~ MAX. 50 UHY
Q ~ 15 OR GREATER
F ~ 2.5 MC
TEST ON BOONTON "Q" METER,
MODEL 160 A OR EQUIV.

NOTICE TO PERSONS RECEIVING THIS DRAWING

THE TECHNICAL MATERIEL CORPORATION claims proprietary right in the material disclosed hereon. This drawing is issued in confidence for engineering information only and may not be reproduced or used to manufacture anything shown hereon without permission from THE TECHNICAL MATERIEL CORPORATION to the user. This drawing is loaned for mutual assistance and is subject to recall at any time.

Property of:
THE TECHNICAL MATERIEL CORPORATION
MAMARONECK, NEW YORK



A-1826 D

2	7	SCBPO632BN4	SCREW, MACHINE	
X	6	BS-100	SOLDER, SOFT	
X	5	WI-123-14	WIRE, MAGNET, FORMEX	
1	4	CI112Q2-2R5L	CORE, FERRAMIC	
X	3	TA-101-3	TAPE, GLASS 3/4"	
1	2	CF-127-4000	COIL FORM	
2	1	PM-560	INSERT, LINE FILTER COIL	
REQ.	ITEM	PART NO.	DESCRIPTION	SYMBOL
THE TECHNICAL MATERIEL CORP. MAMARONECK, NEW YORK				
STOCK SIZE				
AC-111 Assy (PA TRANSFORMER)				
MATERIAL		WEIGHT PER PC.		
TYPE & TEMPER				
DRAWN		ELEC. DES. APP.		MECH. DES. APP.
HEAT TREAT. SPEC.		CHECKED		FINAL APPROVAL
A-1826 D				

D	ITEM 4 WAS CI112Q2R5-L	3-2575	21226	G.D.L.	Ch	Ch	
C	NOTE 4. WAS WIND 23 TURNS	1-15-68	18719	H.S.	FB	FB	
B	ITEM (7) WAS SCBPO632BN4						
B	ITEM (5) WAS WI-127-14	6-20-63	9354	W.P.			
B	ITEM (3) WAS TA-101-4						
A	ITEM 4 WAS CI-112-2R5-L	4/26/60	2199	W.P.	W.P.	W.P.	
A	ITEM 7 WAS SCBPO63B04						
ISSUE	ITEM	CHANGED FROM	DATE	CH. NO.	DRAFTS	CHECKER	ENG. APP.
TOLERANCES		SCALE:					
ALL OTHERS	DEC. DIM. ±	DRILL, PUNCH, COMMERCIAL STOCK SIZES AND MANUFACTURERS TOLERANCES ARE NOT INCLUDED.					
	FRAC. DIM. ± 1/64						
	ANGULAR DIM. ±						

3	GPT-40K	AP-102		2/29/60
REQ. PER UNIT	MODEL	PROJECT NO.	ASSY. NO.	DATE
USED ON				