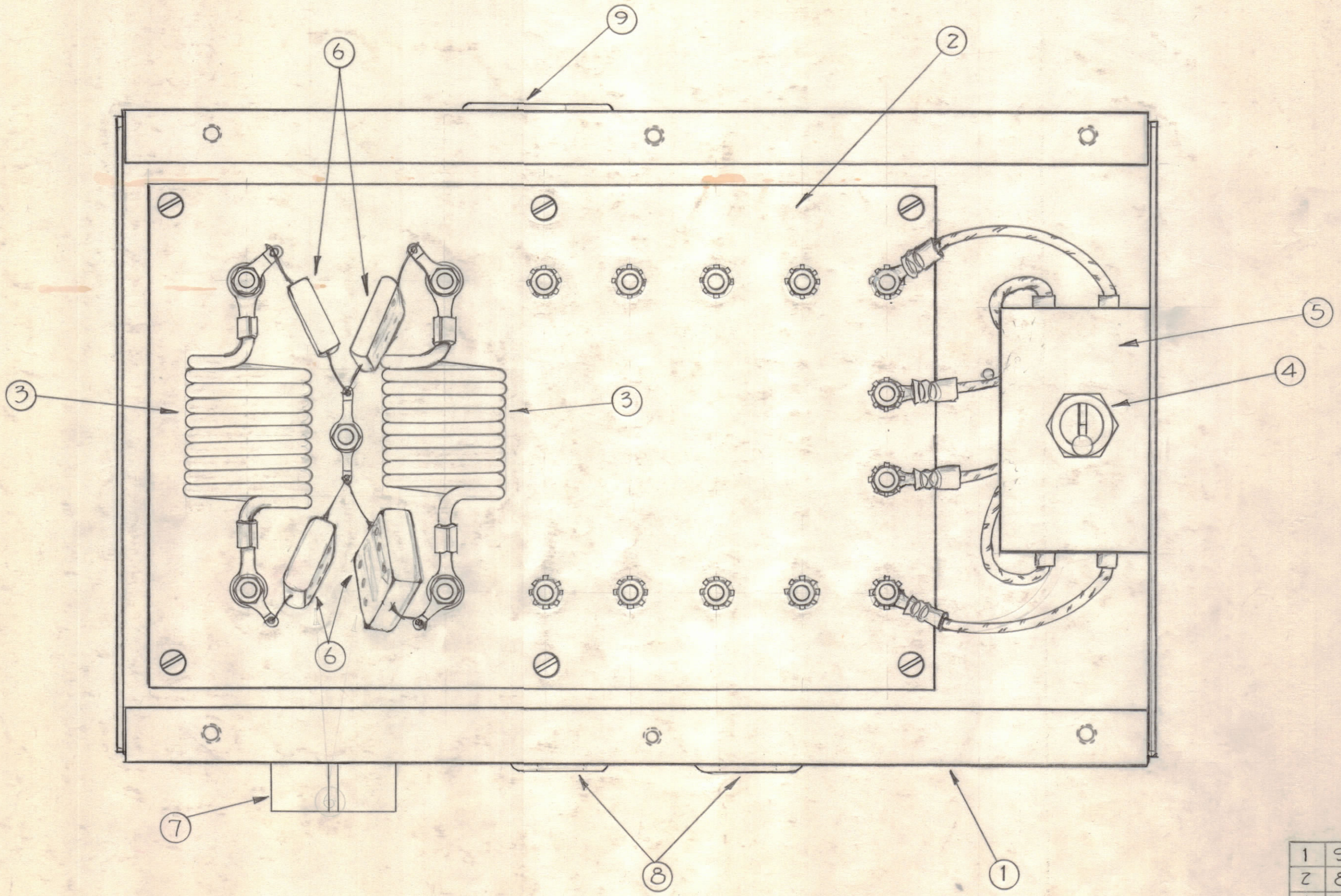


NOTICE TO PERSONS RECEIVING THIS DRAWING

THE TECHNICAL MATERIEL CORPORATION claims proprietary right in the material disclosed herein. This drawing is issued in confidence for engineering information only and may not be reproduced or used to manufacture anything shown herein without permission from THE TECHNICAL MATERIEL CORPORATION to the user. This drawing is loaned for mutual assistance and is subject to recall at any time.

Property of:  
THE TECHNICAL MATERIEL CORPORATION  
MAMARONECK, NEW YORK



1	9	EY-10Z-18	GROMMET, ELASTIC	
2	8	EY-10Z-15	GROMMET, ELASTIC	
1	7	PO-175	CONNECTOR, SQUEEZE 3/4"	
4	6	CM35B103K	CAPACITOR, FIXED, MICA	C546, C547 C548, C549
1	5	MS-1924	BRACKET, AC SWITCH	
1	4	ST-104	SWITCH, TOGGLE DPST	SS01
2	3	CL-120-1	REACTOR, 3HRY	L501 L502
1	2	A-1844	TERM. BD, POWER INPUT	
1	1	MS-1922	CHASSIS, RF FILTER	

REQ. ITEM	PART NO.	DESCRIPTION	SYMBOL
THE TECHNICAL MATERIEL CORP. MAMARONECK, NEW YORK			
POWER INPUT ASSEMBLY			
STOCK SIZE			
MATERIAL			
TYPE & TEMPER			
HEAT TREAT. SPEC.			
FINISH & SPEC. NO.			
		DRAWN: <i>D. J. Man</i> CHECKED: <i>Five</i>	ELEC. DES. APP.: <i>P.A.</i> MECH. DES. APP.: <i>[Signature]</i> FINAL APPROVAL: <i>[Signature]</i>
		A-184Z	

ISSUE	ZONE	DESCRIPTION	DATE	CH. NO.	DRAFTS	CHECKER	ENG. APP.
TOLERANCES			SCALE:				
DEC. DIM. ±			MAXIMUM ALLOWABLE TOLERANCES HAVE BEEN DETERMINED AND ANY DEVIATIONS WILL BE CAUSE FOR REJECTION.				
FRAC. DIM. ±			REMOVE ALL BURRS AND SHARP EDGES				
ANGULAR DIM. ±							

REQ PER UNIT	MODEL	SECTION	ASSY. NO.	DATE
1	RAK-9			5-31-60