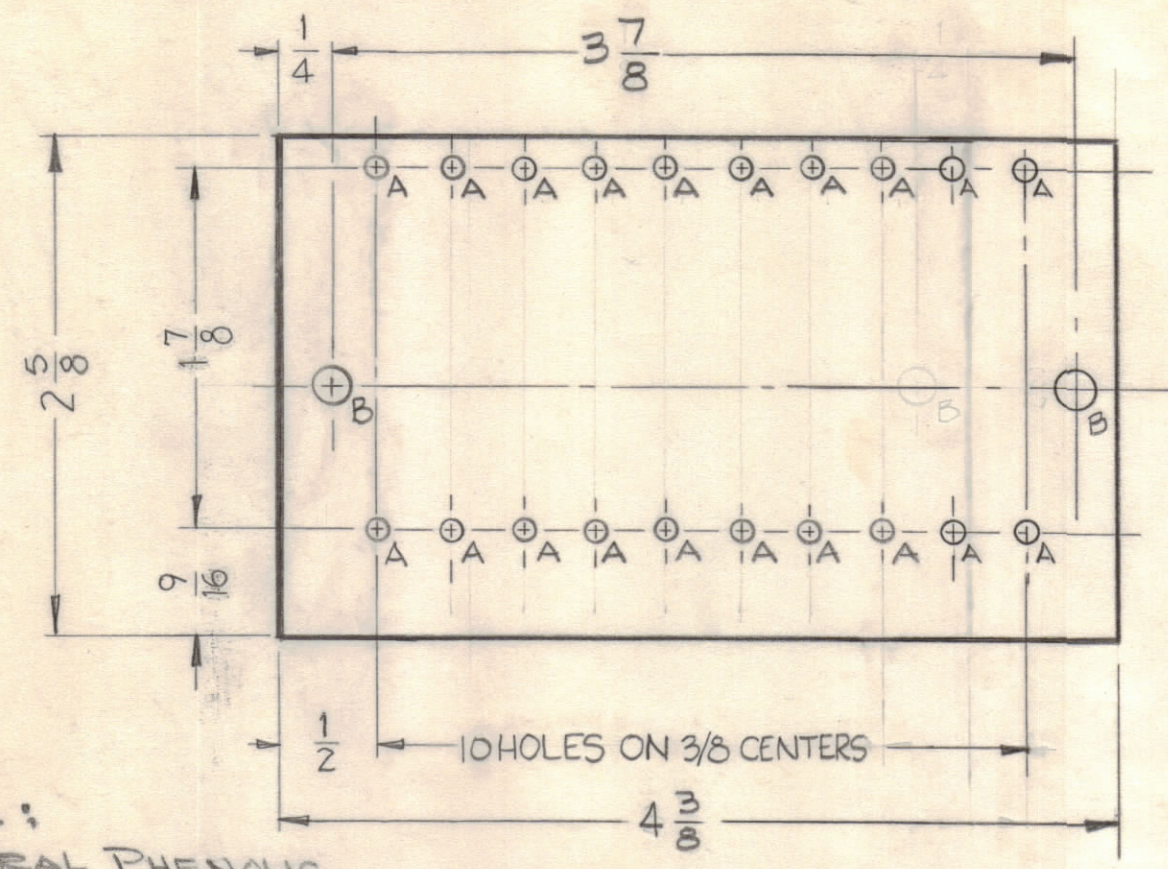
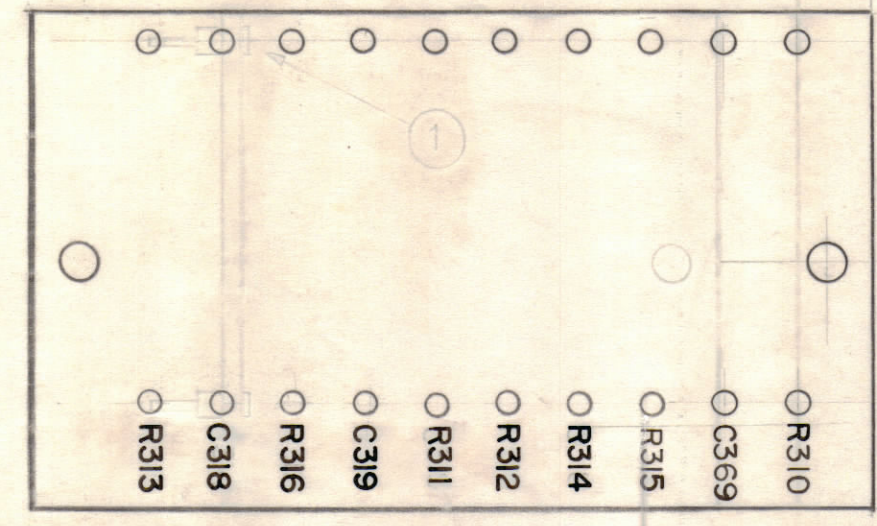


HOLES REQ  
 A ~ #2.9(114)MM DR. 20  
 B ~ 3/16(.187)DIA 2



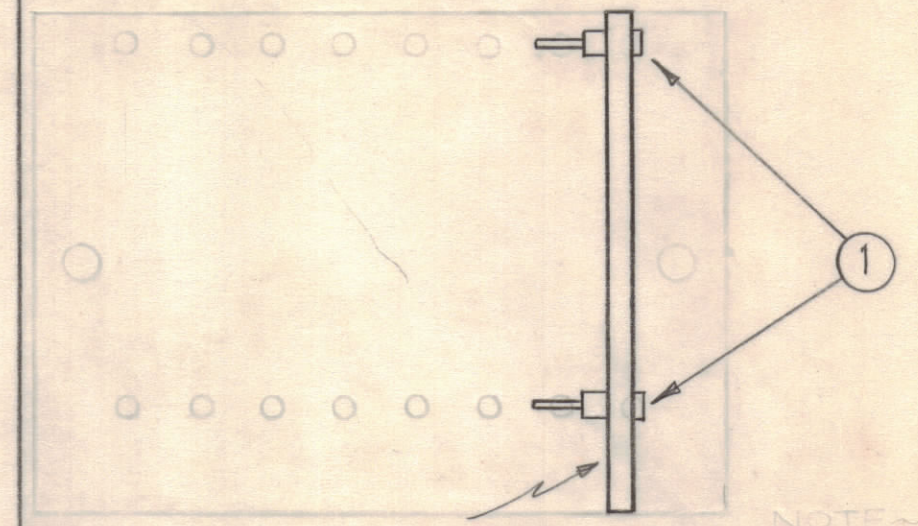
MATERIAL:  
 1/8 NATURAL PHENOLIC  
 XXXP

STAGE-1 MACHINING (A-1857-1)



NOTE~  
 ALL LETTERING  
 1/8 HIGH BLACK  
 GOTHIC.

STAGE-2 LETTERING (A-1857-2)

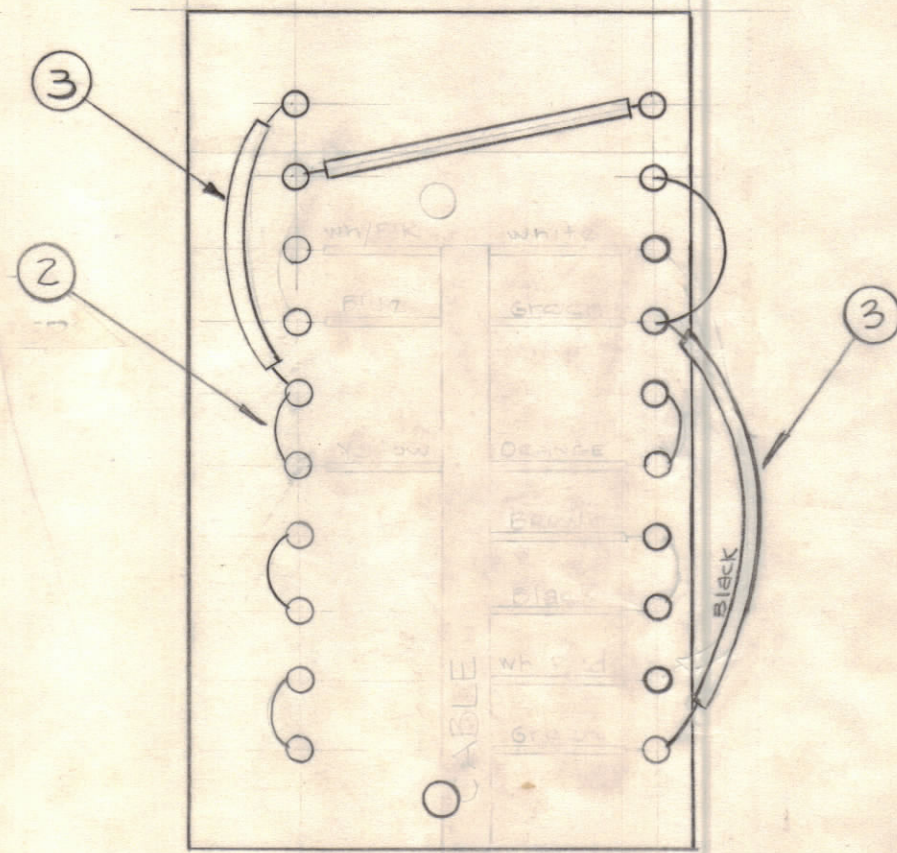
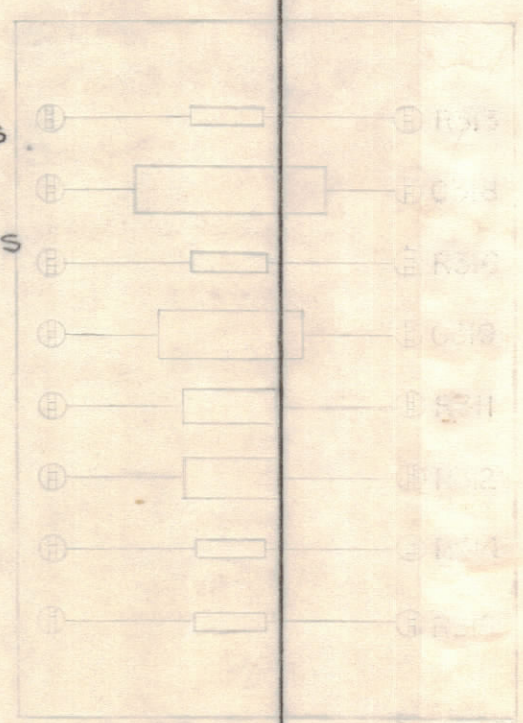


STAMP ON THIS SIDE

NOTE~  
 ALL LETTERING  
 1/8 HIGH BLACK  
 GOTHIC.

STAGE-3 STAGE-3 SUB-ASSEMBLY (A-1857-3)

Note:  
 ① Do Not Solder Components to terminal lugs.  
 ② Item 2 Is For ALL Jumpers Shown.



REAR VIEW SHOWN  
 FINAL ASSY (A-1857-4)

NOTE  
 OBSOLETE, NO LONGER USED  
 DATE 8-25-60  
 EMN # 2725

2	8	CM35B103K	CAPACITOR, FIXED, MICA	C319 C369
1	7	CN-100-4	CAPACITOR, FIXED	C-318
2	6	RC42GF912K	RESISTOR, CARBON	R311 R312
2	5	RC20GF224K	"	R314 R315
3	4	RC20GF101K	RESISTOR, CARBON	R310, R313 R316
X	3	PX-104-1-.022	INSULATED, SLEEVING	
X	2	WL-100-7	WIRE; BUSS-BAR, TINNED	
16	1	TE-109-3	SPLIT TERMINAL LUG	

REQ. ITEM	PART NO.	DESCRIPTION	SYMBOL
THE TECHNICAL MATERIEL CORP. MAMARONECK, NEW YORK			
ASSEMBLY, TERMINAL BOARD, HEATERS			
DRAWN		ELEC. DES. APP.	
CHECKED		MECH. DES. APP.	
HEAT TREAT. SPEC.		FINAL APPROVAL	
FINISH & SPEC. NO.		A-1857	

ISSUE	ZONE	DESCRIPTION	DATE	CH. NO.	DRAFTS	CHECKER	ENG. APP.
B	1	NOTE (DWG OBSOLETE) ADDED	8-25-60	2750	RK	JOB	JOB
STAGE	1-2-4	4 7/8 WAS 3 5/8 WIRES ADDED TO REAR VIEW	6-15-60	2510	P	JOB	JOB

REQ PER UNIT	MODEL	SECTION	ASSY. NO.	DATE
1	CMO-1 CMO-2			3-30-60