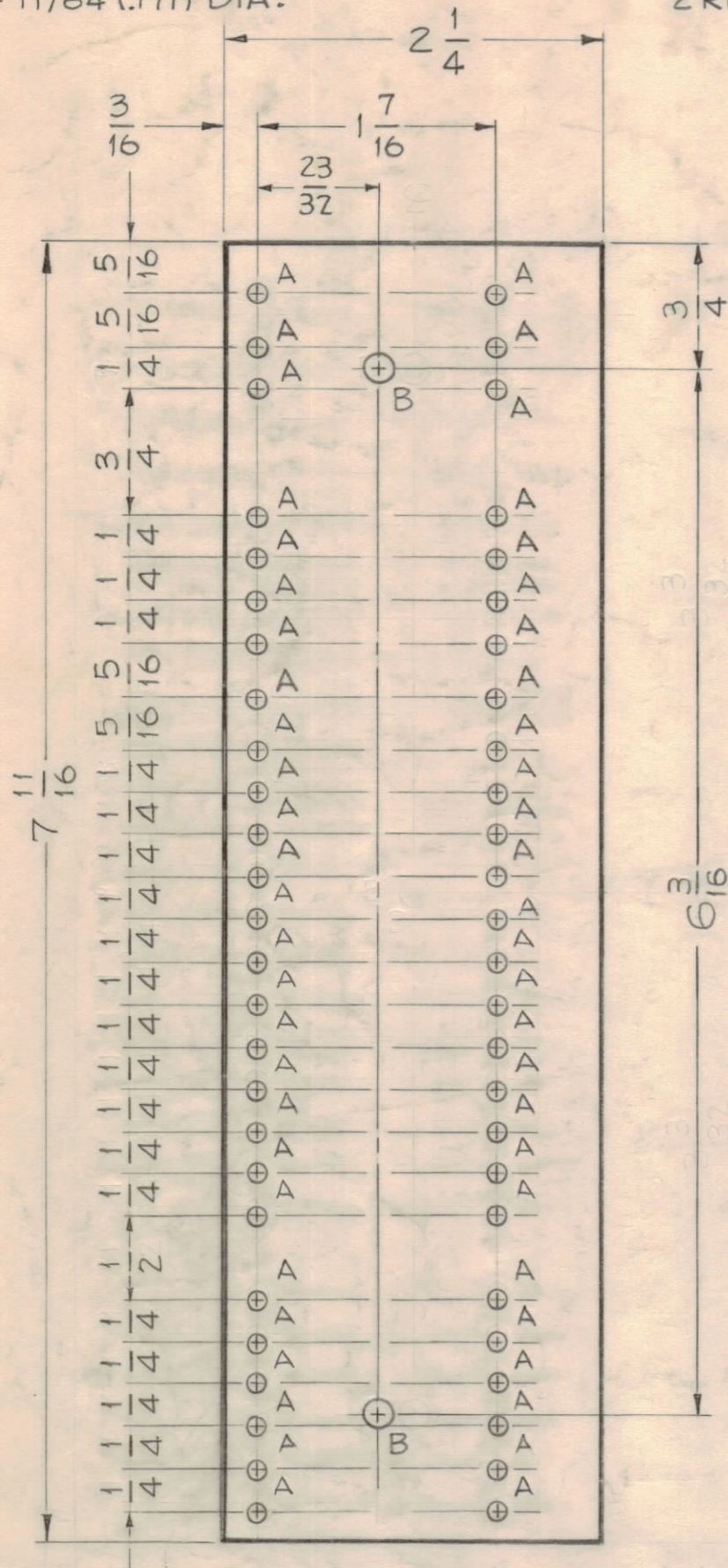


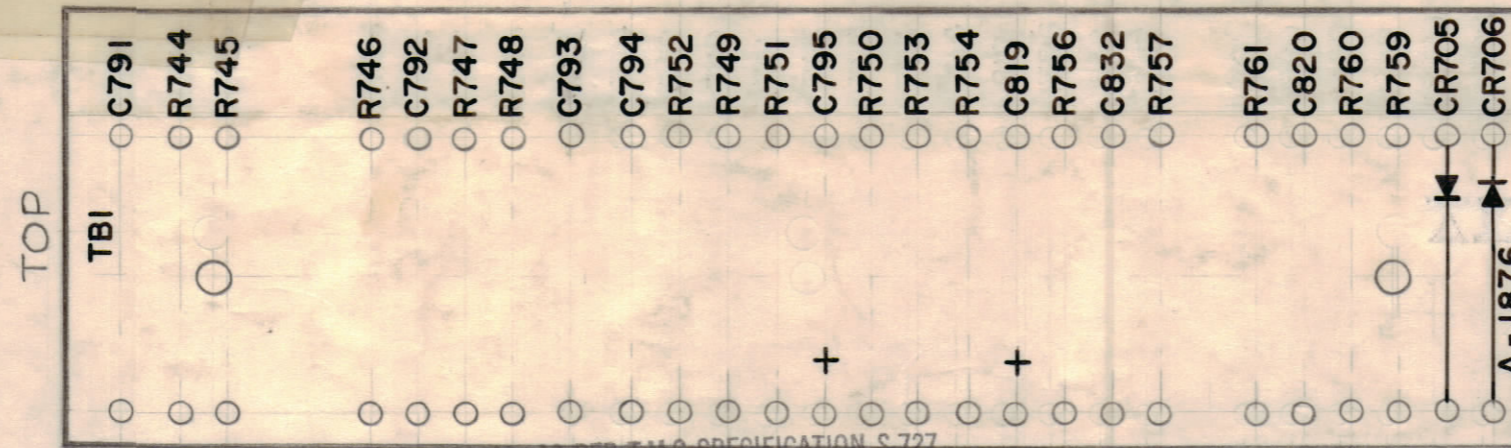
HOLES -
 A ~ NO. 32 DRILL (.116) DIA.
 B ~ 11/64 (.171) DIA.

52 REQ.
 2 REQ.



MATERIAL ~ 1/8 NATURAL PHENOLIC, XXXP

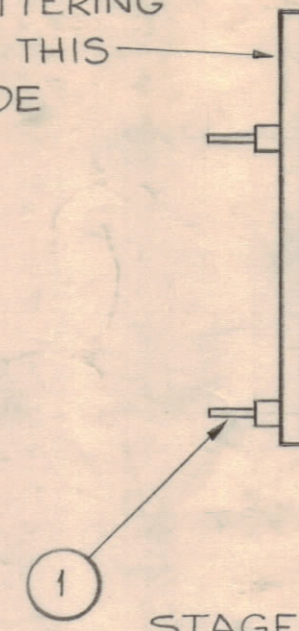
STAGE 1 ~ MACHINING
 (A-1876-1)



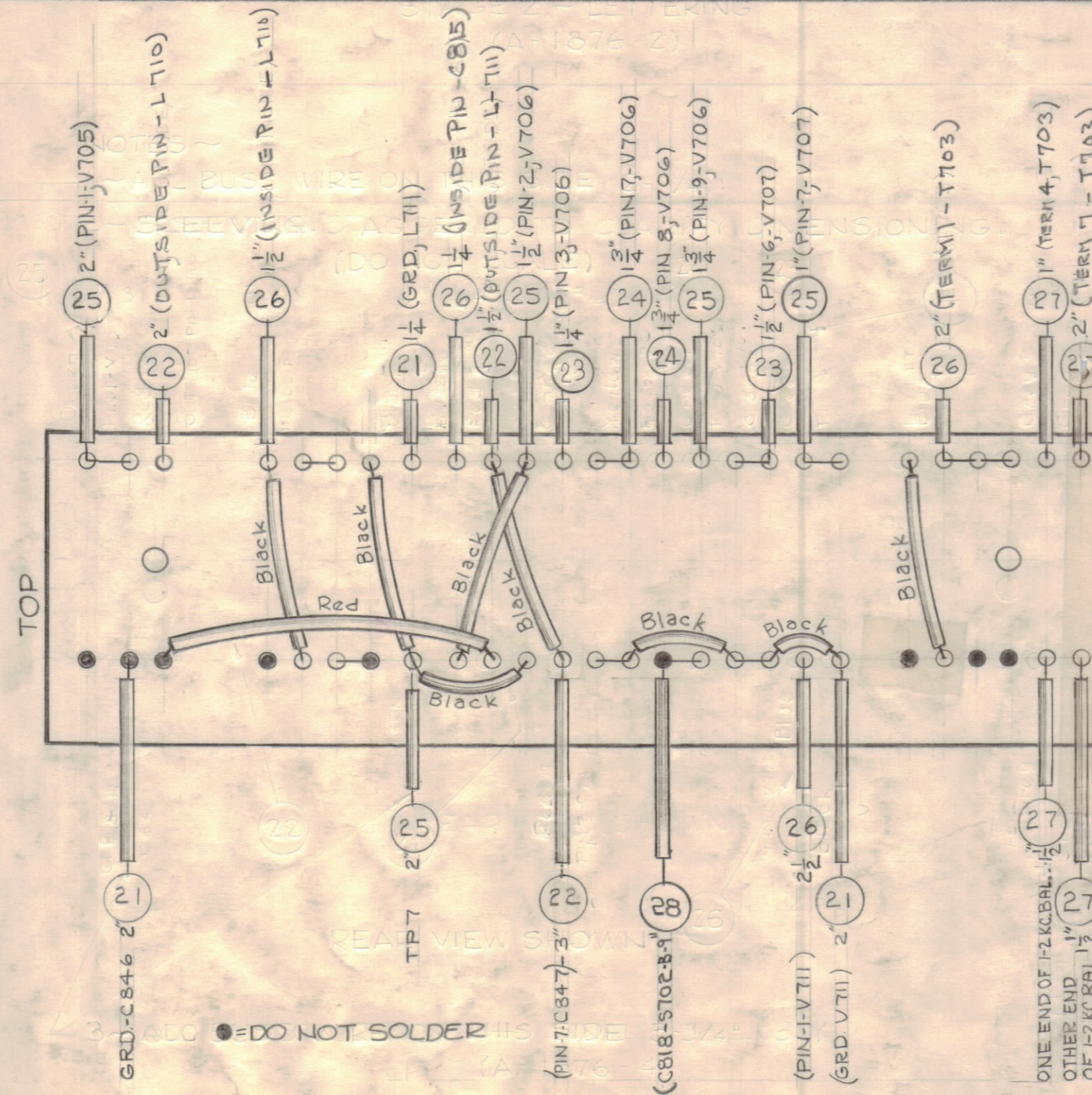
MARKING PROCESS: AS PER TMC SPECIFICATION S-727

NOTE ~ ALL LETTERING 1/8 HIGH BLACK GOTHIC.
 STAGE 2 - LETTERING (A-1876-2)

LETTERING
 ON THIS
 SIDE



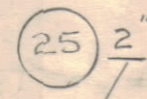
STAGE 3 ~ SUB-ASSEMBLY
 (A-1876-3)



SLEEVING STAGGERED TO CLARIFY DIMENSIONS
 (DO NOT SCALE)

REAR VIEW SHOWN

STAGE 4 - FINAL ASSEMBLY
 (A-1876-4)



● = DO NOT SOLDER
 DENOTES LENGTH OF
 SLEEVING.
 BUSS BAR TO BE 3/4" LONGER

QTY	ITEM	PART NO.	DESCRIPTION	SYMBOL
9	28	MWC22(7)U5	WIRE, ELECTRICAL	GREEN
X	27	PX104-7-034	INSULATION, SLEEVING	Gray
X	26	PX104-6-034		Blue
X	25	PX104-4-034		Green
X	24	PX104-2-034		Yellow
X	23	PX104-8-034		Orange
X	22	PX104-3-034		Red
X	21	PX104-1-034	INSULATION, SLEEVING	Black
1	20	CC-100-24	CAPACITOR	C792
2	19	CP106C403-4		C791/C793
1	18	CM200EO27F		C794
2	17	CE106		C795/C819
2	16	CC100-16	CAPACITOR	C820/C832
1	15	RC42GF222J	RESISTOR, CARBON	R745
1	14	RC20GF474J		R744
3	13	RC20GF473J		R747, R753 R757
1	12	RC20GF471J		R754
1	11	RC20GF331J		R750
1	10	RC20GF222J		R752
2	9	RC20GF155J		R759/R760
2	8	RC20GF124J		R761/R748
1	7	RC20GF104J		R746
1	6	RC20GF103J		R749
2	5	RC20GF101J	RESISTOR, CARBON	R751/R756
X	4	WL100-7	WIRE, BUSS BAR, TINNED	
2	3	IN100	DIODE	CR705 CR706
X	2	BS100	SOLDER, SOFT	
52	1	TE109-3	LUG, SPLIT TERMINAL	

REQ	ITEM	PART NO.	DESCRIPTION	SYMBOL
SEE STAGE 1				
STOCK SIZE				
SEE STAGE 1				
MATERIAL				
TYPE & TEMPER				
HEAT TREAT. SPEC.				
FINISH & SPEC. NO.				

ISSUE	ZONE	DESCRIPTION	DATE	CH. NO.	DRAFTS	CHECKER	ENG. APP.
G		CHG'D ALL RES. TOL. FR "K" TO "J"	10/18/66	17048	RME		
F		PX104-X-034 WAS PX100-X-022	1/13/66	15567			
E		IT. (28) ADDED; CALLOUTS UPDATED	7/15/64	11749			
E	H3	STAGE 2, SYMPOLARITIES REVERSED					
D		DO NOT SOLDER NOTE CLARIFIED	4-2-62	6571			
C		ITEM 9 WAS RC20 GF152K	11-23-60	3562	W.F.		
C		ON STAGE 2, ADDED CALLOUTS TO CTISE 619, DROPS TO CR705 TOL					
B		WIRE LENGTHS & DESTINATIONS ADDED	8-30-60	2891	W.F.		
B	D2	ITEM 19 WAS CP-102-1					
A		ITEM 20 WAS CX-104-36	8/11/60	2801	W.F.		

TOLERANCES
 DEC. DIM. ±
 FRAC. DIM. ± 1/64
 ANGULAR DIM. ±

SCALE: DO NOT SCALE

MAXIMUM ALLOWABLE TOLERANCES HAVE BEEN DETERMINED AND ANY DEVIATIONS WILL BE CAUSE FOR REJECTION. REMOVE ALL BURRS AND SHARP EDGES

REQ PER UNIT	MODEL	SECTION	ASSY. NO.	DATE
1	CLL-1			4-21-60

A-1876 G