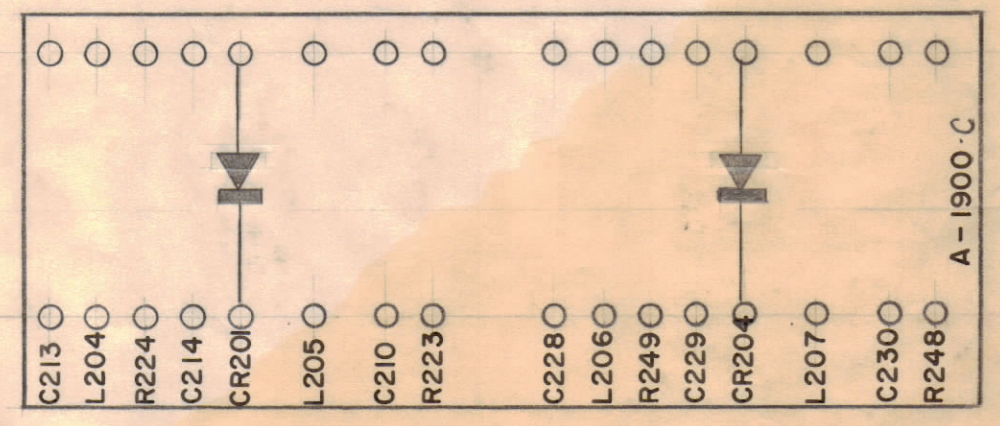


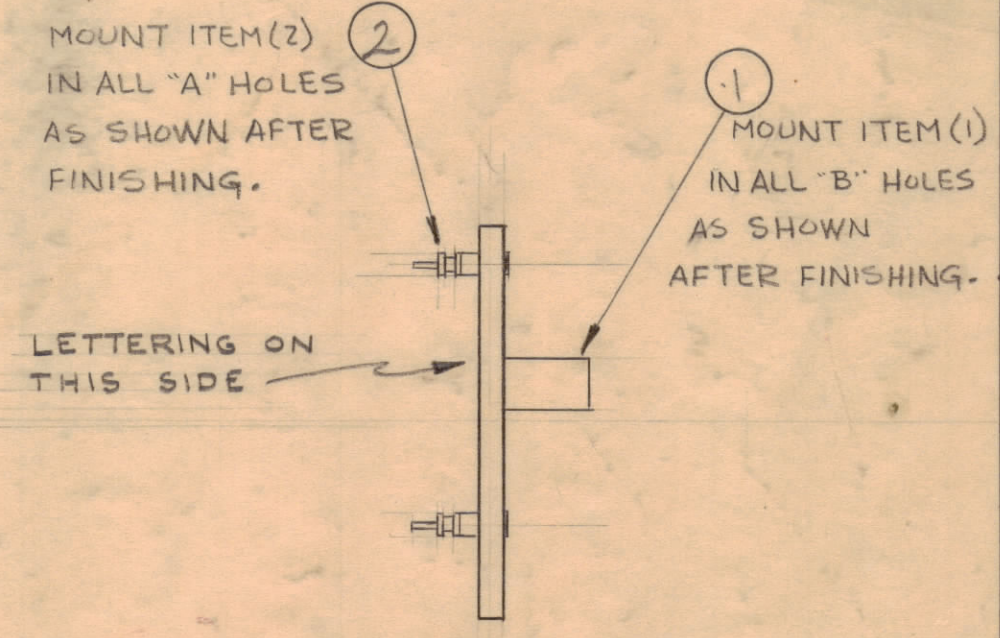
MATERIAL: 1/8 NATURAL PHENOLIC, XXXP
 A - HOLES (.116) DIA. NO.32 DRILL-32
 B - 3/16 (.187) D. 3 REQ

STAGE 1 ~ MACHINING
(A-1900-1)

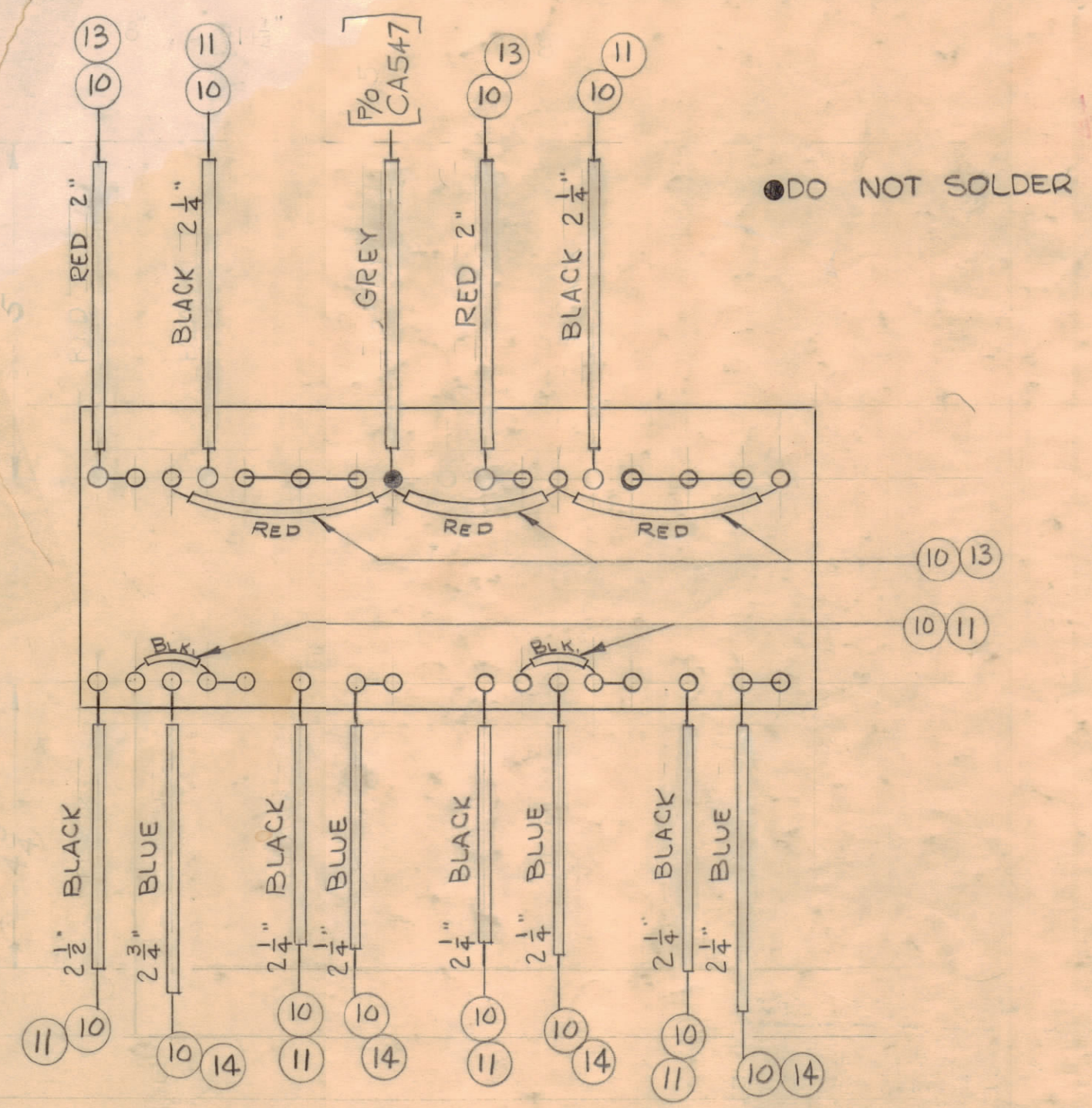


NOTE: ALL LETTERING 1/8 HIGH BLACK GOTHIC.

STAGE 2 ~ LETTERING
(A-1900-2)



STAGE 3 ~ SUB ASS'Y.
(A-1900-3)



STAGE 4 ~ FINAL ASSEMBLY
(A-1900-4)

NOTICE TO PERSONS RECEIVING THIS DRAWING

THE TECHNICAL MATERIEL CORPORATION claims proprietary right in the material disclosed hereon. This drawing is issued in confidence for engineering information only and may not be reproduced or used to manufacture anything shown hereon without permission from THE TECHNICAL MATERIEL CORPORATION to the user. This drawing is loaned for mutual assistance and is subject to recall at any time.

Property of:
 THE TECHNICAL MATERIEL CORPORATION
 MAMARONECK, NEW YORK

REQ. ITEM	PART NO.	DESCRIPTION	SYMBOL
9 1/2	14 PX-104-6-.034	INSULATION, SLEEVING	BLUE
8"	13 PX-104-3-.034	INSULATION, SLEEVING	RED
2	12 CN108C104J	CAPACITOR, FIXED	C210 C230
14 1/2	11 PX-104-1-.034	INSULATION SLEEVING	BLACK
47"	10 WL-100-7	WIRE BUSS BAR TINNED	
X	9 BS-100	SOLDER, SOFT	
2	8 1N67	DIODE	CR201 CR204
2	7 RC20GF473K	RESISTOR	R223 R248
2	6 RC20GF474K	RESISTOR	R-224 R-249
2	5 CL-101-4	COIL	L-205 L-207
2	4 CL-140-1	COIL	L-204 L-206
4	3 CC-100-2B	CAPACITOR	
32	2 TE-109-3	SPLIT TERMINAL LUG	A
3	1 TE-108-13	STANDOFF	B

C213
C214
C2280
C2290

ISSUE ZONE	DESCRIPTION	DATE	CH. NO.	DRAFTS	CHECKER	ENG. APP.
D	C2 IT.12 WAS CN108C1003J	1.28.65	13350	AB	@	DB
C	C2 ITEM(11) WAS PX-100-1-.022;	2.4.63	8092		W	B
C	ITEMS(13) & (14) ADDED; STAGE(4) CLARIFIED					

REQ PER UNIT	MODEL	SECTION	ASSY. NO.	DATE
1	CBE-1			5-6-60

SEE STAGE (1)	THE TECHNICAL MATERIEL CORP. MAMARONECK, NEW YORK
SEE STAGE (1)	CBE - METERING BOARD
MATERIAL	
TYPE & TEMPER	
HEAT TREAT. SPEC.	
FINISH & SPEC. NO.	A-1900