

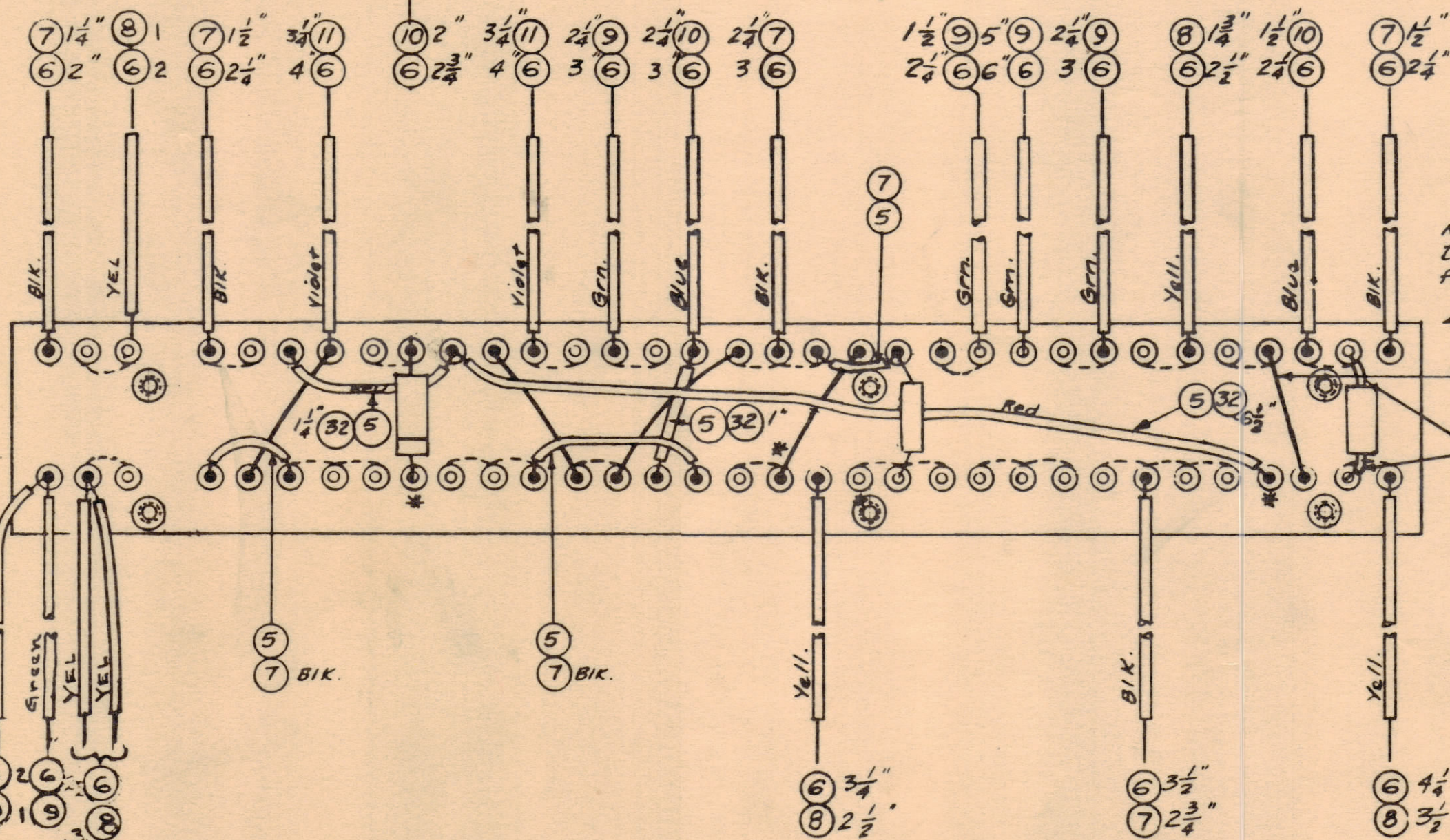
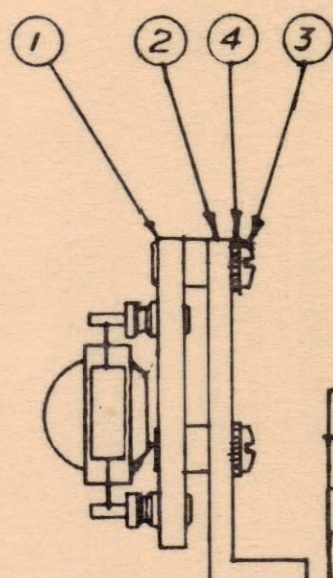
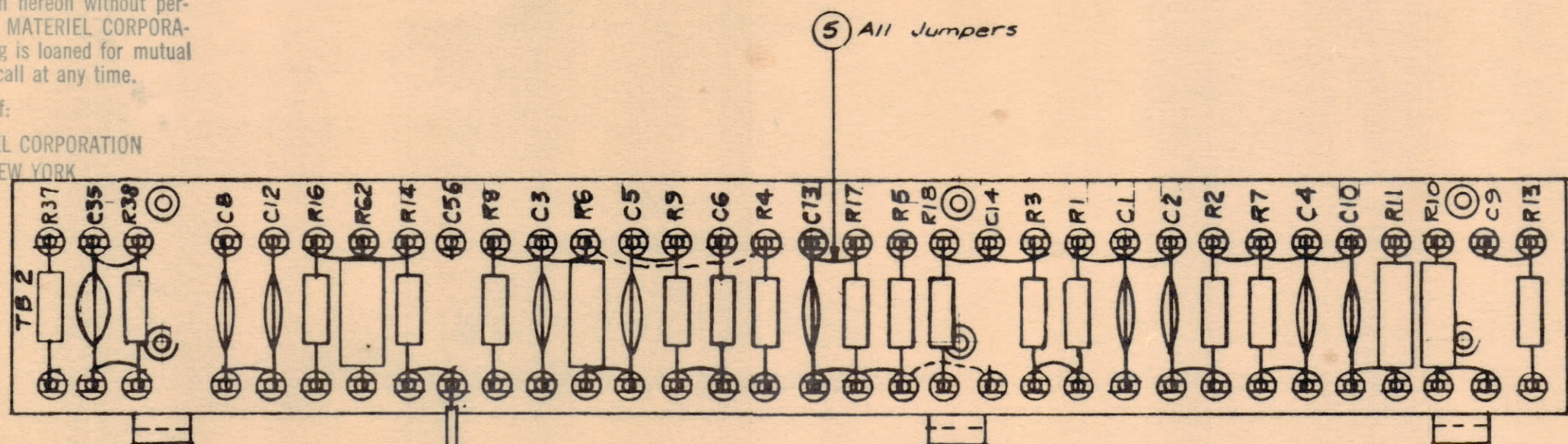
IF IT IS FOUND DESIRABLE TO CHANGE ANY TOLERANCE OR OTHER DETAIL SPECIFIED ON THIS DRAWING NOTIFY THE PURCHASER PROMPTLY.

MAXIMUM ALLOWABLE TOLERANCES HAVE BEEN DETERMINED AND DEVIATIONS WILL BE CAUSE FOR REJECTION. REMOVE ALL BURRS AND SHARP EDGES.

NOTICE TO PERSONS RECEIVING THIS DRAWING

THE TECHNICAL MATERIEL CORPORATION claims proprietary right in the material disclosed hereon. This drawing is issued in confidence for engineering information only and may not be reproduced or used to manufacture anything shown hereon without permission from THE TECHNICAL MATERIEL CORPORATION to the user. This drawing is loaned for mutual assistance and is subject to recall at any time.

Property of:
THE TECHNICAL MATERIEL CORPORATION
MAMARONECK, NEW YORK



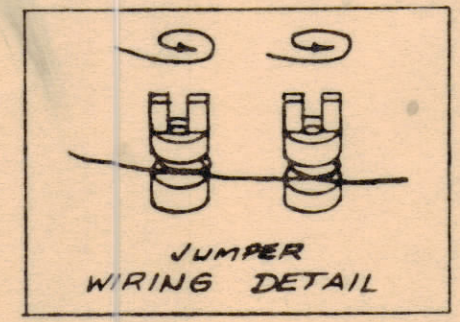
2	35	CN-100-1	CAPACITOR, FIXED (.01)	C9
1	34	RC20GF223K	RESISTOR, FIXED, COMP	R37
1	33	CC-101-4	Capacitor, Fixed, Ceramic	C6
8 3/4	32	PX-104-3-.034	Insulation, Sleeving (Size 20)	Red
X	31	BS-100	Solder, Sott	
1	30	RC42GF223K	Resistor, Fixed, Comp.	R62
1	29	RC20GF121K		R38
	28	DELETED		
1	27	RC20GF106K		R18
1	26	RC20GF155K		R17
1	25	RC20GF103K		R14
1	24	RC20GF154K		R13
	23	DELETED		
2	22	RC20GF222K		R16, R8
1	21	RC20GF471K		R7

1	20	RC32GF683K							R6
1	19	RC20GF831K							R5
3	18	RC32GF223K							R4, R10, R11
2	17	RC20GF474K							R9, R2
2	16	RC20GF104K	Resistor, Fixed, Comp.						R1, R3
	15	DELETED							
1	14	CN108C1003J	Capacitor, Fixed, Mylar						C14
1	13	CC-100-9	Capacitor, Fixed, Ceramic						C13
9	12	CC-100-16	Capacitor, Fixed, Ceramic						
2 1/2	11	PX-104-9-.034	Insulation, Sleeving (Size 20)						Violet
9 1/2	10	PX-104-6-.034							Blue
13 3/4	9	PX-104-4-.034							Green
10 3/4	8	PX-104-2-.034							Yellow
9	7	PX-104-1-.034	Insulation, Sleeving (Size 20)						Black
56	6	WL-100-7	Wire, Buss (Size 22)						
X	5	WL-100-8	Wire, Buss (Size 24)						
8	4	LWEOGMRN	Lockwasher, Ext.						
6	3	SCB506328NG	Screw, Machine						
3	2	MS-1321	Bracket, Angle, T.B.						
1	1	A-1924	Terminal Bd. No. 2 Sub-Ass'y.						

A-1925 A

* - Do Not Solder These Connections on This Ass'y.

NOTE:
Assemble Foil Wound Condensers
As Shown.



5	ITEM 33 DELETED, ADDED TO ITEM 18.	3,15,60	27,55				
4	ITEM 28 DELETED, ADDED TO ITEM 16.						
3	ITEM 20 WAS RC30GF683K						
2	ITEM 3 WAS SCB506328NG						
1	ITEM 4 WAS LWEOGMRN						

ISSUE	ITEM	CHANGED FROM	DATE	CN NO.	DRAFTS	CHECKER	ENG. APP.
TOLERANCES		SCALE:					
ALL OTHERS	DEC DIM ±	DRILL, PUNCH, COMMERCIAL STOCK					
	FRAC DIM ±	SIZES AND MANUFACTURERS					
	ANGULAR DIM ±	TOLERANCES ARE NOT INCLUDED.					

1	MSR-5			6-24-60	
REQ PER UNIT	MODEL	PROJECT NO.	ASS'Y NO.	DATE	USED ON

REQ	ITEM	PART NO.	DESCRIPTION	SYMBOL
THE TECHNICAL MATERIEL CORP. MAMARONECK, NEW YORK				
TERMINAL BOARD NO. 2				
FINAL ASS'Y				
DRAWN		ELEC. DES. APP.		MECH. DES. APP.
CHECKED		J. ANGER		
FINISH & SPEC. NO.				A-1925 A