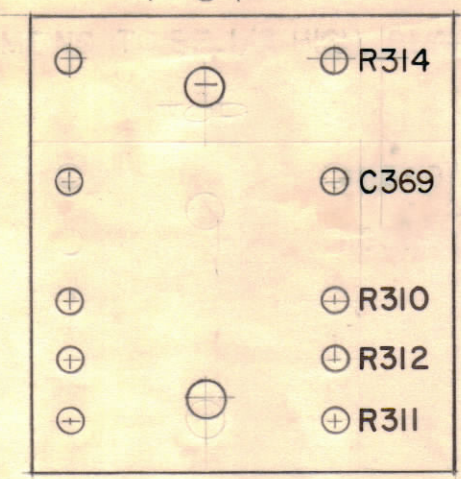
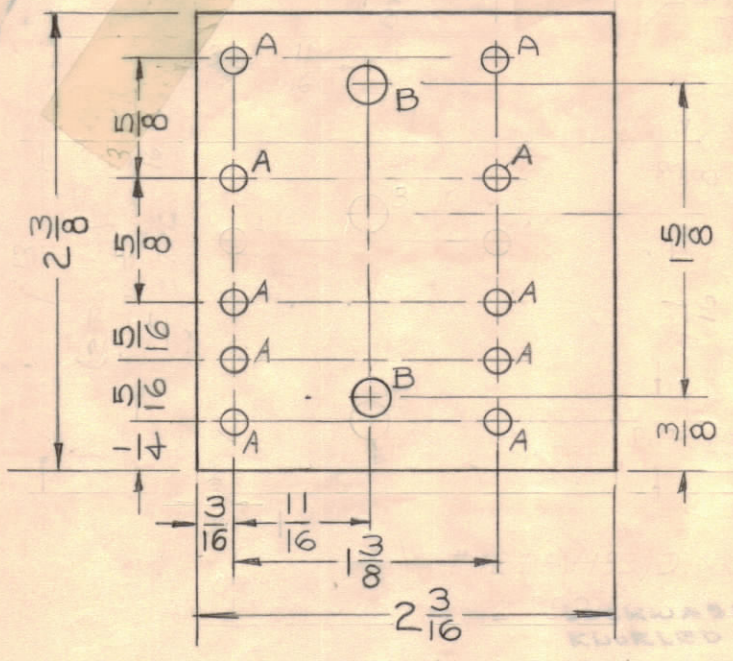


MARKING PROCESS: AS PER TMC SPECIFICATION S-727
STAMPING TO BE 1/8 HIGH BLACK GOTHIC

A ~ .116 DIA. 10 REQ.
B ~ .189 DIA. 2 REQ.

TOP

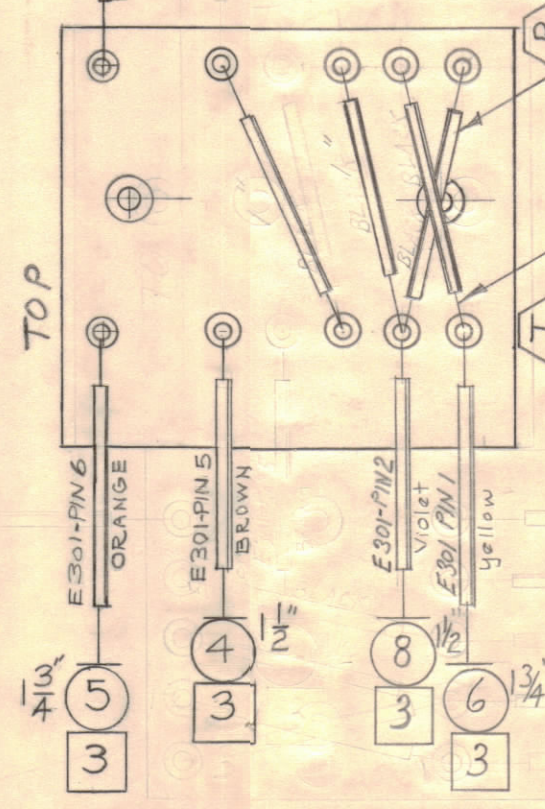
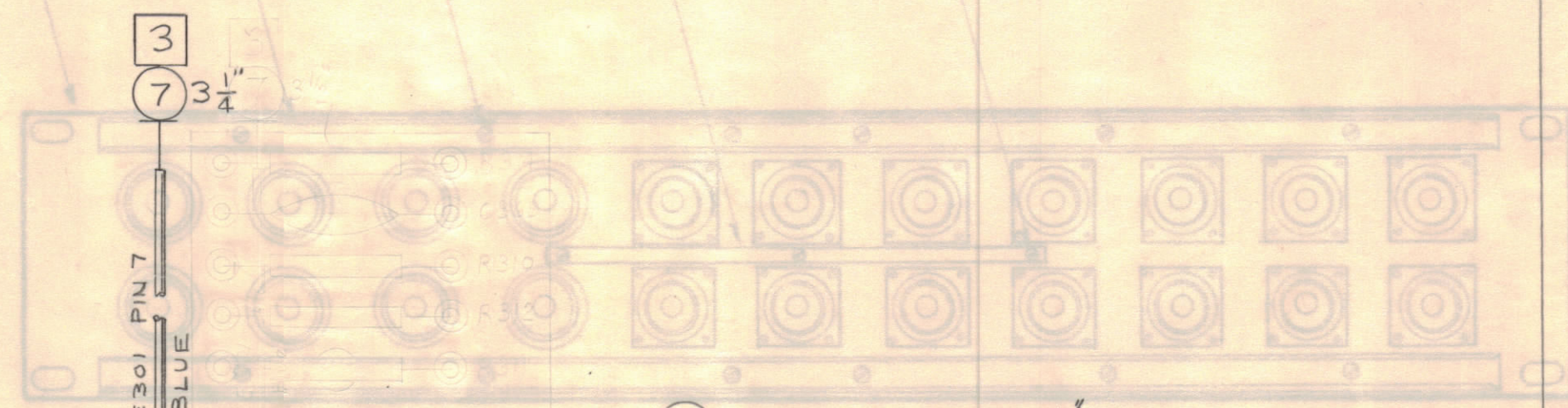


NOTICE TO PERSONS RECEIVING THIS DRAWING
PROPERTY OF: THE TECHNICAL MATERIEL CORPORATION, MAMARONECK, NEW YORK

MACHINING ~ (A-1951-1)
MATERIAL ~ 1/8, XXXP, PHENOLIC, FINISH - NATURAL.

STAMPING ~ (A-1951-2)

SUB-ASSEMBLY (A-1951-3)



14 ALL BLACK SLEEVING 1" LONG

9 ALL BUSS WIRE THE SAME

T DENOTES TOP & BOTTOM FOR STAGING SHEETS ONLY.

REAR VIEW SHOWN

ELECTRICAL ASSEMBLY (A-1951-4)

14	PX-104-1-.034	INSULATED, SLEEVING	BLACK
1	13	CM35B103K	CAPACITOR, FIXED MICA C369
2	12	RC42GF912J	RESISTOR, FIXED COMPOSITION R311, 312
1	11	RC20GF101J	RESISTOR, FIXED COMPOSITION R310
1	10	RC20GF224J	RESISTOR, FIXED COMPOSITION R314
9	WL-100-7	BUSS-WIRE	
8	MWC 22(7)U7	CABLE, INSULATED	VIOLET
7			BLUE
6			YELLOW
5			ORANGE
4	MWC 22(7)U1	CABLE, INSULATED	BROWN
5	3	TE-120-2	LUG, SPADE
2	2	TE-108-3	STANDOFF, RIVET TYPE
10	1	TE-109-3	TERMINAL, LUG

REQ. ITEM	PART NO.	DESCRIPTION	SYMBOL
THE TECHNICAL MATERIEL CORP. MAMARONECK, NEW YORK			
PHENOLIC MATERIAL			
XXXP TYPE & TEMPER			
NATURAL FINISH & SPEC. NO.			
ASSEMBLY, OVEN TERMINAL BOARD			
MODEL SPP-12			
DRAWN: JCB/ule		ELEC. DES. APP.:	MECH. DES. APP.:
CHECKED:		FINAL APPROVAL:	
		A-1951 C	

C	TOL 17 10 & 11 WERE "K"	2.1.67	17680	W/U	QCF	
B	F5 ON STAGE 4, ITEM (?) WAS 3 1/2"	2-20-63	8319			
A	D4 STAGING NOTE ADDED	10-5-60	3142			
ISSUE	ZONE	DESCRIPTION	DATE	CH. NO.	DRAFTS	CHECKER
TOLERANCES			SCALE:			
DEC. DIM. ±						
FRAC. DIM. ±						
ANGULAR DIM. ±						
MAXIMUM ALLOWABLE TOLERANCES HAVE BEEN DETERMINED AND ANY DEVIATIONS WILL BE CAUSE FOR REJECTION. REMOVE ALL BURRS AND SHARP EDGES.						

1	CMO-2			8-25-60
1	CMO-1			8-25-60
REQ PER UNIT	MODEL	SECTION	ASSY. NO.	DATE