

IF IT IS FOUND DESIRABLE TO CHANGE ANY TOLERANCE OR OTHER DETAIL SPECIFIED ON THIS DRAWING NOTIFY THE PURCHASER PROMPTLY.

MAXIMUM ALLOWABLE TOLERANCES HAVE BEEN DETERMINED AND DEVIATIONS WILL BE CAUSE FOR REJECTION. REMOVE ALL BURRS AND SHARP EDGES

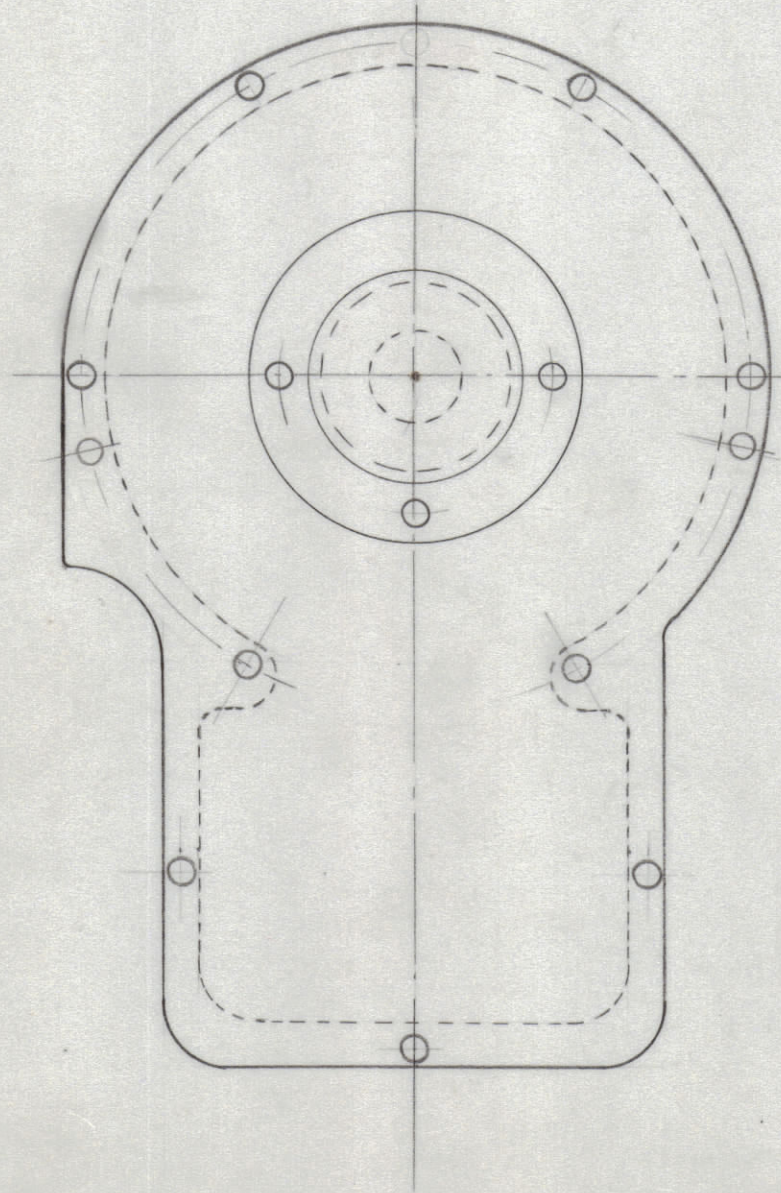
NOTICE TO PERSONS RECEIVING THIS DRAWING

THE TECHNICAL MATERIEL CORPORATION claims proprietary right in the material disclosed hereon. This drawing is issued in confidence for engineering information only and may not be reproduced or used to manufacture anything shown hereon without permission from THE TECHNICAL MATERIEL CORPORATION to the user. This drawing is loaned for mutual assistance and is subject to recall at any time.

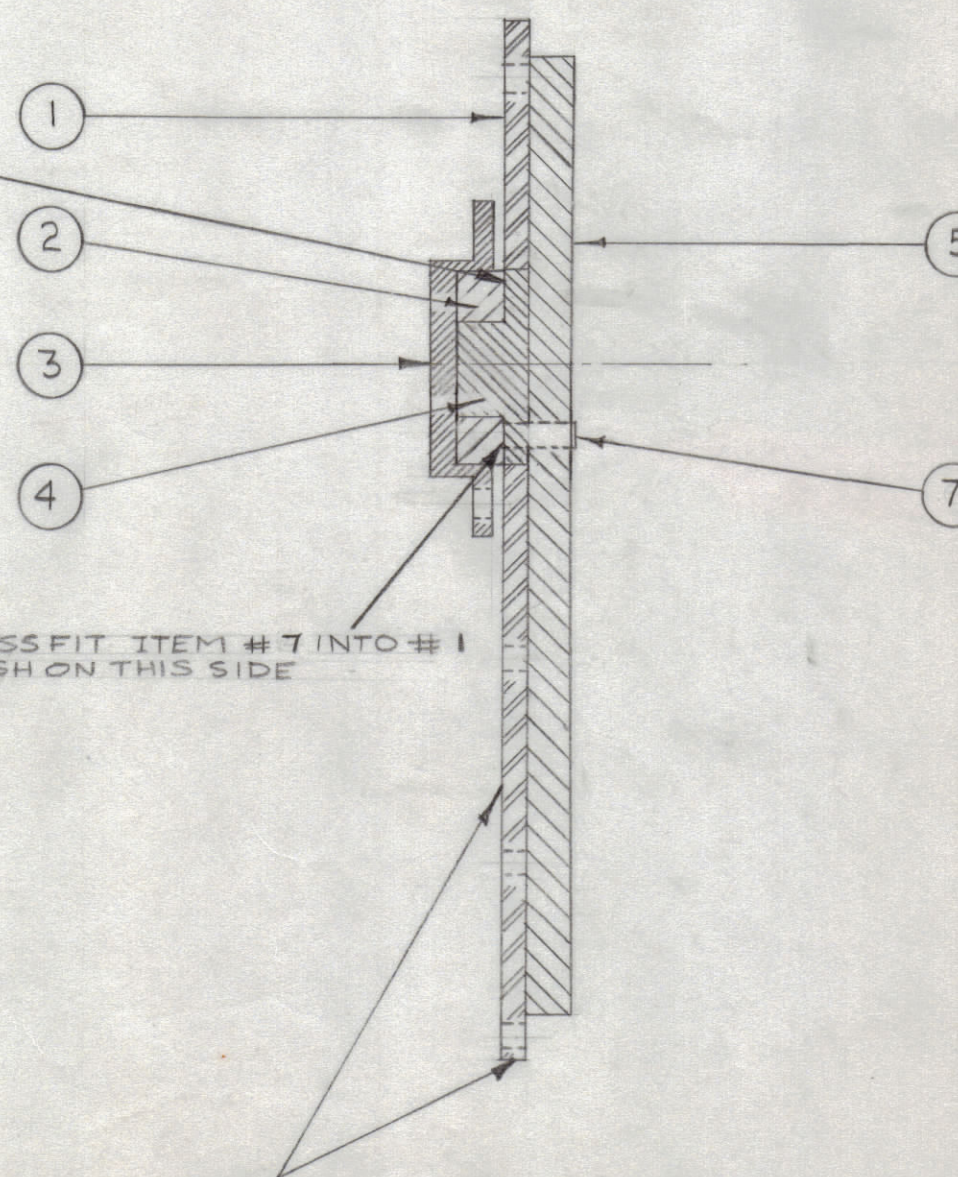
Property of:

THE TECHNICAL MATERIEL CORPORATION
MAMARONECK, NEW YORK

CEMENT ITEM (5) TO ITEM (1) WITH ITEM (6) AFTER PAINTING



PRESS FIT ITEM #4 INTO ITEM #1 - FLUSH ON THIS SIDE.



PRESS FIT ITEM #7 INTO #1 FLUSH ON THIS SIDE

NOTE:
PAINT ON FRONT SURFACE AND EDGES AFTER ASSEMBLY OF ITEM (4) & ITEM (1)

A-219

2	7	PN-106	CENTER PIN	
X	6	GL-101-1	CEMENT- PLIOBOND	
1	5	RY-102	SILENCER	
1	4	PN-104	BOSS PIN	
1	3	PM-150	COVER BOSS	
1	2	RY-101	ELASTIC INSERT	
1	1	PM-151	COVER	

REQ.	ITEM	PART NO.	DESCRIPTION	SYMBOL
//			THE TECHNICAL MATERIEL CORP.	
//			MAMARONECK. NEW YORK	
//			GEAR HOUSING COVER	
//			ASSEMBLY	
//			16 10-17-52	MECH. DES. APP.
//			11/17/52	MECH. DES. APP.
//			CHECKED	FINAL APPROVAL
//			5-151	A-219

ISSUE	ITEM	CHANGED FROM	DATE	CN. NO.	DRAFTS	CHECKER	ENG. APP.
TOLERANCES							
SCALE: FULL SCALE				DRILL, PUNCH, COMMERCIAL STOCK SIZES AND MANUFACTURERS TOLERANCES ARE NOT INCLUDED.			
ALL OTHERS	DEC. DIM. ±	FRAC. DIM. ±	ANGULAR DIM. ±				

TWR-115	151	A-237	10-17-52
MODEL	PROJECT NO.	ASS'Y. NO.	DATE

USED ON