

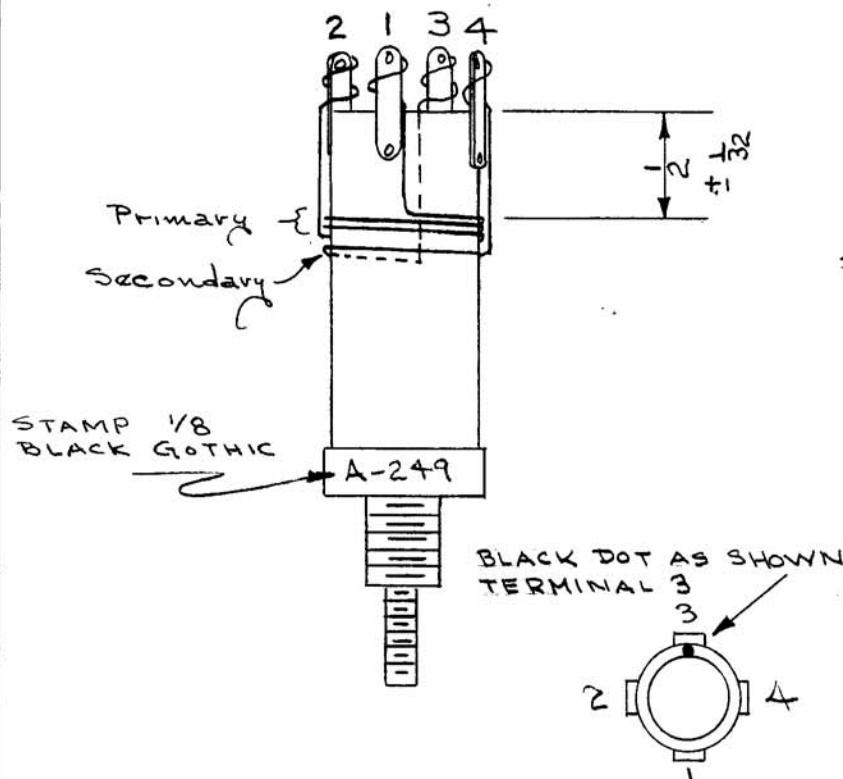
A-249-C

Primary : 2 3/4 turns, #20 DSC, Close wound

Secondary : 3/4 turn, #20 DSC, Clos wound

WI-107-1

USE CLOCKWISE WINDING DIRECTION WHILE LOOKING AT THE BOTTOM END OF THE COIL.



Note:

Lead should not enter lug base but should be connected as shown.

Important:

Always start and end each winding on the same side of the lug.

Bring lead down vertically from lug to coil.



Secondary wound on coil for immediately adjacent to primary.

Leads from windings to lugs should be run through spaghetti.

Entire coil should be covered with GL-104-2; and then Baked for 2 Hours at 70°C or 160°F.

Form: LSL with red slug, (20063 - K), Diameter : 1/2" Cambridge Thermionic Corporation

CF-106-1

Tolerance: L max. : .26 microhenry ± .01 microhenry , Q : 130

Q must be greater than 100

L min. : .18 microhenry ± .005 microhenry, Q : 120

Measured at 25 Mc.

L max measured at point where tip of slug screw is flush to mounting stud end.

USED ON AG10-5

ATTENTION: This print supercedes # AEM 101

C	USED ON NO. WAS A-615	9-25-63	AW	AST
B	BAKE NOTE ADDED	1/18/54	AW	AST
A	WAS GL-102			
	BLACK DOT ADDED	12/6/53	AW	AST
SM.	DESCRIPTION	DATE	CHK.	APP.

DATE	4/30/52	COIL L 208 MODEL VOX 1, 2, 3, 4, 5, 6	THE TECHNICAL MATERIEL CORPORATION MAMARONECK, NEW YORK	
DRN.	J.H.P.			
CHKD.	A.J.J.			
APPD.	A.J.J.			
SHEET		OF	NO.	A-249 C