

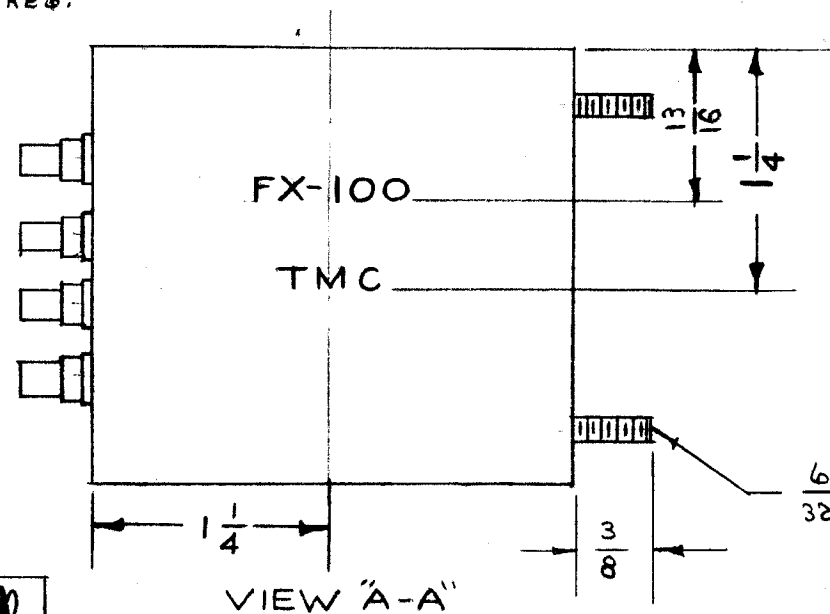
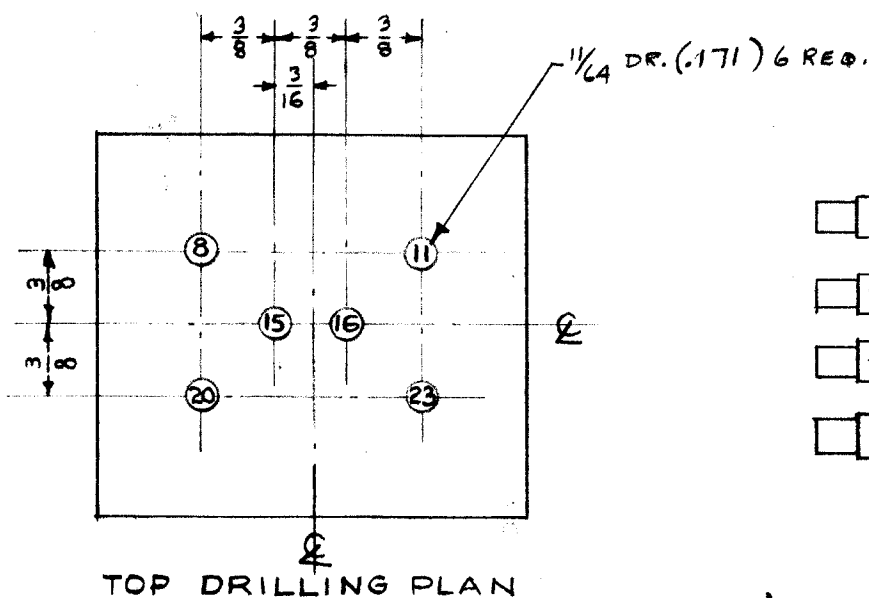
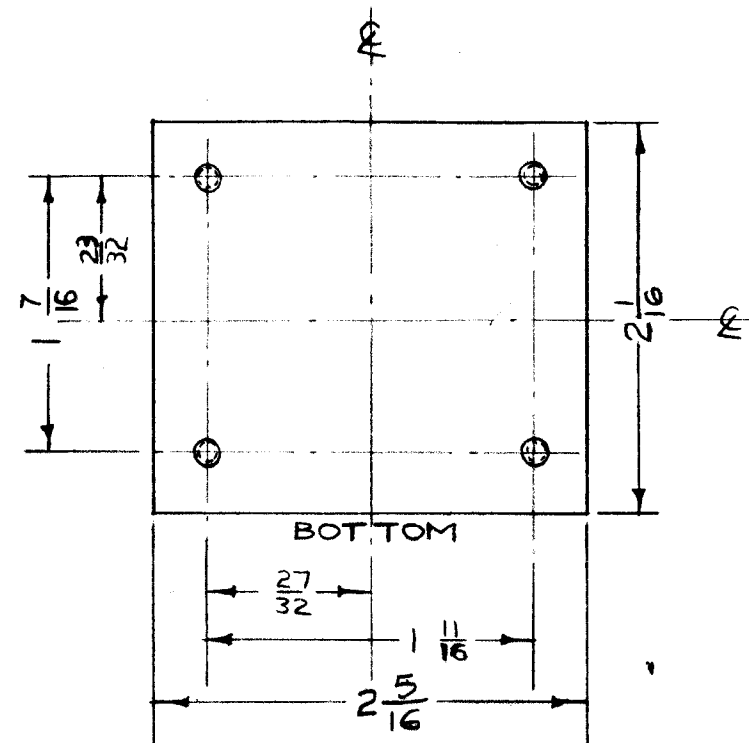
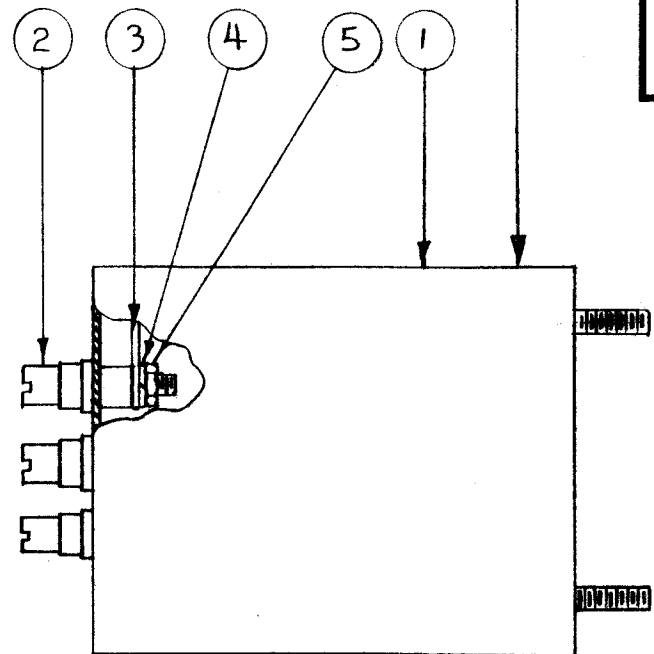
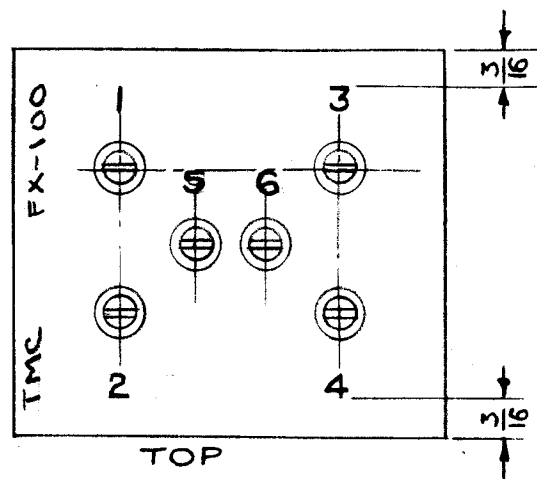
IF IT IS FOUND DESIRABLE TO CHANGE ANY TOLERANCE OR OTHER DETAIL SPECIFIED ON THIS DRAWING NOTIFY THE PURCHASER PROMPTLY.

MAXIMUM ALLOWABLE TOLERANCES HAVE BEEN DETERMINED AND DEVIATIONS WILL BE CAUSE FOR REJECTION. REMOVE ALL BURRS AND SHARP EDGES

METAL STAMPING - "FX-100" & "TMC" ON THIS SIDE - SEE VIEW "A-A".

A-280 C

NOTE: ALL LETTERING 1/8" METAL STAMP.



REQ.	ITEM	PART NO.	DESCRIPTION	SYMBOL
6	5	NTH0440B06	NUT, HEX.	
6	4	LWS04MRC	LOCKWASHER, SPLIT	
6	3	TE-110-2	LUG, SOLDER	
6	2	TE-101-1	BUSHING, SLOTTED HEAD	
1	1	BX-100-8S	CASE, TRANSFORMER	

REVISION	DATE	DESCRIPTION	BY	APP.			
C	1	DIM. CHG'D. FROM 2x2-1/4 TO 2-1/16 x 2-5/16 AS PER BX-100-8	1/6/58	3	16	FAO	WJ
B	1	DRILL SIZE ADDED	11/11/53	2	16	FAO	WJ
A	1	STAMPING ADDED ON TOP	11/3/53	1	16	FAO	WJ

TOLERANCES		SCALE: FULL	
ALL OTHERS	DEC. DIM. ± FRAC. DIM. ± ANGULAR DIM. ±	DRILL, PUNCH, COMMERCIAL STOCK SIZES AND MANUFACTURERS TOLERANCES ARE NOT INCLUDED.	

MODEL	PROJECT NO.	ASS'Y. NO.	DATE
FX-100	160	A-279	12-17-52

THE TECHNICAL MATERIEL CORP.	
MAMARONECK. NEW YORK	
CASE ASSEMBLY	
16 12-17-52	
DRAWN	ELEC. DES. APP.
C. D. D.	
CHECKED	FINAL APPROVAL
	A-280 C

ISSUE	ITEM	CHANGED FROM	DATE	CN. NO.	DRAFTS	CHECKER	ENG. APP.
C	1	DIM. CHG'D. FROM 2x2-1/4 TO 2-1/16 x 2-5/16 AS PER BX-100-8	1/6/58	3	16	FAO	WJ
B	1	DRILL SIZE ADDED	11/11/53	2	16	FAO	WJ
A	1	STAMPING ADDED ON TOP	11/3/53	1	16	FAO	WJ