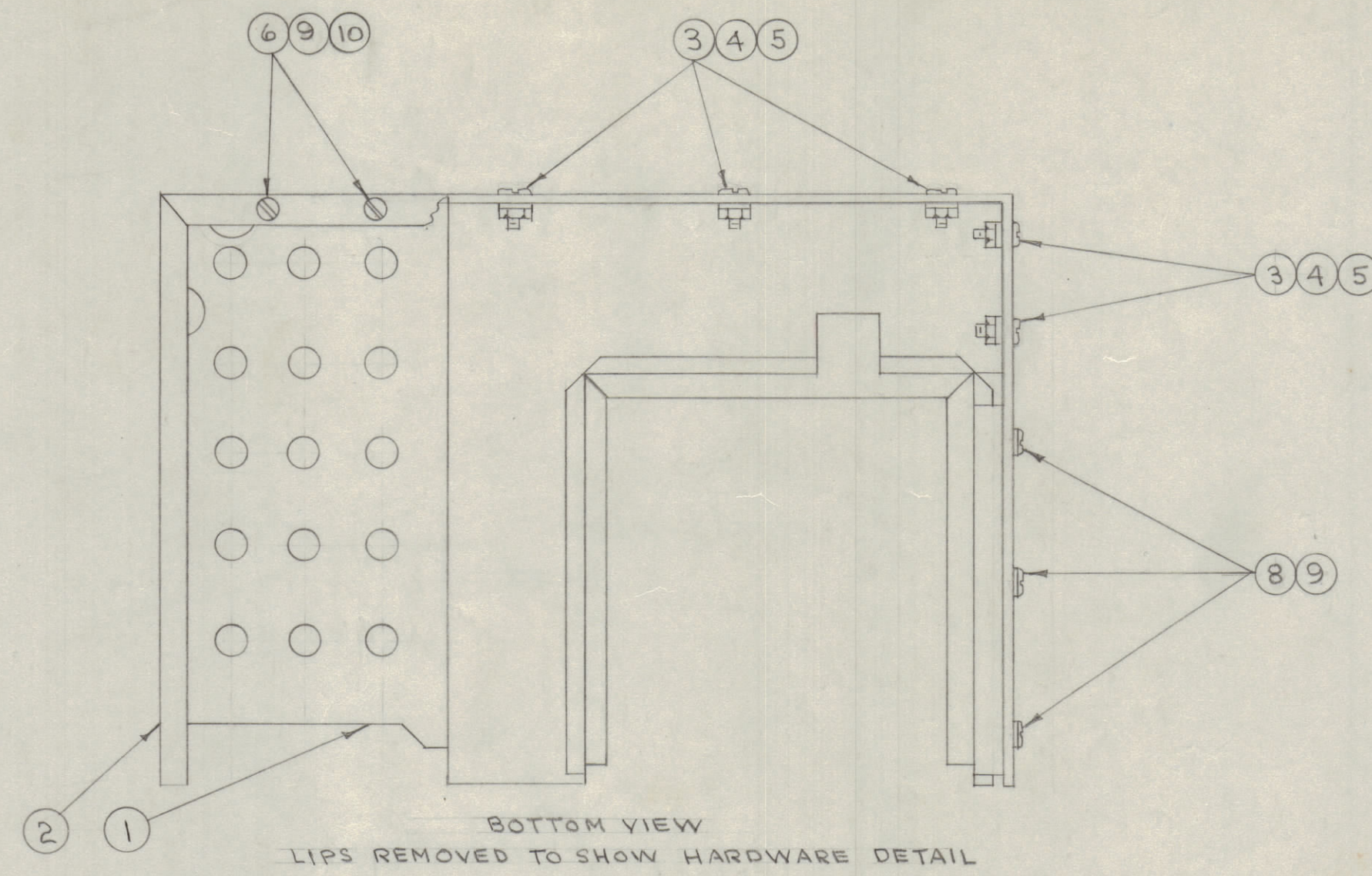


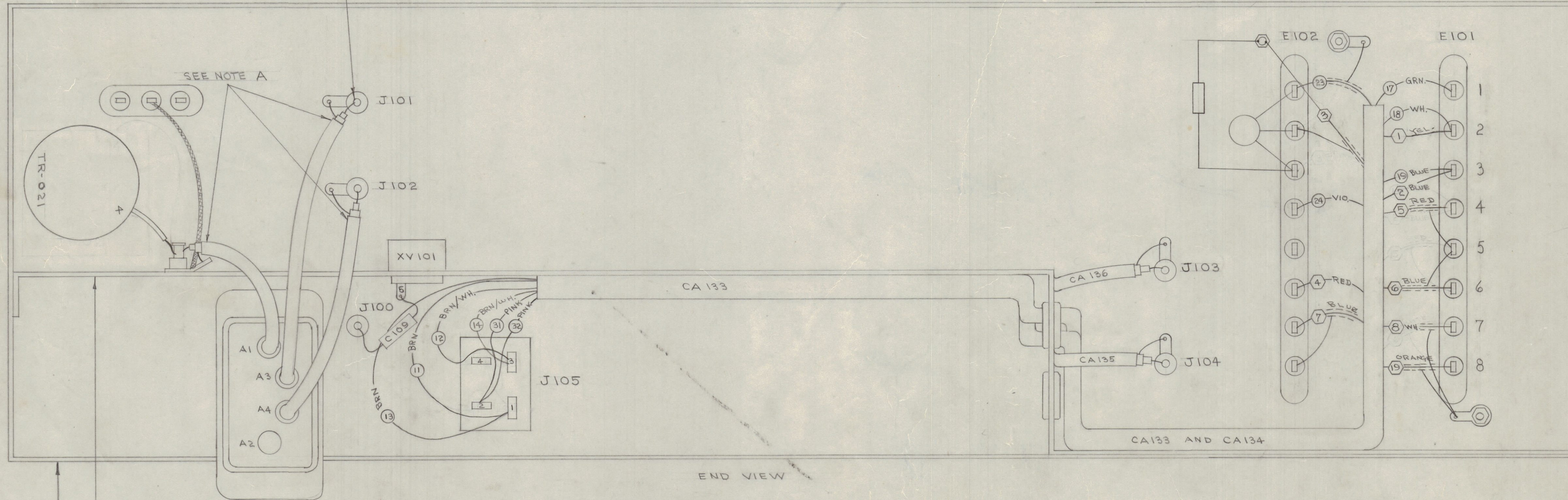
IF IT IS FOUND DESIRABLE TO CHANGE ANY TOLERANCE OR OTHER DETAIL SPECIFIED ON THIS DRAWING NOTIFY THE PURCHASER PROMPTLY.  
 MAXIMUM ALLOWABLE TOLERANCES HAVE BEEN DETERMINED AND DEVIATIONS WILL BE CAUSE FOR REJECTION. REMOVE ALL BURRS AND SHARP EDGES.

RELEASED

NOTE A - BRING SHIELDING AND CABLE INSULATION AS CLOSE TO TERMINALS AS POSSIBLE.



ALL WIRED TERMINALS



2 1

THIS DRAWING SHOWS ONLY THAT HARDWARE OR THOSE COMPONENTS NECESSARY TO CONNECT ITEM ① TO ITEM ②

WIRE NOS. ① IN THIS DRAWING CORRESPOND TO ITEM NOS. IN CA-133

WIRE NOS. ② IN THIS DRAWING CORRESPOND TO ITEM NOS. IN CA-134

F	-	DWG UPDATED	12/16/53	10538	WJG	WJG	
E	-	WIRE NOS. & COLORS CHANGED	6/16/54	S	WJG	WJG	
D	1	LEADS CHANGED	12/16/54	A	WJG	WJG	
C	1	WIRE NOS. & COLORS CHANGED	5-15-53	S	WJG	WJG	
B	2	CA136 & CA136 REVERSED	1-16-54	2	WJG	WJG	
A	1	GROUNDS ADDED TO WIRE NOS. ① & ②	12/16/54	1	WJG	WJG	
ISSUE	ITEM	CHANGED FROM	DATE	CN. NO.	DRAFTS	CHECKER	ENG. APP.

ALL OTHERS	DEC. DIM. ± FRAC. DIM. ± ANGULAR DIM. ±	DRILL, PUNCH, COMMERCIAL STOCK SIZES AND MANUFACTURERS TOLERANCES ARE NOT INCLUDED.
------------	---	---

NOTICE TO PERSONS RECEIVING THIS DRAWING

THE TECHNICAL MATERIEL CORPORATION claims proprietary right in the material disclosed herein. This drawing is issued in confidence for engineering information only and may not be reproduced or used to manufacture anything shown herein without permission from THE TECHNICAL MATERIEL CORPORATION to the user. This drawing is loaned for mutual assistance and is subject to recall at any time.

Property of:

THE TECHNICAL MATERIEL CORPORATION  
 MAMARONECK, NEW YORK

FFR-2	PROJECT NO.	A-286	DATE
MODEL	PROJECT NO.	ASSY. NO.	DATE
USED ON			

3	10	NTH0633BC2	NUT, HEX.
3	9	LWS06MRC	LOCKWASHER, SPLIT
3	8	SCBS0632BC5	SCREW, MACHINE
X	7	BS-100	SOLDER, SOFT
2	6	SCFS0632BC5	SCREW, MACHINE
7	5	NTH0832BC10	NUT, HEX
7	4	LWS08MRC	LOCKWASHER, SPLIT
5	3	SCBS0832BC5	SCREW, MACHINE
1	2	A-278	CHASSIS FRAME JUMPER WIRE ASSY.
1	1	A-275	CENTER CHASSIS & PAN ASSY.
REQ. ITEM	PART NO.	DESCRIPTION	SYMBOL
THE TECHNICAL MATERIEL CORP. MAMARONECK, NEW YORK			
CENTER CHASSIS AND CHASSIS FRAME ASSEMBLY			
STOCK SIZE		C.O.D. 12-25-54	
MATERIAL		DRAWN	
WEIGHT PER PC.		CHECKED	
TYPE & TEMPER		HEAT TREAT. SPEC.	
FINISH & SPEC. NO.		FINAL APPROVAL	
SUPERCEDES		A-285	
FFR		F	

A-285 F