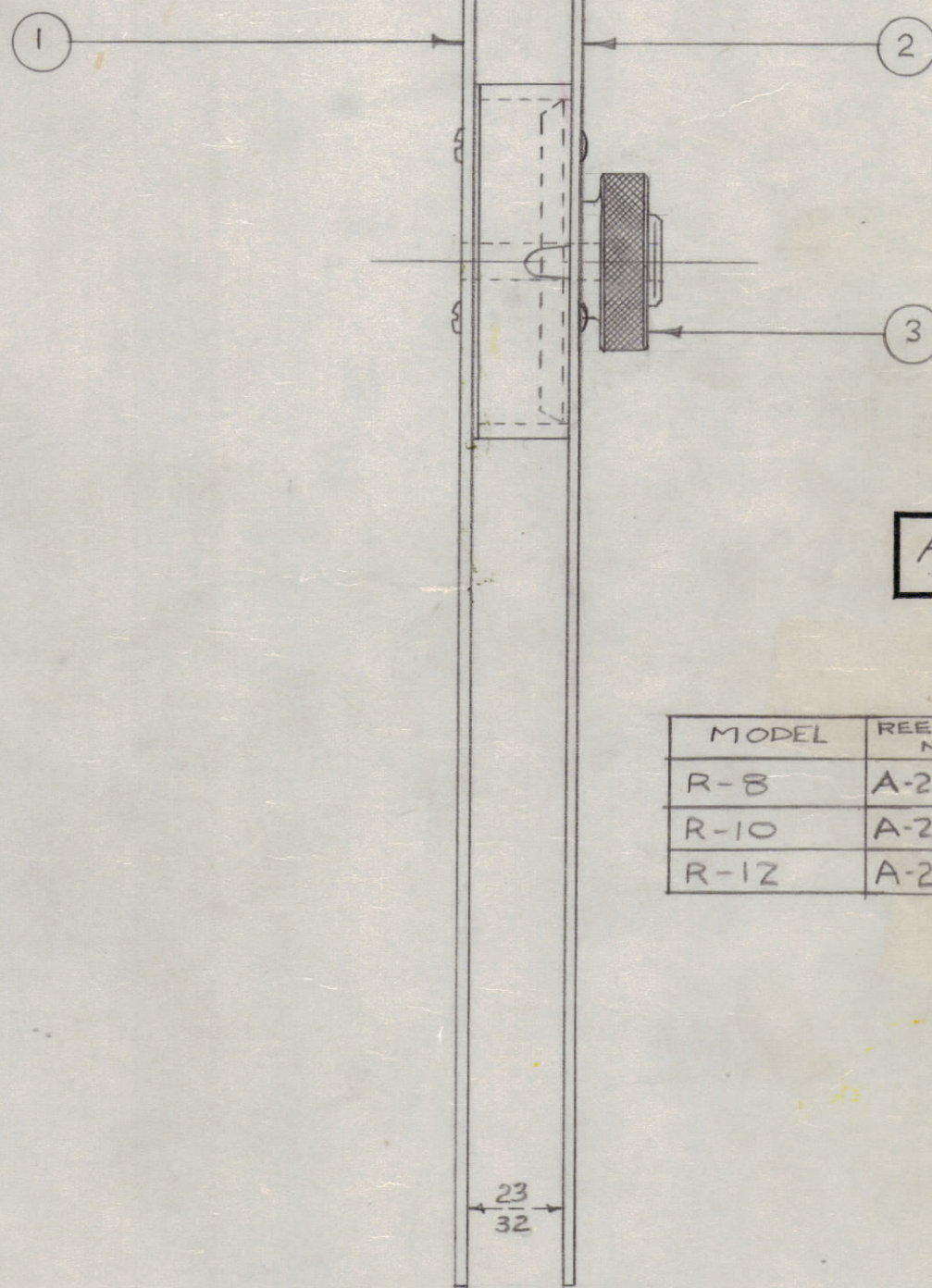
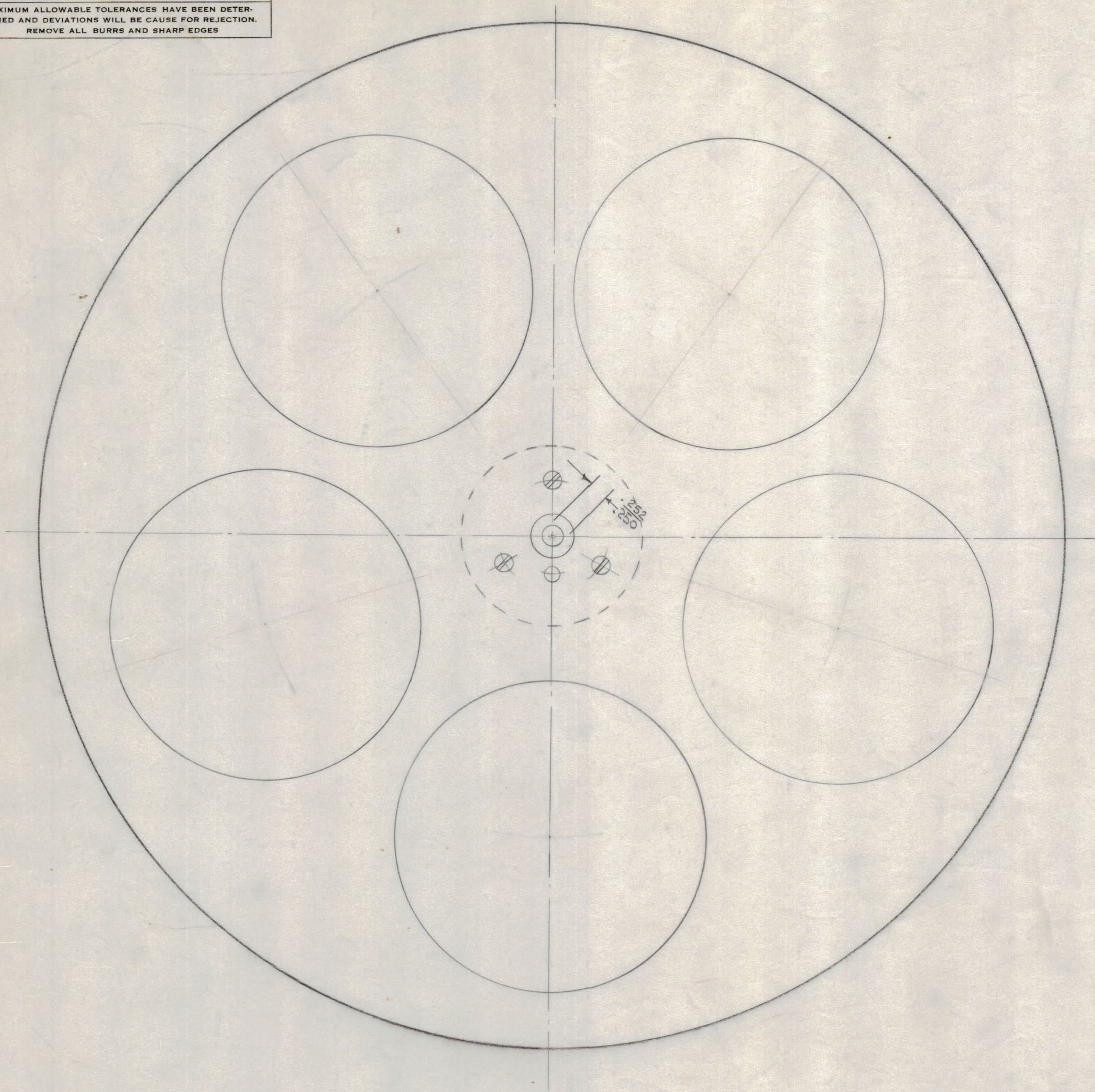


IF IT IS FOUND DESIRABLE TO CHANGE ANY TOLERANCE OR OTHER DETAIL SPECIFIED ON THIS DRAWING NOTIFY THE PURCHASER PROMPTLY.

MAXIMUM ALLOWABLE TOLERANCES HAVE BEEN DETERMINED AND DEVIATIONS WILL BE CAUSE FOR REJECTION. REMOVE ALL BURRS AND SHARP EDGES

RELEASED



NOTICE TO PERSONS RECEIVING THIS DRAWING
 THE TECHNICAL MATERIEL CORPORATION claims proprietary right in the material disclosed hereon. This drawing is issued in confidence for engineering information only and may not be reproduced or used to manufacture anything shown hereon without permission from THE TECHNICAL MATERIEL CORPORATION to the user. This drawing is loaned for mutual assistance and is subject to recall at any time.

Property of:
 THE TECHNICAL MATERIEL CORPORATION
 MAMARONECK, NEW YORK

A-290 B

MODEL	REEL ASSY. NO.	REEL SIZE
R-8	A-290-1	8"
R-10	A-290-2	10"
R-12	A-290-3	11 1/2"

ISSUE	ITEM	CHANGED FROM	DATE	CN. NO.	DRAFTS	CHECKER	ENG. APP.
B		23/32 WAS 9/16	6/24/52	14343	DVV		
A	2	.250 ADDED	6/3/54	1	C.B.D.		
	1	9/16 ADDED					

TOLERANCES SCALE: $\frac{1}{16}$

ALL OTHERS DEC. DIM. \pm FRAC. DIM. \pm ANGULAR DIM. \pm DRILL, PUNCH, COMMERCIAL STOCK SIZES AND MANUFACTURERS TOLERANCES ARE NOT INCLUDED.

MODEL	PROJECT NO.	ASSY. NO.	DATE
R-12	168	#	12-5-52
R-10	168	#	12-5-52
R-8	168	A #	12-5-52

USED ON

REQ. ITEM	PART NO.	DESCRIPTION	SYMBOL
1 3	NT-107	KNURLED NUT	
1 2	A-288	FREE WHEEL ASSY.	
1 1	A-289	DRIVE WHEEL ASS'Y.	
#		THE TECHNICAL MATERIEL CORP.	
#		MAMARONECK, NEW YORK	
#		REEL ASS'Y.	
#		8" OR 10" OR 11 1/2"	
#		16 12-5-52	
#		DRAWN	ELEC. DES. APP. MECH. DES. APP.
#		HEAT TREAT. SPEC.	FINAL APPROVAL
#		FINISH & SPEC. NO.	

A-290 B