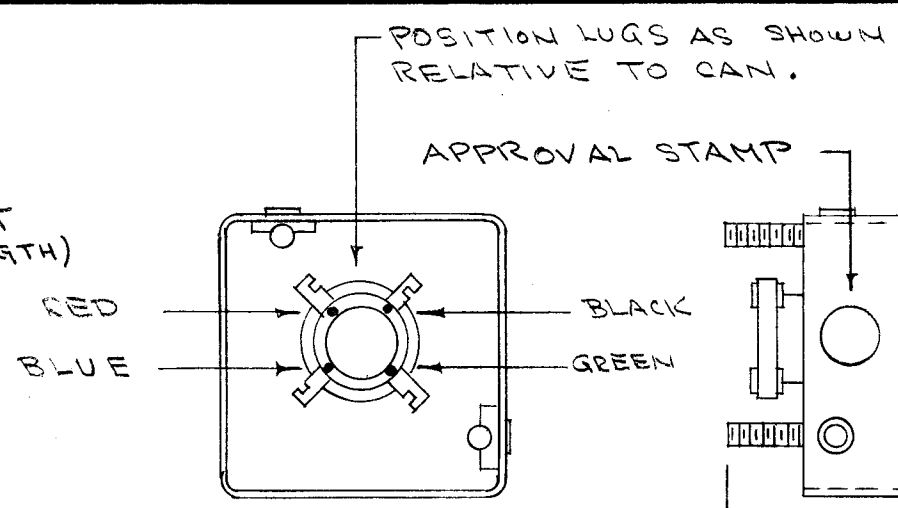
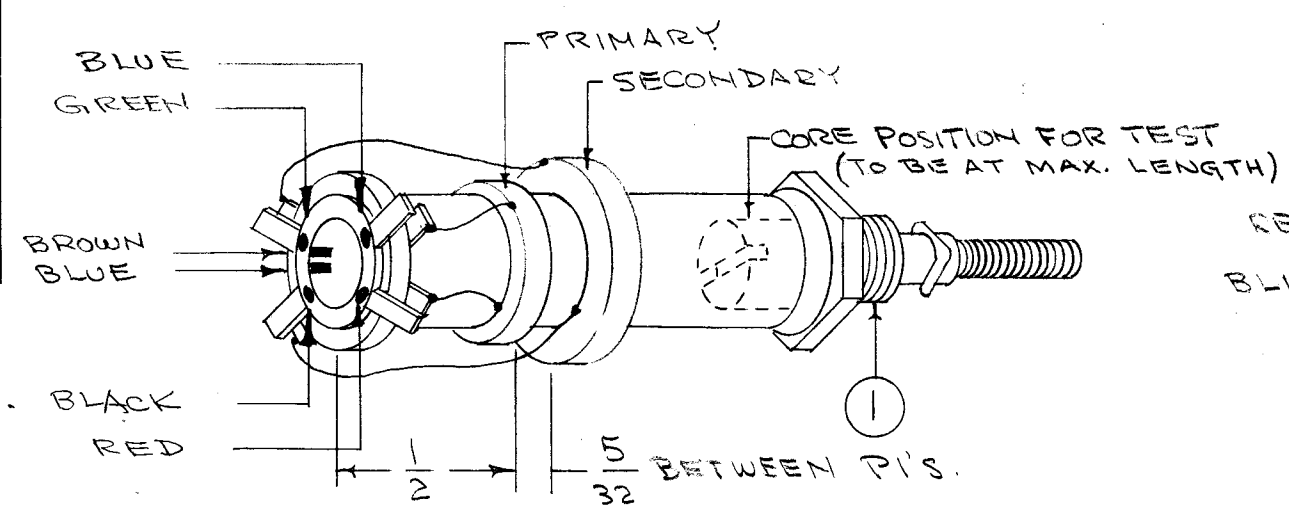
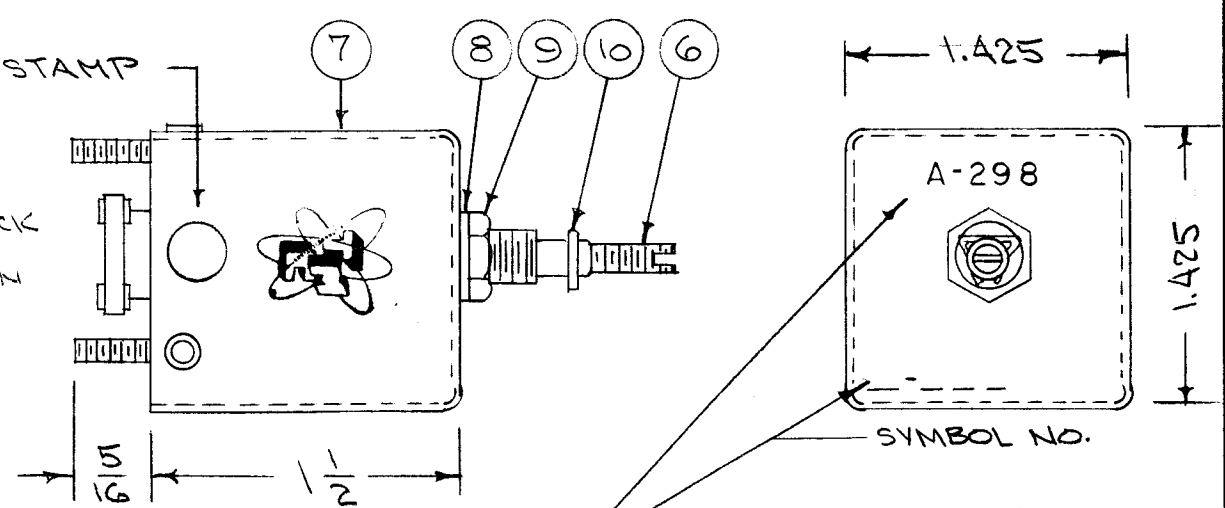


U
A-298

CEMENT TERMINAL RING TO COIL FORM WITH ITEM 3.
COLOR CODE END OF COIL FORM AS BELOW.



STAMP TMC INSIGNIA ON SIDE OF CAN.



STAMP ASS'Y. NO. & SYMBOL NO.
ON CAN AFTER CAN IS ASSEMBLED
ON CHASSIS.

WINDING MACHINE DATA

- DRIVER GEAR - 85
- CAM GEAR - 90
- CAM - .093

WINDING DATA

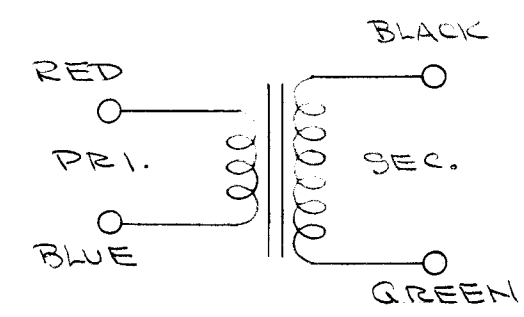
- 1- PRIMARY - STARTING AT RED LUG, UNIV. WIND $12\frac{1}{4}$ TURNS OF ITEM 2 ENDING ON BLUE LUG.
- 2- SECONDARY - STARTING AT BLACK LUG, UNIV. WIND $20\frac{3}{4}$ TURNS OF ITEM 2 ENDING ON GREEN LUG.
- 3- STAKE COIL ENDS WITH ITEM 3.
- 4- BAKE FOR $\frac{1}{2}$ HOUR AT 215° F.
- 5- SATURATE COILS WITH ITEM 4 (Q MAX).
- 6- BAKE FOR $\frac{1}{2}$ HOUR AT 215° F.
- 7- REPEAT STEPS 5 & 6.
- 8- STRIP, TIN & SOLDER ENDS TO LUGS.

TEST DATA (SEE ABOVE FOR CORE POSITION)

TEST LEADS APPROX. $\frac{1}{4}$ ". NO CAN NEEDED FOR TEST.

	PRIMARY	SECONDARY
	RED/BLUE	BLACK/GREEN
L_{uh}	3.2 (2.9 - 3.5)	10.5 (10 - 11)
Q	65 OR GREATER	50 OR GREATER
f	7.9 MC	7.9 MC

USE BOONTON Q METER 160A OR EQUIV.



FREQ. RANGE - 3.95 - 8.3 MC

X	11	BS-100	SOLDER, SOFT	
1	10	SP-102	SPRING LOCK P/O CF-114	
1	9	NT-102	NUT, HEX P/O CF-114	
1	8	LWI 25 LRC	WASHER, LOCK P/O CF-114	
1	7	A-173	CAN ASSEMBLY	
1	6	CI-109-19	CORE	
1	5	TE-146-4	COLLAR & LUGS	
X	4	GL-102	Q MAX A-27	
X	3	GL-103	CEMENT, DUOCO	
X	2	WI-107-15	WIRE, #34 DSC	
1	1	CF-114-3	COIL FORM	

ISSUE	ITEM	CHANGED FROM	DATE	CH. NO.	DRAFTS	CHECKER	ENG. APP.
C	1	Q WAS 75 (Red/Blue) & 58 for BK/Grn	2/1/58	3	6	P.L.K.	J.S.R.
B	1	$12\frac{1}{4}$ WAS $11\frac{3}{4}$ TURNS	3-15-57	2	8	P.L.K.	J.S.R.
A	1	COMPLETE REVISION SUPERSEDES A-294	8/30/56	1	1	P.L.K.	A.J.J.

REQ. PER UNIT	MODEL	PROJECT NO.	ASS'Y. NO.	DATE
1	FFRD-6	104	A-328	8-30-56

REQ. ITEM	PART NO.	DESCRIPTION	SYMBOL
THE TECHNICAL MATERIEL CORP. MAMARONECK, NEW YORK			
TRANSFORMER ASSY.			
ANTENNA T600 BAND 6			
MATERIAL		DRAWN	
TYPE & TEMPER		HEAT TREAT. SPEC.	
FINISH & SPEC. NO.		ELEC. DES. APP.	
		MECH. DES. APP.	

A-298 C